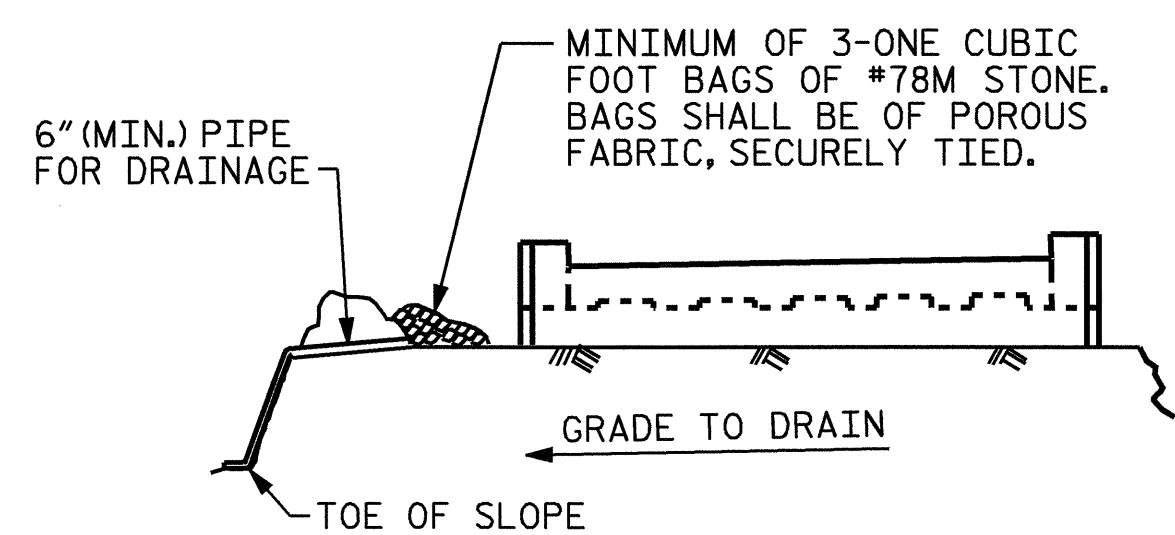


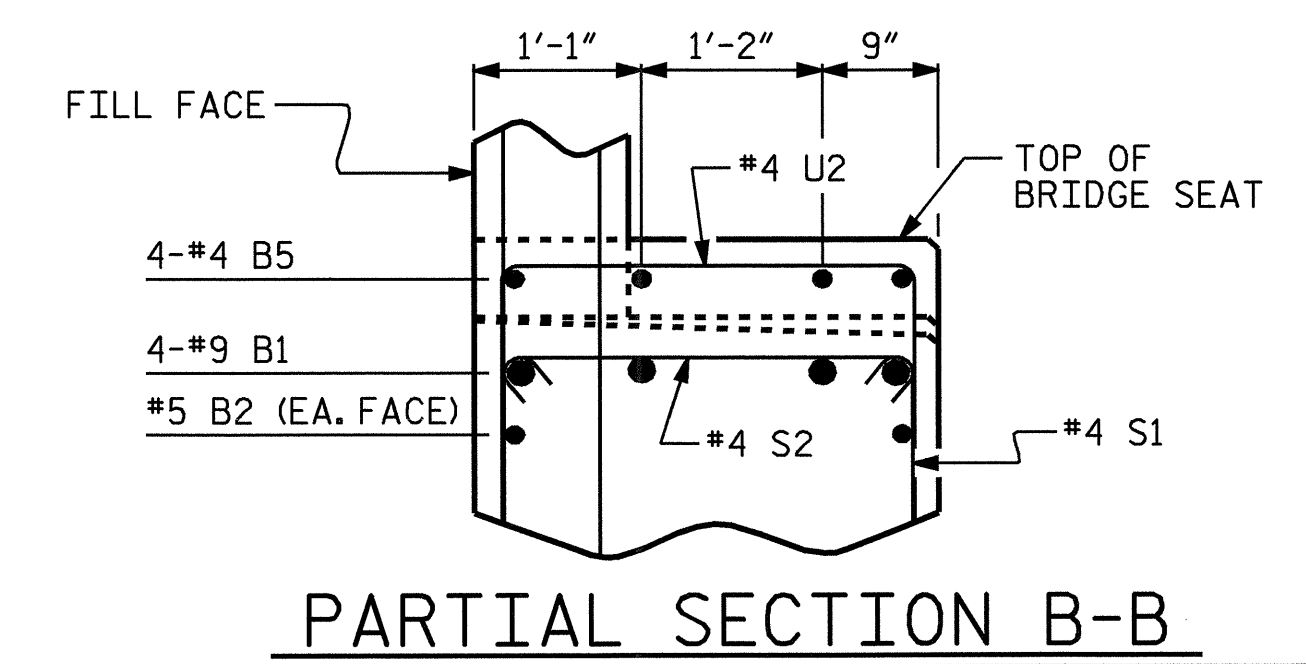
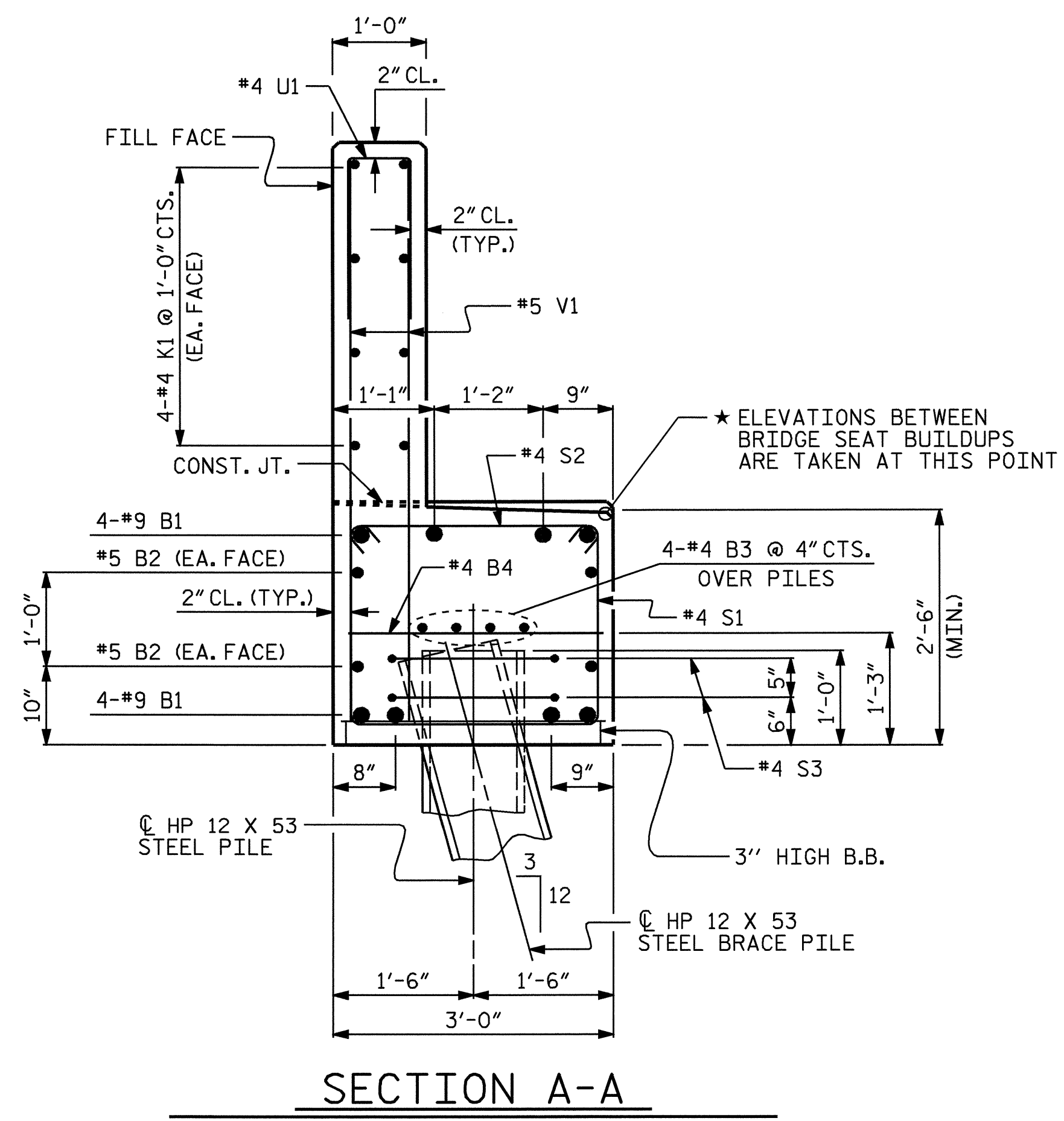
BILL OF MATERIAL					
END BENT 1					
BAR	No.	SIZE	TYPE	LENGTH	WEIGHT
B1	8	9	1	45'-3"	1231
B2	4	5	STR	42'-11"	179
B3	8	4	STR	22'-8"	121
B4	11	4	STR	2'-8"	20
B5	16	4	STR	3'-4"	36
H1	18	6	2	9'-11"	268
H2	18	6	2	10'-11"	295
K1	16	4	STR	22'-8"	242
K2	8	4	STR	2'-7"	14
S1	37	4	3	7'-8"	189
S2	37	4	4	3'-5"	84
S3	16	4	5	6'-6"	69
U1	38	4	6	4'-8"	118
U2	16	4	6	6'-8"	71
V1	76	5	STR	5'-9"	456
V2	26	5	STR	7'-1"	192
V3	28	5	STR	7'-9"	226
REINFORCING STEEL					3,811 LBS.
CLASS A CONCRETE BREAKDOWN :					
POUR #1 - (CAP & LOWER WINGS)					14.5 C.Y.
POUR #2 - (BACKWALL & UPPER WINGS)					9.3 C.Y.
TOTAL					23.8 C.Y.
HP 12 x 53 STEEL PILES					
NO. = 8					LIN. FEET = 200



BAGGED STONE AND PIPE SHALL BE PLACED IMMEDIATELY AFTER COMPLETION OF END BENT EXCAVATION. PIPE MAY BE EITHER CONCRETE, CORRUGATED STEEL, CORRUGATED ALUMINUM ALLOY, OR CORRUGATED PLASTIC. PERFORATED PIPE WILL NOT BE ALLOWED.

BAGGED STONE SHALL REMAIN IN PLACE UNTIL THE ENGINEER DIRECTS THAT IT BE REMOVED. THE CONTRACTOR SHALL REMOVE AND DISPOSE OF SILT ACCUMULATIONS AT BAGGED STONE WHEN SO DIRECTED BY THE ENGINEER. BAGS SHALL BE REMOVED AND REPLACED WHENEVER THE ENGINEER DETERMINES THAT THEY HAVE DETERIORATED AND LOST THEIR EFFECTIVENESS.

NO SEPARATE PAYMENT WILL BE MADE FOR THIS WORK AND THE ENTIRE COST OF THIS WORK SHALL BE INCLUDED IN THE UNIT CONTRACT PRICE BID FOR THE SEVERAL PAY ITEMS.



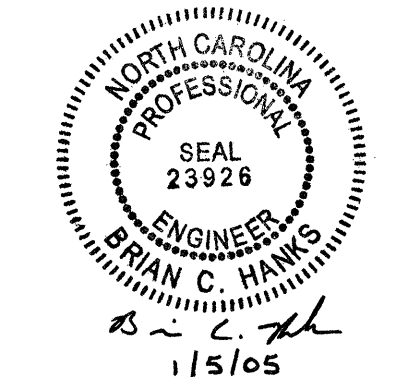
PROJECT NO. B-3714

WILKES COUNTY

STATION: 17+05.50 -L-

SHEET 3 OF 3

STATE OF NORTH CAROLINA					
DEPARTMENT OF TRANSPORTATION					
RALEIGH					
SUBSTRUCTURE					
END BENT 1					
REVISIONS					
NO.	BY:	DATE:	NO.	BY:	DATE:
1			3		
2			4		
SHEET NO.					S-21
TOTAL SHEETS					35



DRAWN BY : P.C. BREWER DATE : 7/14/04

CHECKED BY : J.L. WALTON DATE : 9/15/04