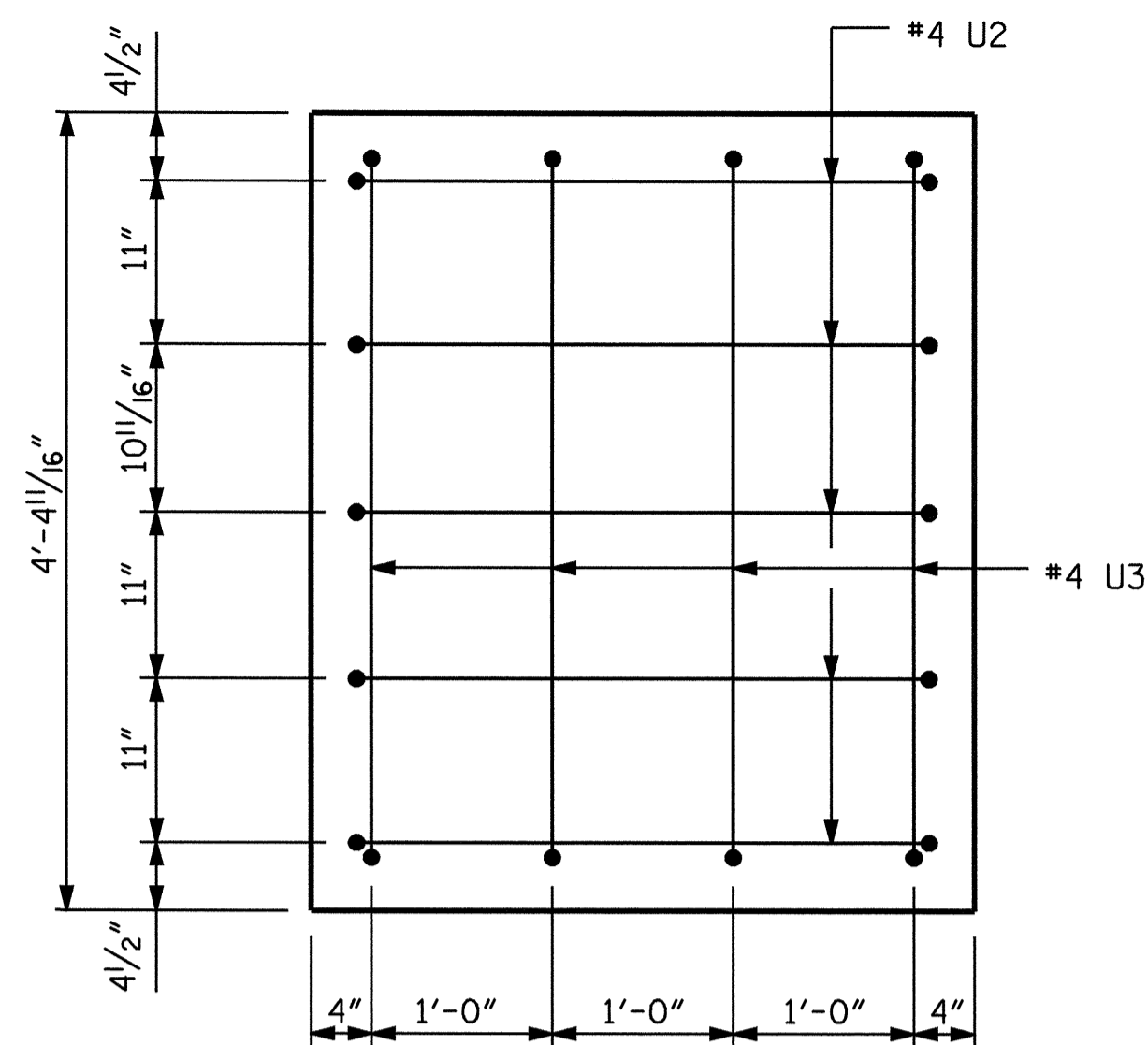
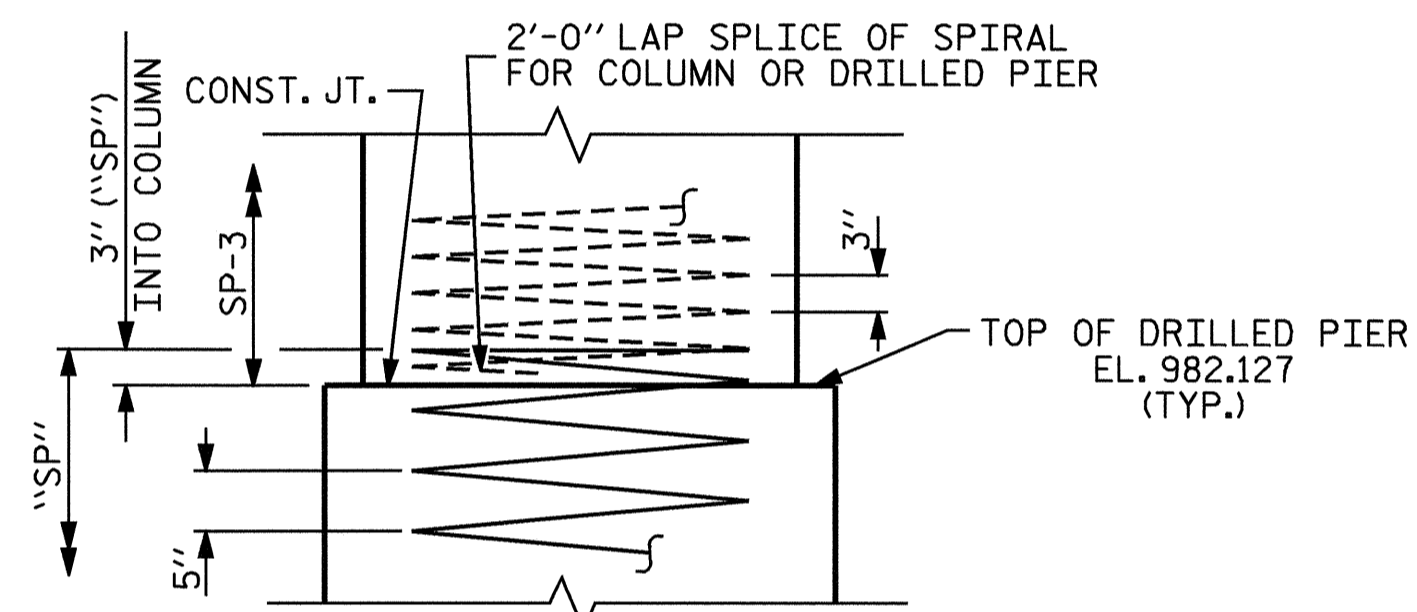


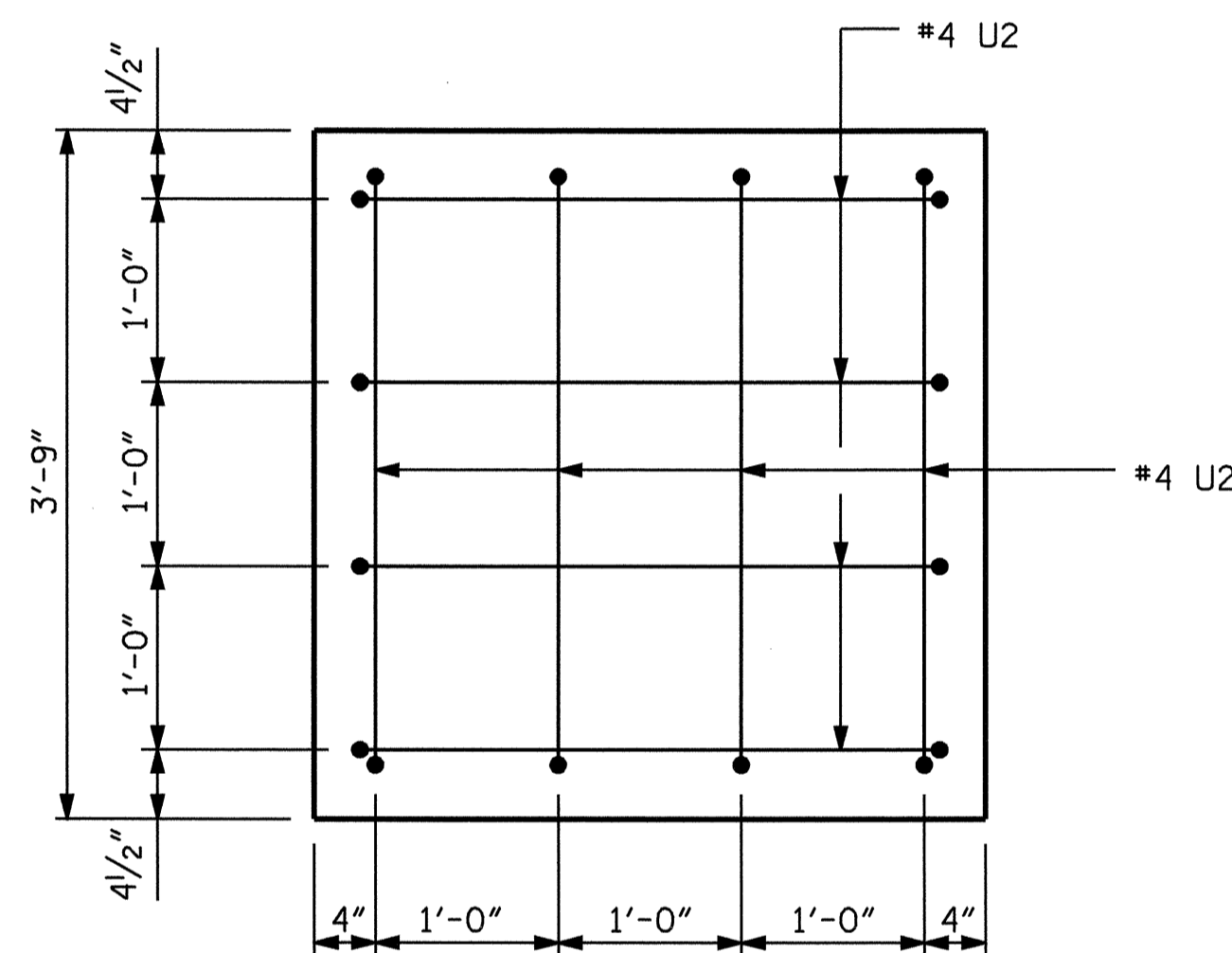
SECTION THRU CAP



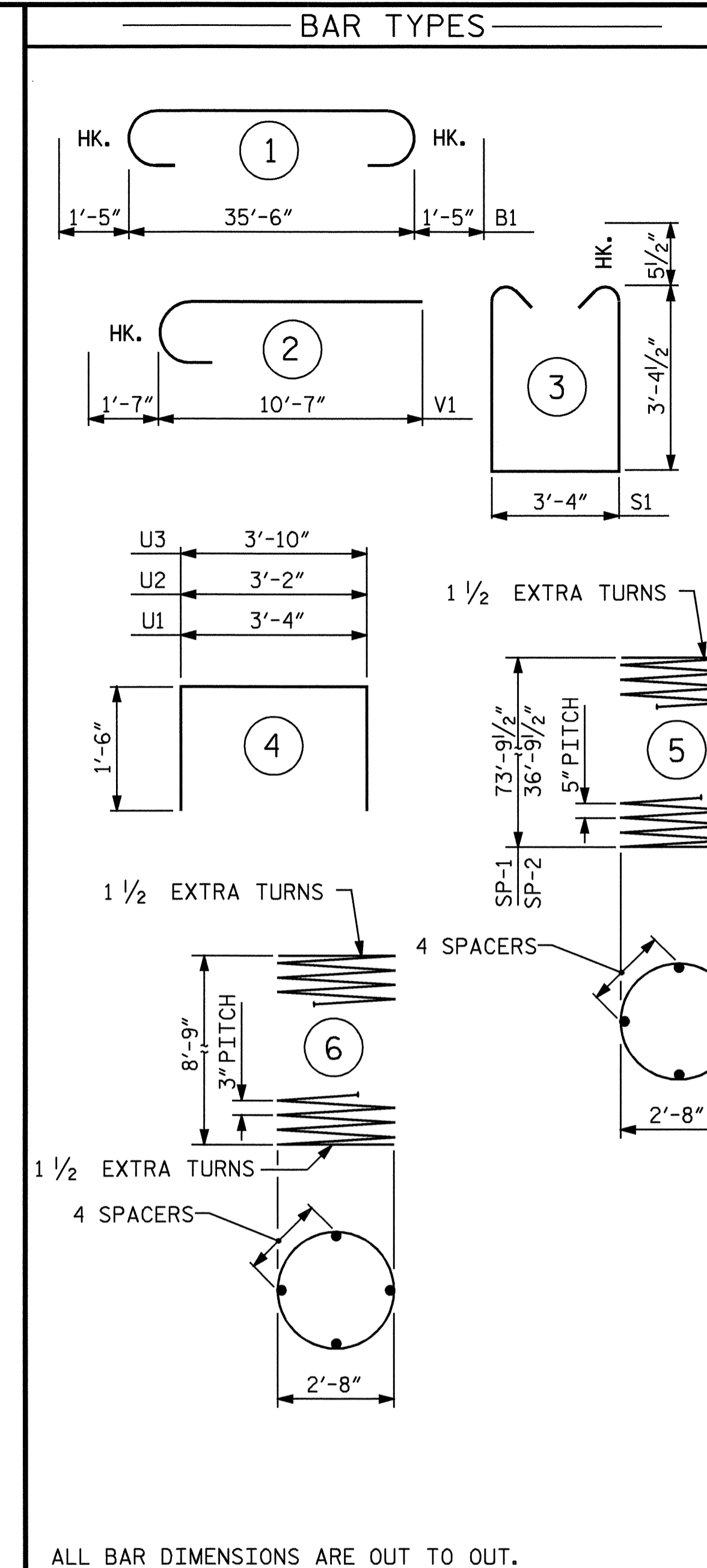
RIGHT END VIEW



CONSTRUCTION JOINT DETAIL



LEFT END VIEW



ALL BAR DIMENSIONS ARE OUT TO OUT.

BILL OF MATERIAL

BENT 1

BAR	NO	SIZE	TYPE	LENGTH	WEIGHT
B1	6	#10	1	38'-4"	990
B2	6	#10	STR	35'-8"	921
B3	6	#5	STR	35'-8"	223
B4	6	#4	STR	10'-10"	43
B5	6	#4	STR	11'-4"	45
M1	24	#11	STR	42'-8"	5441
M2	12	#11	STR	46'-10"	2986
S1	39	#5	3	11'-0"	447
U1	41	#4	4	6'-4"	173
U2	13	#4	4	6'-2"	54
U3	4	#4	4	6'-10"	18
V1	24	#11	2	12'-2"	1551
REINFORCING STEEL				LBS.	12892
SP-1	1	*	5	1469'-3"	1532
SP-2	1	*	5	738'-9"	771
SP-3	2	**	6	312'-11"	418
SPIRAL COLUMN REINFORCING STEEL				LBS.	2721
CLASS A BREAKDOWN					
POUR #2 (COLUMN)				CU.YD.	4.5
POUR #3 (CAP)				CU.YD.	19.7
TOTAL				CU.YD.	24.2
DRILLED PIER QUANTITIES					
POUR #1 (DRILLED PIERS)				CU.YD.	39.7
3'-6" Ø DRILLED PIER IN SOIL				LIN. FT.	87.3
3'-6" Ø DRILLED PIER NOT IN SOIL				LIN. FT.	24.0
PERMANENT STEEL CASING FOR 3'-6" Ø DRILLED PIER				LIN. FT.	20.3
CROSSHOLE SONIC LOGGING				EA.	1
CSL TUBES				LIN. FT.	465.0
SID INSPECTION				EA.	2
SPT TESTING				EA.	2

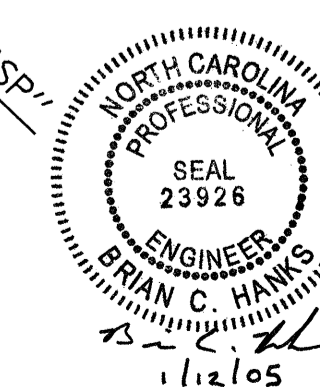
\* THE SP-1 AND SP-2 SPIRAL REINFORCING STEEL SHALL BE W31 OR D-31 COLD DRAWN WIRE OR #5 PLAIN OR DEFORMED BAR,  
 \*\* THE SP-3 SPIRAL REINFORCING STEEL SHALL BE W20 OR D-20 COLD DRAWN WIRE OR #4 PLAIN OR DEFORMED BAR.

PROJECT NO. B-3714  
WILKES COUNTY  
 STATION: 17+05.50 -L-

SHEET 2 OF 2

STATE OF NORTH CAROLINA  
 DEPARTMENT OF TRANSPORTATION  
 RALEIGH

SUBSTRUCTURE  
 BENT 1



REVISIONS					SHEET NO.
NO.	BY:	DATE:	NO.	BY:	DATE:
1			3		
2			4		

S-23  
 TOTAL SHEETS  
 35

DRAWN BY : J.L. WALTON DATE : 9/29/04  
 CHECKED BY : D.G. ELY DATE : 11/1/04

12-JAN-2005 09:53  
 W:\squadg\TURNED\11\8\3714\FINAL.dwg\B-3714\_sd.B\*.01.dgn  
 bhrank

PLAN OF DRILLED PIERS

