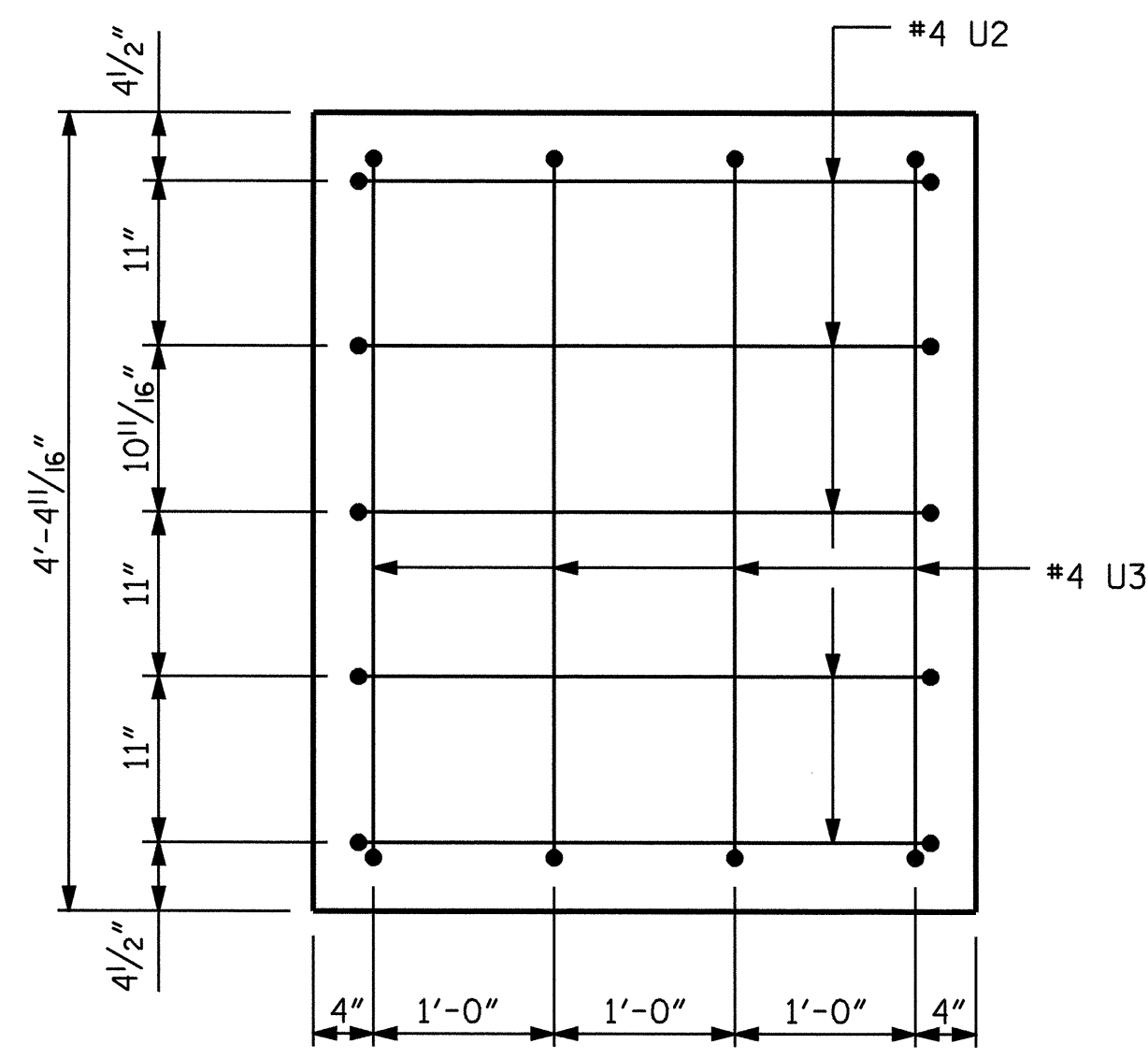
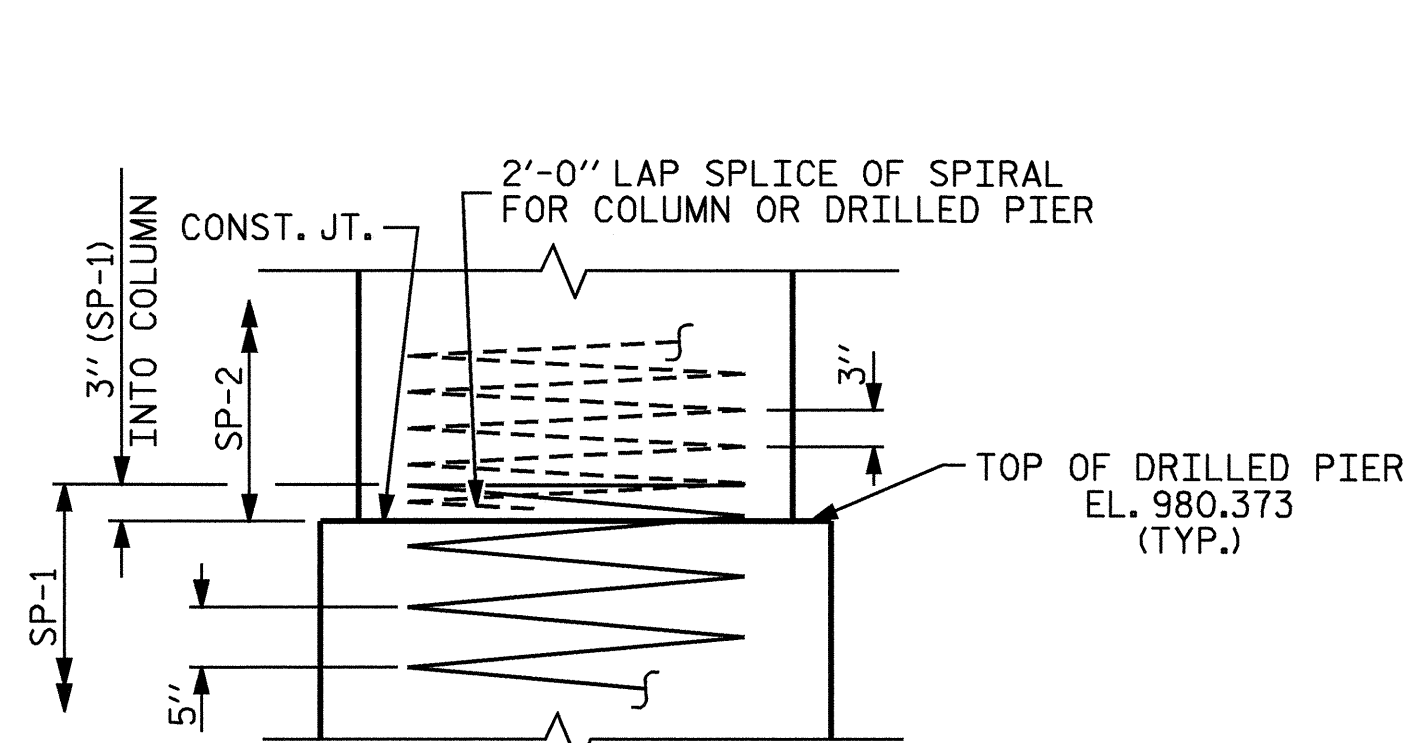


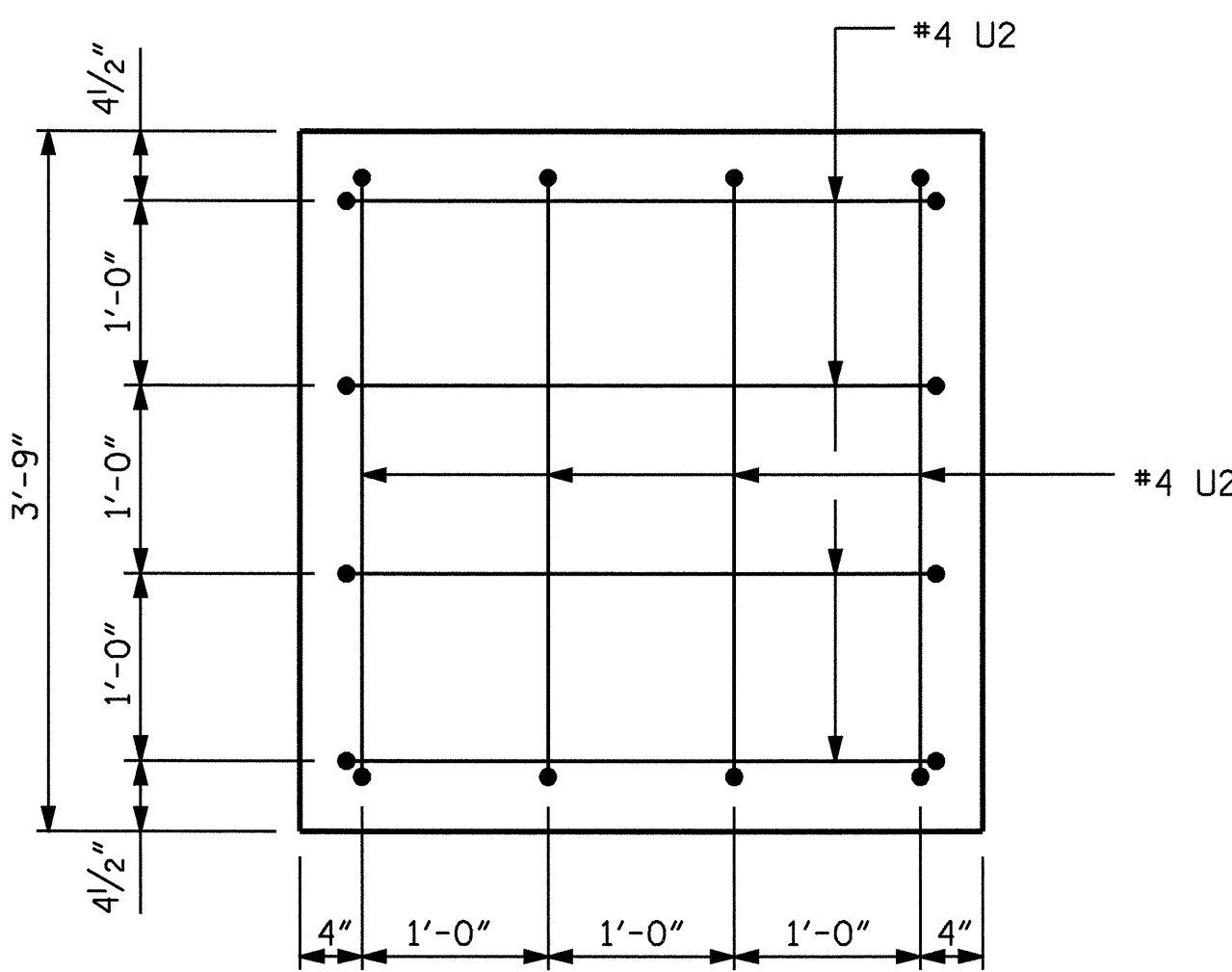
SECTION THRU CAP



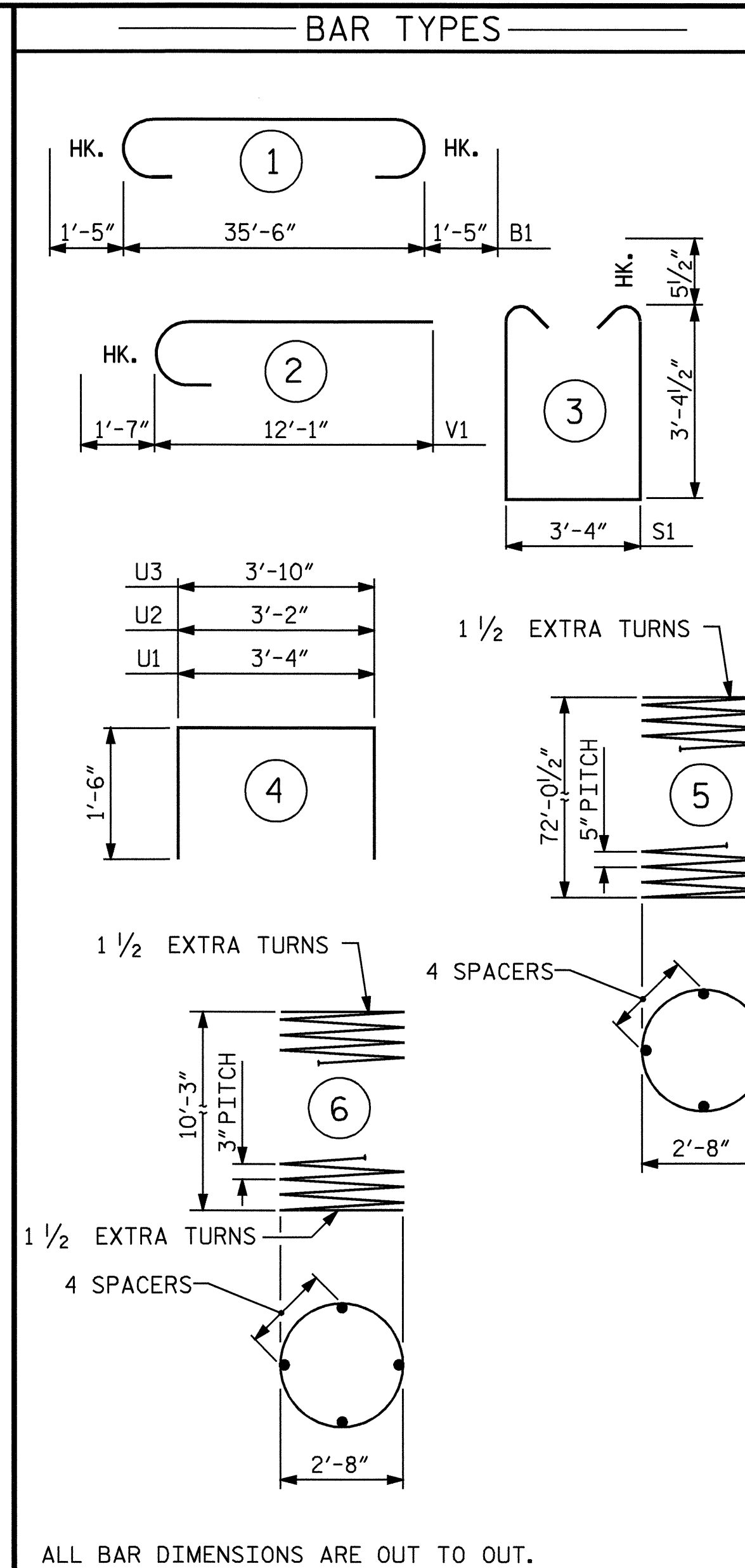
RIGHT END VIEW



CONSTRUCTION JOINT DETAIL



LEFT END VIEW

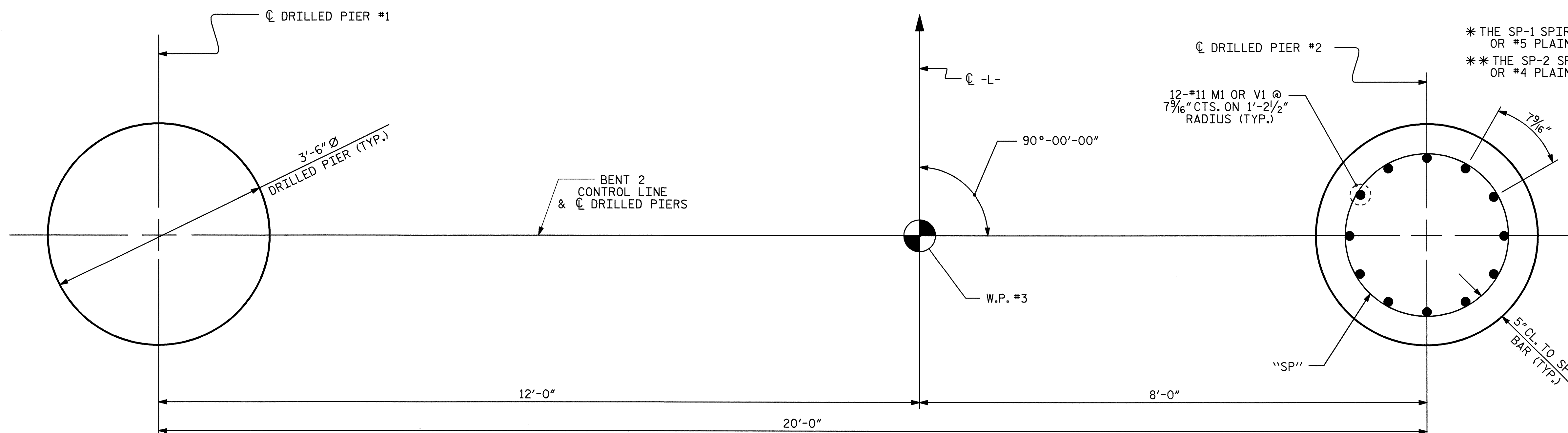


ALL BAR DIMENSIONS ARE OUT TO OUT.

BILL OF MATERIAL

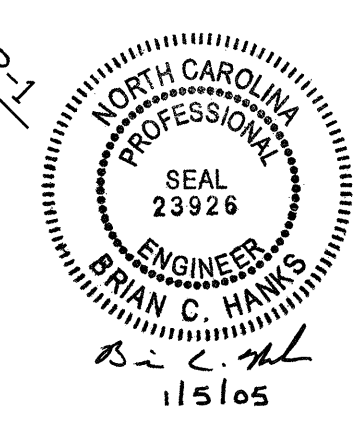
BENT 2

BAR	NO	SIZE	TYPE	LENGTH	WEIGHT
B1	6	#10	1	38'-4"	990
B2	6	#10	STR	35'-8"	921
B3	6	#5	STR	35'-8"	223
B4	6	#4	STR	10'-10"	43
B5	6	#4	STR	11'-4"	45
M1	48	#11	STR	41'-9"	10647
S1	39	#5	3	11'-0"	447
U1	41	#4	4	6'-4"	173
U2	13	#4	4	6'-2"	54
U3	4	#4	4	6'-10"	18
V1	24	#11	2	13'-8"	1743
REINFORCING STEEL					LBS. 15304
SP-1	2	*	5	1436'-5"	2996
SP-2	2	**	6	362'-4"	484
SPIRAL COLUMN REINFORCING STEEL					LBS. 3480
CLASS A BREAKDOWN					
POUR #2 (COLUMN)				CU.YD.	5.2
POUR #3 (CAP)				CU.YD.	19.7
TOTAL				CU.YD.	24.9
DRILLED PIER QUANTITIES					
POUR #1 (DRILLED PIERS)				CU.YD.	51.6
3'-6" Ø DRILLED PIER IN SOIL				LIN. FT.	108.7
3'-6" Ø DRILLED PIER NOT IN SOIL				LIN. FT.	36.0
PERMANENT STEEL CASING FOR 3'-6" Ø DRILLED PIER				LIN. FT.	16.7
CROSSHOLE SONIC LOGGING				EA.	1
CSL TUBES				LIN. FT.	599.0
SID INSPECTION				EA.	2
SPT TESTING				EA.	2



PLAN OF DRILLED PIERS

* THE SP-1 SPIRAL REINFORCING STEEL SHALL BE W31 OR D-31 COLD DRAWN WIRE OR #5 PLAIN OR DEFORMED BAR.
 ** THE SP-2 SPIRAL REINFORCING STEEL SHALL BE W20 OR D-20 COLD DRAWN WIRE OR #4 PLAIN OR DEFORMED BAR.



PROJECT NO. B-3714
WILKES COUNTY
 STATION: 17+05.50 -L-

SHEET 2 OF 2

STATE OF NORTH CAROLINA DEPARTMENT OF TRANSPORTATION RALEIGH				
SUBSTRUCTURE BENT 2				
REVISIONS				
NO.	BY:	DATE:	NO.	BY:
1			3	
2			4	

DRAWN BY : J.L. WALTON DATE : 9/29/04
 CHECKED BY : D.G. ELY DATE : 11/1/04

SHEET NO.
 S-25
 TOTAL SHEETS
 35