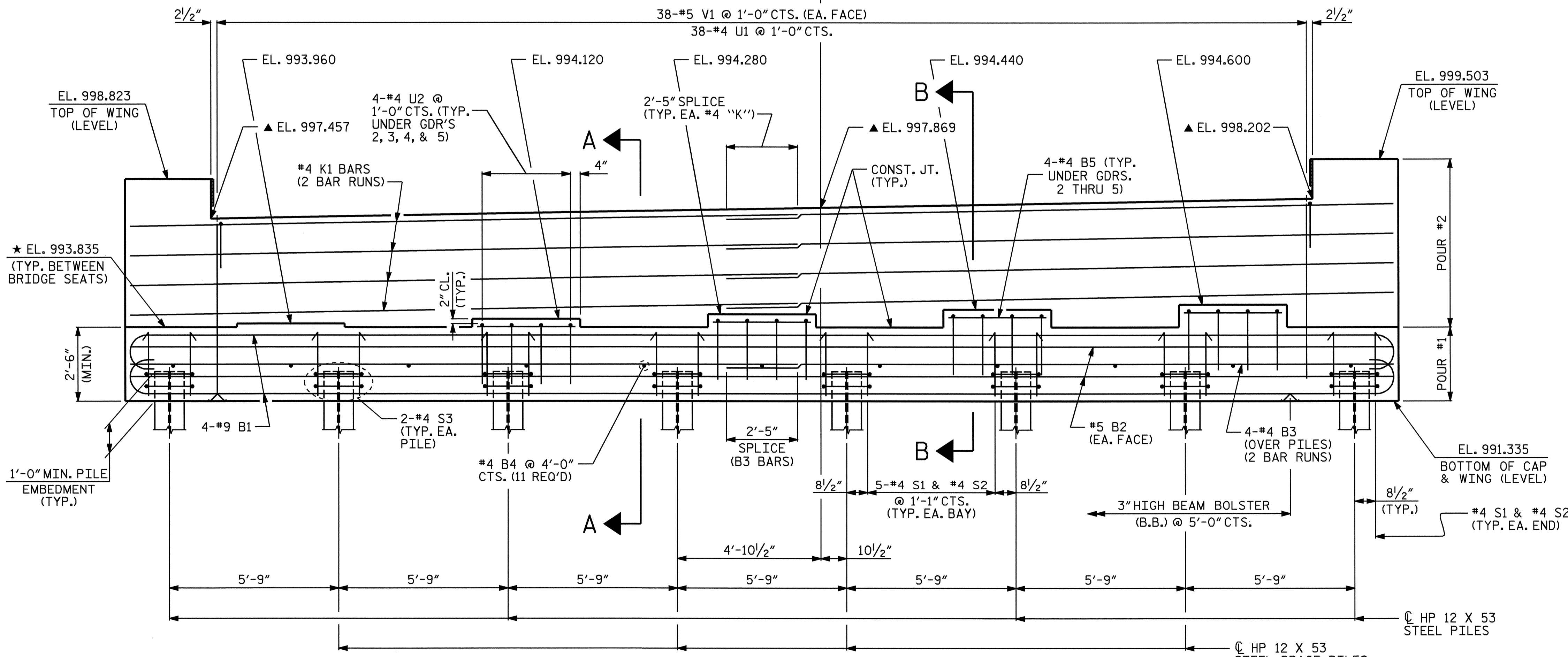
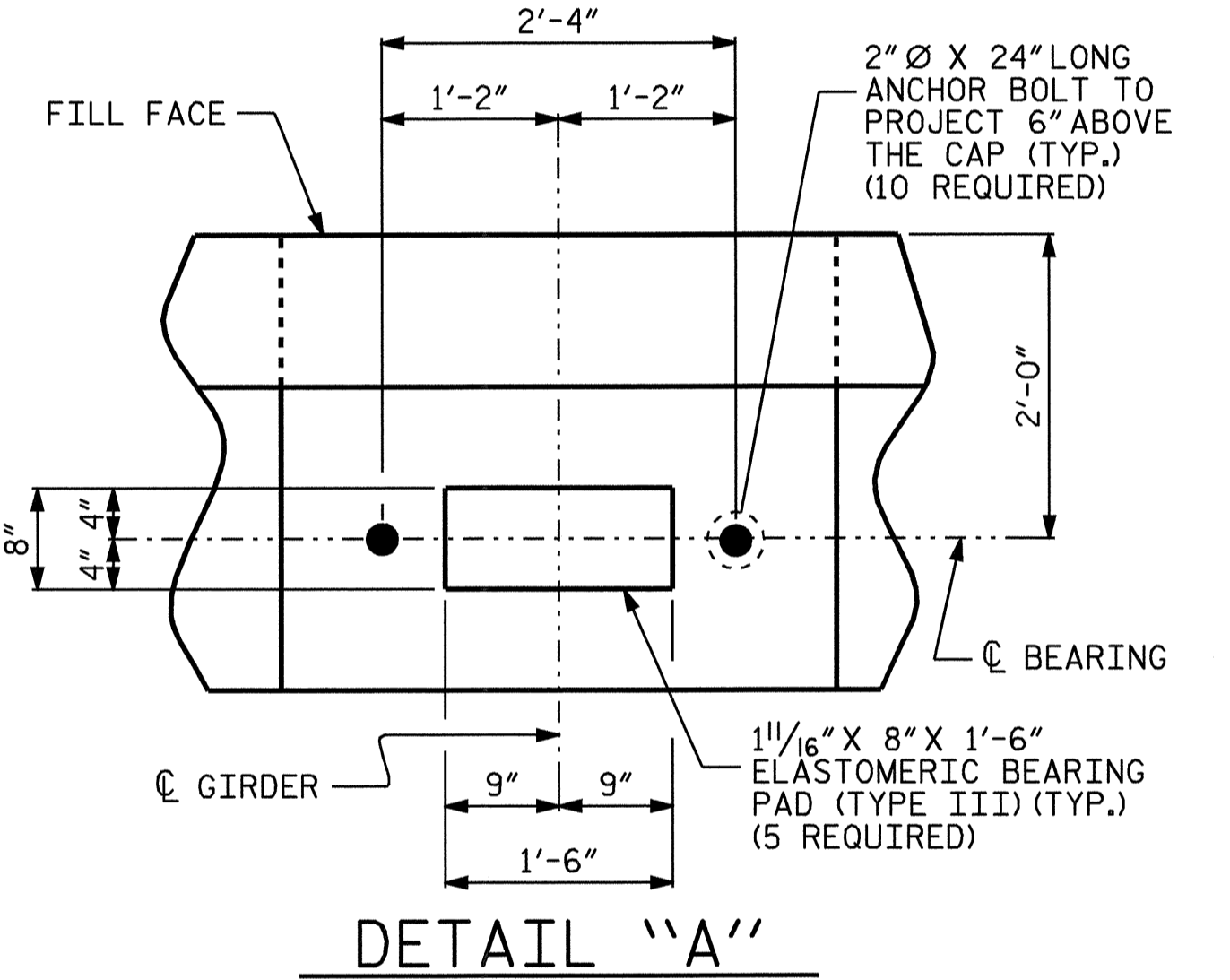


PLAN



ELEVATION



DETAIL "A"

- NOTES:**
- ★ FOR LOCATION OF ELEVATIONS BETWEEN BUILDUPS, SEE SECTION A-A ON SHEET 3 OF 3.
  - STIRRUPS AND U2 BARS IN CAP MAY BE SHIFTED AS NECESSARY TO CLEAR ANCHOR BOLTS.
  - FOR EPOXY PROTECTIVE COATING, SEE SPECIAL PROVISIONS.
  - BACKWALL SHALL BE PLACED BEFORE APPLYING THE EPOXY PROTECTIVE COATING.
  - ★ THE TOP SURFACE OF THE END BENT CAP EXCEPT THE BRIDGE SEAT BUILDUPS SHALL BE SLOPED TRANSVERSELY FROM THE FILL FACE TO THE BACK FACE AT THE RATE OF 2%.
  - ▲ THIS ELEVATION TAKEN AT FILL FACE OF BACKWALL.
  - THE CONTRACTOR SHALL PROVIDE FOR THE INSTALLATION OF THE 4" DIAMETER DRAIN PIPE THROUGH THE WING WALL AS REQUIRED FOR REINFORCED BRIDGE APPROACH FILLS. SEE THE ROADWAY PLANS. REINFORCING STEEL IN THE WING WALL MAY BE SHIFTED AS NECESSARY TO CLEAR THE DRAIN PIPE.
  - FOR PILE SPLICE DETAILS, SEE SHEET 3 OF 3.
  - THE TOP SURFACE AREAS OF THE END BENT CAPS SHALL BE CURED IN ACCORDANCE WITH THE STANDARD SPECIFICATIONS EXCEPT THE MEMBRANE CURING COMPOUND METHOD SHALL NOT BE USED.
  - FOR TEMPORARY DRAINAGE DETAILS, SEE SHEET 3 OF 3.

DRAWN BY : P.C. BREWER DATE : 7/13/04  
 CHECKED BY : J.L. WALTON DATE : 9/15/04

22-DEC-2004 12:36  
 W:\sq\ddg\TURNED\_IN\8\B3714\FINAL\_PLANS\B3714.ed.EB2.01.dgn  
 wparker

PROJECT NO. B-3714  
 WILKES COUNTY  
 STATION: 17+05.50 -L-

SHEET 1 OF 3

STATE OF NORTH CAROLINA  
 DEPARTMENT OF TRANSPORTATION  
 RALEIGH

**SUBSTRUCTURE  
 END BENT 2**

REVISIONS						SHEET NO.
NO.	BY:	DATE:	NO.	BY:	DATE:	S-26
1			3			TOTAL SHEETS
2			4			35

