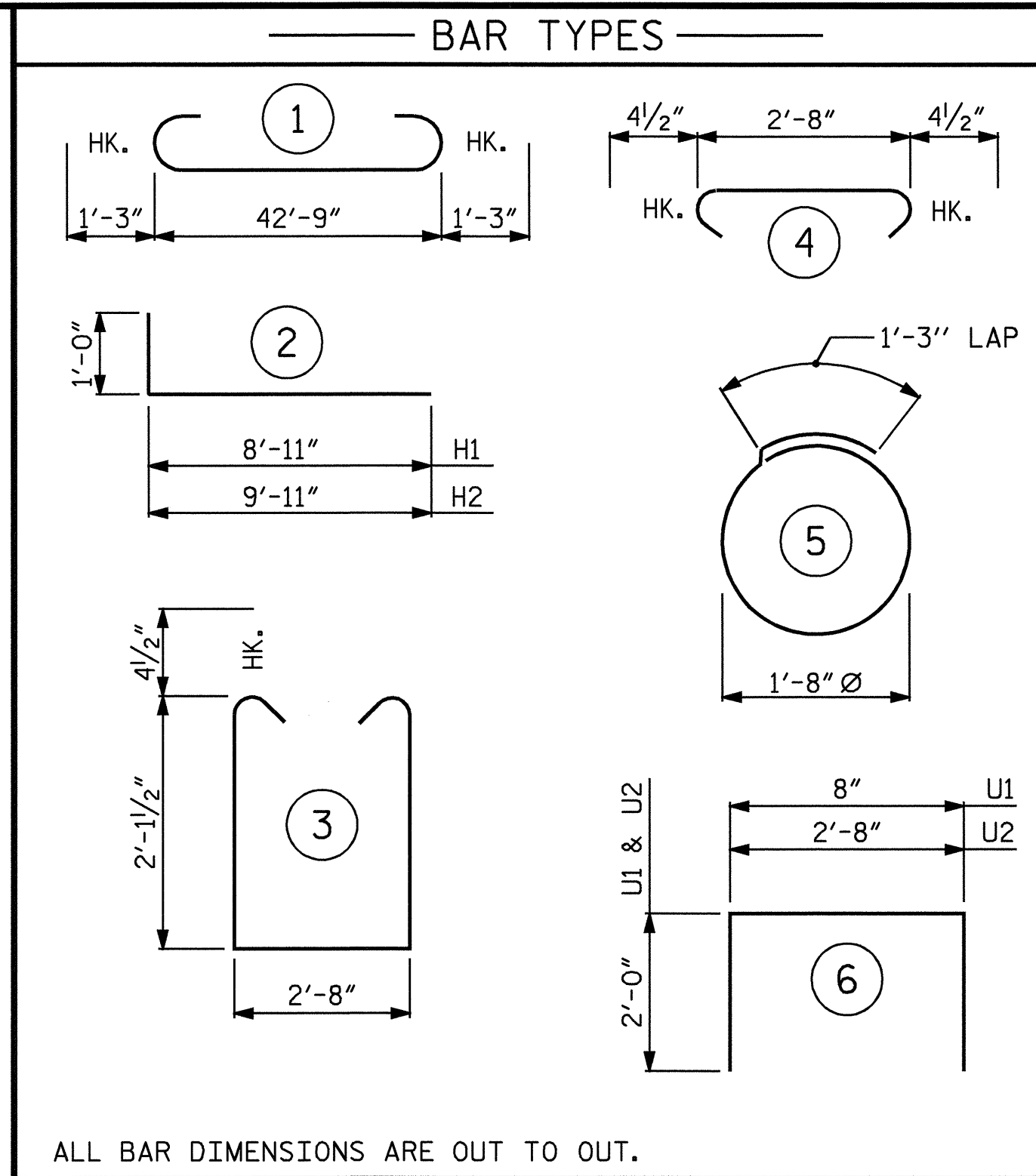
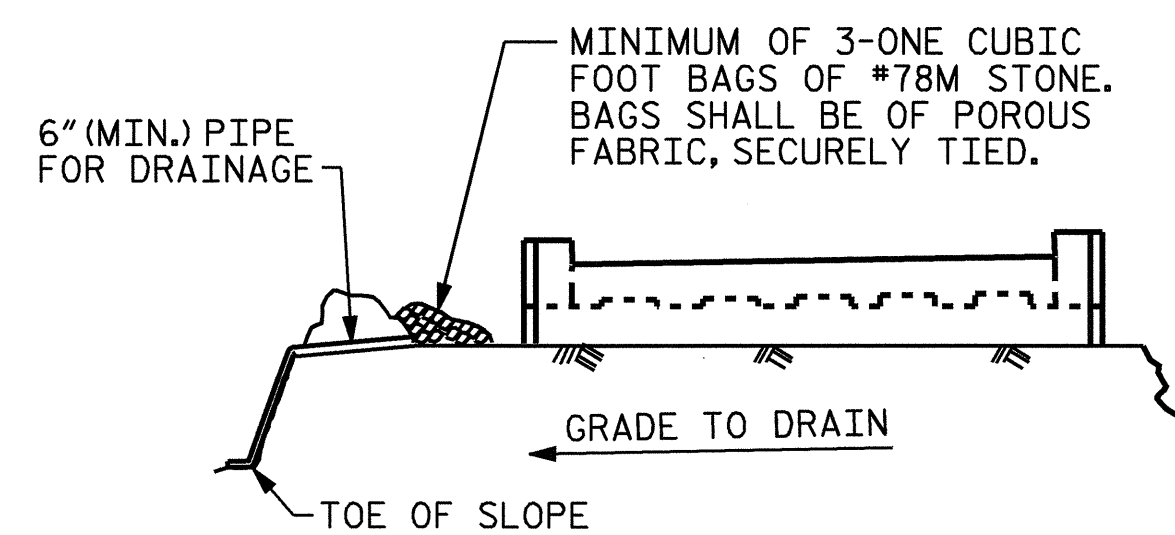


**PILE SPLICE DETAILS**



BILL OF MATERIAL						
END BENT 2						
BAR	No.	SIZE	TYPE	LENGTH	WEIGHT	
B1	8	9	1	45'-3"	1231	
B2	4	5	STR	42'-11"	179	
B3	8	4	STR	22'-8"	121	
B4	11	4	STR	2'-8"	20	
B5	16	4	STR	3'-4"	36	
H1	18	6	2	9'-11"	268	
H2	18	6	2	10'-11"	295	
K1	16	4	STR	22'-8"	242	
K2	8	4	STR	2'-7"	14	
S1	37	4	3	7'-8"	189	
S2	37	4	4	3'-5"	84	
S3	16	4	5	6'-6"	69	
U1	38	4	6	4'-8"	118	
U2	16	4	6	6'-8"	71	
V1	76	5	STR	5'-9"	456	
V2	26	5	STR	7'-1"	192	
V3	28	5	STR	7'-9"	226	
REINFORCING STEEL					3,811 LBS.	
CLASS A CONCRETE BREAKDOWN :						
POUR #1 - (CAP & LOWER WINGS)					14.5 C.Y.	
POUR #2 - (BACKWALL & UPPER WINGS)					9.3 C.Y.	
TOTAL					23.8 C.Y.	
HP 12 x 53 STEEL PILES						
NO. = 8					LIN. FEET = 280	

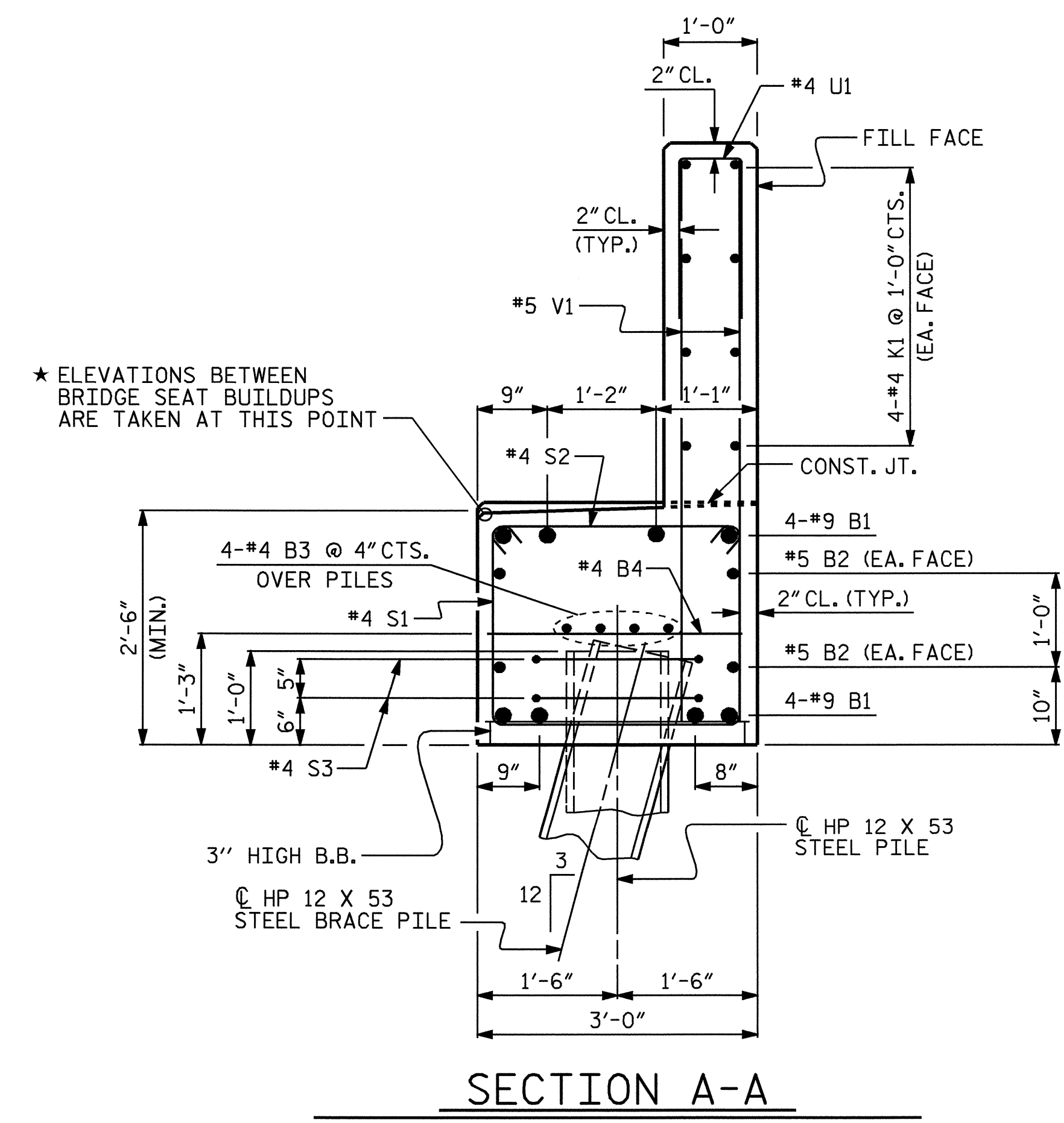


BAGGED STONE AND PIPE SHALL BE PLACED IMMEDIATELY AFTER COMPLETION OF END BENT EXCAVATION. PIPE MAY BE EITHER CONCRETE, CORRUGATED STEEL, CORRUGATED ALUMINUM ALLOY, OR CORRUGATED PLASTIC. PERFORATED PIPE WILL NOT BE ALLOWED.

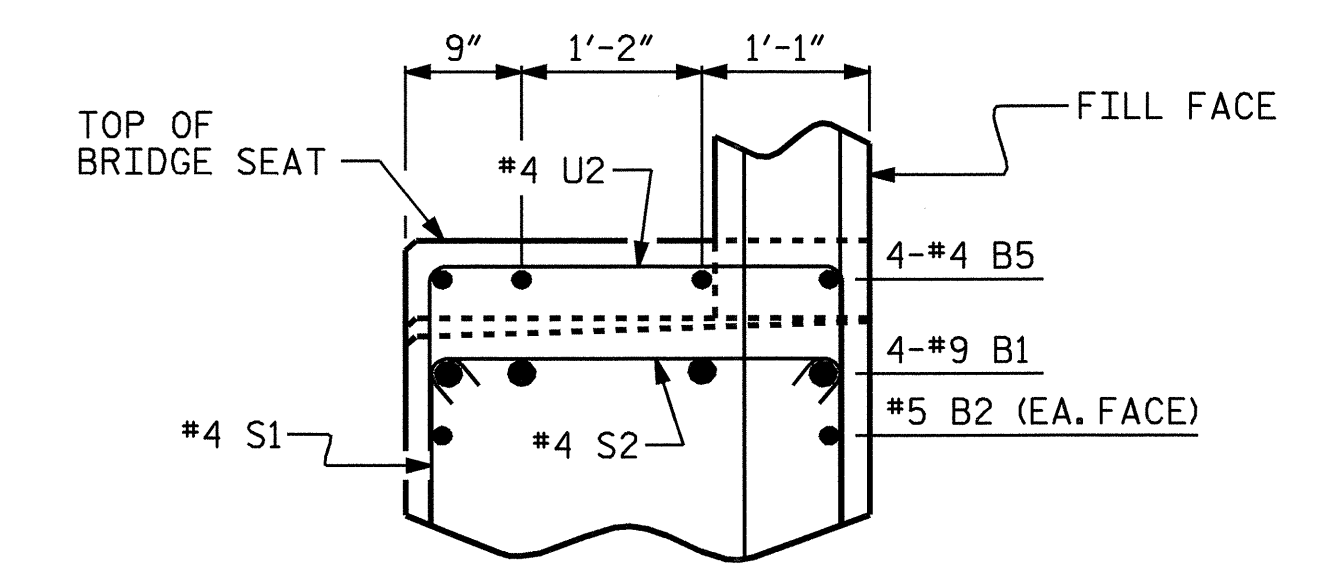
BAGGED STONE SHALL REMAIN IN PLACE UNTIL THE ENGINEER DIRECTS THAT IT BE REMOVED. THE CONTRACTOR SHALL REMOVE AND DISPOSE OF SILT ACCUMULATIONS AT BAGGED STONE WHEN SO DIRECTED BY THE ENGINEER. BAGS SHALL BE REMOVED AND REPLACED WHENEVER THE ENGINEER DETERMINES THAT THEY HAVE DETERIORATED AND LOST THEIR EFFECTIVENESS.

NO SEPARATE PAYMENT WILL BE MADE FOR THIS WORK AND THE ENTIRE COST OF THIS WORK SHALL BE INCLUDED IN THE UNIT CONTRACT PRICE BID FOR THE SEVERAL PAY ITEMS.

**TEMPORARY DRAINAGE AT END BENT**



**SECTION A-A**



**PARTIAL SECTION B-B**

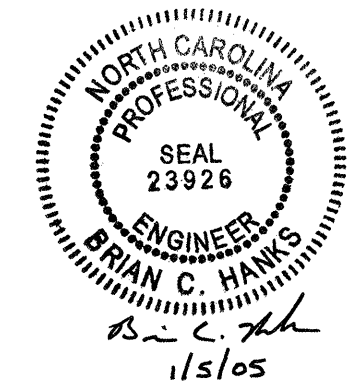
PROJECT NO. B-3714

WILKES COUNTY

STATION: 17+05.50 -L-

SHEET 3 OF 3

STATE OF NORTH CAROLINA DEPARTMENT OF TRANSPORTATION RALEIGH					
SUBSTRUCTURE END BENT 2					
REVISIONS					SHEET NO.
NO.	BY:	DATE:	NO.	BY:	DATE:
1			3		
2			4		
					TOTAL SHEETS
					35



DRAWN BY : P.C. BREWER DATE : 7/14/04

CHECKED BY : J.L. WALTON DATE : 9/15/04