

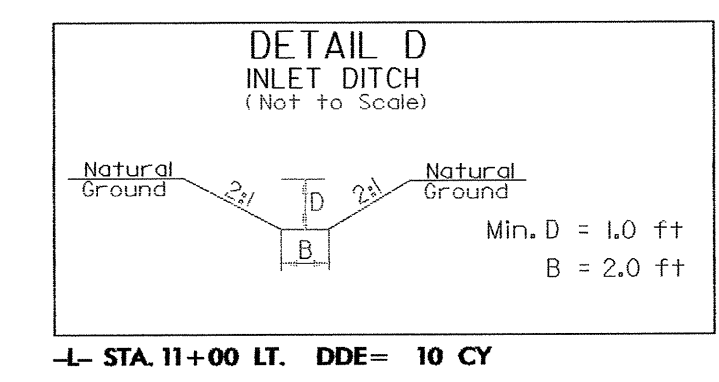
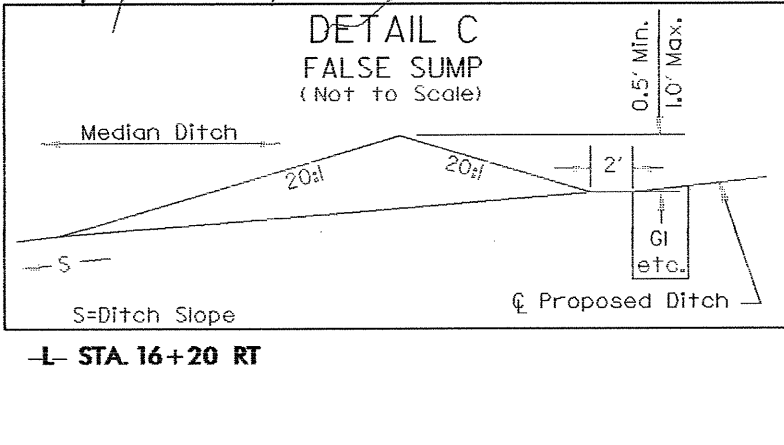
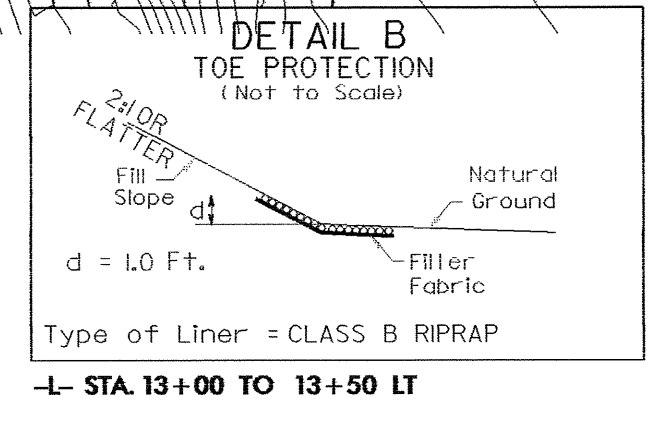
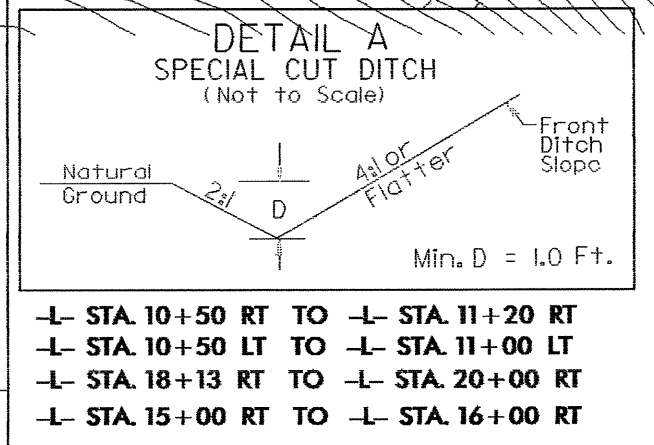
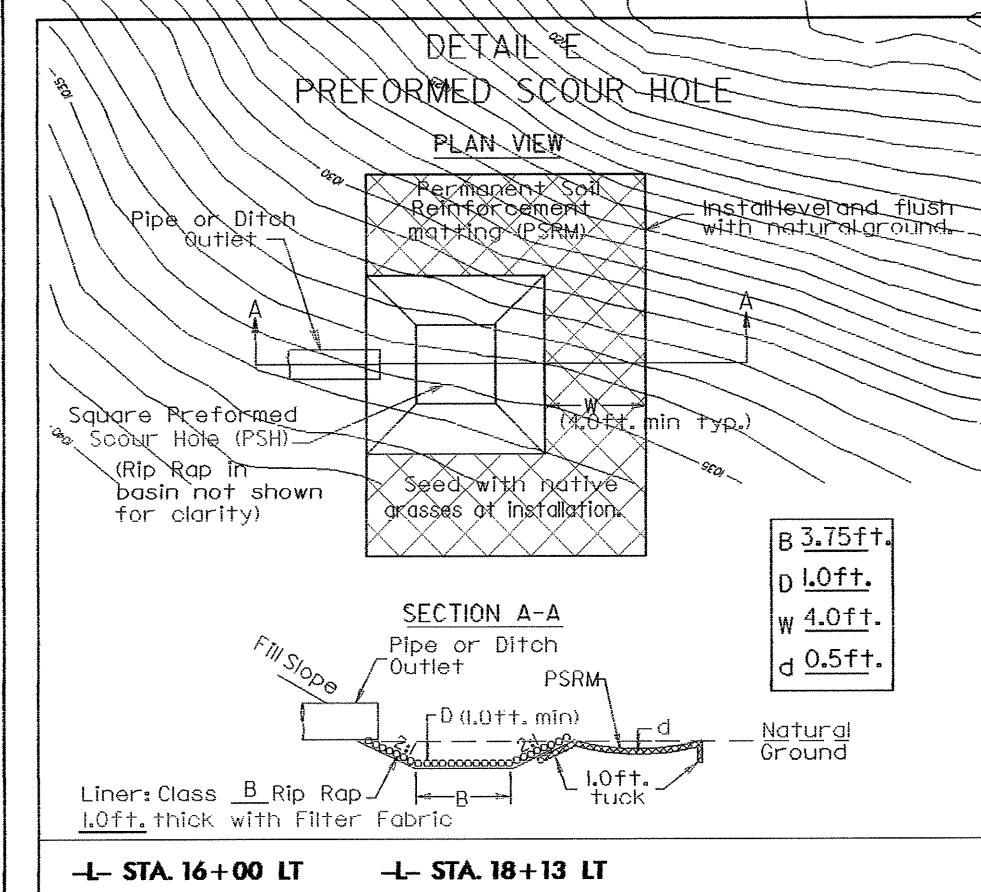
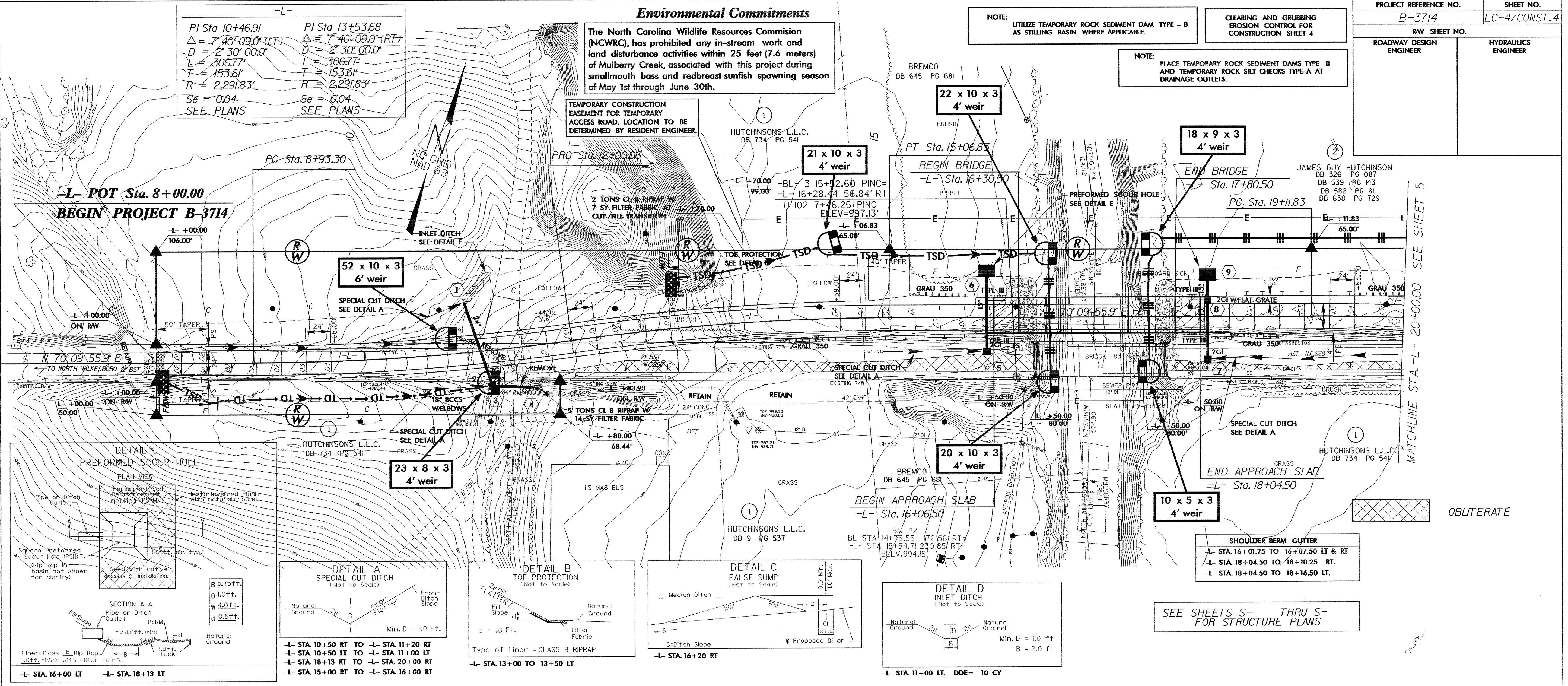
**Environmental Commitments**

The North Carolina Wildlife Resources Commission (NCWRC), has prohibited any in-stream work and land disturbance activities within 25 feet (7.6 meters) of Mulberry Creek, associated with this project during smallmouth bass and redbreast sunfish spawning season of May 1st through June 30th.

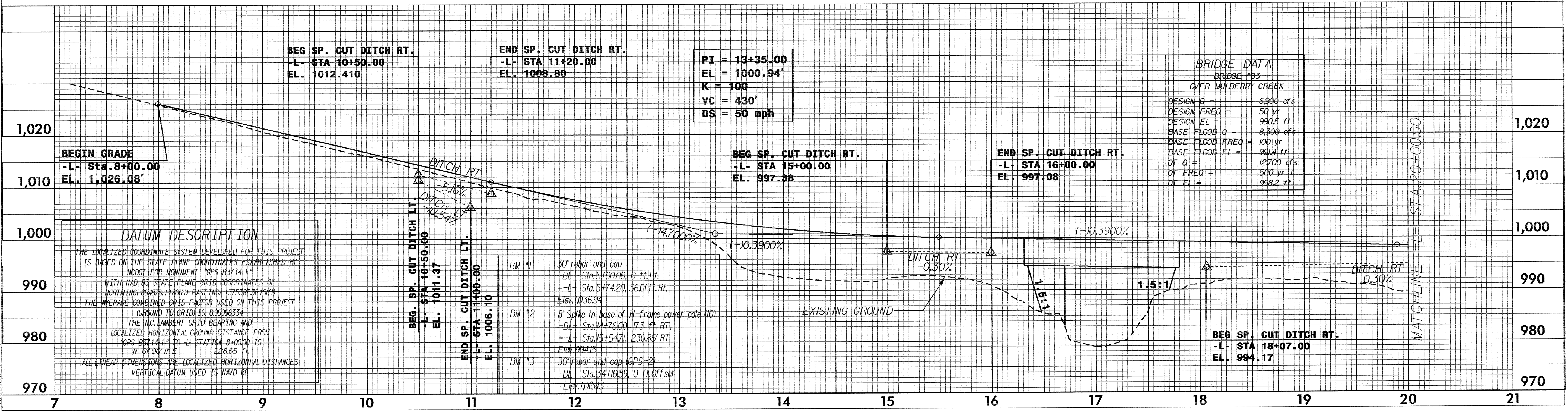
NOTE: UTILIZE TEMPORARY ROCK SEDIMENT DAM TYPE - B AS STILLING BASIN WHERE APPLICABLE.

CLEARING AND GRUBBING EROSION CONTROL FOR CONSTRUCTION SHEET 4

NOTE: PLACE TEMPORARY ROCK SEDIMENT DAMS TYPE- B AND TEMPORARY ROCK SILT CHECKS TYPE-A AT DRAINAGE OUTLETS.



SEE SHEETS S- THRU S- FOR STRUCTURE PLANS



04-1A-2005.10.40 D:\REV\trp\br\3714\roadway\Proj\B3714\_r0\psh\_04.cgr

MATCHLINE STA -L- 20+00.00 SEE SHEET 5

MATCHLINE -L- STA. 20+00.00