

5/17/02

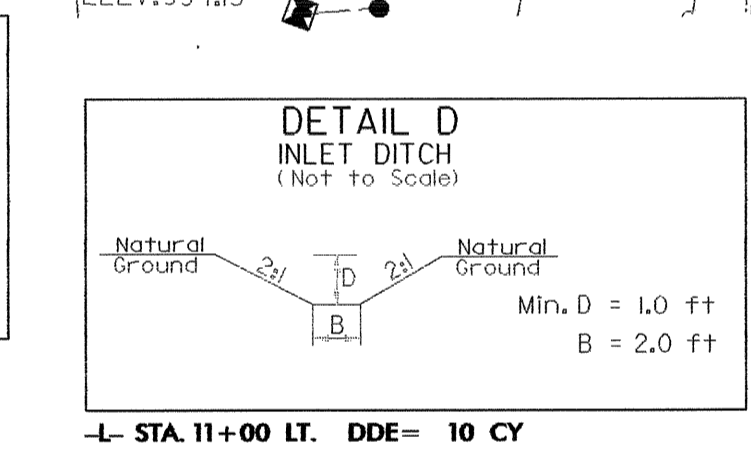
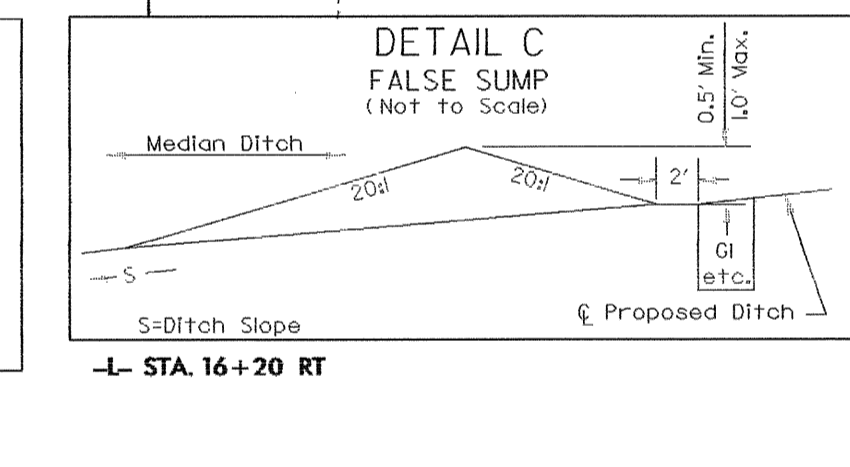
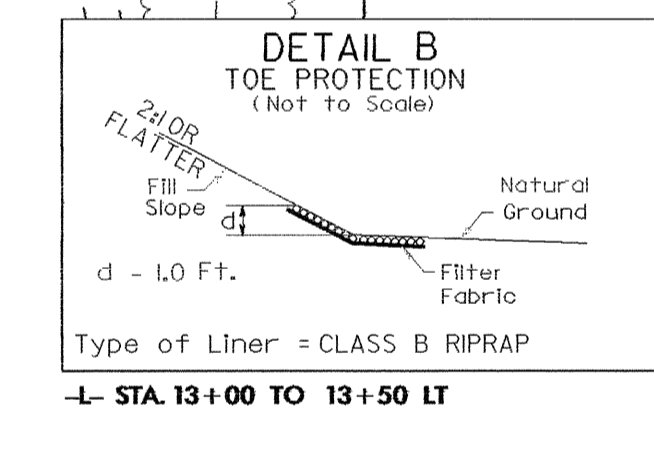
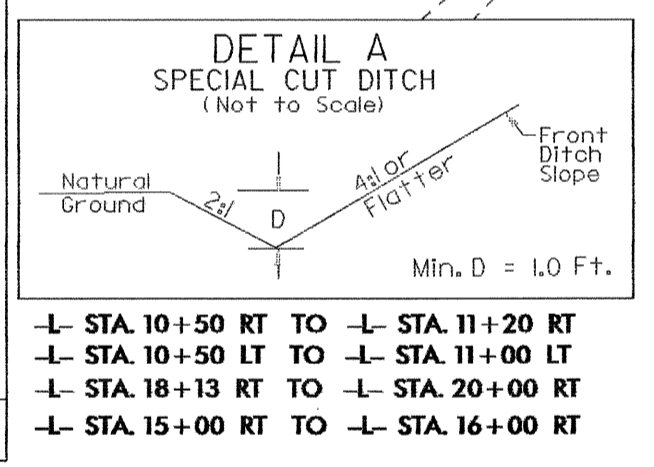
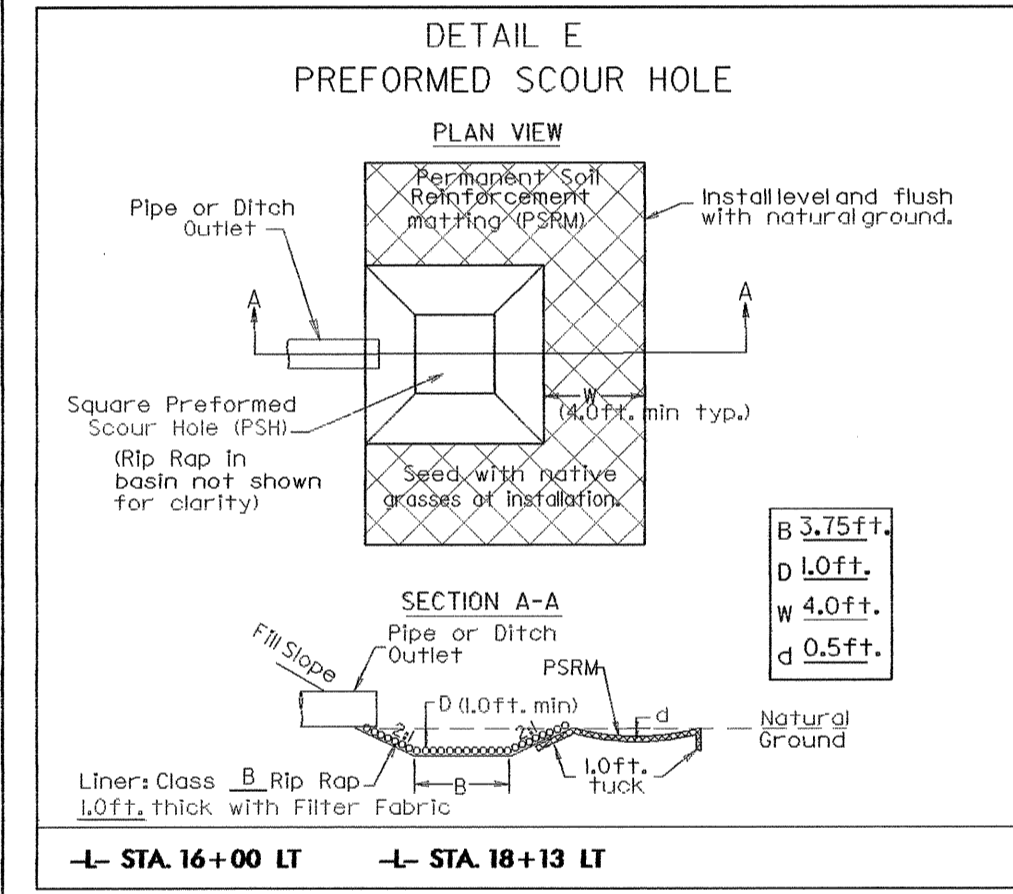
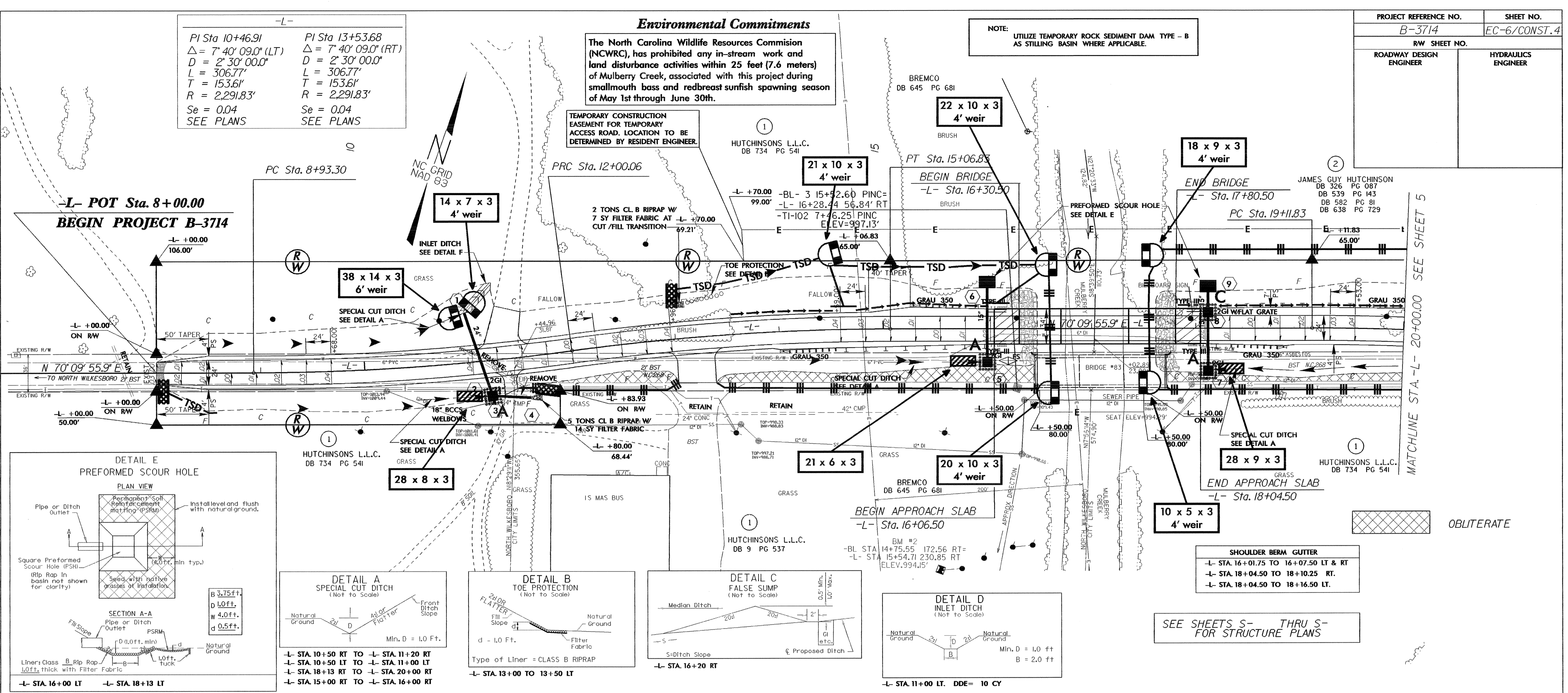
PI Sta 10+46.91 PI Sta 13+53.68
 $\Delta = 7^{\circ} 40' 09.0''$ (LT) $\Delta = 7^{\circ} 40' 09.0''$ (RT)
 $D = 2^{\circ} 30' 00.0''$ $D = 2^{\circ} 30' 00.0''$
 $L = 306.77'$ $L = 306.77'$
 $T = 153.61'$ $T = 153.61'$
 $R = 2,291.83'$ $R = 2,291.83'$
 $Se = 0.04$ $Se = 0.04$
 SEE PLANS SEE PLANS

Environmental Commitments

The North Carolina Wildlife Resources Commission (NCWRC), has prohibited any in-stream work and land disturbance activities within 25 feet (7.6 meters) of Mulberry Creek, associated with this project during smallmouth bass and redbreast sunfish spawning season of May 1st through June 30th.

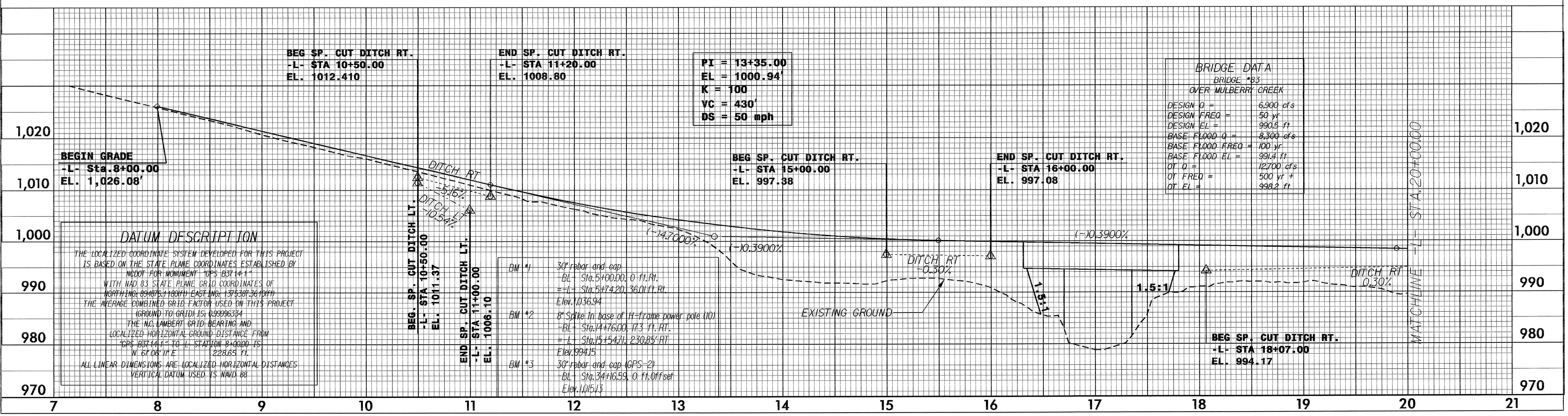
NOTE: UTILIZE TEMPORARY ROCK SEDIMENT DAM TYPE - B AS STILLING BASIN WHERE APPLICABLE.

PROJECT REFERENCE NO.	SHEET NO.
B-3714	EC-6/CONST.4
ROADWAY DESIGN ENGINEER	HYDRAULICS ENGINEER



SHOULDER BERM GUTTER
 -L- STA. 16+01.75 TO 16+07.50 LT & RT
 -L- STA. 18+04.50 TO 18+10.25 RT.
 -L- STA. 18+04.50 TO 18+16.50 LT.

SEE SHEETS S- THRU S- FOR STRUCTURE PLANS



DATUM DESCRIPTION

THE LOCALIZED COORDINATE SYSTEM DEVELOPED FOR THIS PROJECT IS BASED ON THE STATE PLANE COORDINATES ESTABLISHED BY NAD83 FOR MONUMENT "OPS-163714-1" WITH NAD 83 STATE PLANE GRID COORDINATES OF NORTHEING: 694671.11 (EASTING: 1372307.38 (N)) THE AVERAGE COMBINED GRID FACTOR USED ON THIS PROJECT (GROUND TO GRID) IS: 0.99996334

THE NAD 83 GRID BEARING AND LOCALIZED HORIZONTAL GROUND DISTANCE FROM "OPS-163714-1" TO LL STATION 8+000.00 IS: N 61.0811 E 228.65 FT.

ALL LINEAR DIMENSIONS ARE LOCALIZED HORIZONTAL DISTANCES. VERTICAL DATUM USED IS NAD 83.

04-JAN-2005 10:41:00 D:\REU\rip\bridge\B-3714\roadway\Proc\B3714_RD\PSH_04.dgn