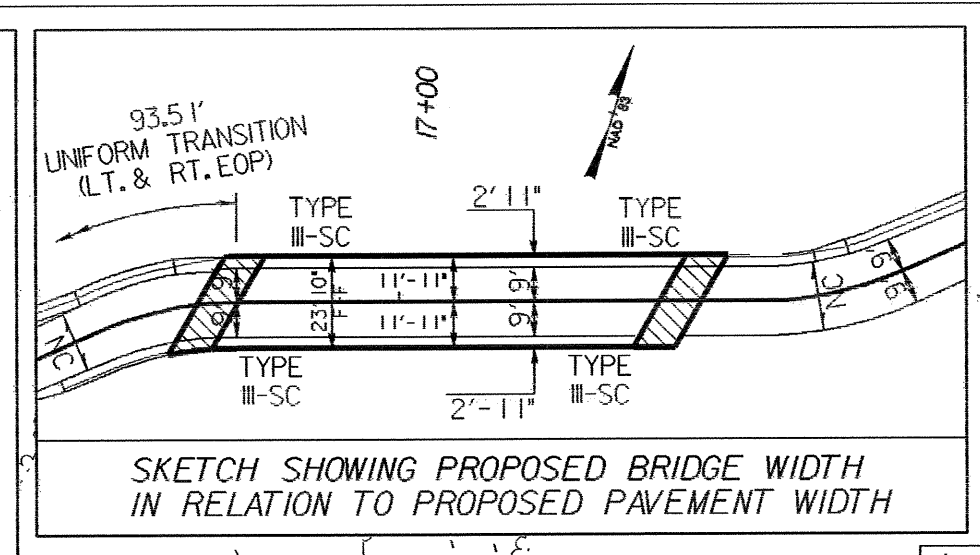


DATUM DESCRIPTION
 THE LOCALIZED COORDINATE SYSTEM DEVELOPED FOR THIS PROJECT IS BASED ON THE STATE PLANE COORDINATES ESTABLISHED BY NCOT FOR MONUMENT "B-3709-1" WITH STATE PLANE GRID COORDINATES OF NORTHING: 902083.8946(11) EASTING: 1,191,700.8974(11) THE AVERAGE COMBINED GRID FACTOR USED ON THIS PROJECT (GROUND TO GRID) IS: 0.99967953 THE N.C. LAMBERT GRID BEARINGS AND LOCALIZED HORIZONTAL GROUND DISTANCE FROM "B-3709-1" TO L-STA 15+25.00 IS S 66° 58' 43.5" W - 322.75 (11) ALL LINEAR DIMENSIONS ARE LOCALIZED HORIZONTAL DISTANCES VERTICAL DATUM USED IS NGVD 29



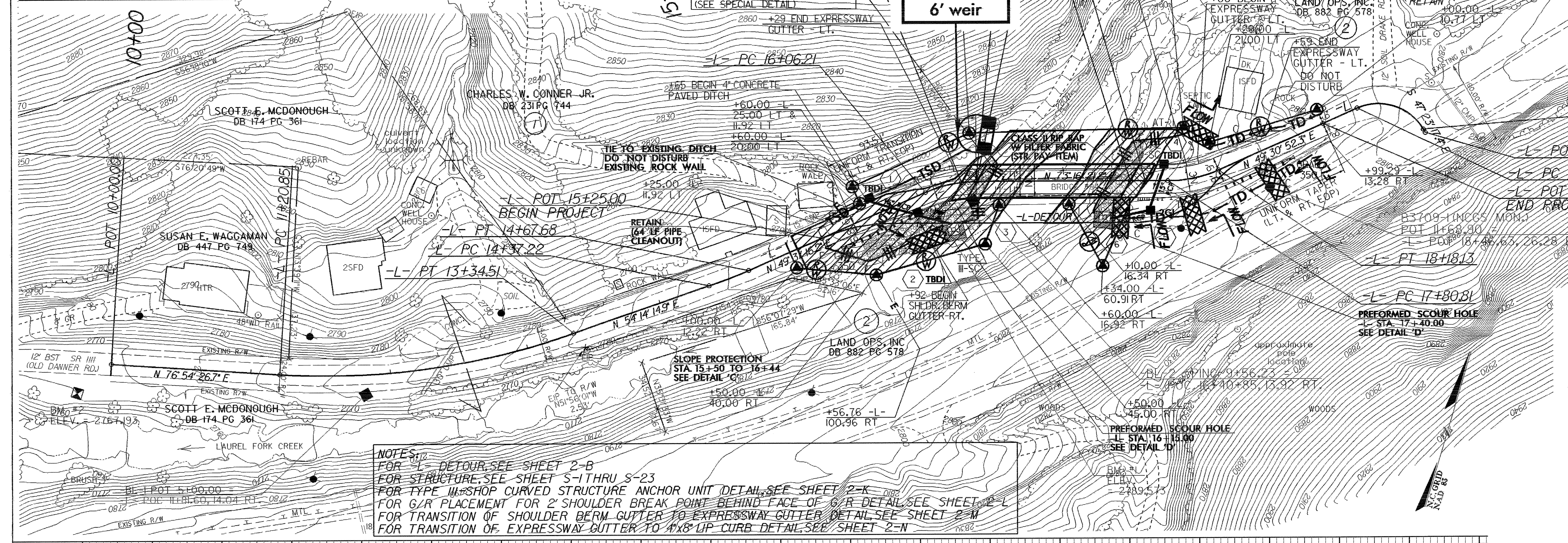
DESIGN EXCEPTION FOR 20mph DESIGN SPEED

CLEARING AND GRUBBING EROSION CONTROL FOR CONSTRUCTION SHEET 4

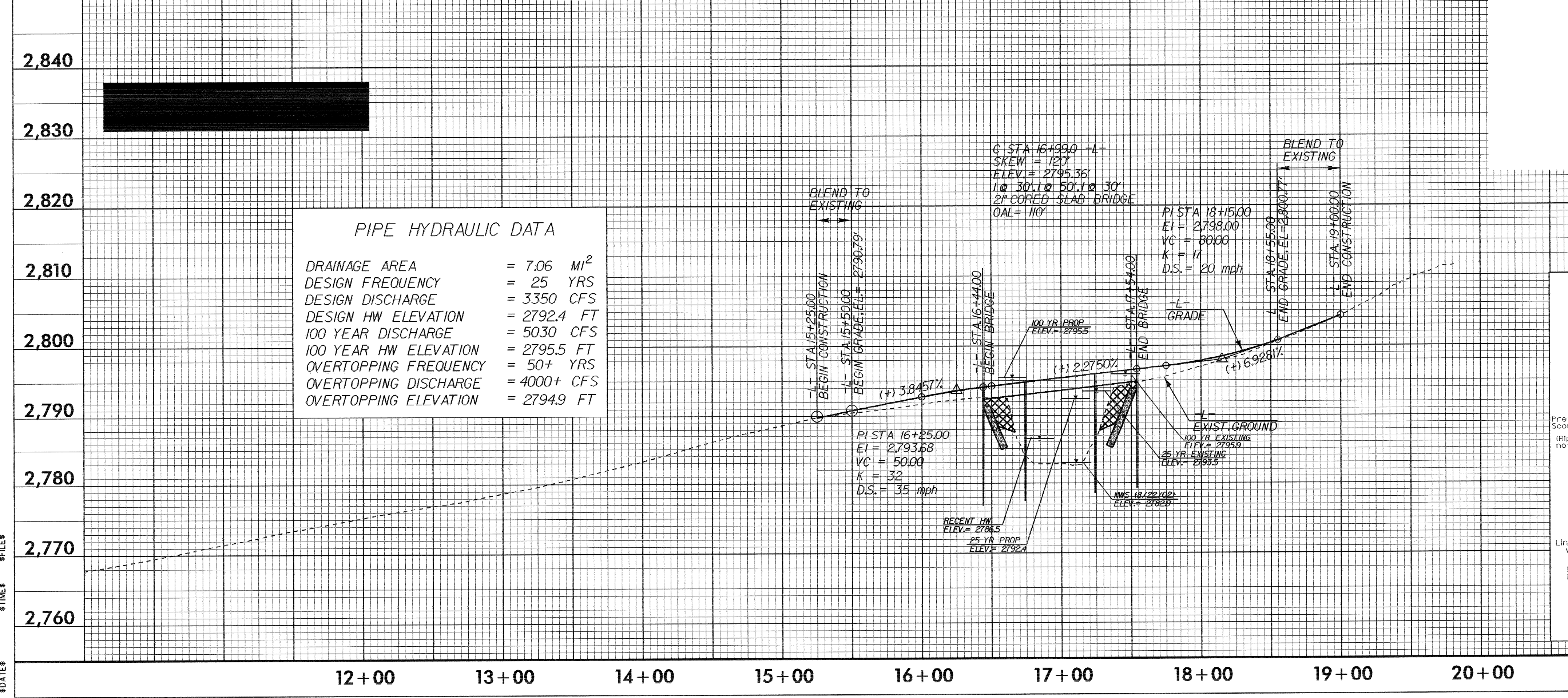
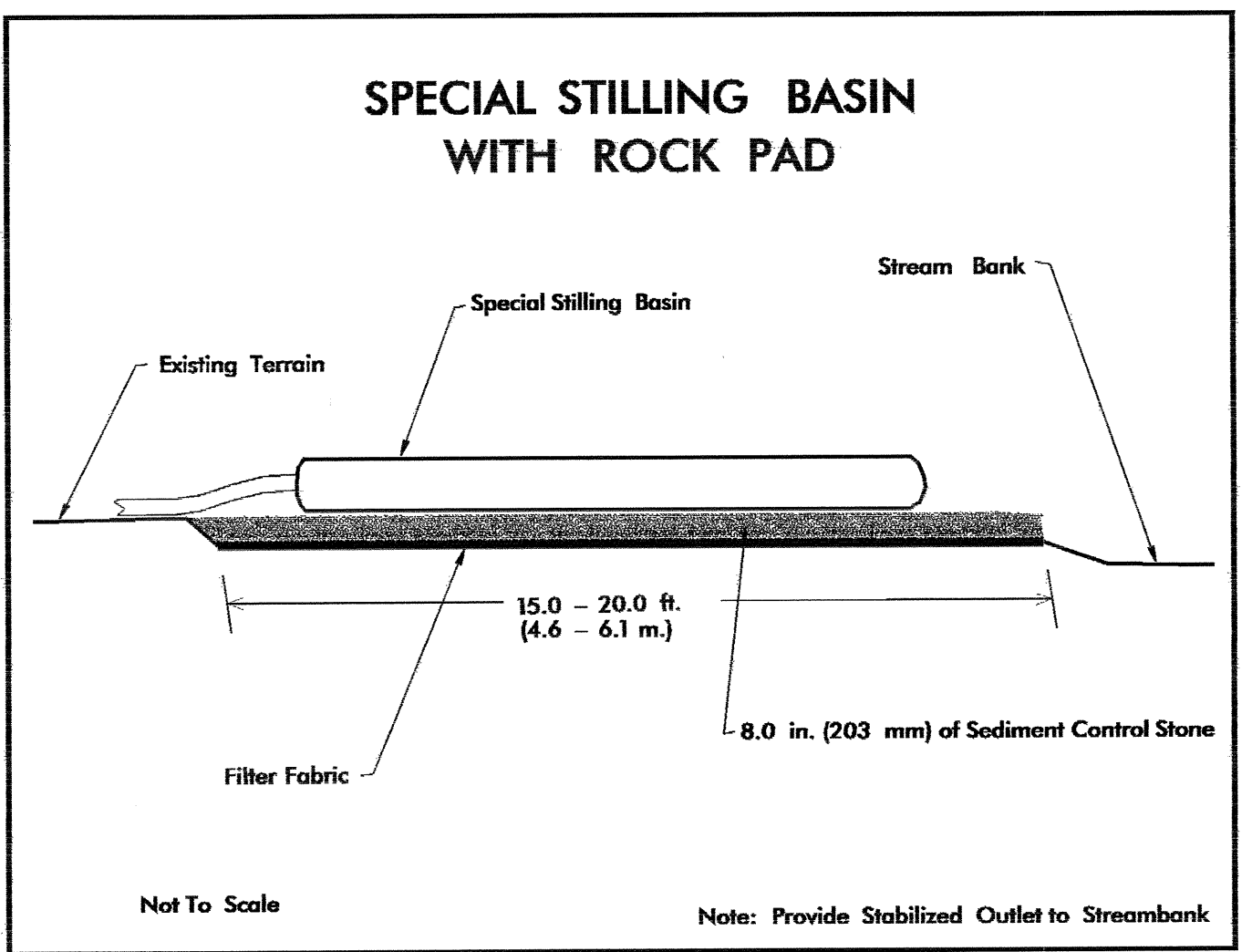
PROJECT REFERENCE NO.	SHEET NO.
B-3709	EC-4/CONST.4
R/W SHEET NO.	HYDRAULICS ENGINEER
ROADWAY DESIGN ENGINEER	

NOTE: PLACE TEMPORARY ROCK SEDIMENT DAMS TYPE - B AND TEMPORARY ROCK SILT CHECKS TYPE - A AT DRAINAGE OUTLETS.

NOTE: UTILIZE SPECIAL STILLING BASIN AS STILLING BASIN WHERE APPLICABLE.



NOTES:
 FOR DETOUR SEE SHEET 2-B
 FOR STRUCTURE SEE SHEET S-1 THRU S-23
 FOR TYPE W/SHOP CURVED STRUCTURE ANCHOR UNIT DETAIL SEE SHEET 2-K
 FOR G/R PLACEMENT FOR 2' SHOULDER BREAK POINT BEHIND FACE OF G/R DETAIL SEE SHEET 2-L
 FOR TRANSITION OF SHOULDER BERM GUTTER TO EXPRESSWAY GUTTER DETAIL SEE SHEET 2-N
 FOR TRANSITION OF EXPRESSWAY GUTTER TO 4'x8' UP CURB DETAIL SEE SHEET 2-N



Type of Liner = CLASS 1 RIP RAP				2,820
LINE	STA. TO STA.	RIP RAP (TONS)	FILTER FABRIC (SQ. YDS.)	
-L-	15+50 - 16+44 LT.	100	205	

NOTE: The Permanent Soil Reinforcement matting (PSR) shall be seeded with native grasses at installation.

STATION	B FT.	D FT.	W _{FR} FT.	d FT.	CLASS 1 RIP RAP TONS	DOE FT.	FABRIC FT.	PSRM FT.	2,760
-L- 16+5 LT.	4.0	1.0	4.0	0.5	6.0	475	230	180	
-L- 17+40 LT.	4.0	1.0	4.0	0.5	6.0	475	230	180	

9 DATES
 9 FILES