

PROJECT REFERENCE NO. R-2552AB		SHEET NO. 6	
R/W SHEET NO. R-2552AA "20 & "21"		HYDRAULICS ENGINEER	
ROADWAY DESIGN ENGINEER		HYDRAULICS ENGINEER	
PRELIMINARY PLANS DO NOT USE FOR CONSTRUCTION			
CONST.REV.		R/W REV.	

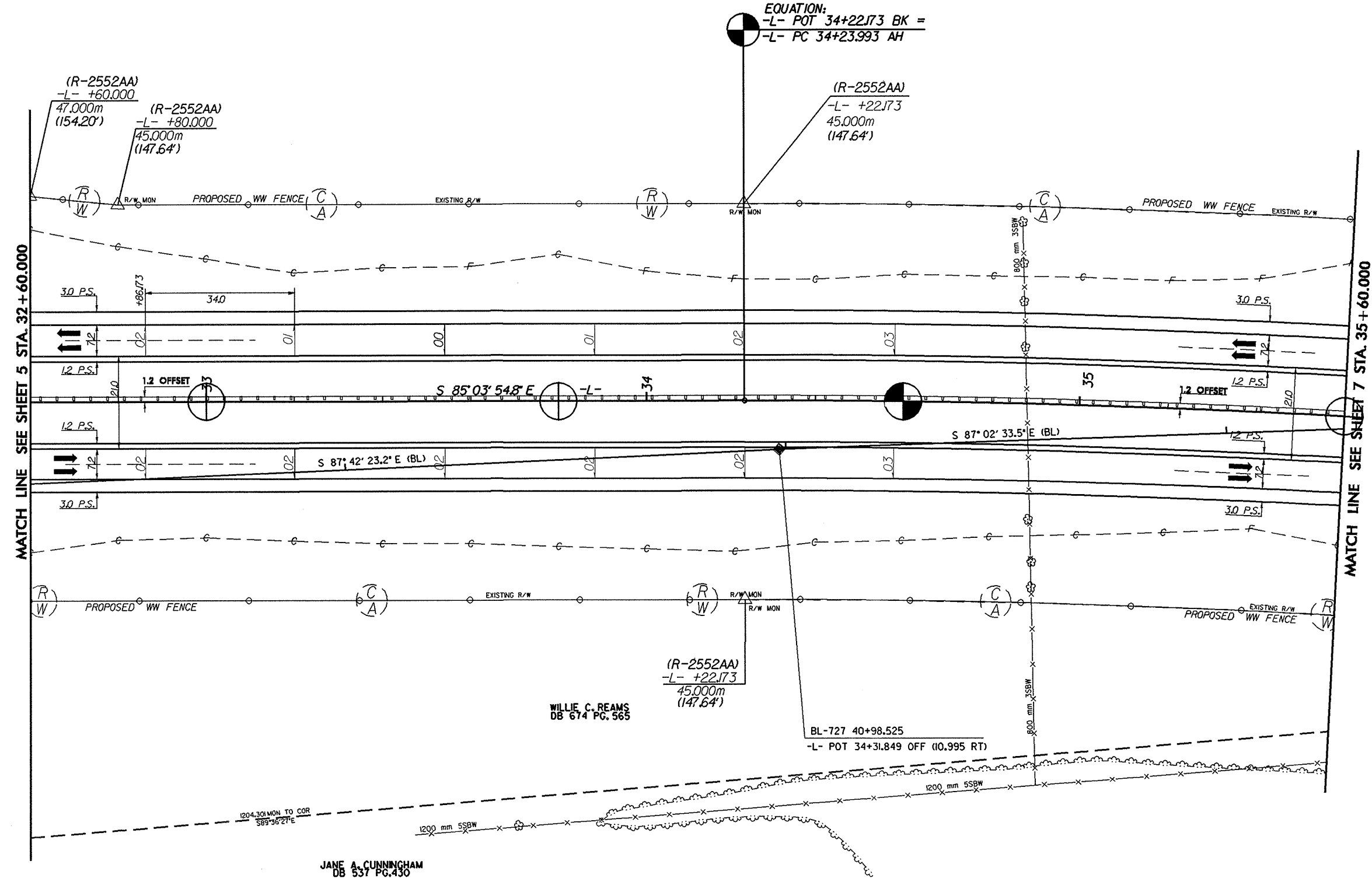
NOTE: SEE SHEETS 16 AND 17 FOR -L- PROFILE
SEE SHEET 2-C FOR DRAINAGE DETAILS

-L-
 $PI = 38+81.623$
 $\Delta = 20' 44" 47.5" (RT)$
 $L = 905.237$
 $T = 457.630$
 $R = 2,500.000$
 $SE = 03$
 $V_{des} = 110 \text{ km/hr}$

WILLIE C. REAMS
DB 674 PG. 565



EQUATION:
 -L- POT 34+22.173 BK =
 -L- PC 34+23.993 AH



WILLIE C. REAMS
DB 674 PG. 565

JANE A. CUNNINGHAM
DB 837 PG. 430

REVISIONS

 SYSTEMS
 DESIGN
 CONSULTANTS
 INC.
 1000
 UNIVERSITY
 AVENUE
 SUITE 100
 DALLAS, TX 75201
 (214) 742-1000
 WWW.SDCS.COM