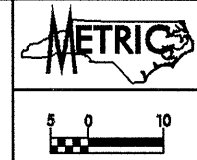


PROJECT REFERENCE NO. R-2552AB		SHEET NO. 7	
R/W SHEET NO. R-2552AA *21 & *22			
ROADWAY DESIGN ENGINEER		HYDRAULICS ENGINEER	
PRELIMINARY PLANS DO NOT USE FOR CONSTRUCTION			
CONST.REV.		R/W REV.	

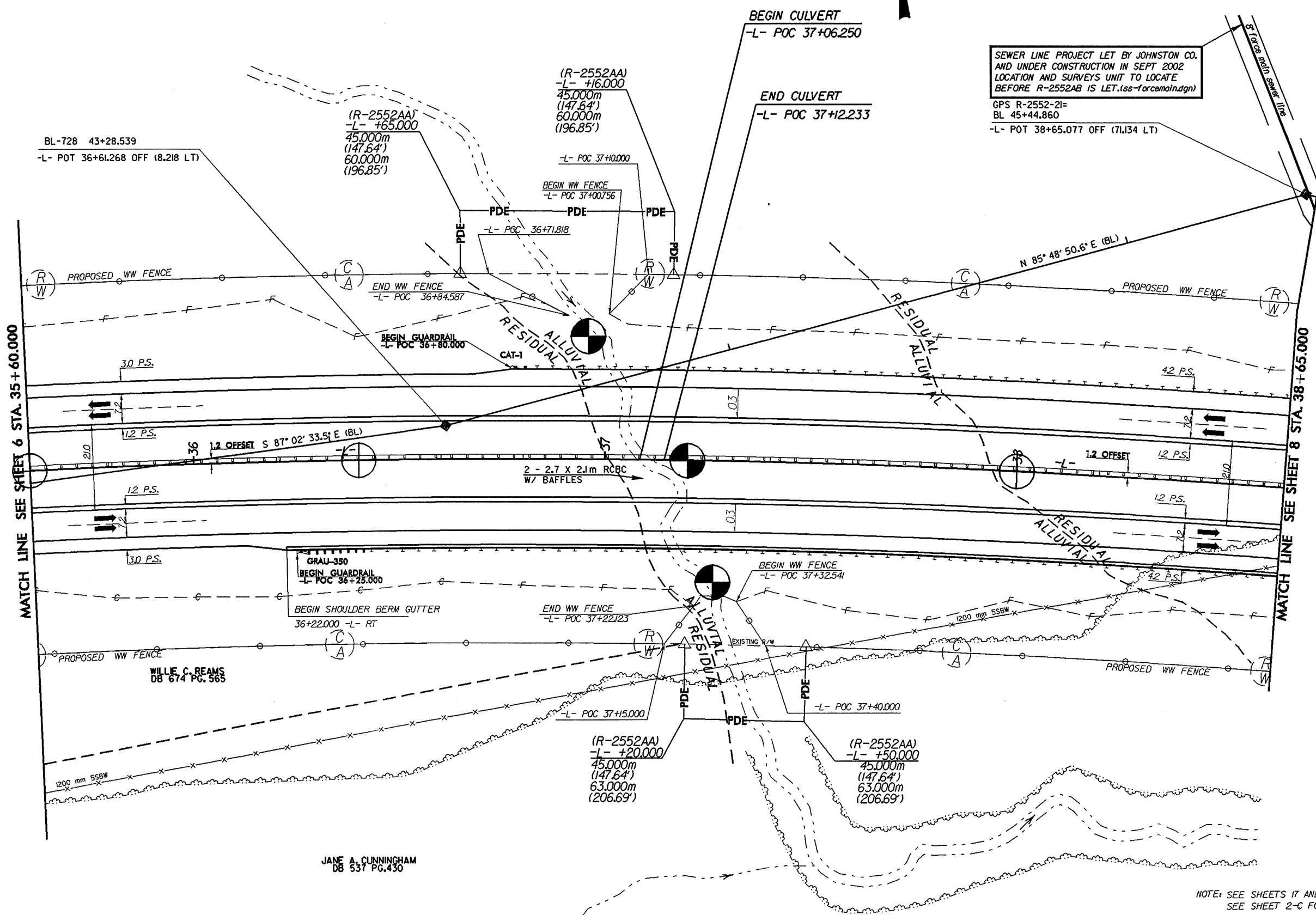


-L-
 PI = 38+81.623
 $\Delta = 20^\circ 44' 47.5''$ (RT)
 L = 905.237
 T = 457.630
 R = 2,500.000
 SE = .03
 V_{DES} = 110 km/hr

NAD 83

WILLIE C. REAMS
DB 674 PG. 565

SEWER LINE PROJECT LET BY JOHNSTON CO.
AND UNDER CONSTRUCTION IN SEPT 2002
LOCATION AND SURVEYS UNIT TO LOCATE
BEFORE R-2552AB IS LET. (ss-for-cem-in-dgn)
 GPS R-2552-21=
 BL 45+44.860
 -L- POT 38+65.077 OFF (71.134 LT)



MATCH LINE SEE SHEET 6 STA. 35 + 60.000

MATCH LINE SEE SHEET 8 STA. 38 + 65.000

WILLIE C. REAMS
DB 674 PG. 565

JANE A. CUNNINGHAM
DB 537 PG. 430

NOTE: SEE SHEETS 17 AND 18 FOR -L- PROFILE
SEE SHEET 2-C FOR DRAINAGE DETAILS

REVISIONS

*****SYSTEMS*****
*****CONSTRUCTION*****
*****USER NAME*****