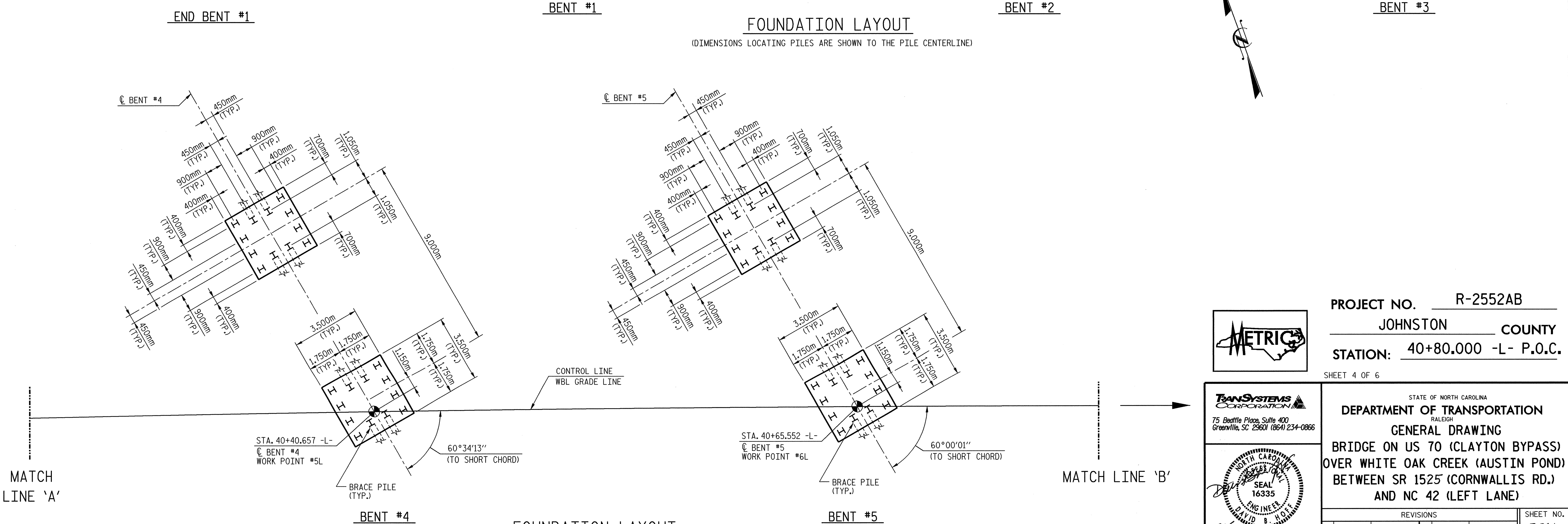


- NOTES:**
1. ALL PILES ARE STEEL HP310 x 79.
 2. BRACE PILES ARE BATTERED 125:1000 @ BENTS.
 3. BRACE PILES ARE BATTERED 250:1000 @ ENDBENTS.



PROJECT NO. R-2552AB
 JOHNSTON COUNTY
 STATION: 40+80.000 -L- P.O.C.
 SHEET 4 OF 6



TRANSYSTEMS CORPORATION
 75 Beattie Place, Suite 400
 Greenville, SC 29601 (864) 234-0866

STATE OF NORTH CAROLINA
DEPARTMENT OF TRANSPORTATION
 RALEIGH

GENERAL DRAWING
 BRIDGE ON US 70 (CLAYTON BYPASS)
 OVER WHITE OAK CREEK (AUSTIN POND)
 BETWEEN SR 1525 (CORNWALLIS RD.)
 AND NC 42 (LEFT LANE)

SEAL
 16335
 ENGINEER
 DAVID B. HOFF

3705
 DWG. NO. 4
 TOTAL 68

REVISIONS			
NO.	BY:	DATE:	NO.
1			3
2			4

SHEET NO. S-261
 TOTAL SHEETS 429

DRAWN BY: M.T. BELISLE DATE: 1/02
 CHECKED BY: D.B. HOFF DATE: 3/02