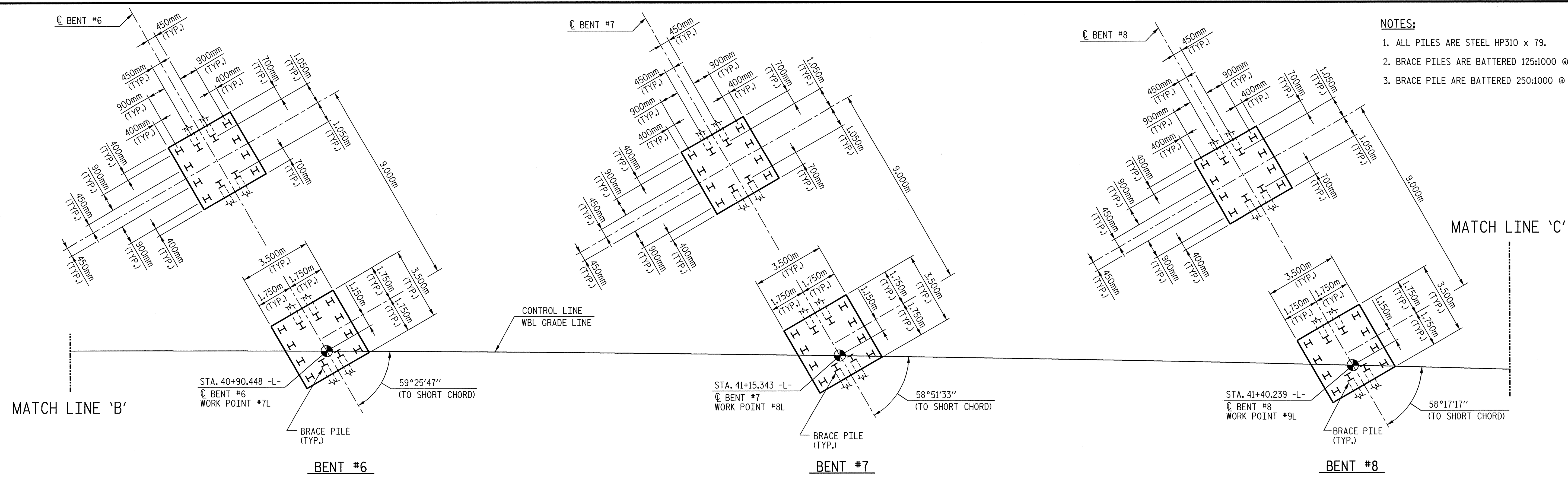
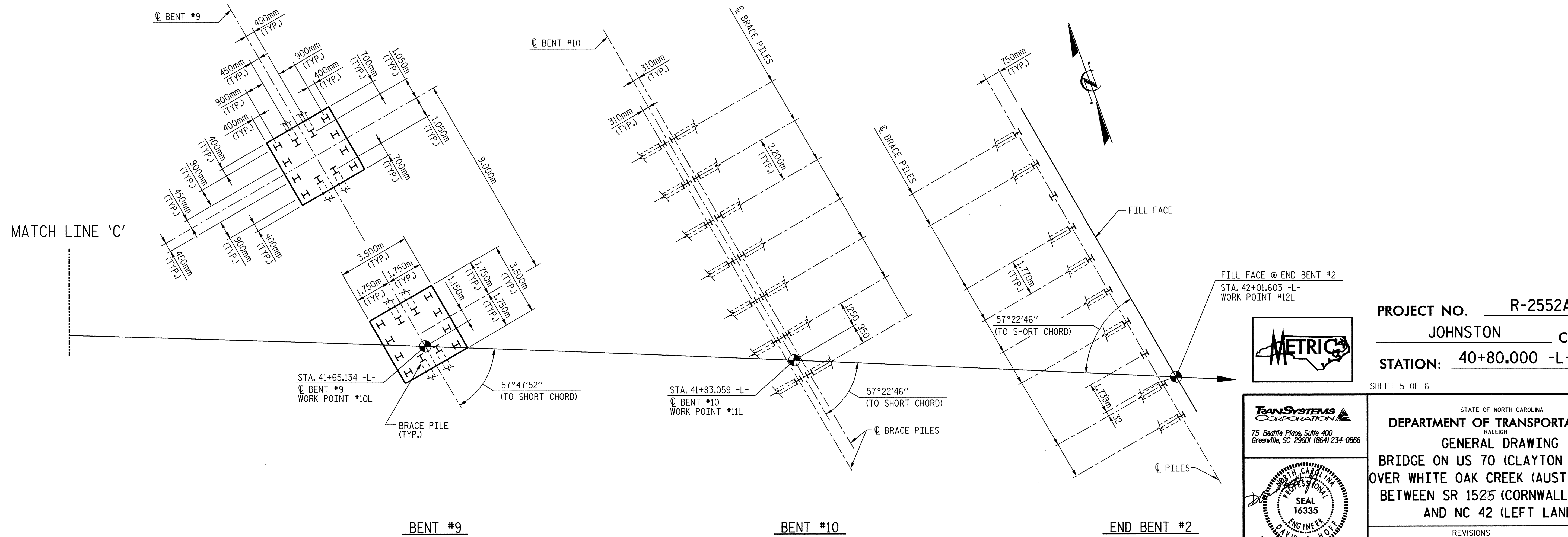


- NOTES:**
1. ALL PILES ARE STEEL HP310 x 79.
  2. BRACE PILES ARE BATTERED 125:1000 @ BENTS.
  3. BRACE PILE ARE BATTERED 250:1000 @ ENDBENTS.



**FOUNDATION LAYOUT**

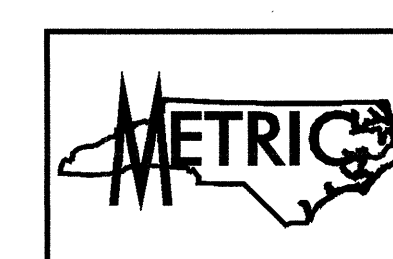
(DIMENSIONS LOCATING PILES ARE SHOWN TO THE PILE CENTERLINE)



**FOUNDATION LAYOUT**

(DIMENSIONS LOCATING PILES ARE SHOWN TO THE PILE CENTERLINE)

FILL FACE @ END BENT #2  
STA. 42+01.603 -L-  
WORK POINT #12L



PROJECT NO. R-2552AB  
JOHNSTON COUNTY  
STATION: 40+80.000 -L- P.O.C.  
SHEET 5 OF 6

**TRANSYSTEMS CORPORATION**  
75 Beattie Place, Suite 400  
Greenville, SC 29601 (864) 234-0866

**DAVID B. HOFF**  
SEAL 16335  
ENGINEER

DWG. NO. 5 TOTAL 68

STATE OF NORTH CAROLINA  
DEPARTMENT OF TRANSPORTATION  
RALEIGH

**GENERAL DRAWING**  
BRIDGE ON US 70 (CLAYTON BYPASS)  
OVER WHITE OAK CREEK (AUSTIN POND)  
BETWEEN SR 1525 (CORNWALLIS RD.)  
AND NC 42 (LEFT LANE)

REVISIONS					
NO.	BY:	DATE:	NO.	BY:	DATE:
1			3		
2			4		

SHEET NO. S-262  
TOTAL SHEETS 429

DRAWN BY : M.T. BELISLE DATE : 1/02  
CHECKED BY : D.B. HOFF DATE : 3/02

FILES \$  
DATES \$  
TIMES \$