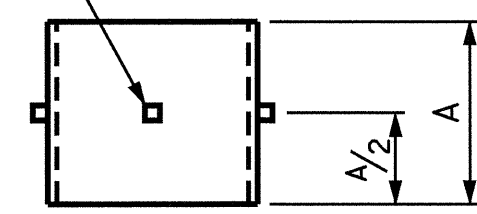
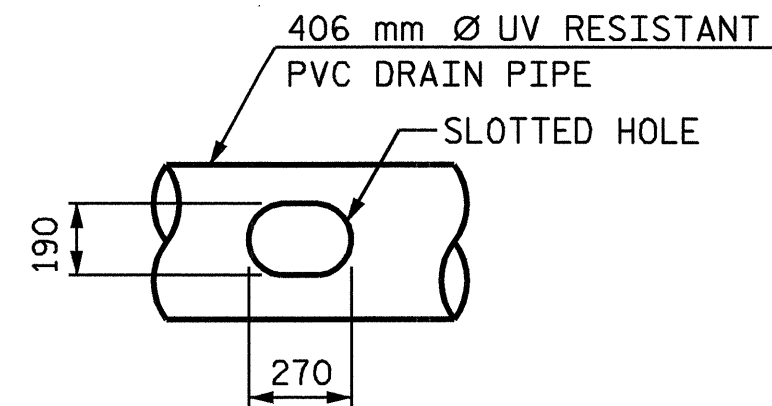


4 - 13 mm □ LUGS TO BE GLUED TO THE PVC PLASTIC COUPLING AT EQUAL SPACES AROUND THE COUPLING.

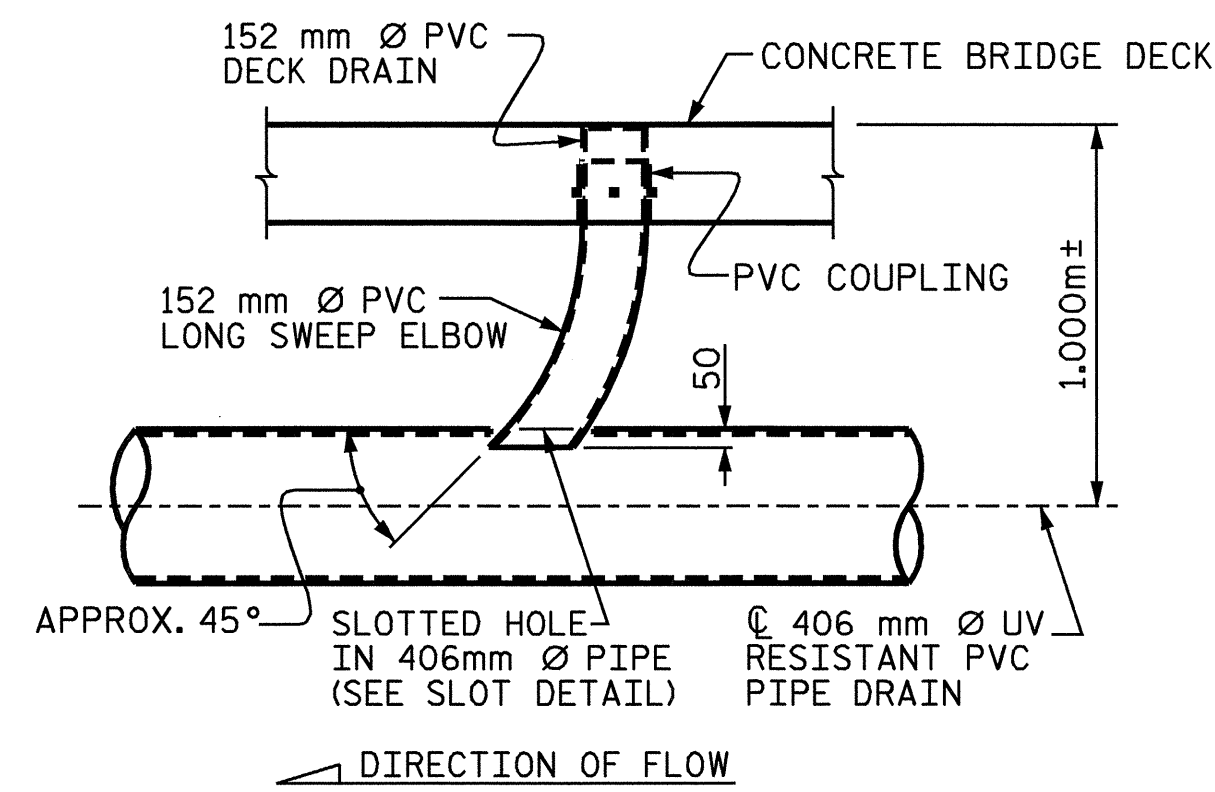


COUPLING DETAIL

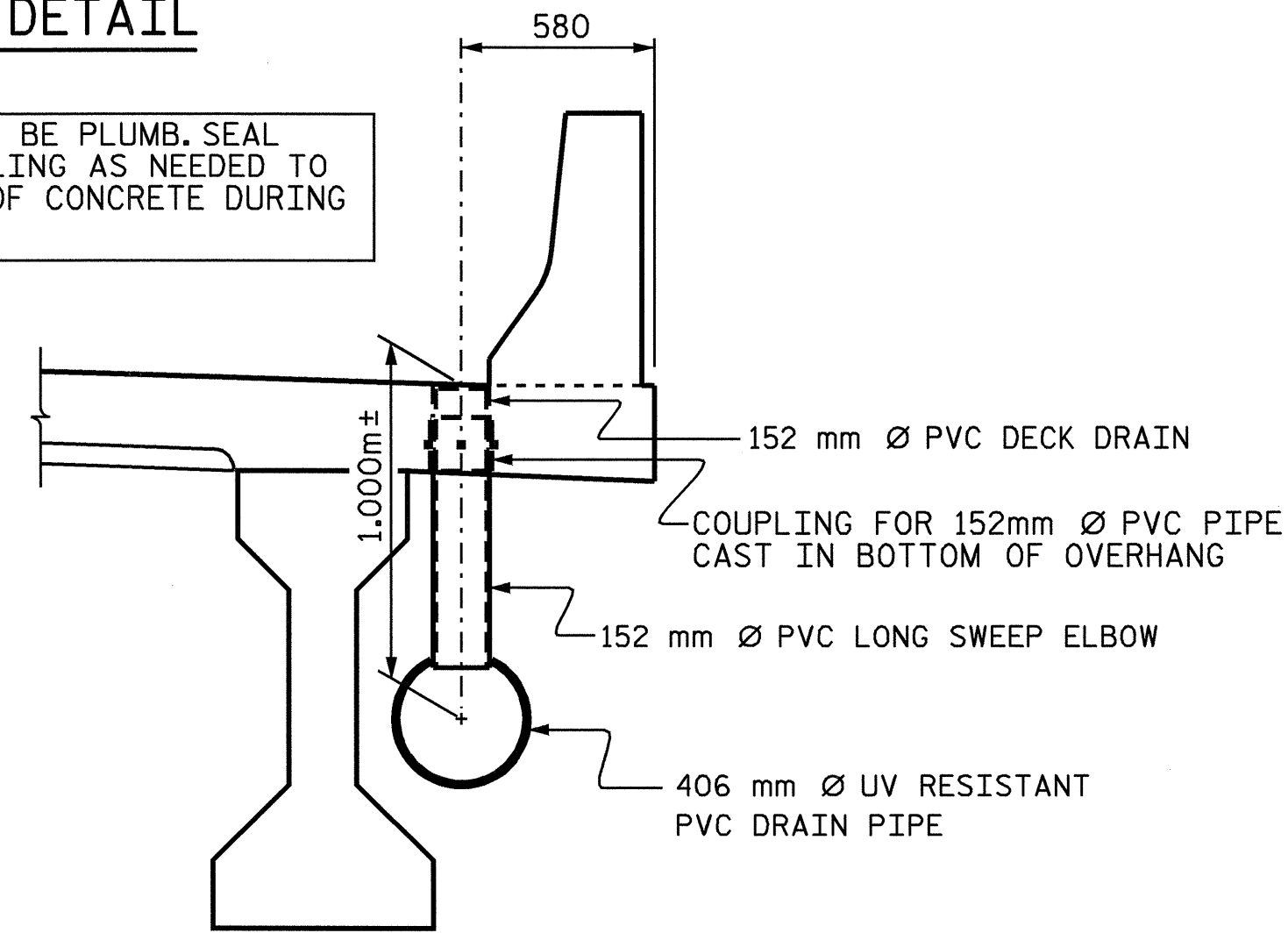


SLOT DETAIL

NOTE: COUPLING SHALL BE PLUMB. SEAL THE BOTTOM OF COUPLING AS NEEDED TO PREVENT INTRUSION OF CONCRETE DURING POURING OF DECK.



SIDE VIEW



SECTION VIEW

DRAIN OUTLET DETAILS

NOTES:

FOR LOCATIONS OF DECK DRAINS, SEE "PLAN OF SPANS" SHEETS.

THE DRAINAGE SYSTEM DETAILS ARE SCHEMATIC DRAWINGS ONLY.

DRAINAGE SYSTEM WILL BE PAID FOR AS LUMP SUM UNDER THE PAY ITEM "STRUCTURE DRAINAGE SYSTEM".

FOR "STRUCTURE DRAINAGE SYSTEM", SEE SPECIAL PROVISIONS.

PRIOR TO PURCHASE, THE CONTRACTOR SHALL SUBMIT FOR ACCEPTANCE A PLAN FOR THE PVC DRAINAGE SYSTEM. ATTACHMENTS TO THE BRIDGE SUPERSTRUCTURE SHALL BE INCLUDED WITH THE PLAN.

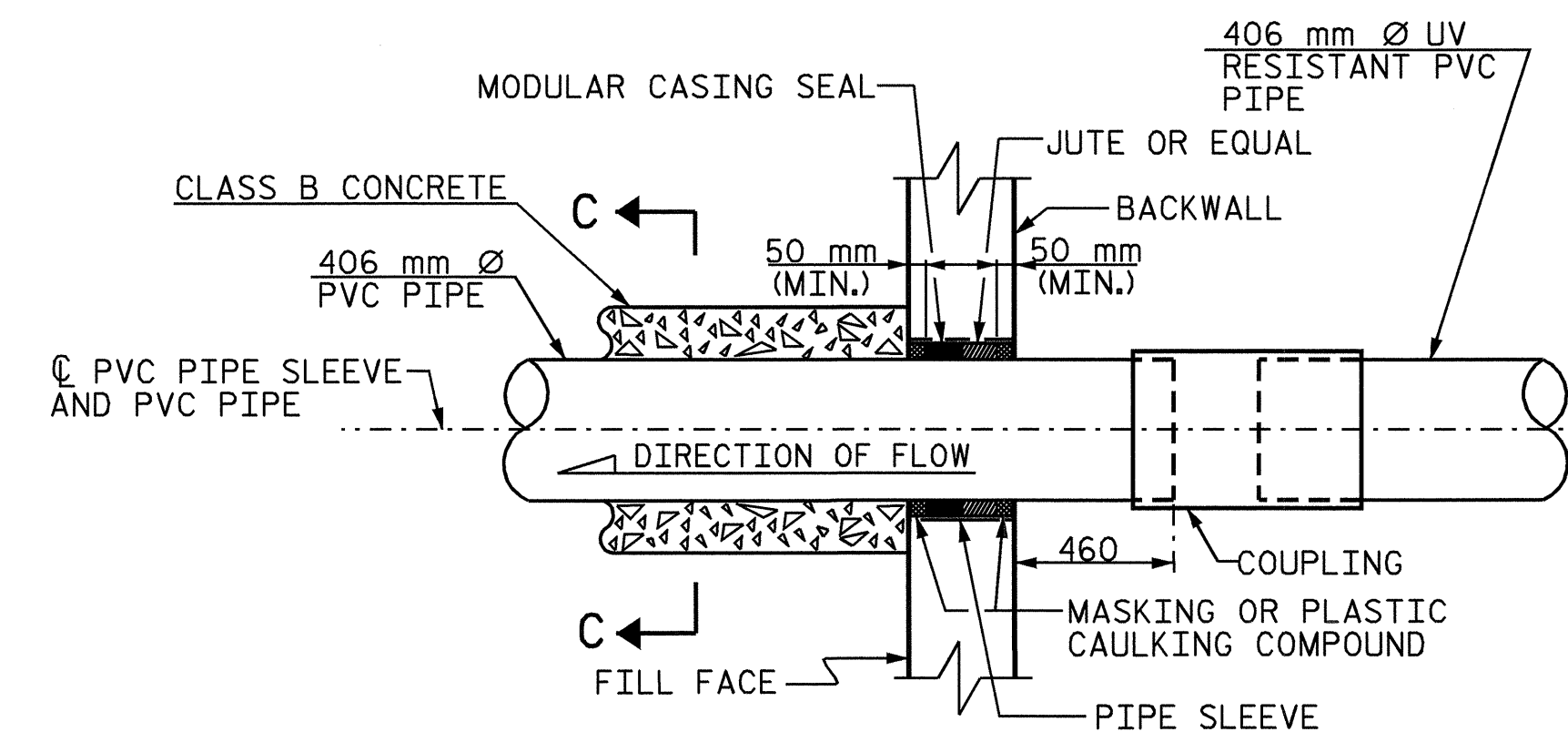
THE CONTRACTOR SHALL BE RESPONSIBLE FOR DETERMINING THE HORIZONTAL AND VERTICAL ALIGNMENT OF THE PVC DRAINAGE SYSTEM USING THE NECESSARY FITTINGS, ELBOWS, TEES AND WYES TO PROVIDE A CONTINUOUS DRAINAGE SYSTEM.

PROVIDE EXPANSION JOINTS IN DRAINAGE SYSTEM PIPE AT A MAXIMUM SPACING OF 7.5 METERS.

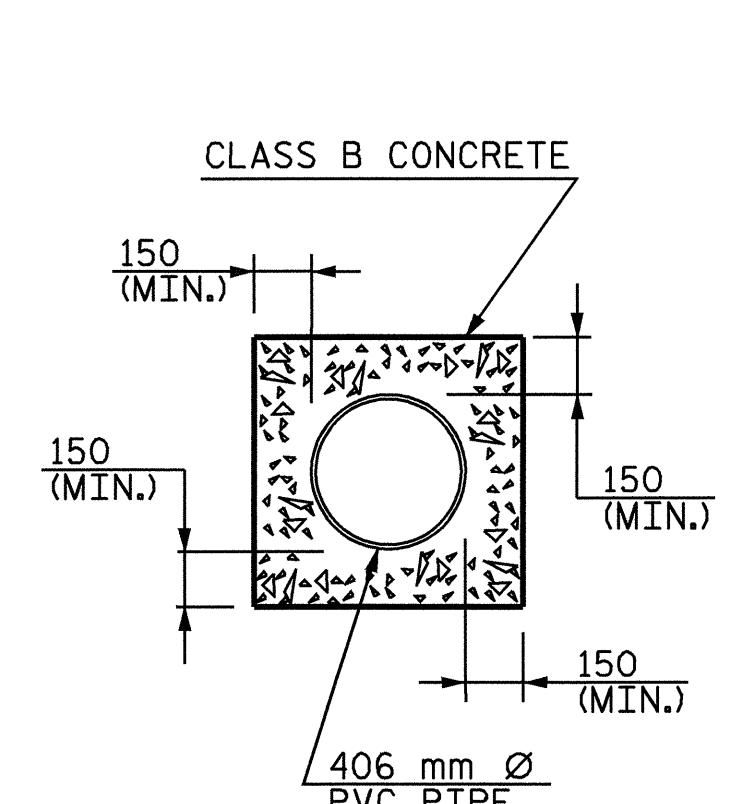
TOP OF DECK DRAINS TO BE SET 10 mm BELOW SURFACE OF SLAB.

PVC PIPE AND FITTINGS SHALL BE SCHEDULE 40 AND CONFORM TO ASTM D1785.

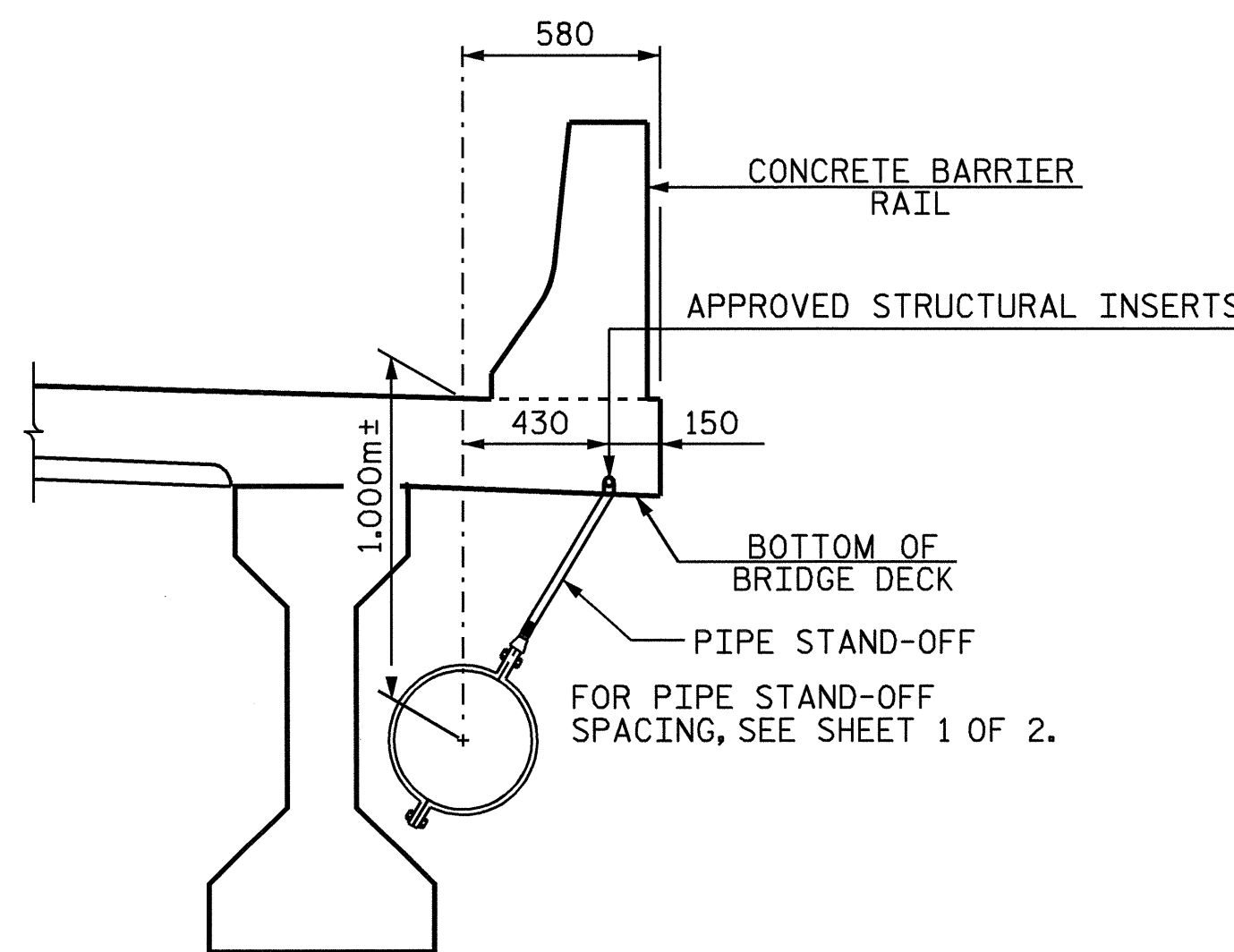
PVC PIPE AND FITTINGS SHALL UV RESISTANT.



DETAIL "A"

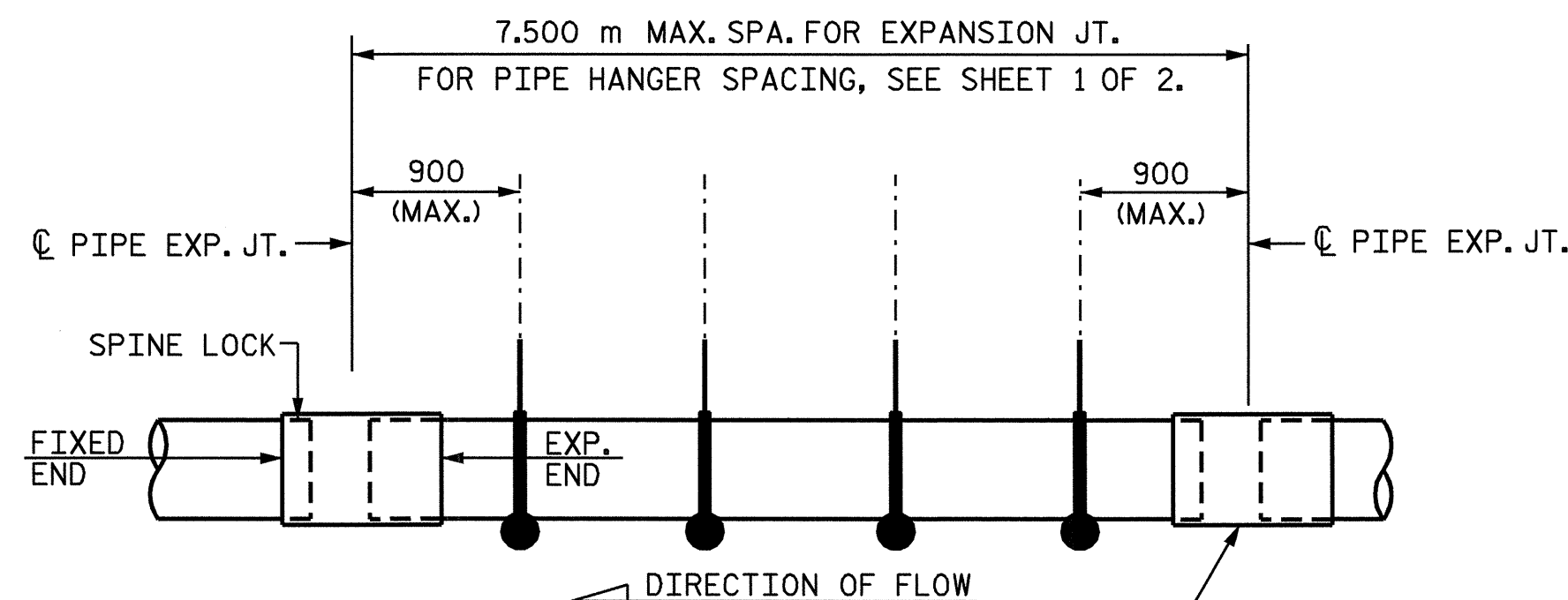


SECTION "C"



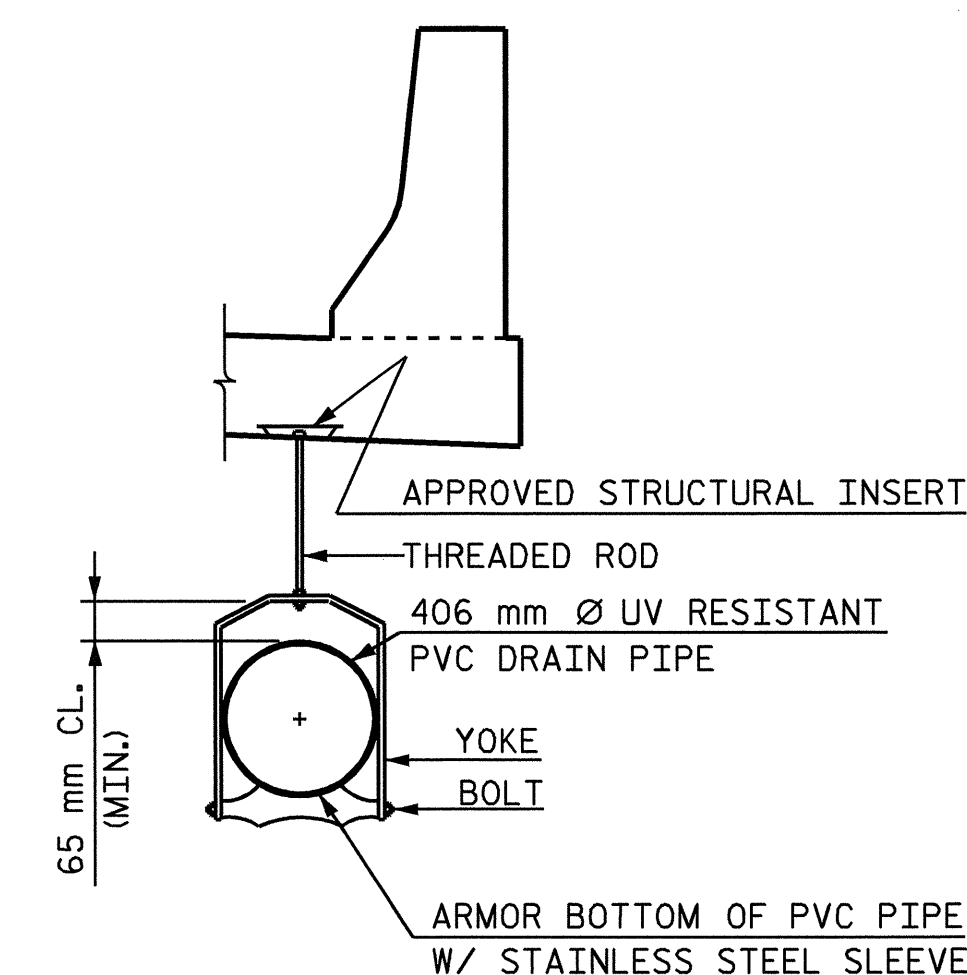
PIPE STAND-OFF DETAIL

ALL COMPONENTS SHALL BE GALVANIZED AFTER FABRICATION.



EXPANSION COUPLING DETAIL

PVC EXPANSION DRAIN COUPLINGS SHALL CONTAIN A METHOD OF RESTRAINT TO PREVENT PULLOUT.



PIPE HANGER DETAIL

ALL COMPONENTS SHALL BE GLAVANIZED AFTER FABRICATION.

PROJECT NO. R-2552AB

JOHNSTON COUNTY

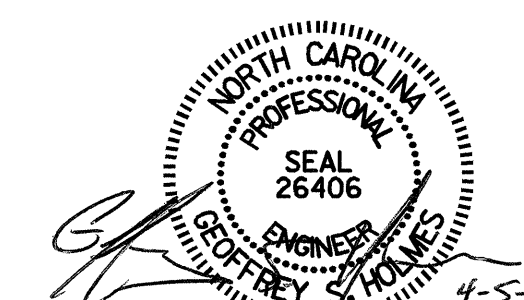
STATION: 40+80.000 -L- P.O.C.

SHEET 2 OF 2

STATE OF NORTH CAROLINA
DEPARTMENT OF TRANSPORTATION
RALEIGH

SUPERSTRUCTURE
CLOSED DRAINAGE SYSTEM
DETAILS

(LEFT LANE)



DRAWN BY : P. S. ERVIN DATE : 3-29-05
CHECKED BY : H. A. LUCAS DATE : 3-30-05

05-APR-2005 08:13
S:\PG3\2552-1\NR2552A-2.DGN
gsholmes

REVISIONS						SHEET NO.
NO.	BY:	DATE:	NO.	BY:	DATE:	5-276
1			3			TOTAL SHEETS
2			4			429