

NOTES

ALL PRESTRESSING STRANDS SHALL BE 7-WIRE LOW-RELAXATION GRADE 270 STRANDS AND SHALL CONFORM TO AASHTO M203M EXCEPT FOR SAMPLING REQUIREMENTS WHICH SHALL BE IN ACCORDANCE WITH THE STANDARD SPECIFICATIONS.

TIE ROD ASSEMBLY SHALL BE AASHTO M270 GRADE 250 STRUCTURAL STEEL.

ALL REINFORCING STEEL SHALL BE GRADE 420.

APPLY EPOXY PROTECTIVE COATING TO END OF GIRDER SURFACES INDICATED IN ELEVATION VIEW. FOR EPOXY PROTECTIVE COATING, SEE SPECIAL PROVISIONS.

EMBEDDED PLATE "B-1" SHALL BE GALVANIZED IN ACCORDANCE WITH THE SPECIFICATIONS. BEVEL EDGES OF PLATE "B-1" TO GIVE CLOSE FIT BUT NOT TIGHT FIT TO STEEL CASTING FORM.

ANCHOR STUDS SHALL CONFORM TO AASHTO M169 GRADES 1010 THROUGH 1020 OR APPROVED EQUAL, AND SHALL MEET THE TYPE "B" REQUIREMENTS OF SUBSECTION 7.3 OF THE ANSI/AASHTO/AWS D1.5 BRIDGE WELDING CODE.

AT ENDS OF GIRDERS TO BE EMBEDDED IN CONCRETE DIAPHRAGMS OR END WALLS, PRESTRESSING STRANDS MAY EXTEND A MAXIMUM OF 50mm BEYOND THE GIRDER ENDS. OTHERWISE, PRESTRESSING STRANDS SHALL BE CUT FLUSH WITH THE GIRDER ENDS.

THE TRANSFER OF LOAD FROM THE ANCHORAGES TO THE GIRDER SHALL BE DONE WHEN CONCRETE HAS REACHED A COMPRESSIVE STRENGTH OF NOT LESS THAN 27.6 MPa.

DEPENDING ON THE TYPE OF SYSTEM USED TO SUPPORT THE DECK SLAB FORMS, PRESET ANCHORS MAY BE NECESSARY IN THE PRESTRESSED CONCRETE GIRDER.

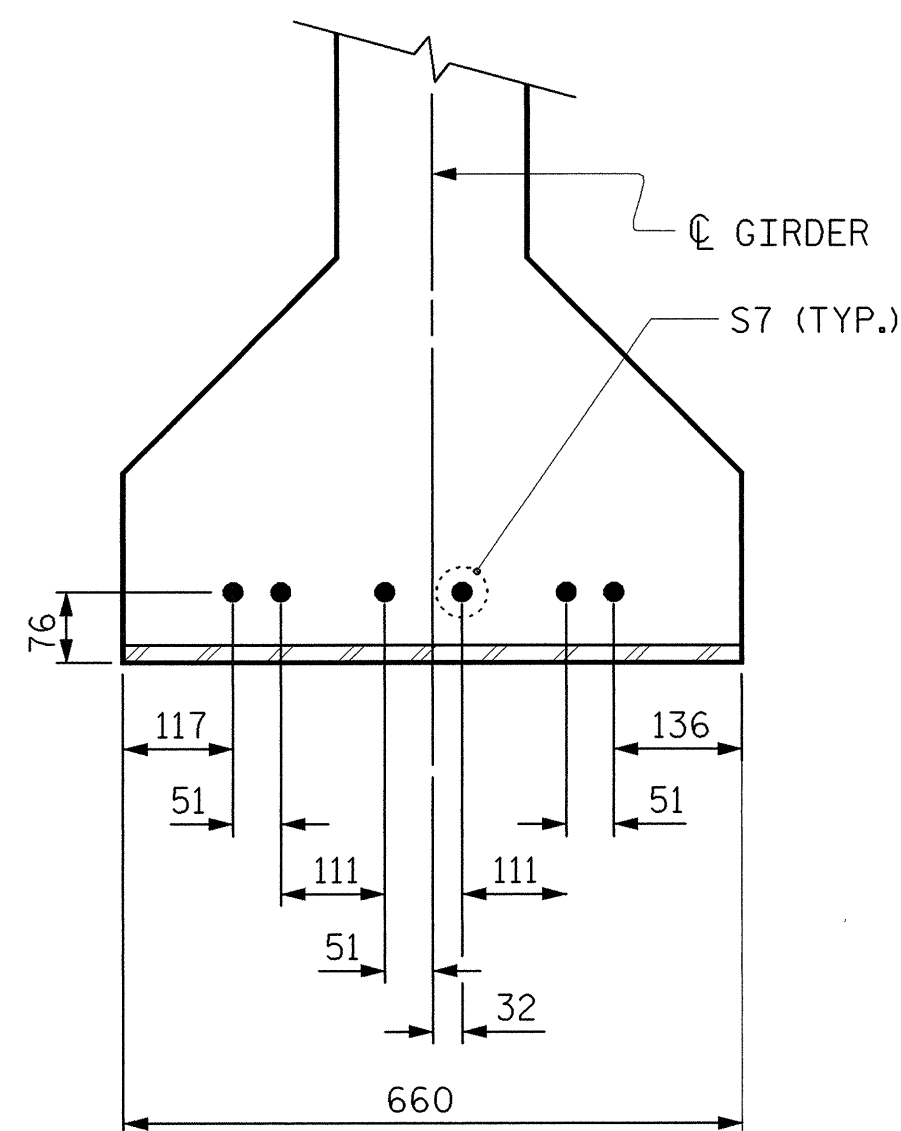
THE TOP SURFACE OF THE GIRDER, EXCLUDING THE OUTSIDE 100mm, SHALL BE RAKED TO A DEPTH OF 6mm.

WHEN DRAPED STRANDS ARE DETAILED, THE LONGITUDINAL LOCATION OF THE HOLD DOWN DEVICES SHALL BE WITHIN 150mm OF THE LOCATION SHOWN AND THE CENTER OF GRAVITY OF THE GROUP OF DRAPED STRANDS SHALL BE LOCATED WITHIN 13mm OF THE THEORETICAL LOCATION SHOWN.

A 50mm x 50mm CHAMFER IS ALLOWED AT THE INTERSECTION OF THE WEB AND THE BOTTOM FLANGE OF THE 1600mm AND 1829mm MODIFIED BULB TEES ONLY.

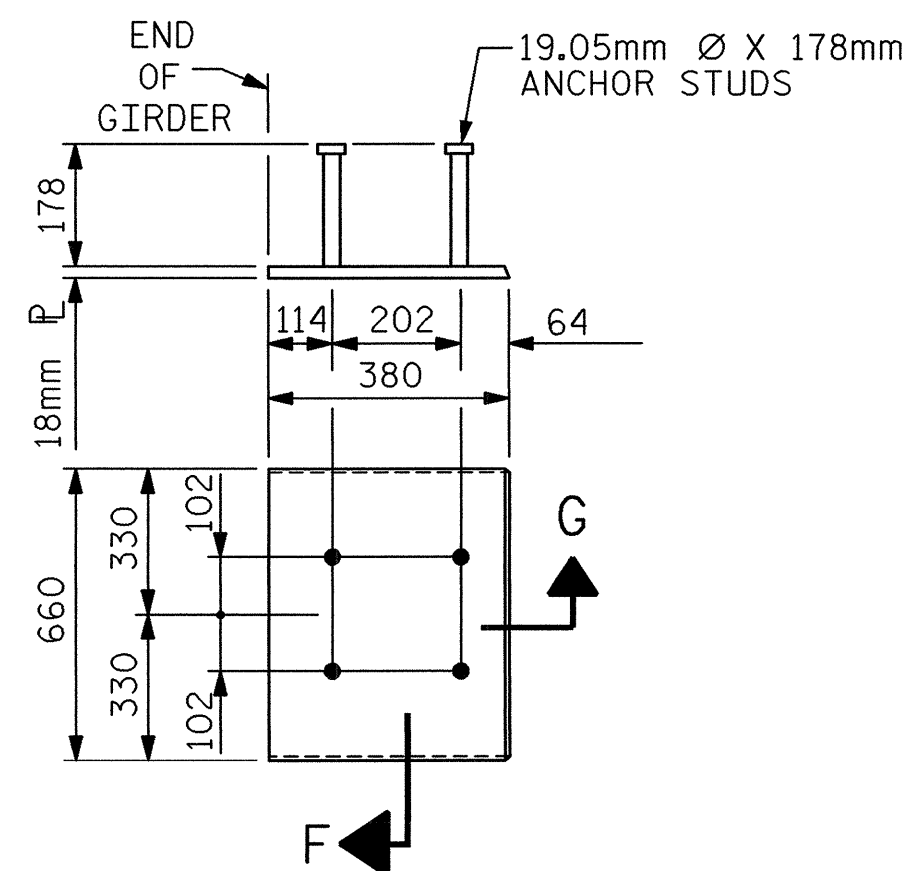
FOR VERTICAL CRACKS IN PRESTRESSED CONCRETE GIRDERS PRIOR TO DETENSIONING, SEE SPECIAL PROVISIONS.

FOR PRESTRESSED CONCRETE MEMBERS, SEE SPECIAL PROVISIONS.



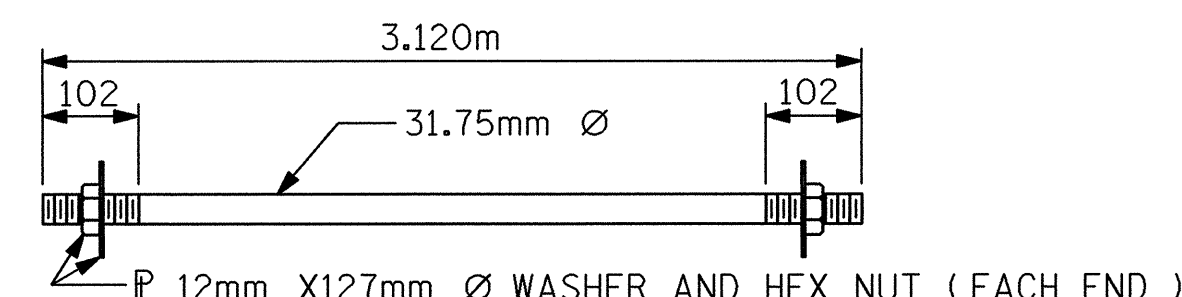
DETAIL "A"

(FOR AASHTO TYPE IV GIRDERS)



EMBEDDED PLATE "B-1" DETAILS FOR AASHTO TYPE IV GIRDER 1600mm & 1829mm MODIFIED BULB TEES

(2 REQ'D PER GIRDER)

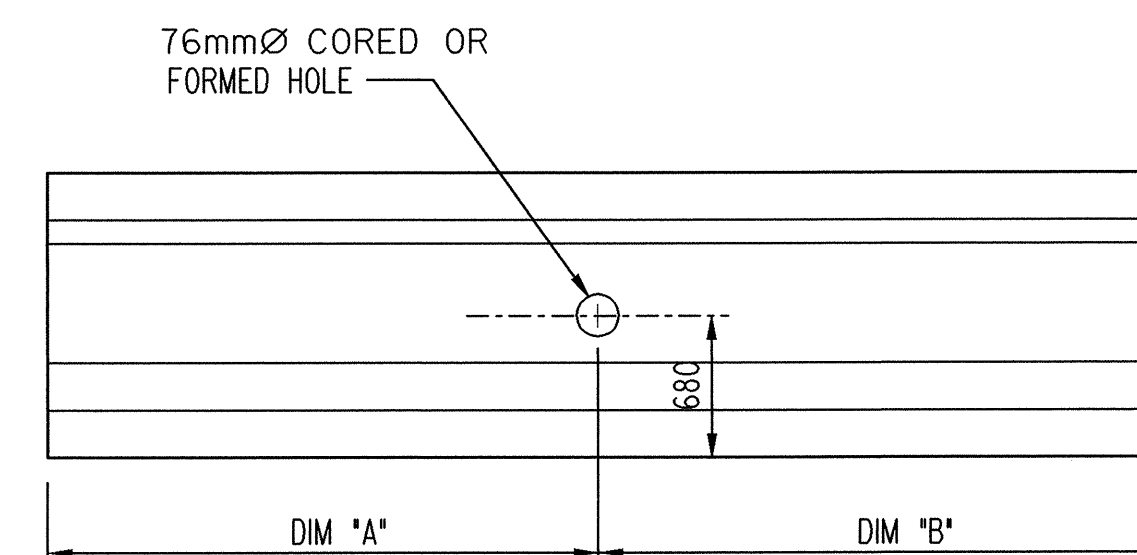


31.75mm Ø TIE ROD ASSEMBLY

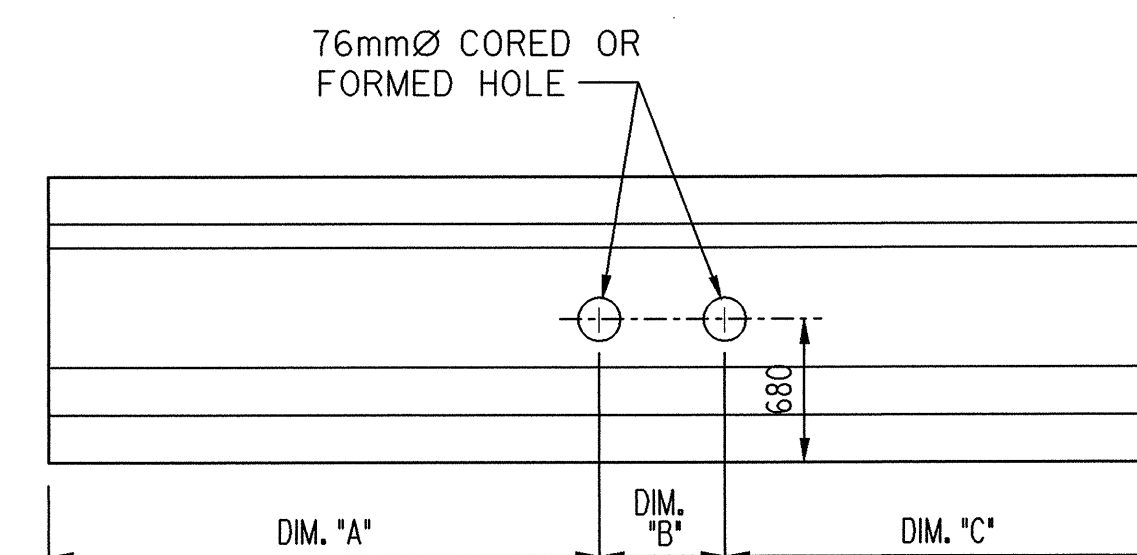
(44 COMPLETE ASSEMBLIES REQUIRED)

	EXTERIOR GIRDERS			INTERIOR GIRDERS				
	GIRDER	DIMENSION "A"	DIMENSION "B"	DIMENSION "C"	GIRDER	DIMENSION "A"	DIMENSION "B"	DIMENSION "C"
SPAN "A"	1	9.664m	8.236m	0	2	8.236m	1.427m	8.237m
	5	8.236m	9.664m	0	3	8.236m	1.427m	8.237m
SPAN "B"	1	13.139m	11.681m	0	2	11.681m	1.458m	11.681m
	5	11.681m	13.139m	0	3	11.681m	1.458m	11.681m
SPAN "C"	1	13.117m	11.623m	0	2	11.623m	1.493m	11.624m
	5	11.623m	13.117m	0	3	11.623m	1.493m	11.624m
SPAN "D"	1	13.175m	11.645m	0	2	11.645m	1.529m	11.646m
	5	11.645m	13.175m	0	3	11.645m	1.529m	11.646m
SPAN "E"	1	13.193m	11.627m	0	2	11.627m	1.566m	11.627m
	5	11.627m	13.193m	0	3	11.627m	1.566m	11.627m
SPAN "F"	1	13.171m	11.569m	0	2	11.569m	1.602m	11.569m
	5	11.569m	13.171m	0	3	11.569m	1.602m	11.569m
SPAN "G"	1	13.230m	11.590m	0	2	11.590m	1.639m	11.591m
	5	11.590m	13.230m	0	3	11.590m	1.639m	11.591m
SPAN "H"	1	13.248m	11.572m	0	2	11.572m	1.677m	11.571m
	5	11.572m	13.248m	0	3	11.572m	1.677m	11.571m
SPAN "I"	1	13.227m	11.513m	0	2	11.513m	1.715m	11.512m
	5	11.513m	13.227m	0	3	11.513m	1.715m	11.512m
SPAN "J"	1	9.784m	8.036m	0	2	8.036m	1.748m	8.036m
	5	8.036m	9.784m	0	3	8.036m	1.748m	8.036m
SPAN "K"	1	9.838m	8.062m	0	2	8.062m	1.776m	8.062m
	5	8.062m	9.838m	0	3	8.062m	1.776m	8.062m

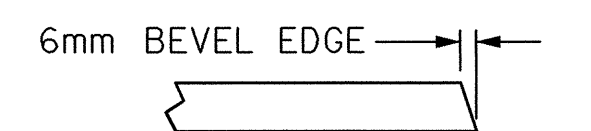
PLACEMENT OF TIE ROD HOLES



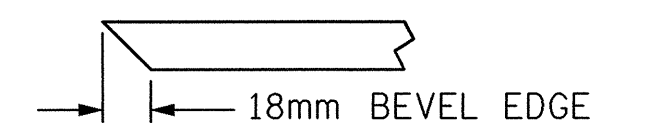
EXTERIOR GIRDERS



INTERIOR GIRDERS



SECTION "G"

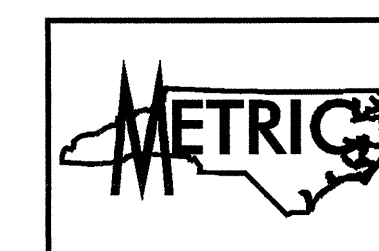


SECTION "F"

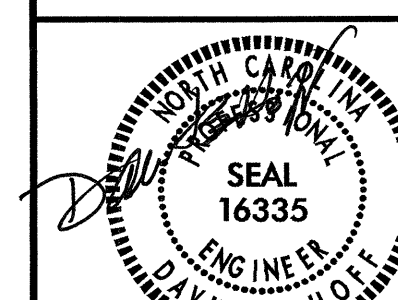
(SEE NOTES)

PROJECT NO. R-2552AB
JOHNSTON COUNTY
 STATION: 40+80.000 -L- P.O.C.

SHEET 5 OF 6



TRANSYSTEMS CORPORATION
 75 Beattie Place, Suite 400
 Greenville, SC 29601 (864) 234-0866



STATE OF NORTH CAROLINA
 DEPARTMENT OF TRANSPORTATION
 RALEIGH

STANDARD
 PRESTRESSED CONCRETE GIRDER
 CONTINUOUS FOR LIVE LOAD
 DETAILS
 (LEFT LANE)

REVISIONS			SHEET NO.		
NO.	BY:	DATE:	NO.	BY:	DATE:
1			3		
2			4		

TOTAL SHEETS: 429

ASSEMBLED BY : JCP	DATE : 7/01
CHECKED BY : DBH	DATE : 7/01
DRAWN BY : ELR 11/91	REV. 7/17/98 RWW/LES
CHECKED BY : GRP 11/91	REV. 8/16/99 MAB/LES
	REV. 10/17/00 RWW/LES

\$FILE\$
 \$DATE\$
 \$TIME\$