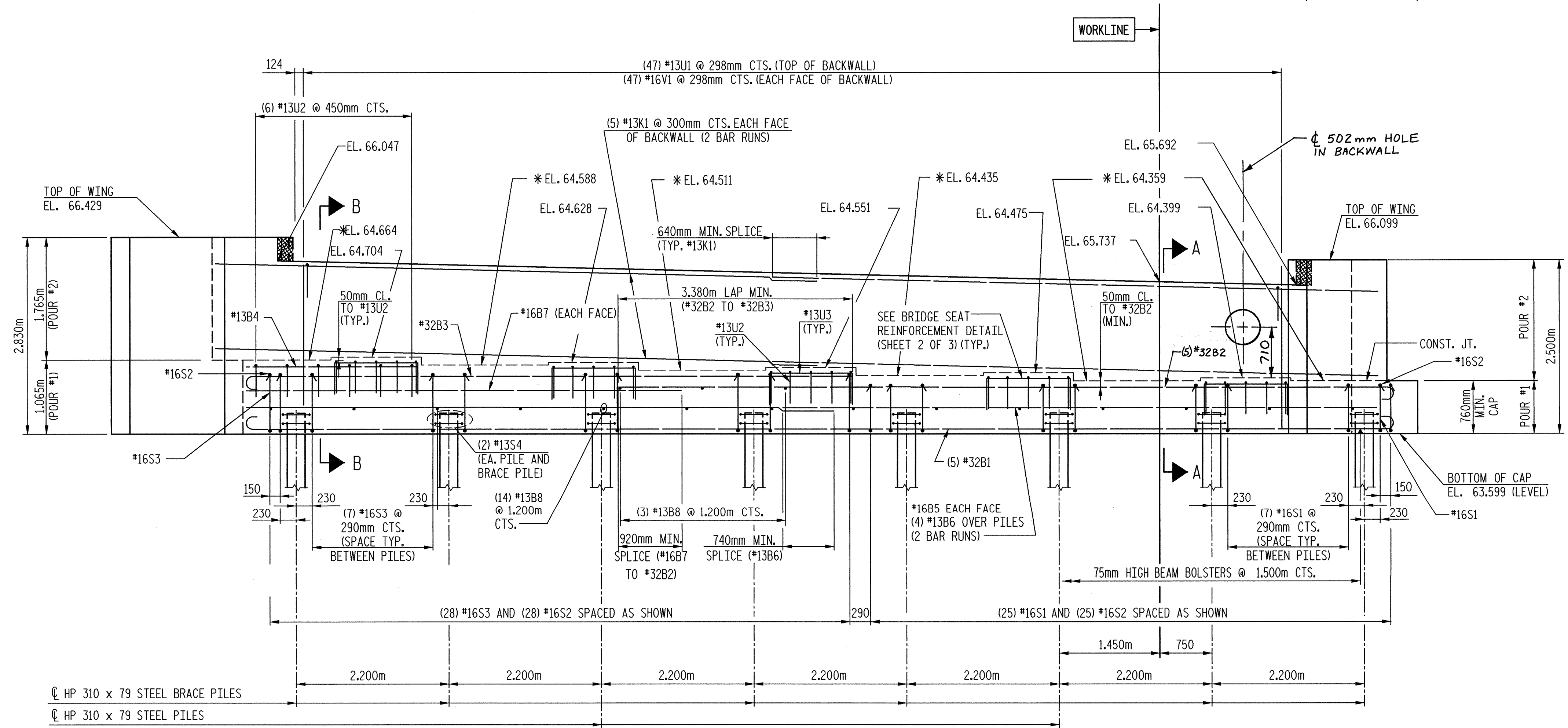
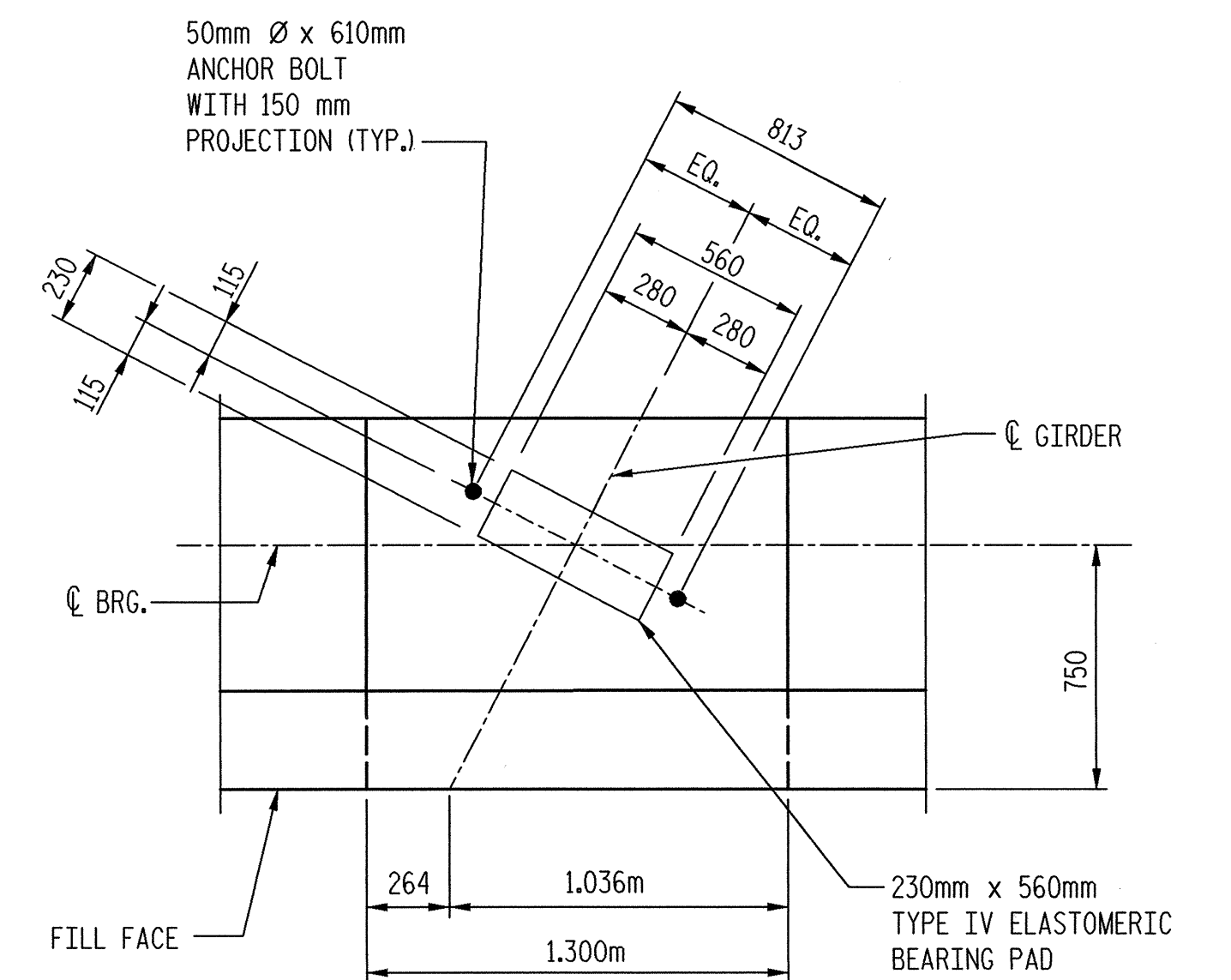
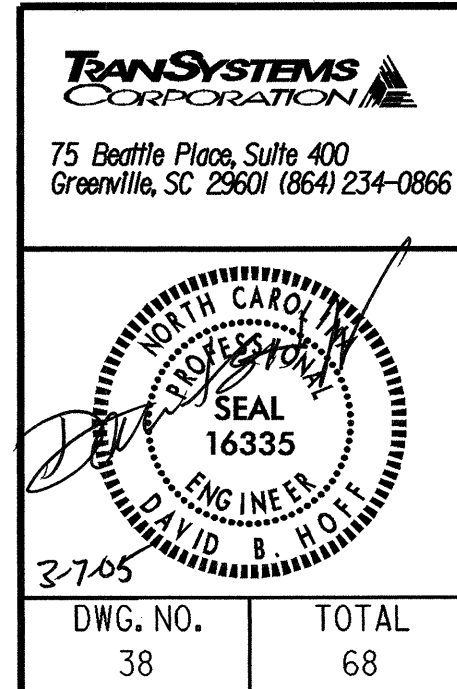


- NOTES
1. STIRRUPS AND "U" BARS IN THE CAP MAY BE SHIFTED SLIGHTLY AS NECESSARY TO CLEAR ANCHOR BOLTS.
  2. FOR PILE SPLICE DETAILS, SEE SHEET 3 OF 3.
  3. FOR EPOXY PROTECTIVE COATING, SEE SPECIAL PROVISIONS.
  4. THE CONTRACTOR SHALL PROVIDE FOR INSTALLATION OF THE 102MM DIAMETER DRAIN PIPE THROUGH THE WIND WALL AS REQUIRED FOR REINFORCING STEEL IN THE WING WALL MAY BE SHIFTED AS NECESSARY TO CLEAR THE DRAIN PIPE.
  5. BACKWALL SHALL BE PLACED BEFORE APPLYING THE EPOXY PROTECTIVE COATING.
  6. THE TOP SURFACE AREAS OF THE END BENT CAP SHALL BE CURED IN ACCORDANCE WITH THE STANDARD SPECIFICATIONS EXCEPT THAT THE MEMBRANE CURING COMPOUND METHOD SHALL NOT BE USED.
  7. THE TOP SURFACE OF THE END BENT CAP EXCEPT THE BRIDGE SEAT BUILDUPS SHALL BE SLOPED TRANSVERSLY FROM THE FILL FACE TO THE BACK FACE AT A RATE OF 2%.
  8. REINFORCING STEEL MAY BE CUT AND BENT AS NECESSARY TO CLEAR 502mm Ø HOLE IN BACKWALL.
  9. FOR DETAILS OF THE 502mm Ø HOLE, SEE SUPERSTRUCTURE CLOSED DRAINAGE SYSTEM DETAILS.



DRAWN BY: M.L. MARLEY DATE: 1/11/02  
 CHECKED BY: D.B. HOFF DATE: 12/25/00

PROJECT NO. R-2552AB  
 JOHNSTON COUNTY  
 STATION: 40+80.000 -L- P.O.C.  
 SHEET 1 OF 3



STATE OF NORTH CAROLINA  
 DEPARTMENT OF TRANSPORTATION  
 RALEIGH

SUBSTRUCTURE  
 END BENT #1  
 PLAN AND ELEVATION  
 (LEFT LANE)

REVISIONS						SHEET NO.	
NO.	BY:	DATE:	NO.	BY:	DATE:	S-297	
1			3			TOTAL SHEETS	
2			4			429	

g:\04\0125\B-rdgs\Steel\Left (WBL)\Final\Endbent1(wb1).dgn  
 3/7/2005  
 10:49:36 AM