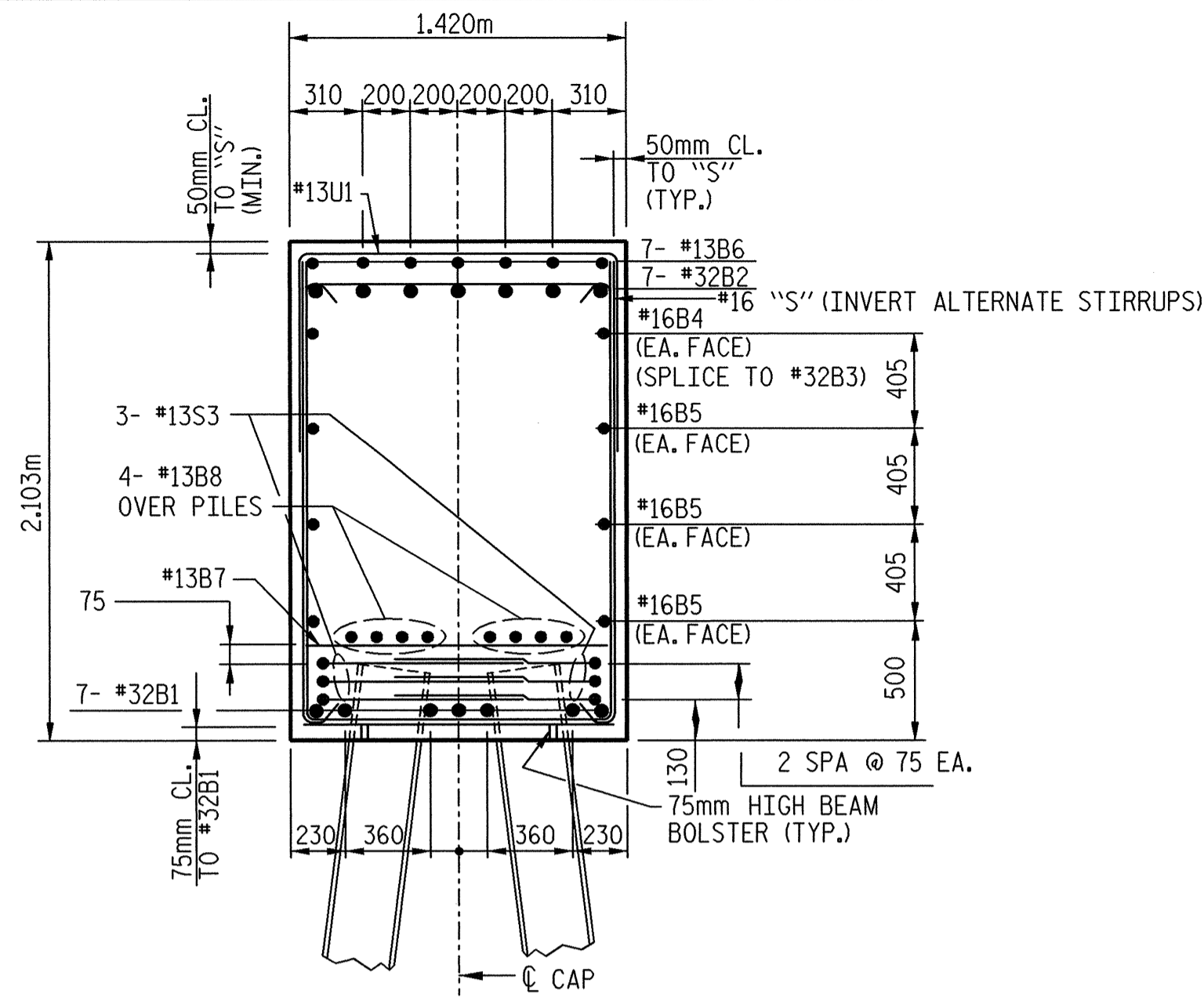
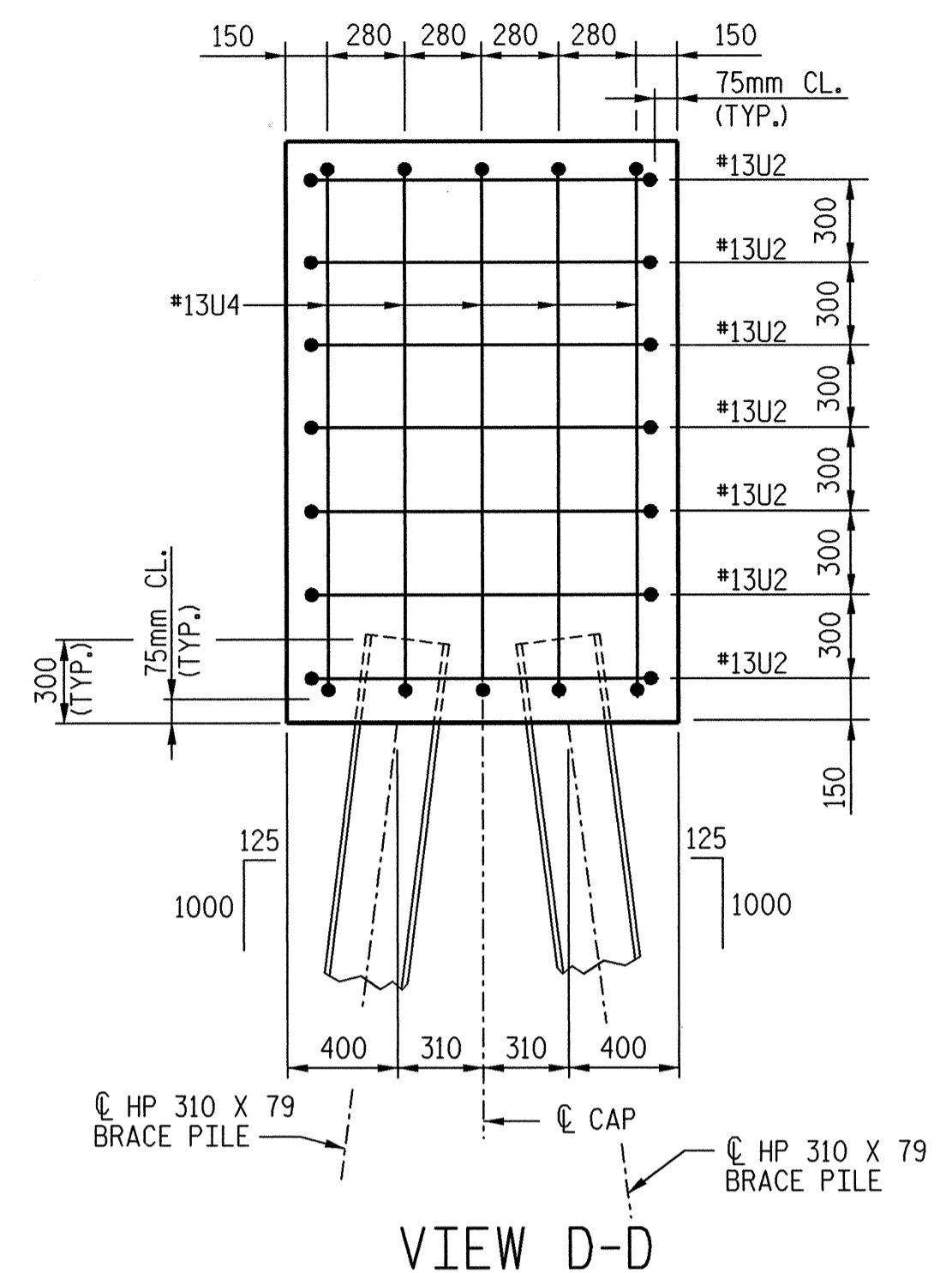


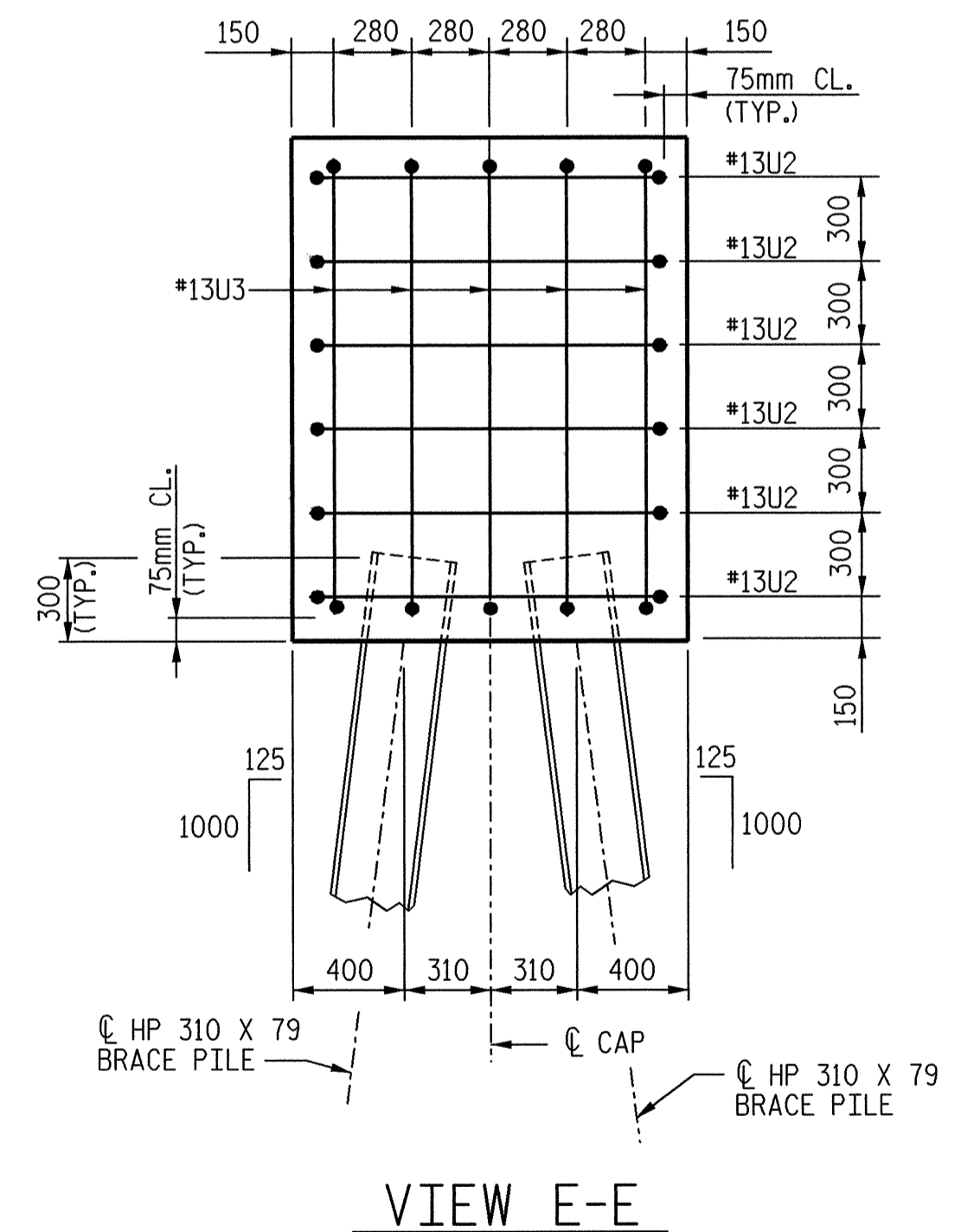
SECTION A-A



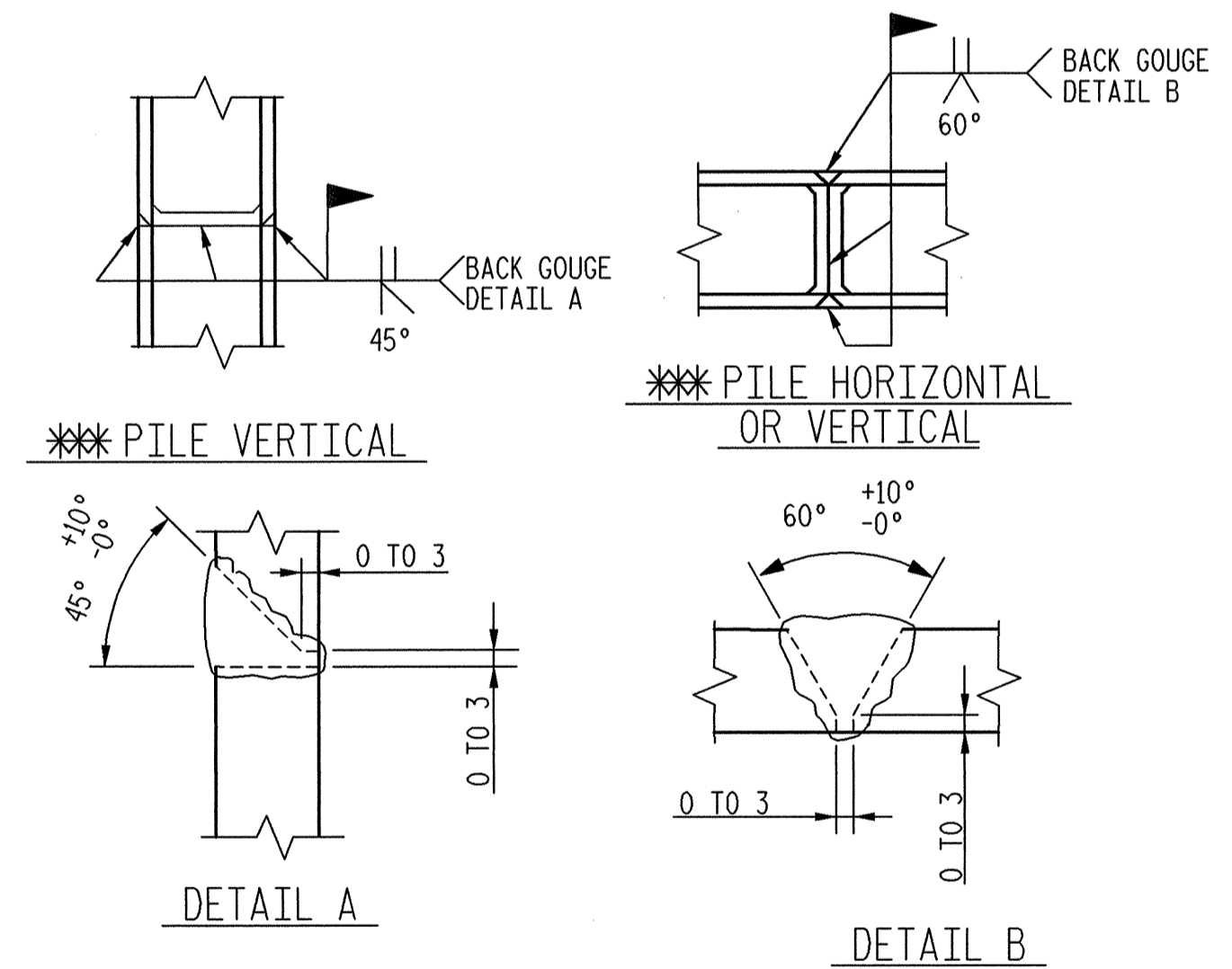
SECTION B-B



VIEW D-D



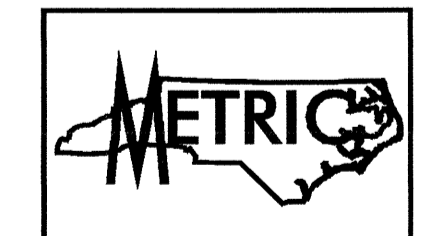
VIEW E-E



PILE SPLICE DETAILS

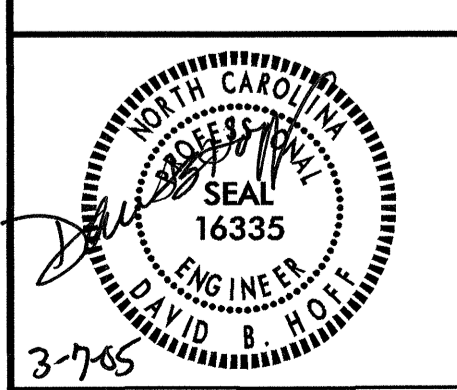
BAR TYPES		BILL OF MATERIALS				
ALL BAR DIMENSIONS ARE OUT TO OUT.		BENT #1				
B1	7	#32	STR	14600	654	
B2	7	#32	1	8580	385	
B3	7	#32	1	9300	417	
B4	2	#16	STR.	6660	21	
B5	6	#16	STR.	14600	136	
B6	7	#13	STR.	1840	13	
B7	14	#13	STR.	1320	18	
B8	16	#13	STR.	7680	122	
S1	26	#16	2	5280	213	
S2	20	#16	2	4980	155	
S3	42	#13	3	2240	94	
U1	47	#13	3	2320	108	
U2	13	#13	3	2180	28	
U3	5	#13	3	2560	13	
U4	5	#13	3	2860	14	
BENT #1 TOTAL QUANTITIES						
HP310 x 79 PILES No: 14				182.7 m		
GALVANIZING STEEL PILES				LUMP SUM		
REINFORCING STEEL				2391 kg.		
CLASS "A" CONCRETE				40.4 m ³		

REVISIONS		SHEET NO.			
NO.	BY:	DATE:	NO.	BY:	DATE:
1			3		
2			4		



PROJECT NO. R-2552AB
 JOHNSTON COUNTY
 STATION: 40+80.00 -L- P.O.C.
 SHEET 2 OF 2

TRANSYSTEMS CORPORATION
 75 Beattie Place, Suite 400
 Greenville, SC 29601 (864) 234-0866



STATE OF NORTH CAROLINA
 DEPARTMENT OF TRANSPORTATION
 RALEIGH
 SUBSTRUCTURE
 BENT #1
 DETAILS
 (LEFT LANE)

DRAWN BY: J. C. PENDERGRAFT DATE: 8/01
 CHECKED BY: D.B. HOFF DATE: 2/02

DWG. NO. 42 TOTAL 68

TOTAL SHEETS 429

\$FILES\$
 \$DATES\$
 \$TIMES\$