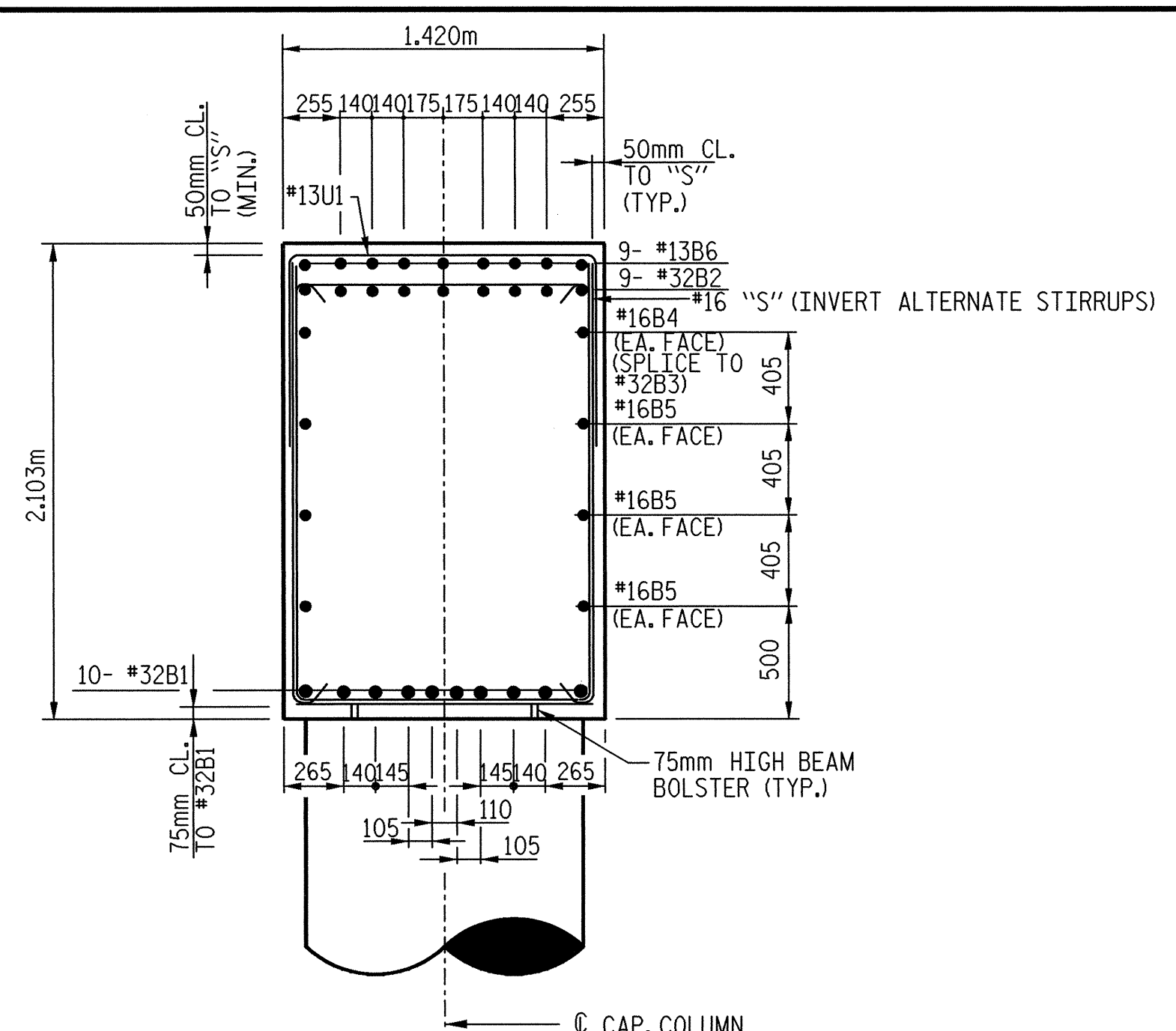
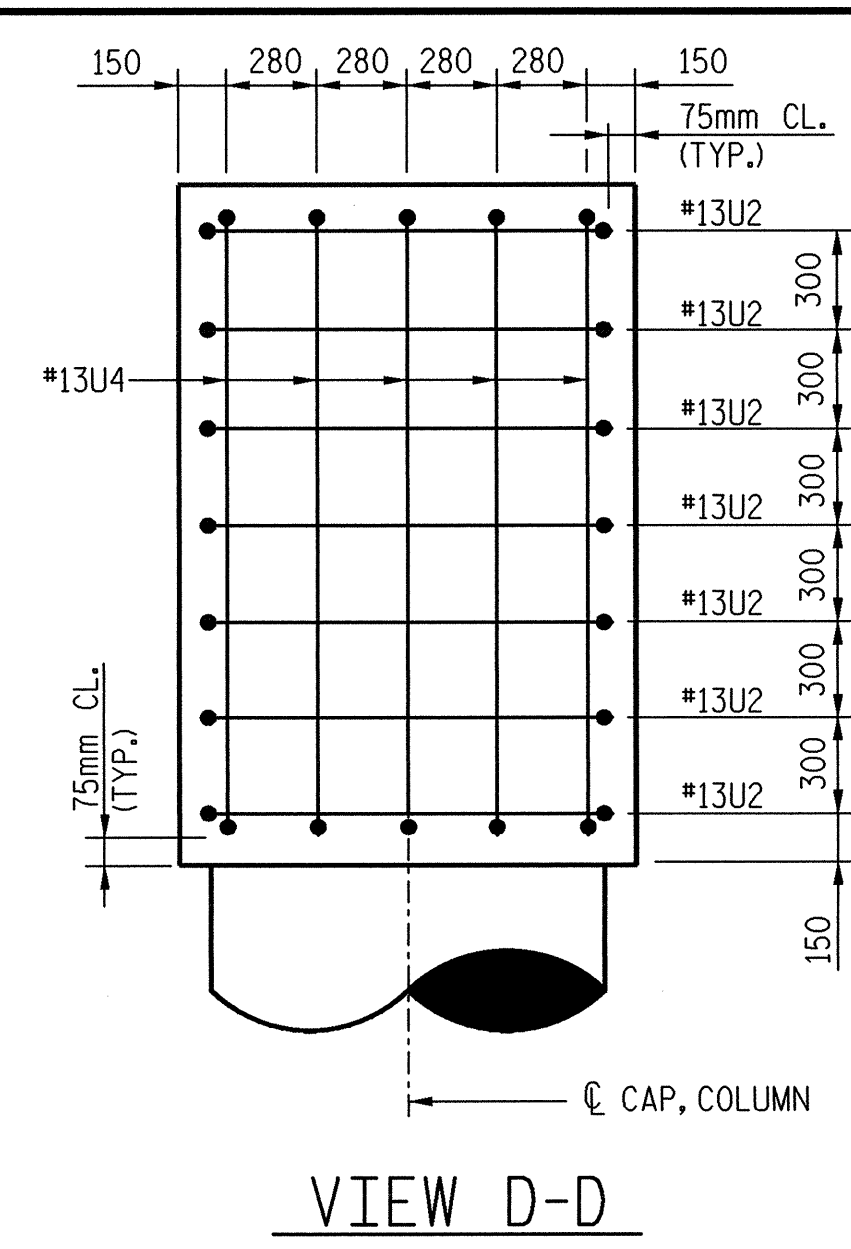


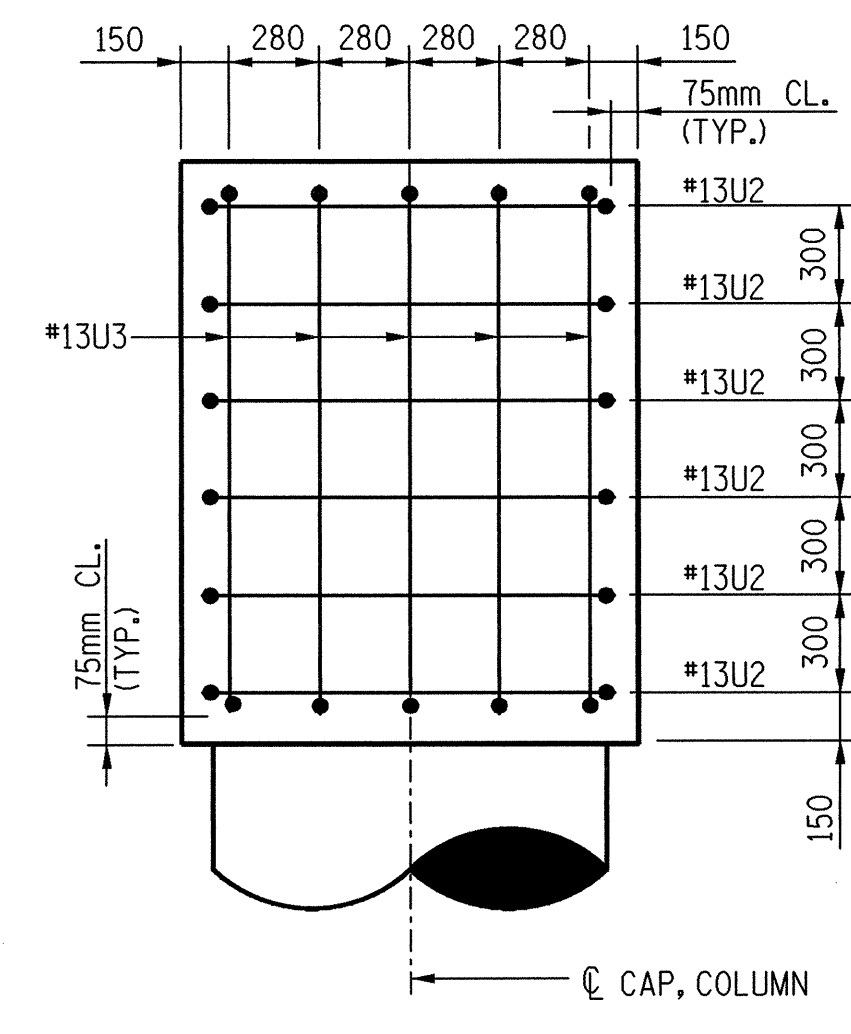
SECTION A-A



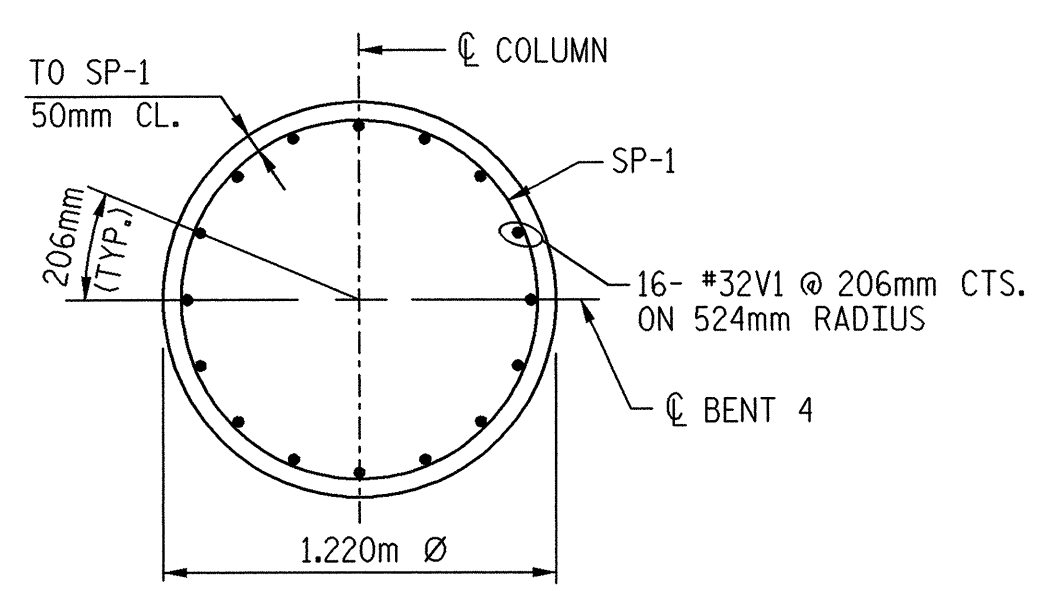
SECTION B-B



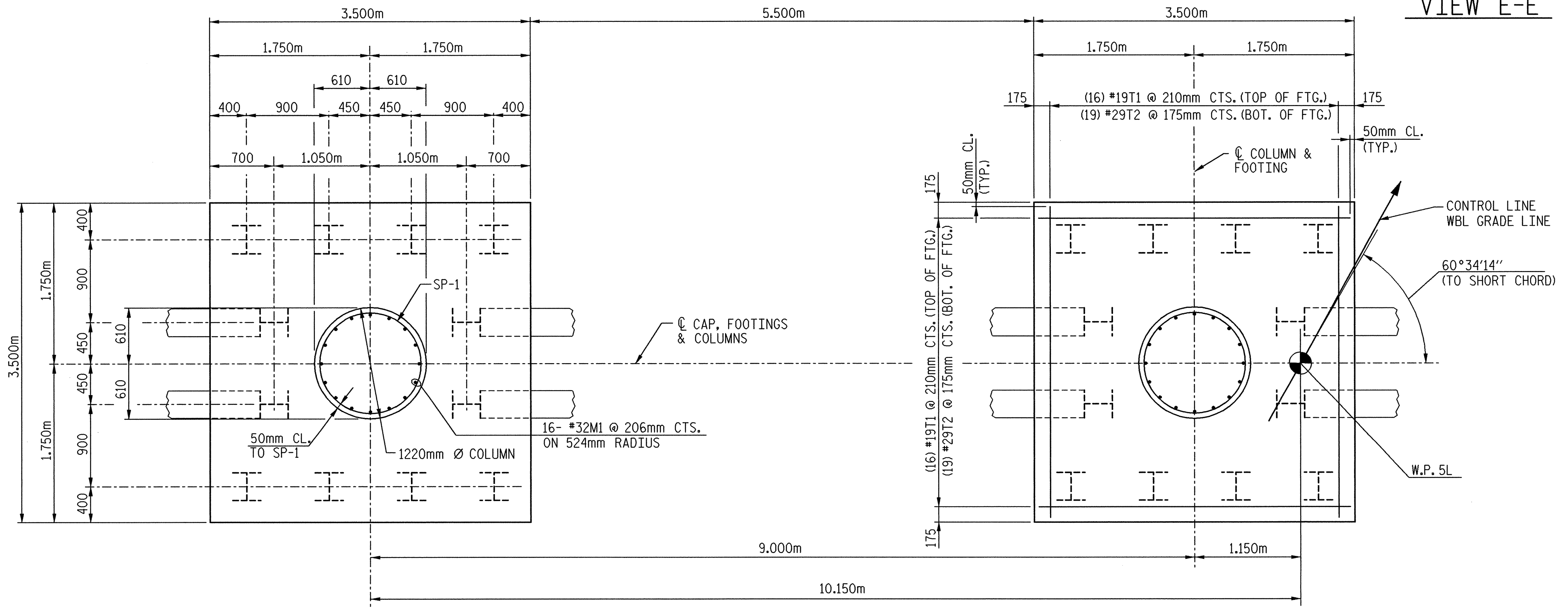
VIEW D-D



VIEW E-E

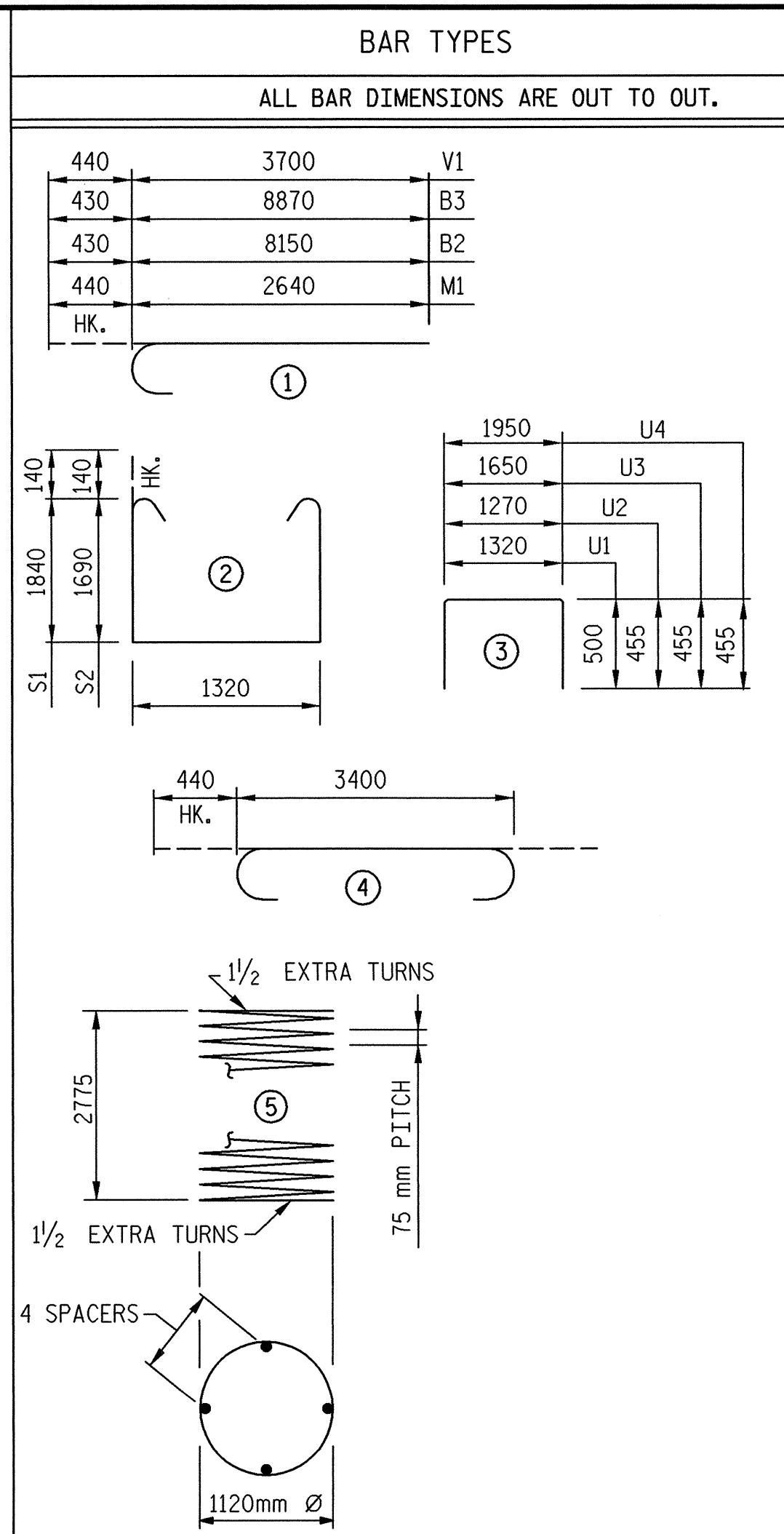


SECTION C-C



FOOTING PLAN

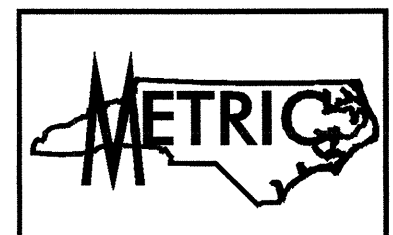
DETAILS SHOWN ARE TYPICAL FOR ALL FOOTINGS & COLUMNS UNLESS OTHERWISE NOTED



* THE SP-1 SPIRAL REINFORCING STEEL SHALL BE W20 OR D-20 COLD DRAWN WIRE OR #13 PLAIN OR DEFORMED BAR.

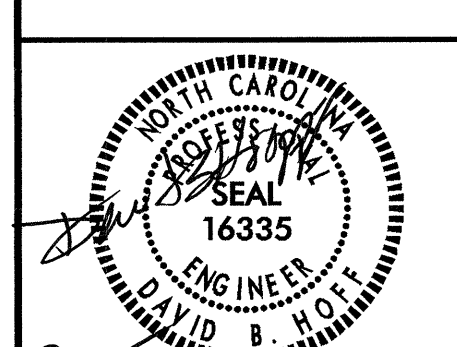
BAR TYPES				BILL OF MATERIALS			
ALL BAR DIMENSIONS ARE OUT TO OUT.				BENT #4			
BAR	NO.	SIZE	TYPE	LENGTH	WEIGHT		
440	3700	V1		14600	935		
430	8870	B3		8580	495		
430	8150	B2		9300	536		
440	2640	M1		6660	21		
B5	6	#16	STR.	14600	136		
B6	9	#13	STR.	1840	16		
M1	32	#32		3080	631		
S1	31	#16		5280	254		
S2	26	#16		4980	201		
T1	32	#19	STR.	3400	243		
T2	38	#29		4280	823		
U1	47	#13		2320	108		
U2	13	#13		2180	28		
U3	5	#13		2560	13		
U4	5	#13		2860	14		
V1	32	#32		4140	848		
SPIRAL COLUMN REINFORCING STEEL							
SP-1	2	*	5	139160	277		
BENT #4 TOTAL QUANTITIES							
HP310 x 79 PILES No: 24				216.0 m			
GALVANIZING STEEL PILES				LUMP SUM			
REINFORCING STEEL				5302 kg.			
SPIRAL COLUMN REINFORCING STEEL				277g.			
CLASS "A" CONCRETE BREAKDOWN BY POUR							
POUR 1 (FOOTINGS)				27.0 m ³			
POUR 2 (COLUMNS)				6.3 m ³			
POUR 3 (CAPS)				40.4 m ³			
TOTAL CLASS "A" CONCRETE				73.7 m ³			

* THE SP-1 SPIRAL REINFORCING STEEL SHALL BE W20 OR D-20 COLD DRAWN WIRE OR #13 PLAIN OR DEFORMED BAR.



PROJECT NO. R-2552AB
 JOHNSTON COUNTY
 STATION: 40+80.00 -L- P.O.C.
 SHEET 2 OF 2

TRANSYSTEMS CORPORATION
 75 Beattie Place, Suite 400
 Greenville, SC 29601 (864) 234-0866



STATE OF NORTH CAROLINA
 DEPARTMENT OF TRANSPORTATION
 RALEIGH
 SUBSTRUCTURE
 BENT #4
 DETAILS
 (LEFT LANE)

REVISIONS						SHEET NO.	
NO.	BY:	DATE:	NO.	BY:	DATE:		
1			3			5-307	
2			4			TOTAL SHEETS 429	

DWG. NO.	TOTAL
48	68

DRAWN BY: J. C. PENDERGRAFT DATE: 8/01
 CHECKED BY: D. B. HOFF DATE: 2/02

\$FILES\$
 \$DATE\$
 \$TIME\$