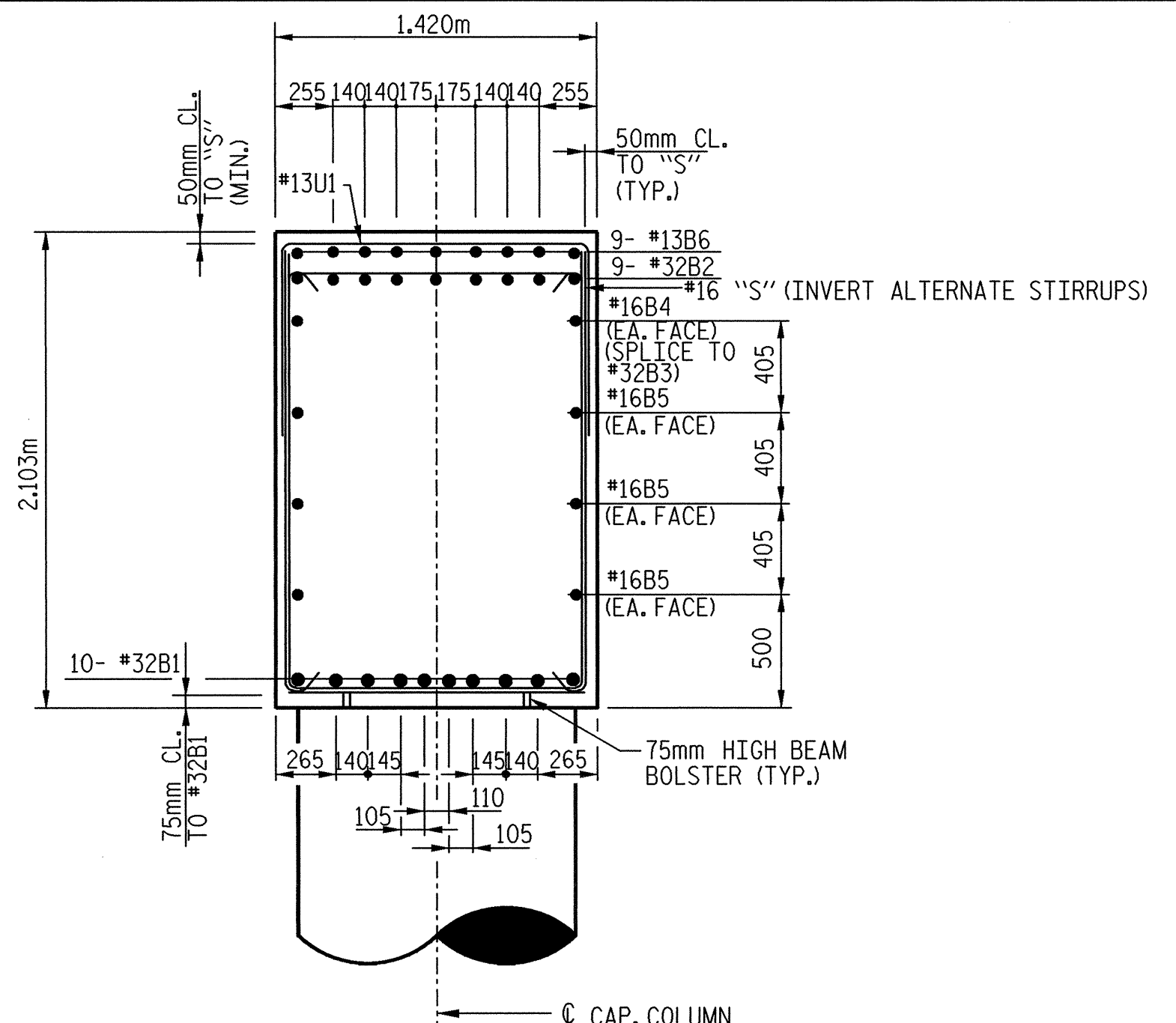
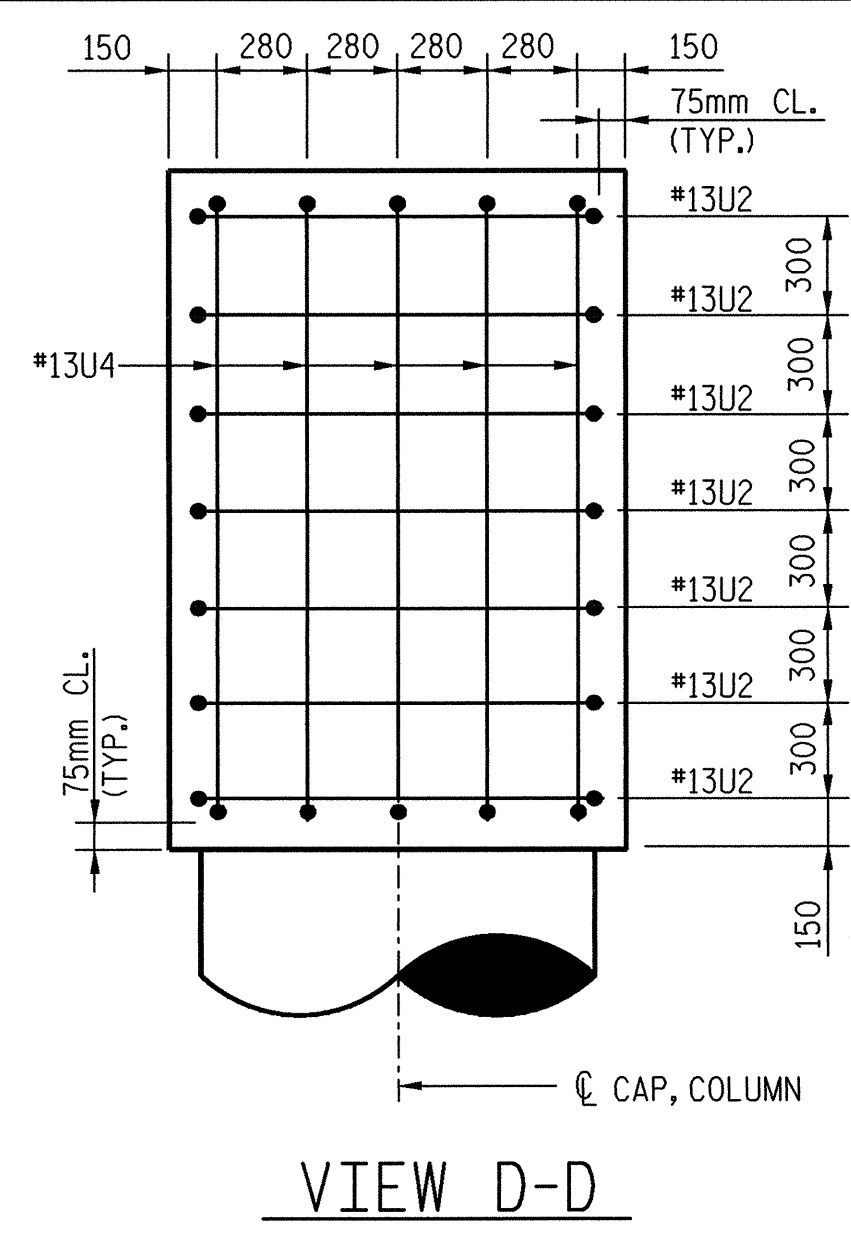


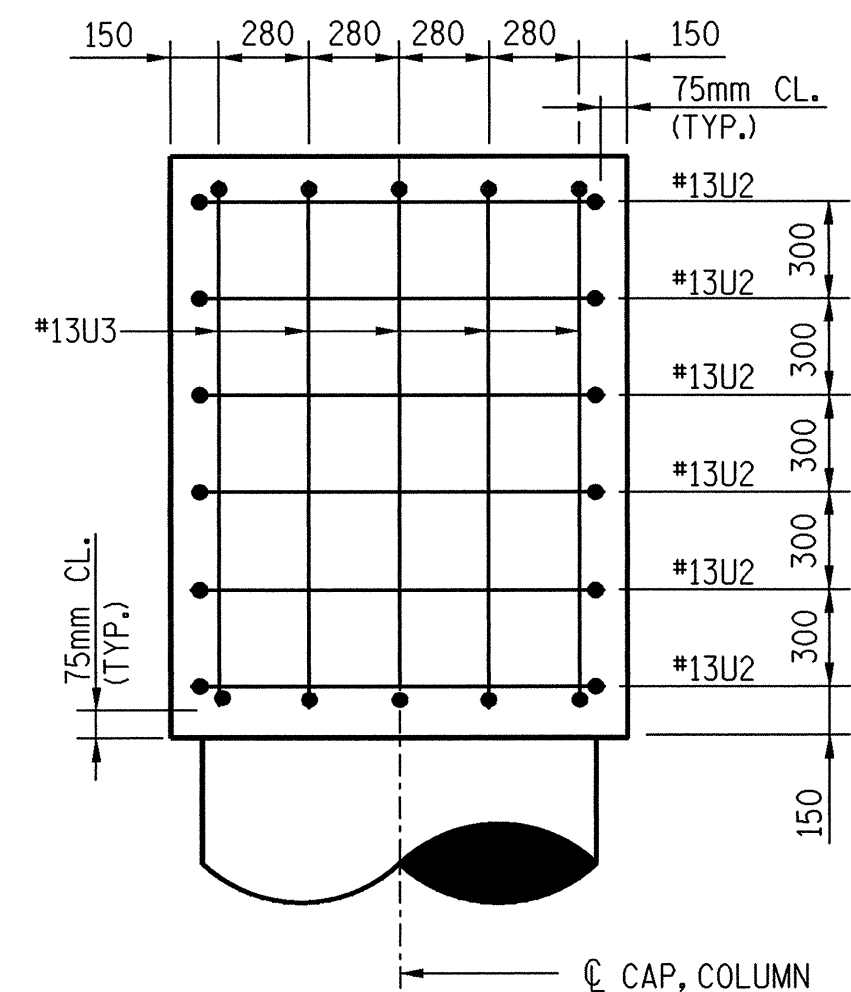
SECTION A-A



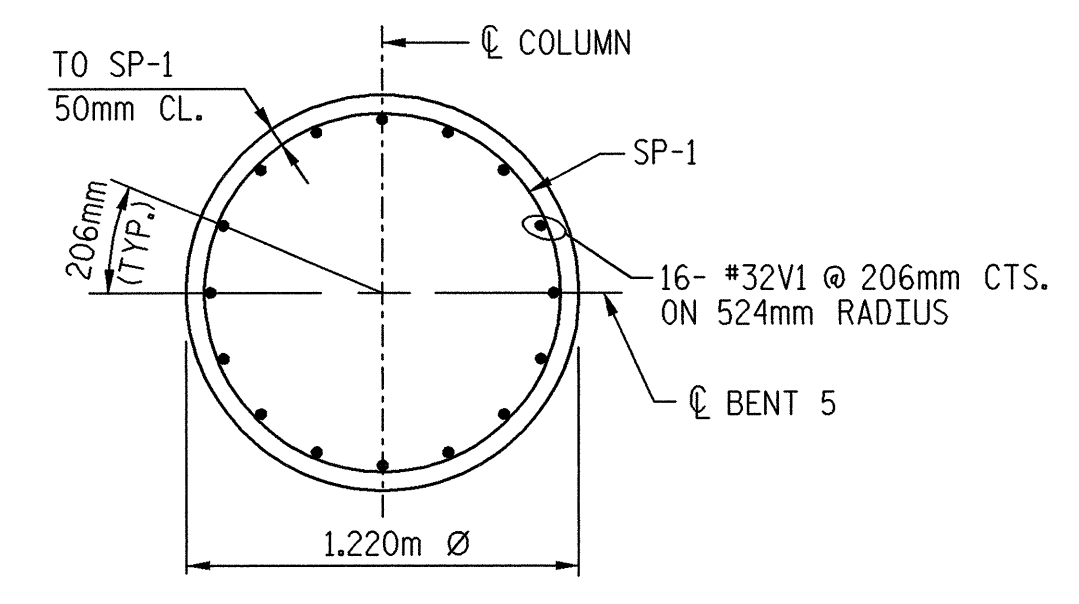
SECTION B-B



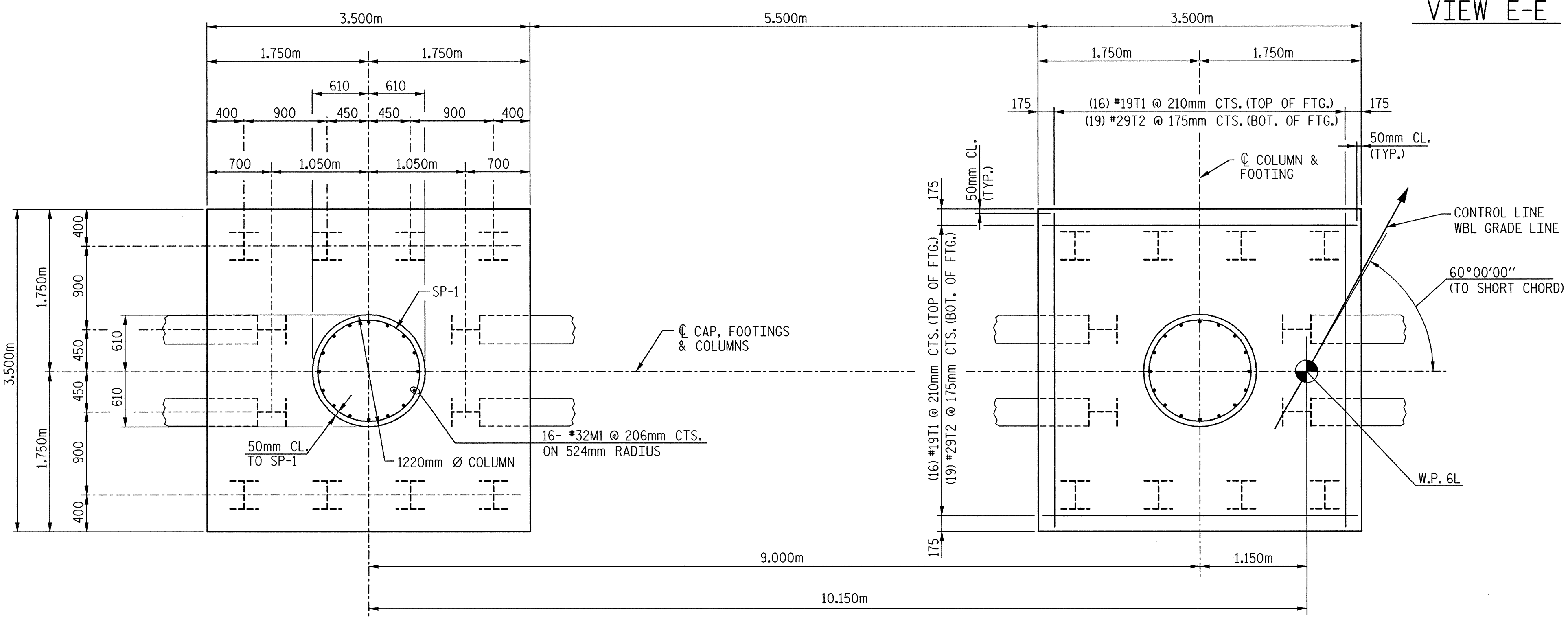
VIEW D-D



VIEW E-E

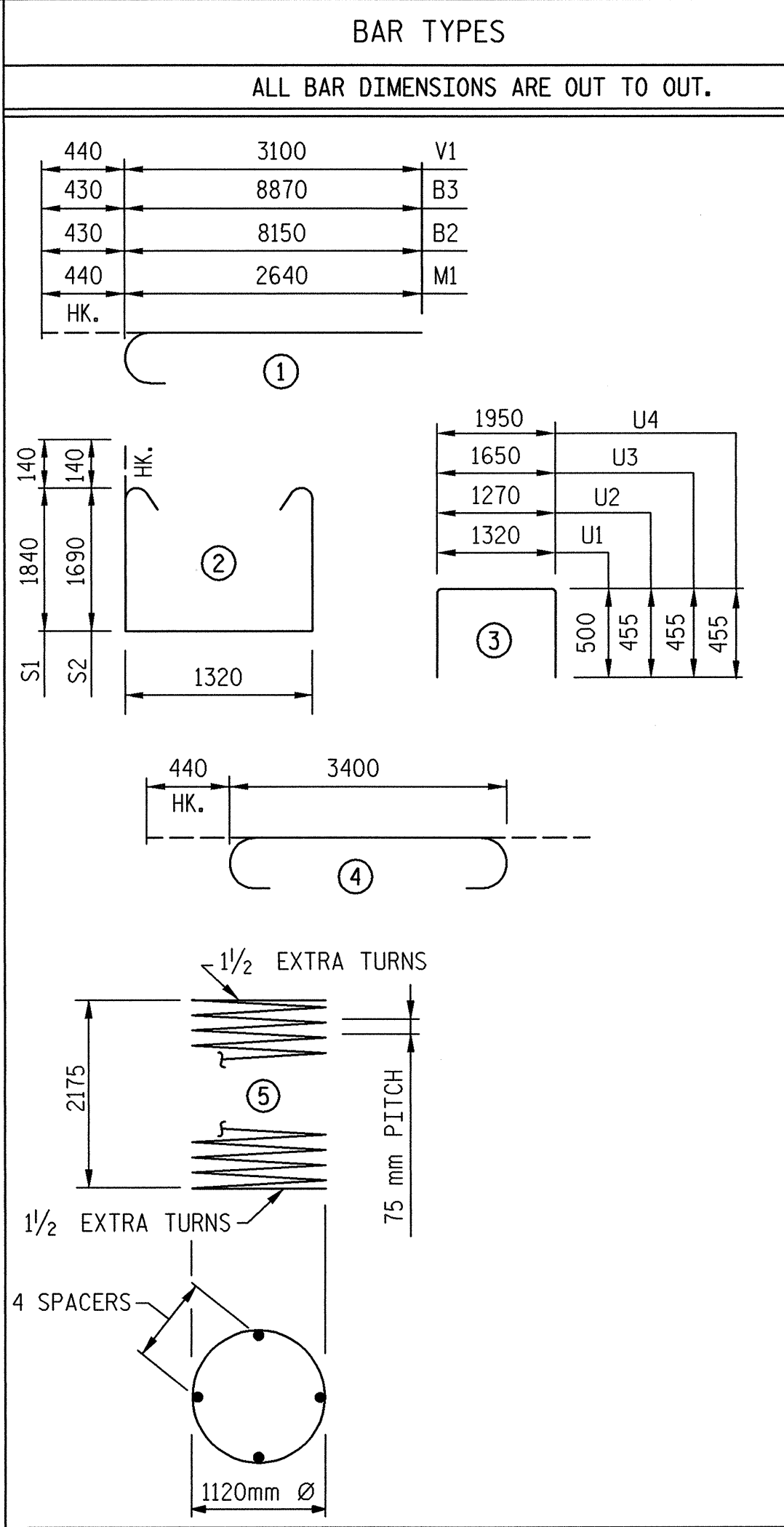


SECTION C-C



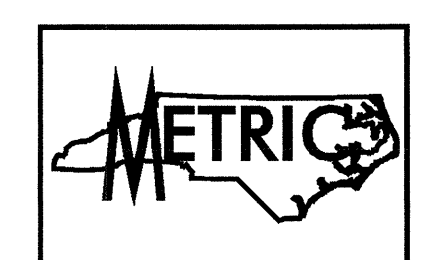
FOOTING PLAN

DETAILS SHOWN ARE TYPICAL FOR ALL FOOTINGS & COLUMNS UNLESS OTHERWISE NOTED



BAR TYPES		BILL OF MATERIALS	
ALL BAR DIMENSIONS ARE OUT TO OUT.			
440	3100	V1	
430	8870	B3	
430	8150	B2	
440	2640	M1	
BENT #5			
BAR NO.	SIZE	TYPE	LENGTH/WEIGHT
B1	#32	STR.	14600 935
B2	#32	1	8580 495
B3	#32	1	9300 536
B4	#16	STR.	6660 21
B5	#16	STR.	14600 136
B6	#13	STR.	1840 16
M1	#32	1	3080 631
S1	#16	2	5280 254
S2	#16	2	4980 201
T1	#19	STR.	3400 243
T2	#29	4	4280 823
U1	#13	3	2320 108
U2	#13	3	2180 28
U3	#13	3	2560 13
U4	#13	3	2860 14
V1	#32	1	3540 725
SPIRAL COLUMN REINFORCING STEEL			
SP-1	2	*	111320 221
BENT #5 TOTAL QUANTITIES			
HP310 x 79 PILES	No: 24		198.0 m
GALVANIZING STEEL PILES			LUMP SUM
REINFORCING STEEL			5179 Kg.
SPIRAL COLUMN REINFORCING STEEL			221 Kg.
CLASS "A" CONCRETE BREAKDOWN BY POUR			
POUR 1 (FOOTINGS)			27.0 m <sup>3</sup>
POUR 2 (COLUMNS)			4.9 m <sup>3</sup>
POUR 3 (CAPS)			40.4 m <sup>3</sup>
TOTAL CLASS "A" CONCRETE			72.3 m <sup>3</sup>

\* THE SP-1 SPIRAL REINFORCING STEEL SHALL BE W20 OR D-20 COLD DRAWN WIRE OR #13 PLAIN OR DEFORMED BAR.



PROJECT NO. R-2552AB  
 JOHNSTON COUNTY  
 STATION: 40+80.00 -L- P.O.C.  
 SHEET 2 OF 2

TRANSYSTEMS CORPORATION  
 75 Beattie Place, Suite 400  
 Greenville, SC 29601 (864) 234-0866

STATE OF NORTH CAROLINA  
 DEPARTMENT OF TRANSPORTATION  
 RALEIGH

SUBSTRUCTURE  
 BENT #5  
 DETAILS  
 (LEFT LANE)

REVISIONS

NO.	BY:	DATE:	NO.	BY:	DATE:
1			3		
2			4		

SHEET NO. S-309  
 TOTAL SHEETS 429

DRAWN BY: J. C. PENDERGRAFT DATE: 8/01  
 CHECKED BY: D. B. HOFF DATE: 2/02