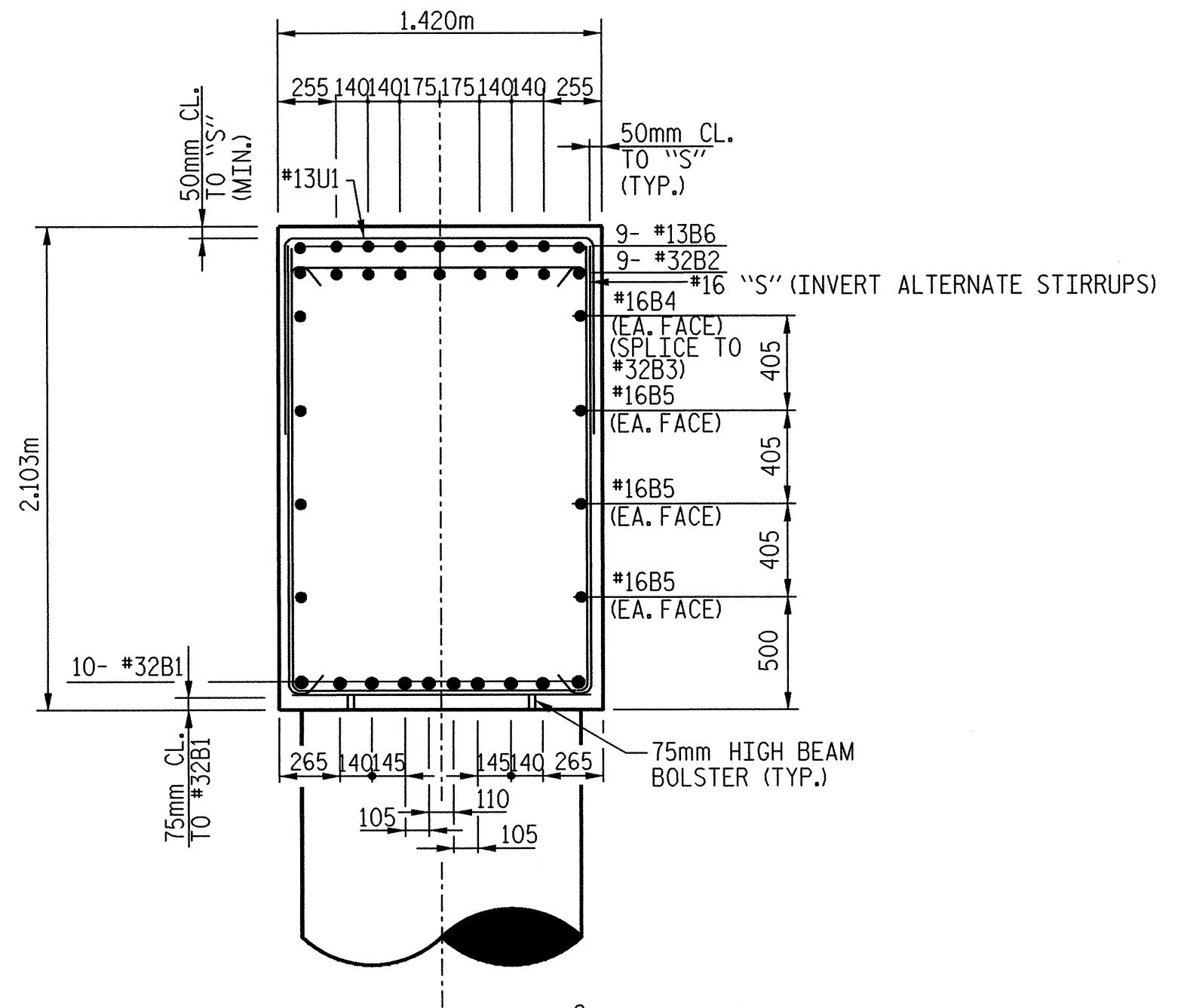
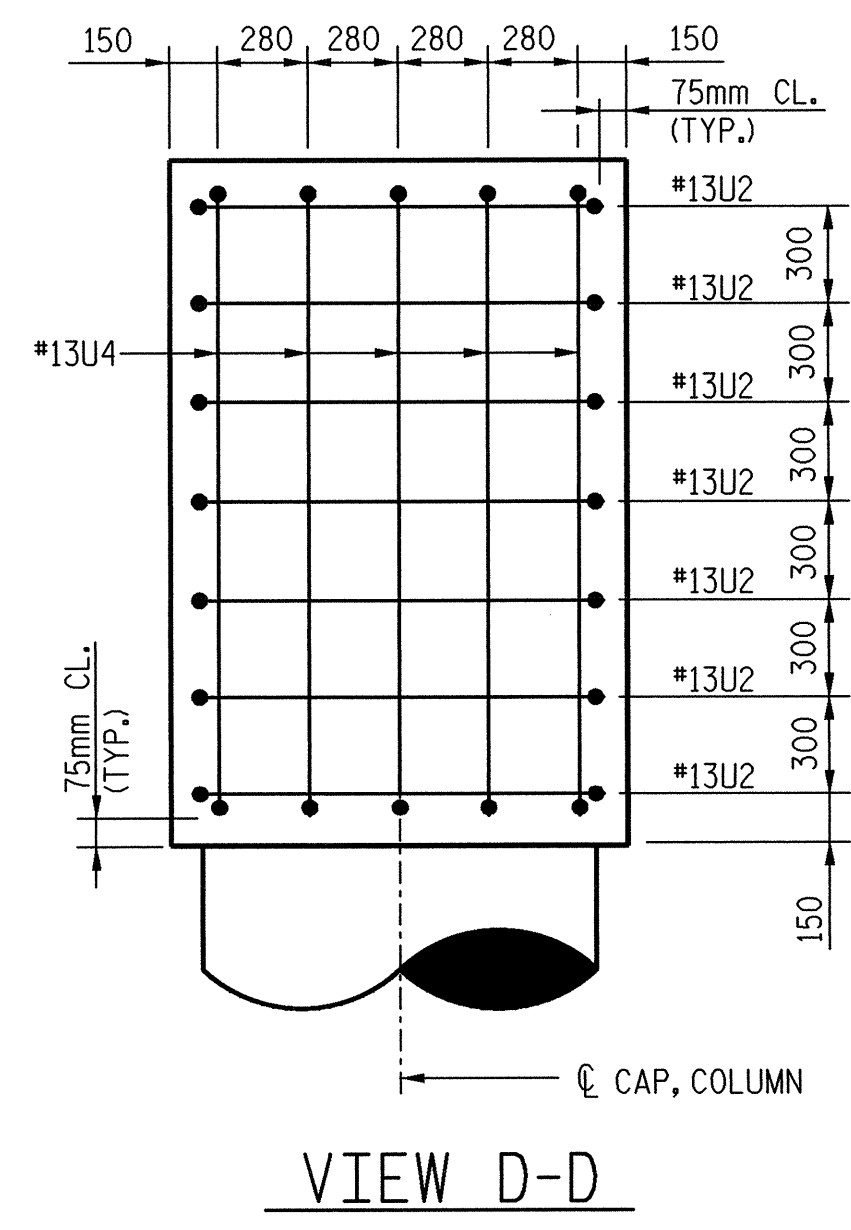


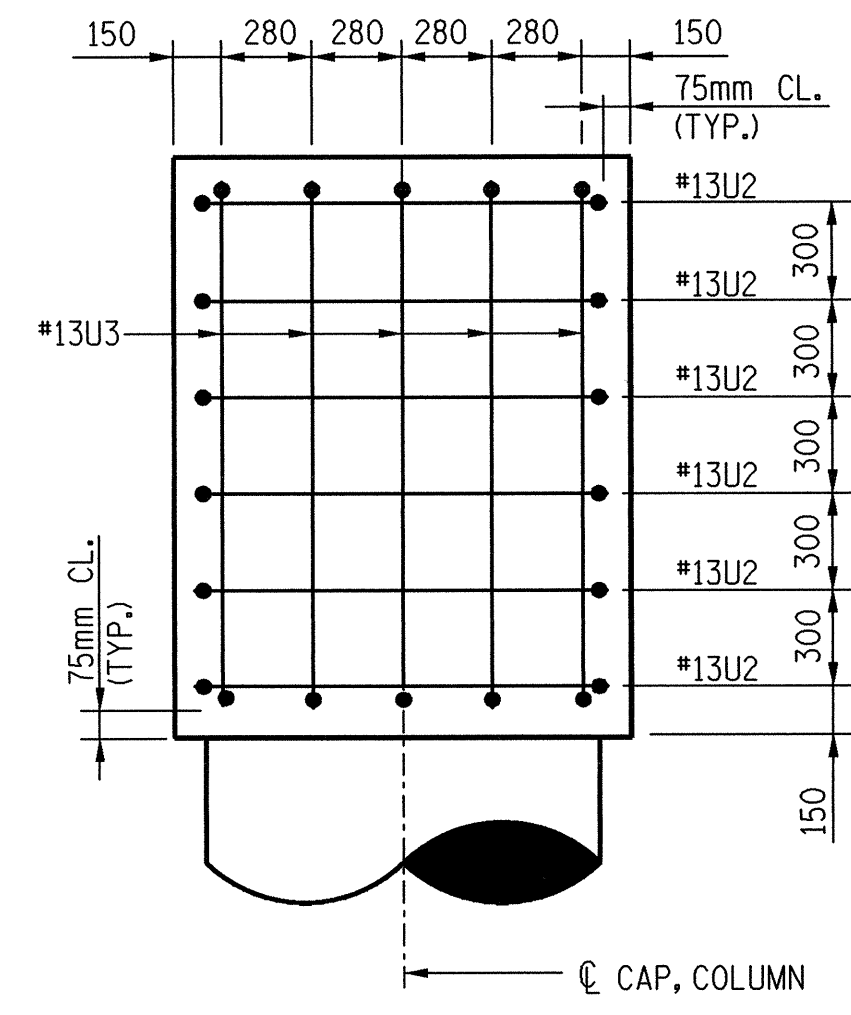
SECTION A-A



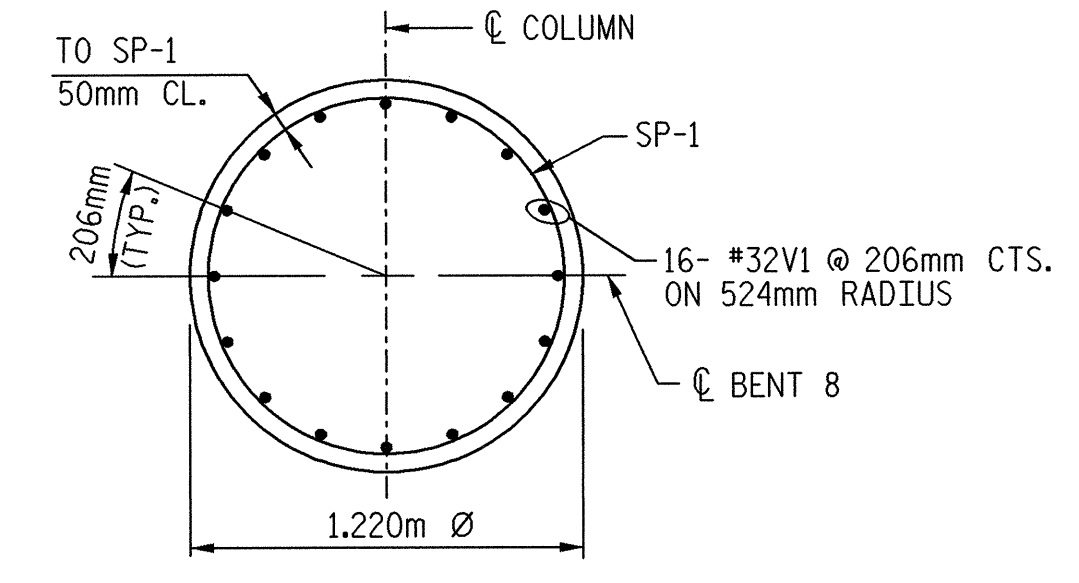
SECTION B-B



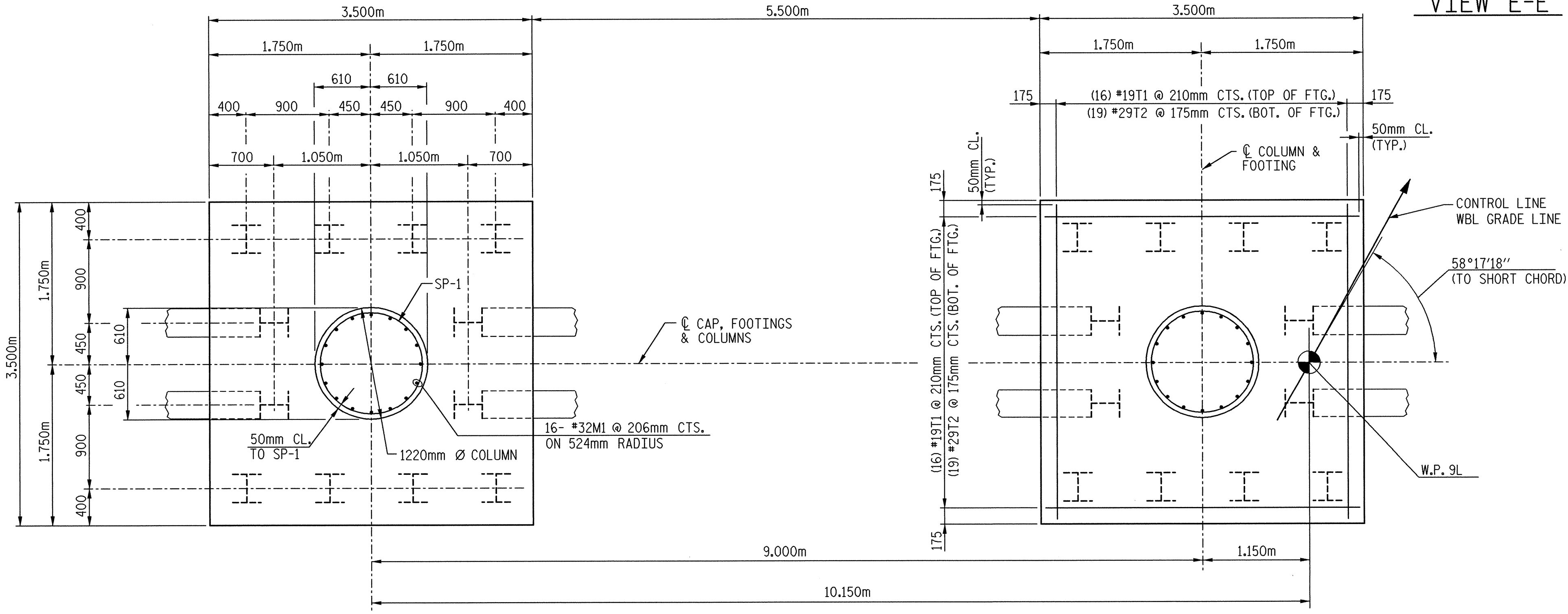
VIEW D-D



VIEW E-E



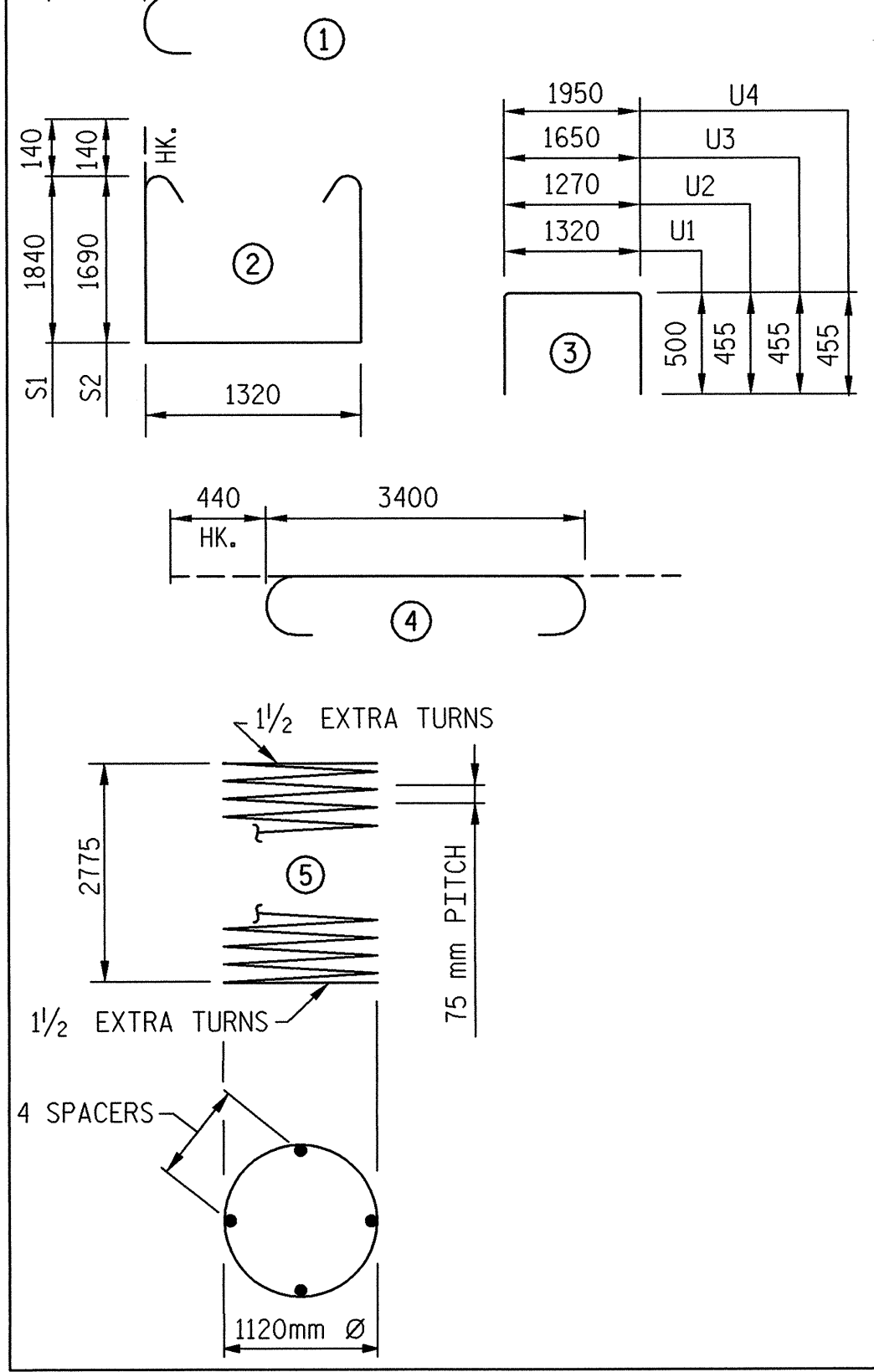
SECTION C-C



FOOTING PLAN

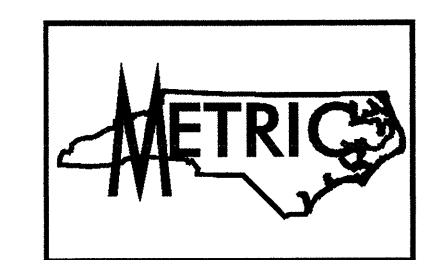
DETAILS SHOWN ARE TYPICAL FOR ALL FOOTINGS & COLUMNS UNLESS OTHERWISE NOTED

BAR TYPES			BILL OF MATERIALS			
ALL BAR DIMENSIONS ARE OUT TO OUT.			BENT #8			
BAR	NO.	SIZE	TYPE	LENGTH	WEIGHT	
440	3700	#32	STR.	14600	935	
430	8870	#32	1	8580	495	
430	8150	#32	1	9300	536	
440	2640	#16	STR.	6660	21	
B5		#16	STR.	14600	136	
B6		#13	STR.	1840	16	
M1	32	#32	1	3080	631	
S1	31	#16	2	5280	254	
S2	26	#16	2	4980	201	
T1	32	#19	STR.	3400	243	
T2	38	#29	4	4280	823	
U1	47	#13	3	2320	108	
U2	13	#13	3	2180	28	
U3	5	#13	3	2560	13	
U4	5	#13	3	2860	14	
V1	32	#32	1	4140	848	
SPIRAL COLUMN REINFORCING STEEL						
SP-1	2	*	5	139160	277	
BENT #8 TOTAL QUANTITIES						
HP310 x 79 PILES No: 24 204.0 m						
GALVANIZING STEEL PILES LUMP SUM						
REINFORCING STEEL 5302 kg.						
SPIRAL COLUMN REINFORCING STEEL 277 kg.						
CLASS "A" CONCRETE BREAKDOWN BY POUR						
POUR 1 (FOOTINGS) 27.0 m ³						
POUR 2 (COLUMNS) 6.3 m ³						
POUR 3 (CAPS) 40.4 m ³						
TOTAL CLASS "A" CONCRETE 73.7 m ³						



* THE SP-1 SPIRAL REINFORCING STEEL SHALL BE #20 OR D-20 COLD DRAWN WIRE OR #13 PLAIN OR DEFORMED BAR.

DRAWN BY: J. C. PENDERGRAFT DATE: 8/01
 CHECKED BY: D. B. HOFF DATE: 2/02



PROJECT NO. R-2552AB
 JOHNSTON COUNTY
 STATION: 40+80.00 -L- P.O.C.
 SHEET 2 OF 2

TRANSYSTEMS CORPORATION
 75 Battle Place, Suite 400
 Greenville, SC 29601 (864) 234-0866

STATE OF NORTH CAROLINA
 DEPARTMENT OF TRANSPORTATION
 RALEIGH

SEAL 16335
 ENGINEER
 DAVID B. HOFF

DWG. NO. 56 TOTAL 68

REVISIONS						SHEET NO.
NO.	BY:	DATE:	NO.	BY:	DATE:	
1			3			5-315
2			4			TOTAL SHEETS 429