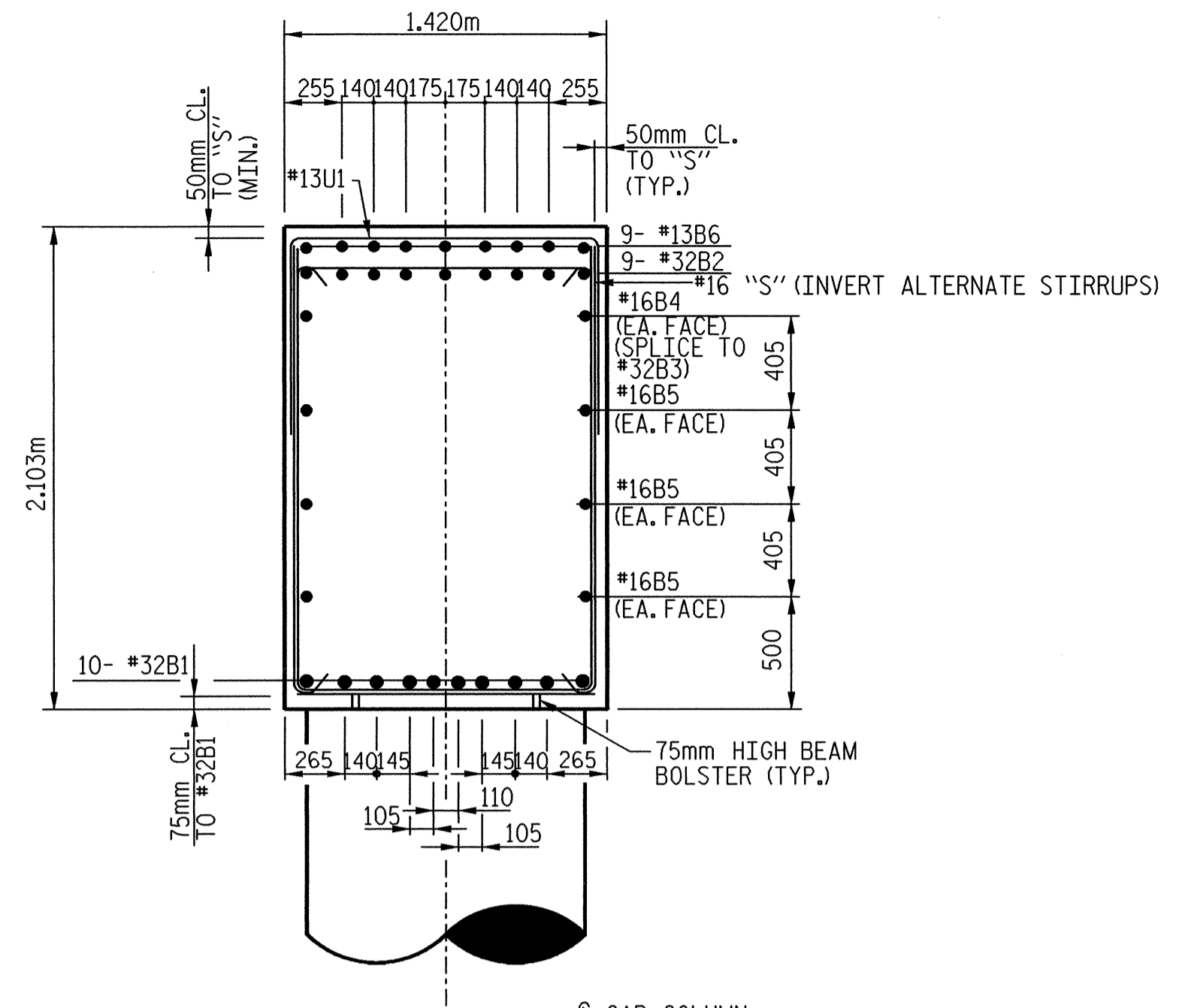
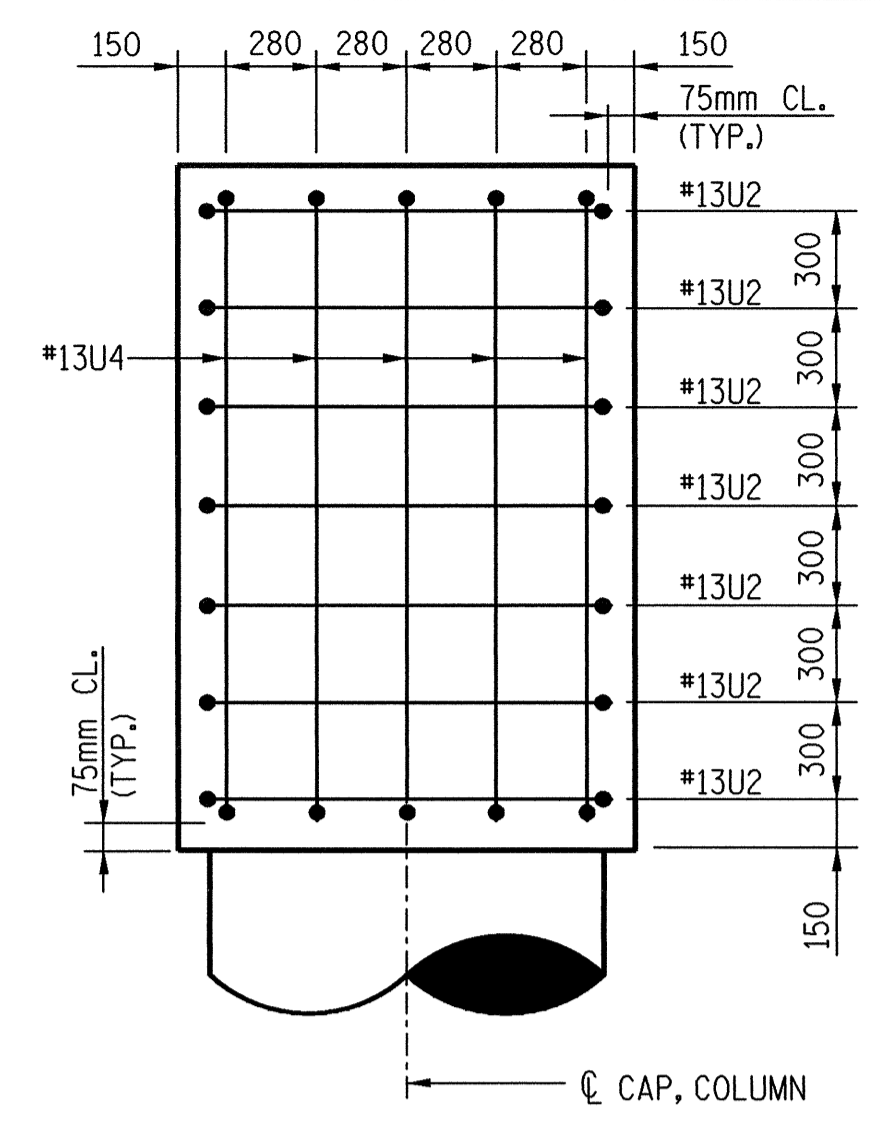


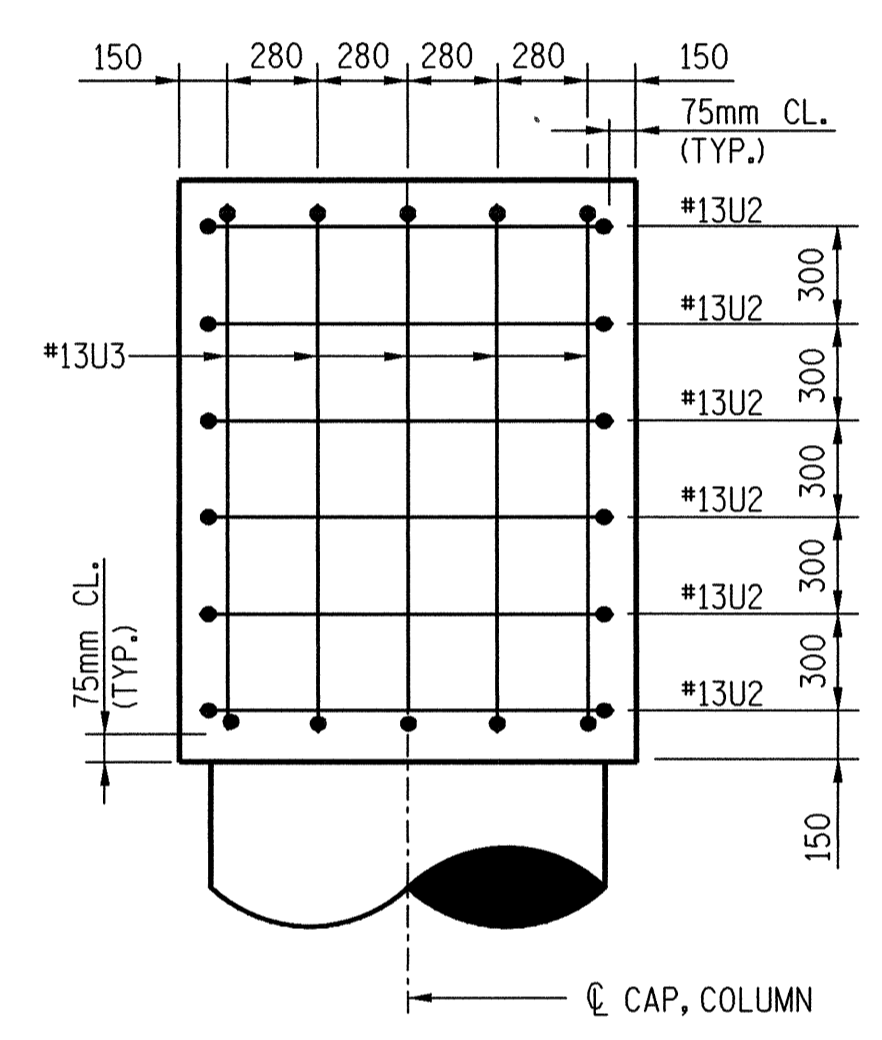
SECTION A-A



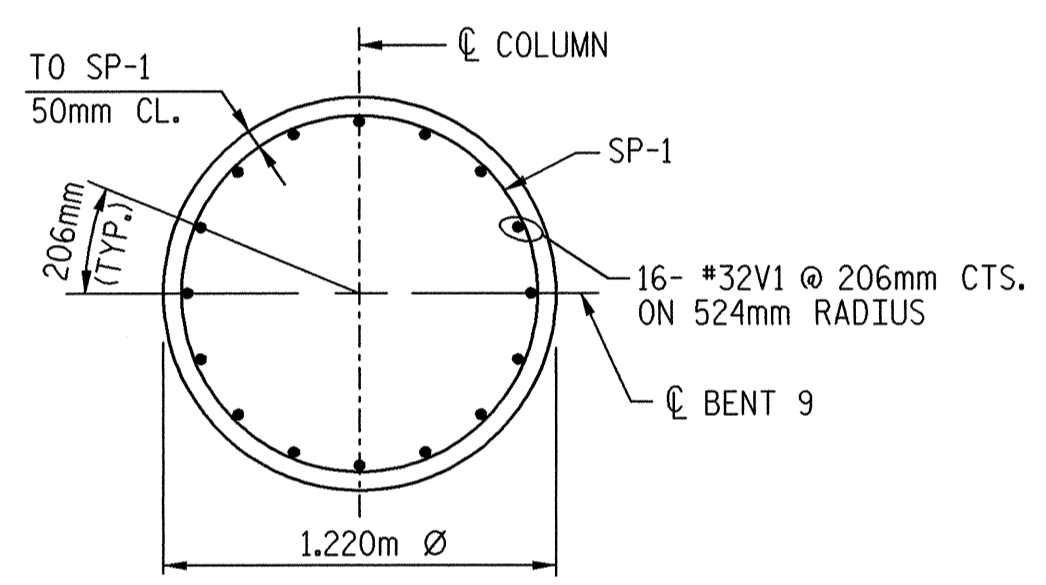
SECTION B-B



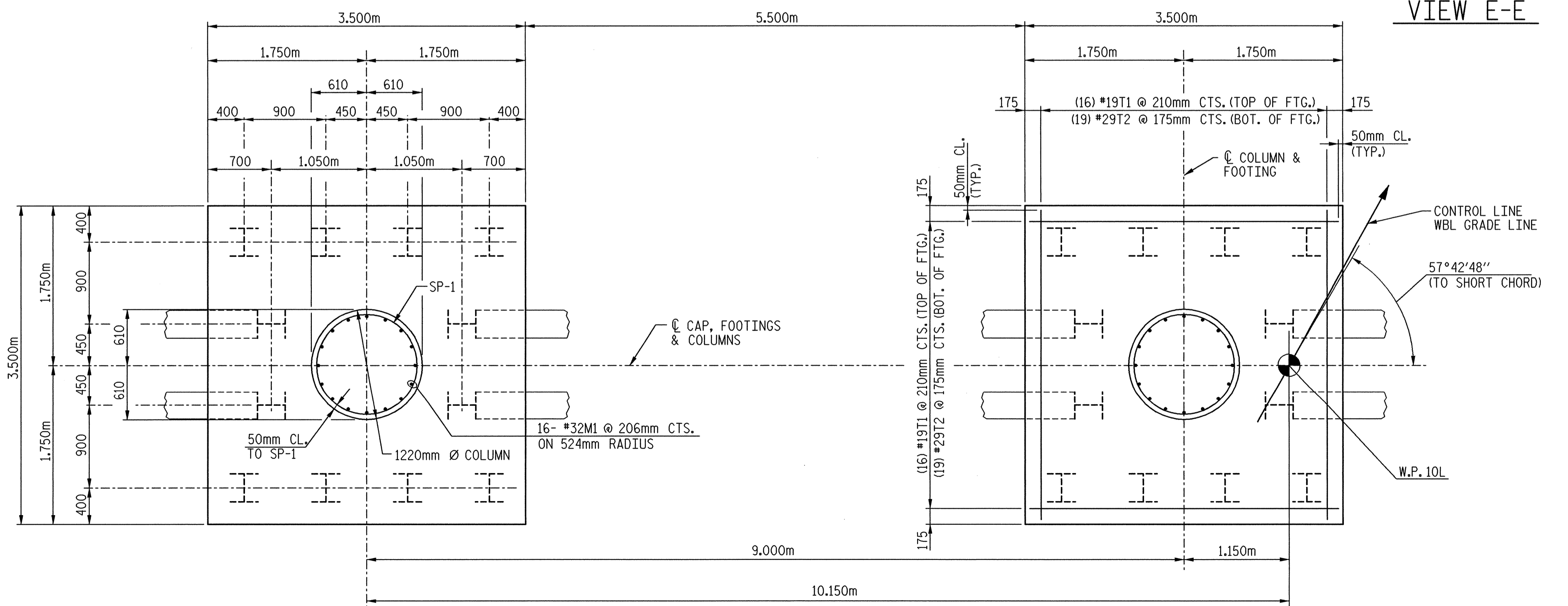
VIEW D-D



VIEW E-E

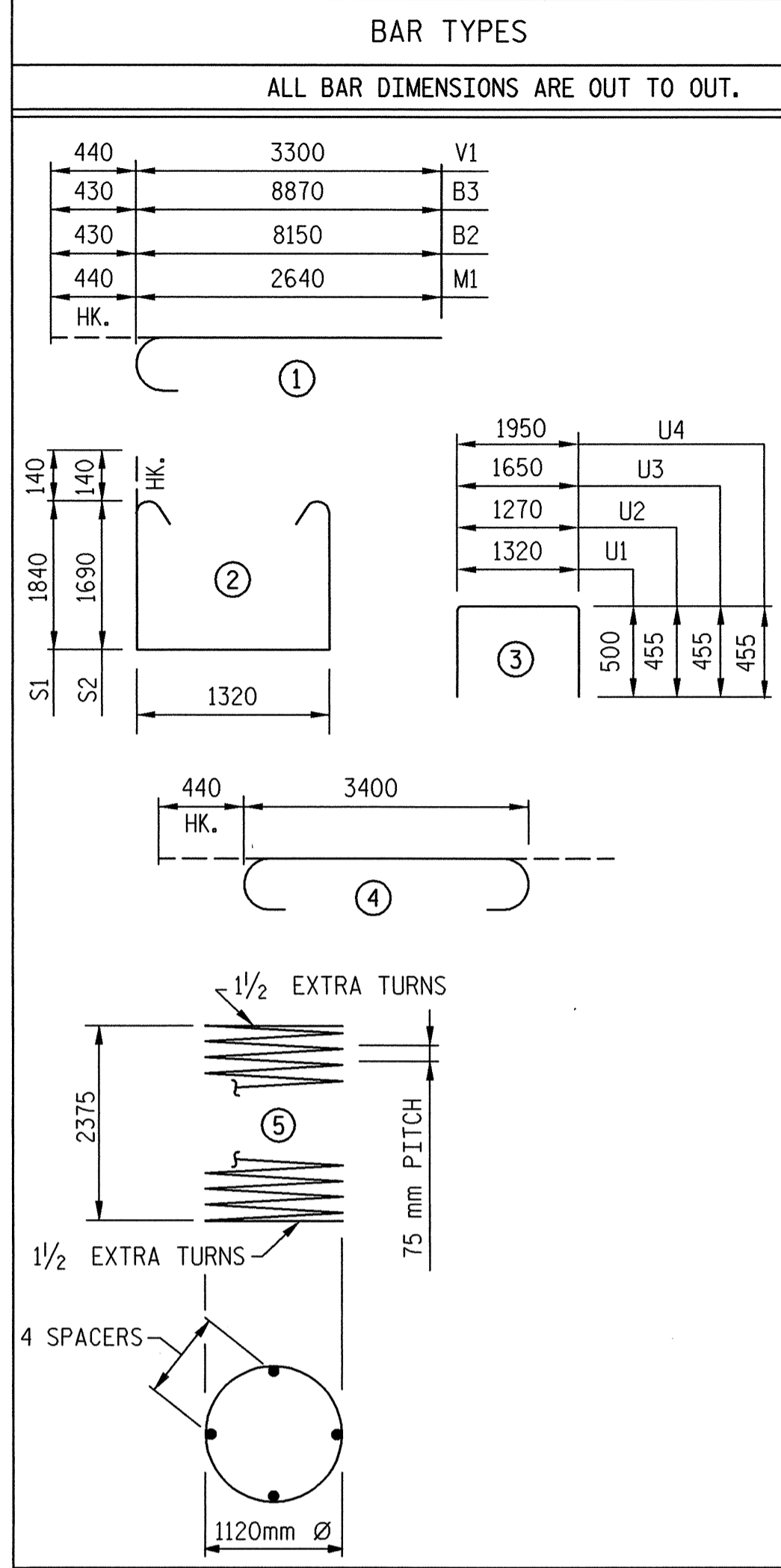


SECTION C-C



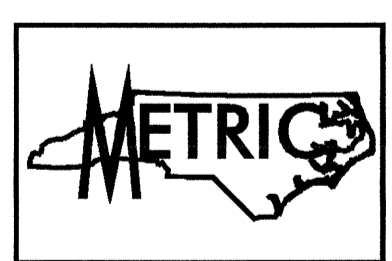
FOOTING PLAN

DETAILS SHOWN ARE TYPICAL FOR ALL FOOTINGS & COLUMNS UNLESS OTHERWISE NOTED



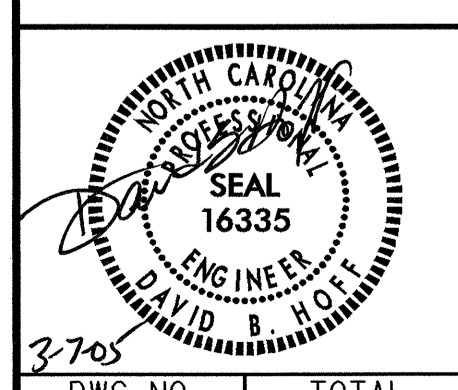
BAR TYPES		BILL OF MATERIALS				
ALL BAR DIMENSIONS ARE OUT TO OUT.						
BENT #9						
BAR	NO.	SIZE	TYPE	LENGTH	WEIGHT	
B1	10	#32	STR.	14600	935	
B2	9	#32	1	8580	495	
B3	9	#32	1	9300	536	
B4	2	#16	STR.	6660	21	
B5	6	#16	STR.	14600	136	
B6	9	#13	STR.	1840	16	
M1	32	#32	1	3080	631	
S1	31	#16	2	5280	254	
S2	26	#16	2	4980	201	
T1	32	#19	STR.	3400	243	
T2	38	#29	4	4280	823	
U1	47	#13	3	2320	108	
U2	13	#13	3	2180	28	
U3	5	#13	3	2560	13	
U4	5	#13	3	2860	14	
V1	32	#32	1	3740	766	
SPRAL COLUMN REINFORCING STEEL						
SP-1	2	*	5	120600	240	
BENT #9 TOTAL QUANTITIES						
HP310 x 79 PILES No: 24 192.0 m						
GALVANIZING STEEL PILES LUMP SUM						
REINFORCING STEEL 5220 kg.						
SPRAL COLUMN REINFORCING STEEL 240 kg.						
CLASS "A" CONCRETE BREAKDOWN BY POUR						
POUR 1 (FOOTINGS) 27.0 m ³						
POUR 2 (COLUMNS) 5.4 m ³						
POUR 3 (CAPS) 40.4 m ³						
TOTAL CLASS "A" CONCRETE 72.8 m ³						

* THE SP-1 SPIRAL REINFORCING STEEL SHALL BE W20 OR D-20 COLD DRAWN WIRE OR #13 PLAIN OR DEFORMED BAR.



PROJECT NO. R-2552AB
 JOHNSTON COUNTY
 STATION: 40+80.00 -L- P.O.C.
 SHEET 2 OF 2

TRANSYSTEMS CORPORATION
 75 Beattie Place, Suite 400
 Greenville, SC 29601 (864) 234-0866



STATE OF NORTH CAROLINA
 DEPARTMENT OF TRANSPORTATION
 RALEIGH
 SUBSTRUCTURE
 BENT #9
 DETAILS
 (LEFT LANE)

REVISIONS						SHEET NO.
NO.	BY:	DATE:	NO.	BY:	DATE:	
1			3			5-317
2			4			TOTAL SHEETS 429

FILE \$
 DATE \$
 TIME \$
 DRAWN BY: J. C. PENDERGRAFT DATE: 8/01
 CHECKED BY: D. B. HOFF DATE: 2/02

DWG. NO. 58 TOTAL 68