

NOTES

THE CONTRACTOR SHALL BE RESPONSIBLE FOR DETERMINING THE TOTAL QUANTITY OF CONDUIT NEEDED TO COMPLETE THE WORK AND THAT THE CONDUIT(S) ARE PLACED AT THE NOTED DIMENSION AND ABOVE THE BOTTOM OF THE GIRDER.

THE INSTALLATION OF THE CONDUIT SYSTEM SHALL BE PAID FOR AS LUMP SUM. THE PRICE SHALL INCLUDE ALL CONDUIT, HANGERS, STABILIZERS, EXPANSION JOINTS, CONCRETE INSERTS, PVC SLEEVES AND ALL NECESSARY HARDWARE TO COMPLETE THE WORK.

THE CONTRACTOR SHALL FIELD VERIFY THAT THE CONDUIT SYSTEM IS NOT IN CONFLICT WITH THE GUARDRAIL POSTS.

SEE DETAIL "C" FOR HANGER ASSEMBLY INSTALLATION.

INSTALL SLEEVES PARALLEL TO GIRDERS. SEE DETAIL "B" FOR SLEEVE INSTALLATION.

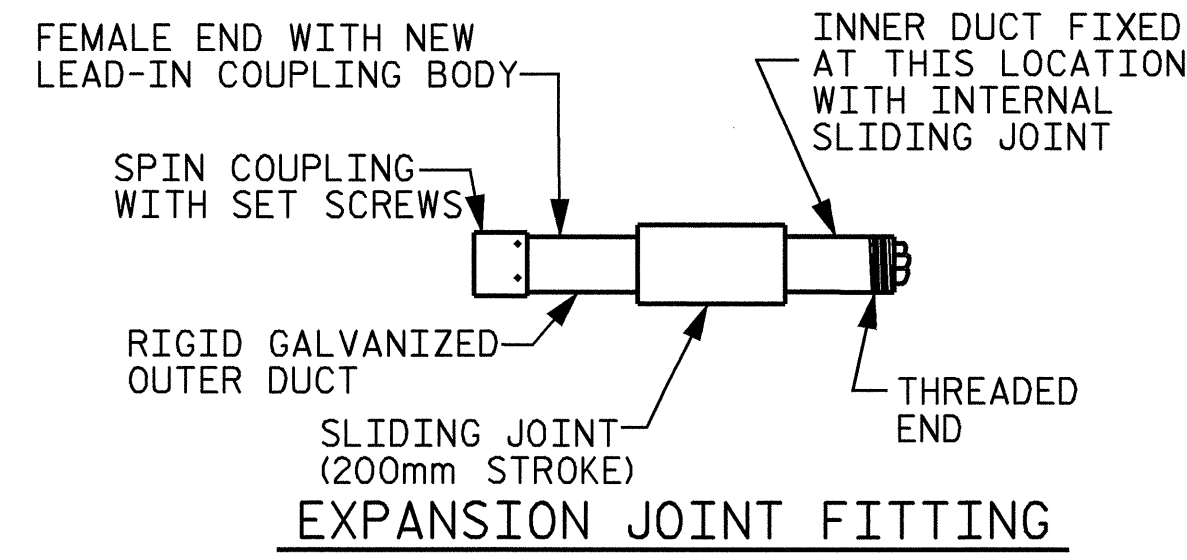
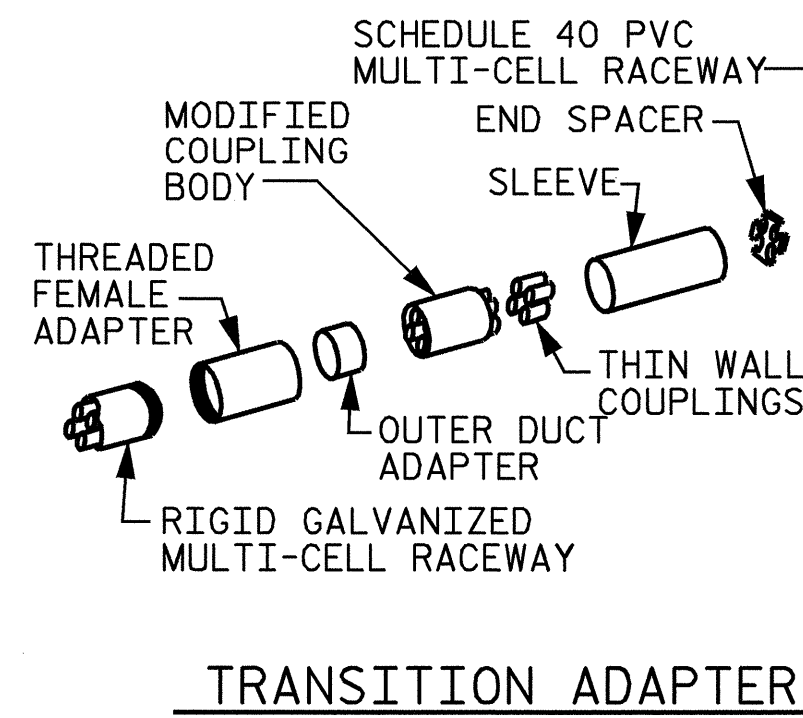
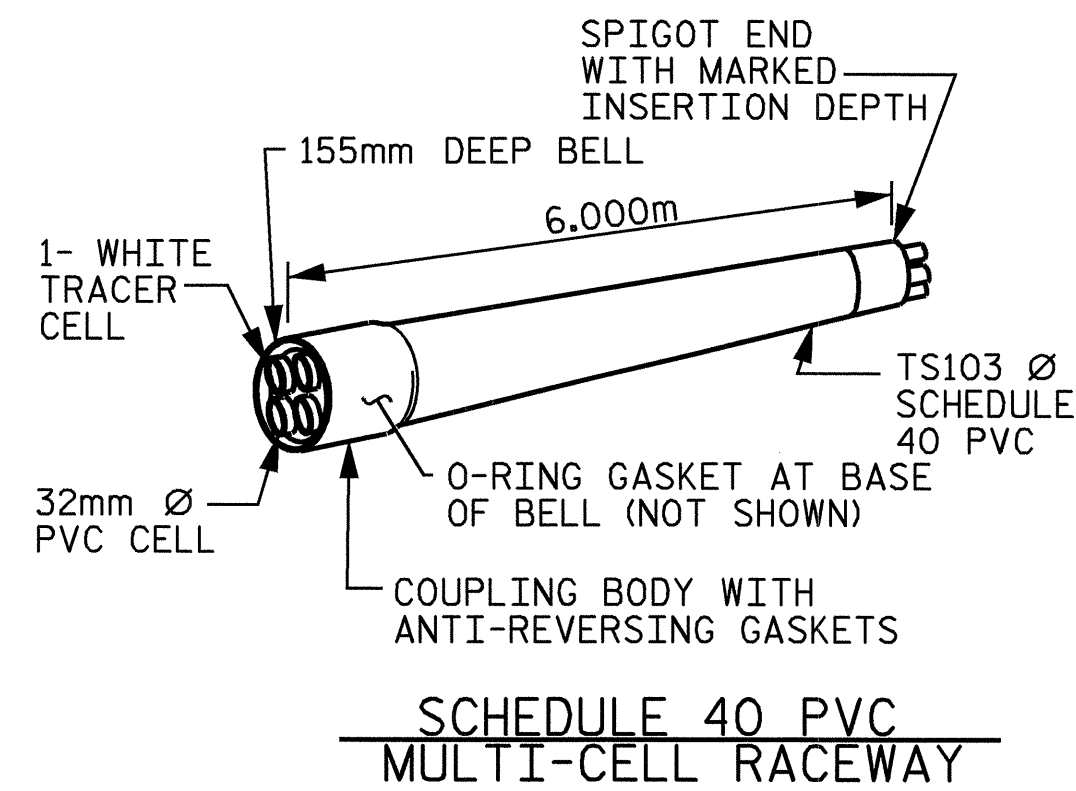
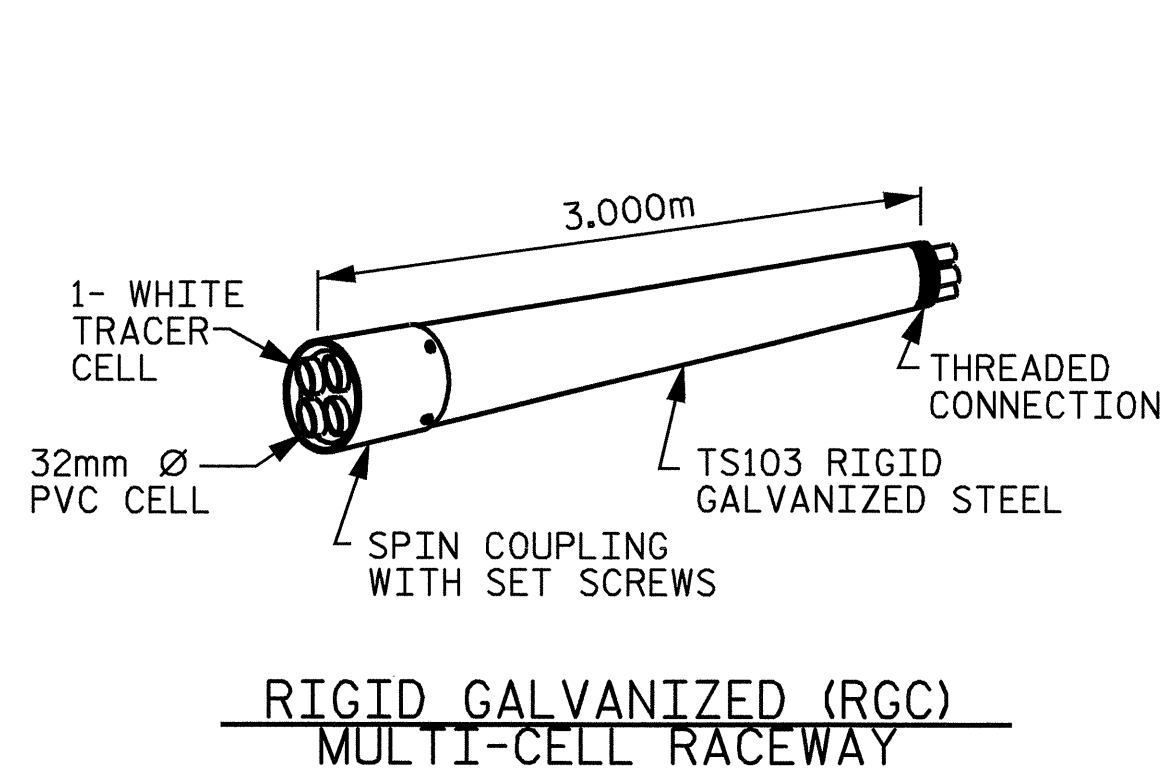
PROVIDE TRANSITION ADAPTOR (AND EXPANSION JOINT) FOR CONDUIT AT END BENT 1 (AND END BENT 2).

INSTALL STABILIZER'S MIDWAY BETWEEN DECK EXPANSION JOINTS. STABILIZERS CAN NOT BE USED INSTEAD OF HANGER ASSEMBLY.

INSTALL EXPANSION JOINTS AT BENT#1, BENT#4, BENT#7, AND BENT#10.

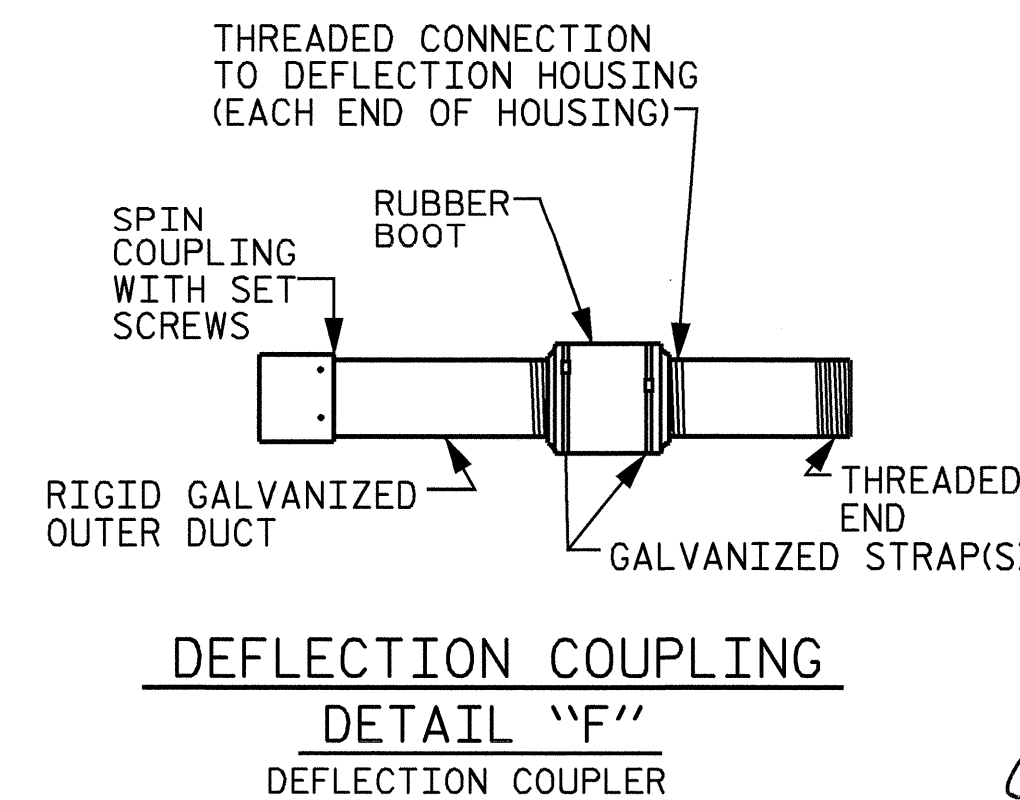
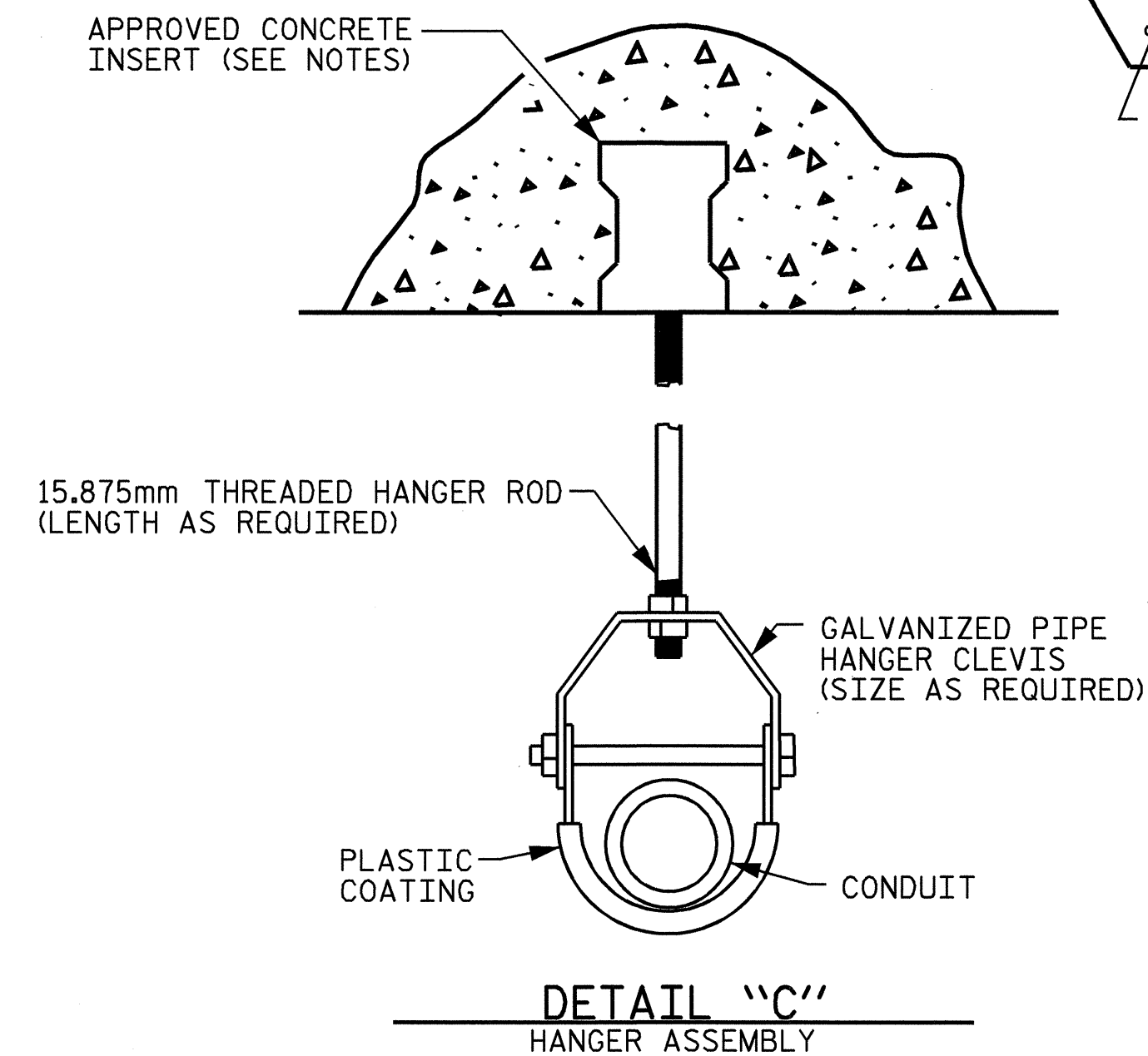
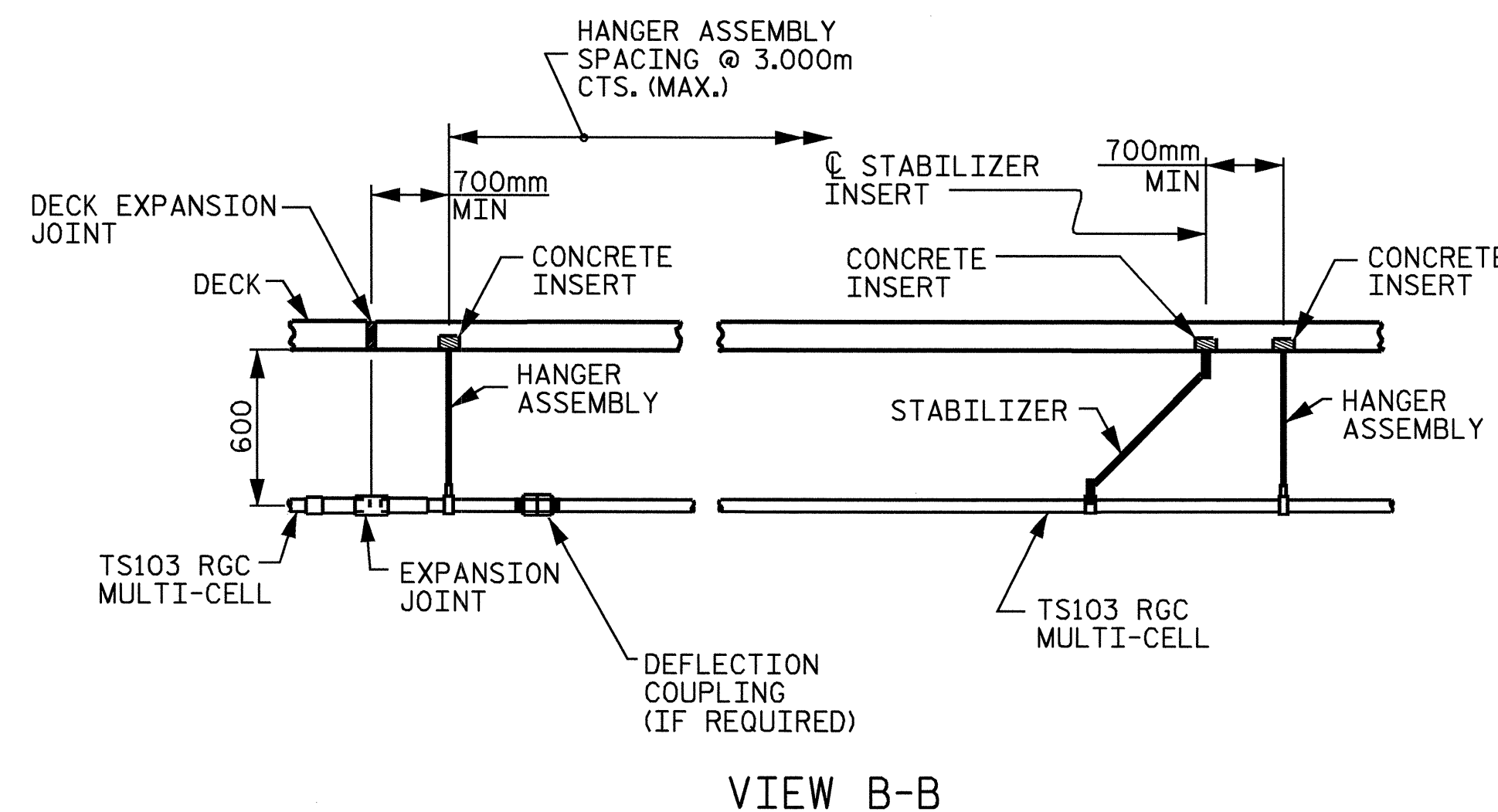
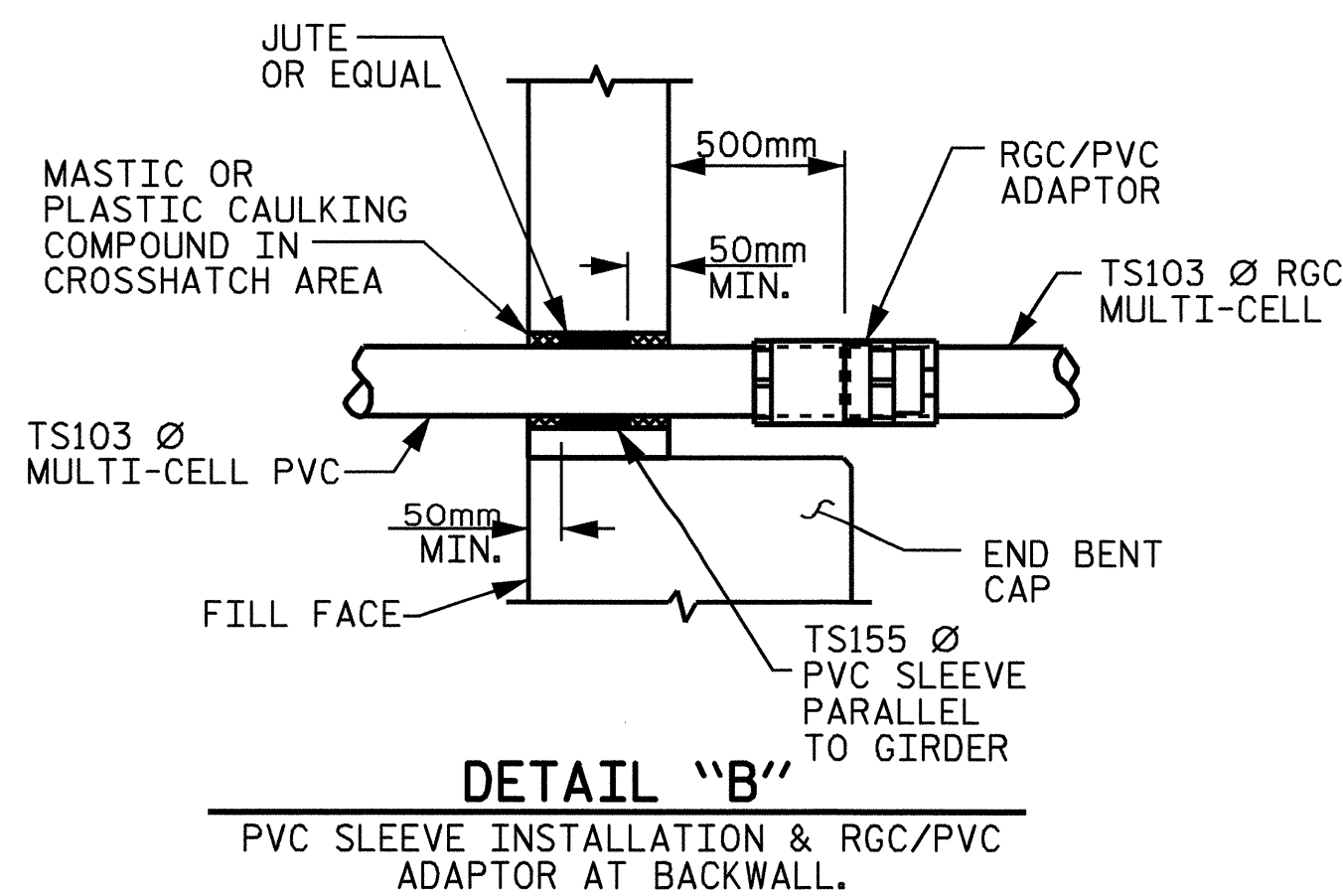
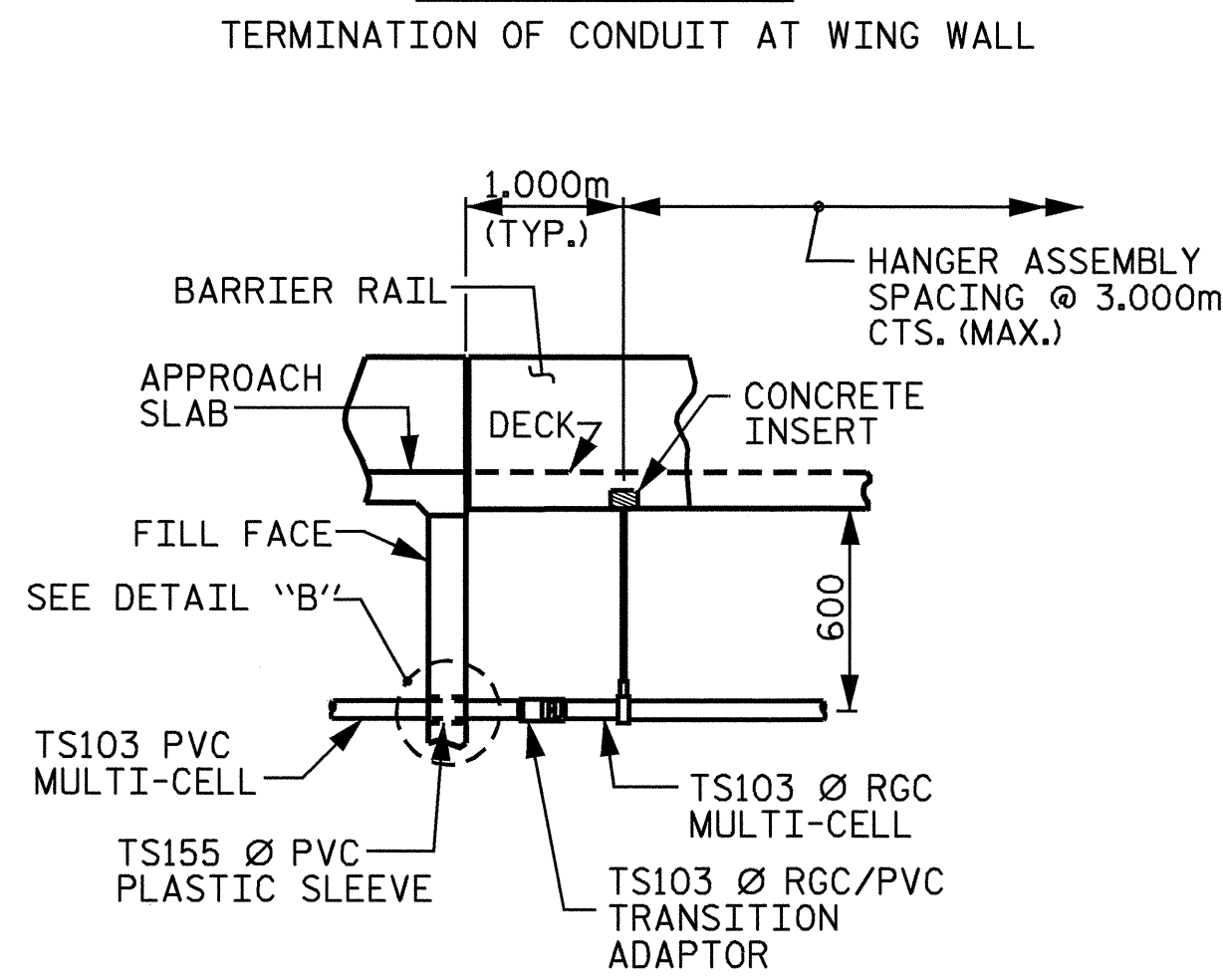
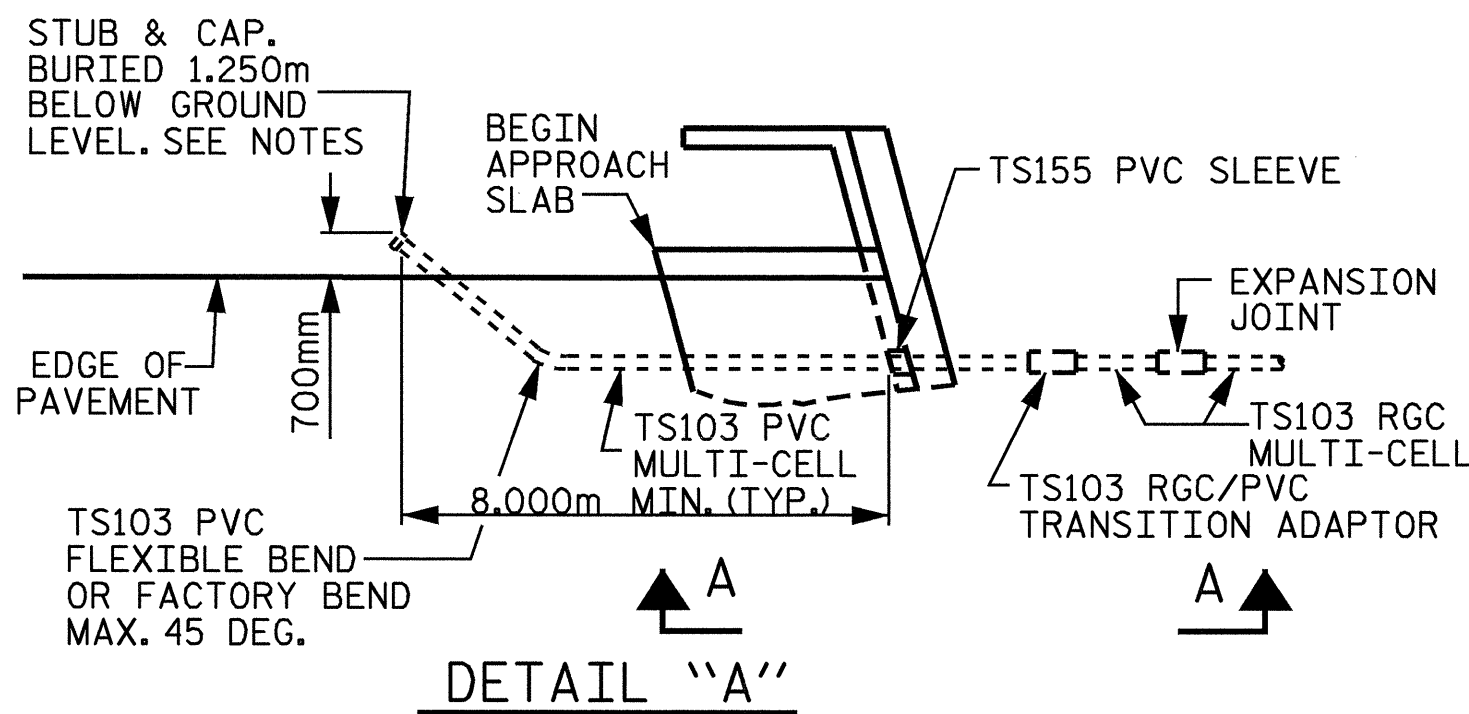
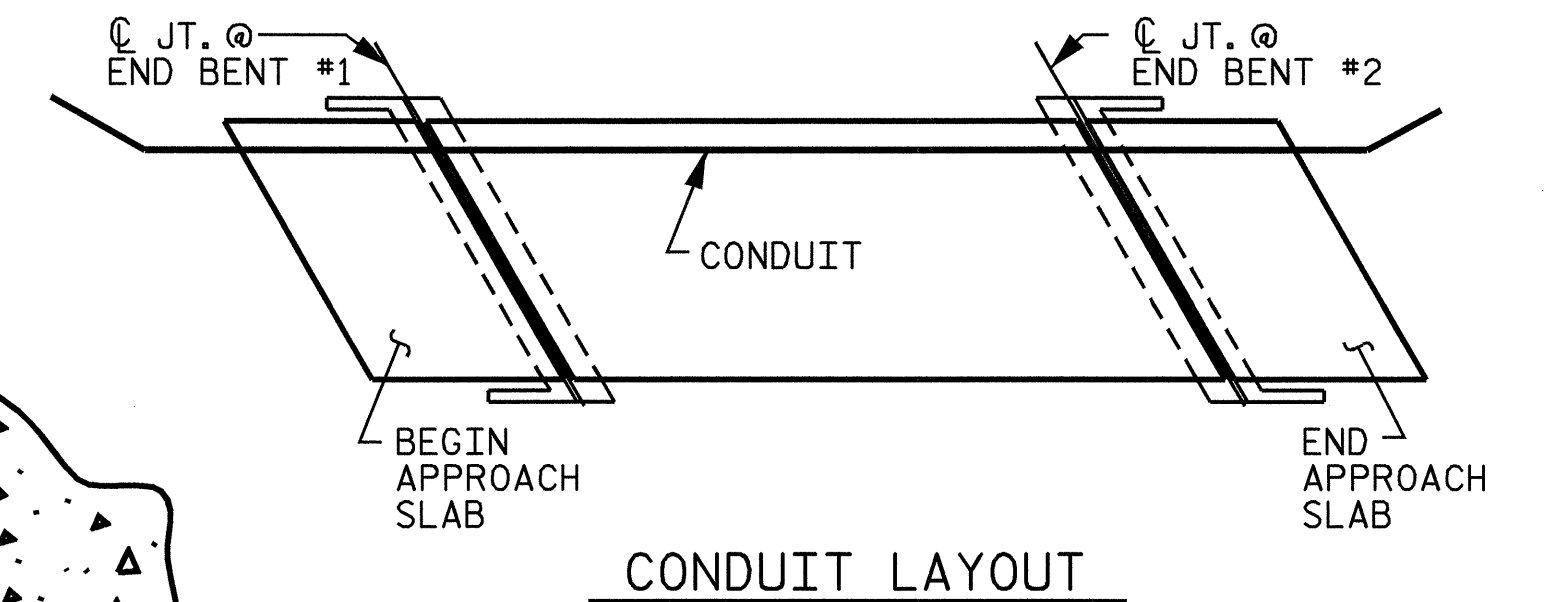
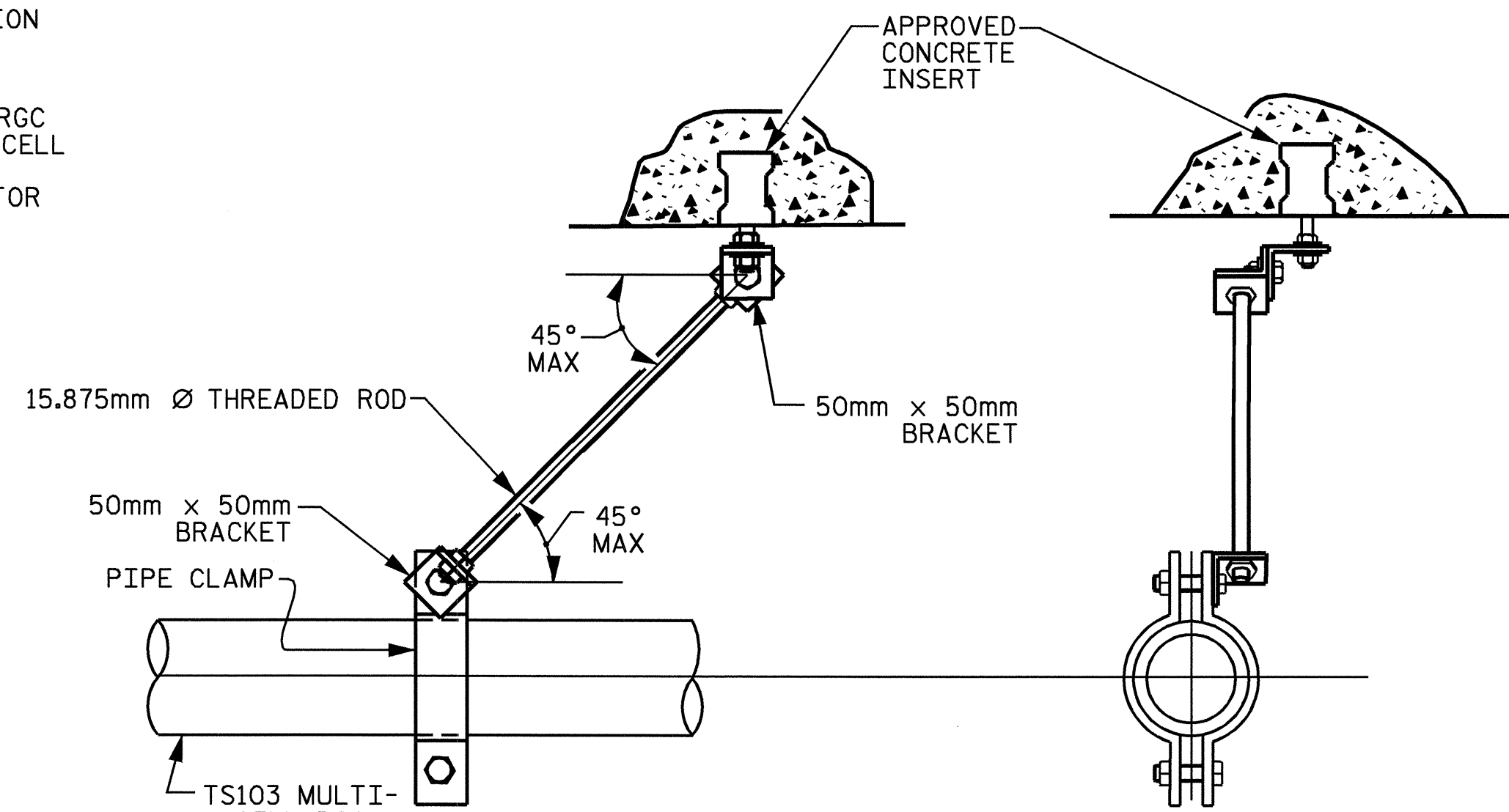
THE CONCRETE SCREW INSERT SHALL HAVE A ROD SIZE OF 15.875mm AND A PULL FORCE OF 580 kg.

FOR ELECTRICAL CONDUIT SYSTEM, SEE SPECIAL PROVISIONS.



DETAIL "D"

TS103 MULTI-CELL COMPONENTS



ELECTRIC CONDUIT DETAILS

ASSEMBLED BY: R.D. MARTIN DATE: 2/18/05
 CHECKED BY: G.S. HOLMES DATE: 3/3/05
 DRAWN BY: RWW 2-4-03
 CHECKED BY: DBM 2-4-03

PROJECT NO. R-2552AB
 JOHNSTON COUNTY
 STATION: 40+80.000-L-P.O.C.

STATE OF NORTH CAROLINA DEPARTMENT OF TRANSPORTATION RALEIGH						SHEET NO. 5-323
STANDARD ELECTRICAL CONDUIT SYSTEM DETAILS						
REVISIONS						TOTAL SHEETS 429
NO.	BY:	DATE:	NO.	BY:	DATE:	
1			3			
2			4			