

40+00

41+00

VPI = 38+00.000

EL. = 65.400

VC = 200.000m

-2.6877% 0.5000%

GRADE DATA -L-

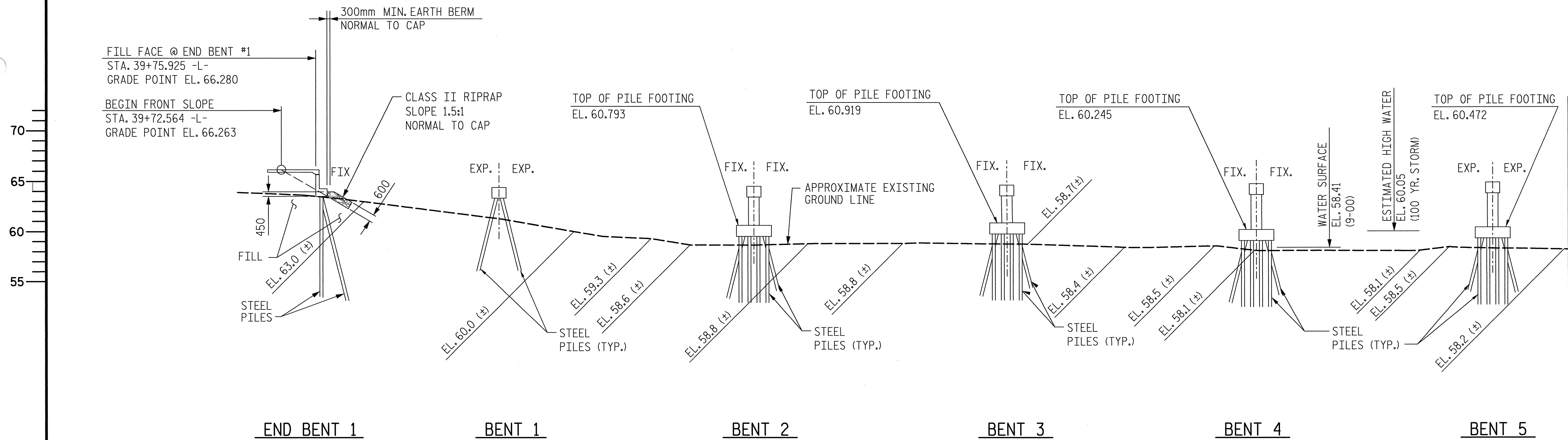
SPAN "A"

SPAN "B"

SPAN "C"

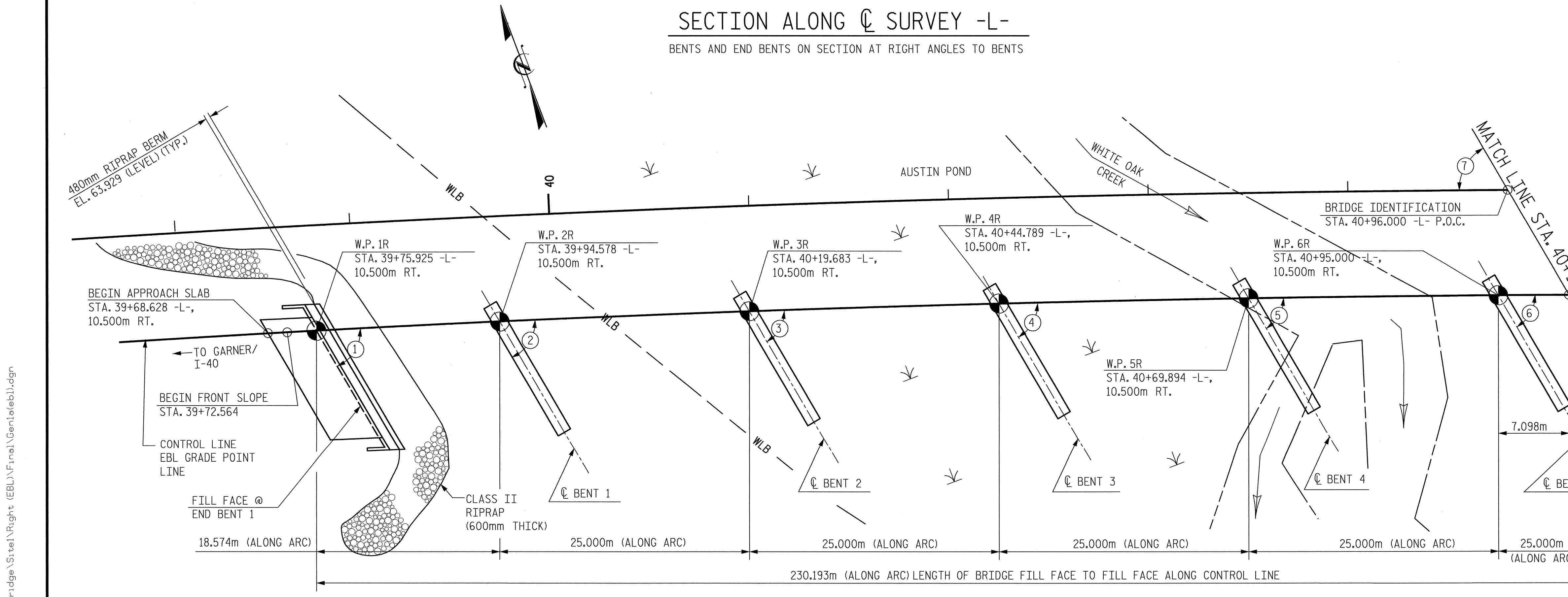
SPAN "D"

SPAN "E"



HYDRAULIC DATA	
DESIGN DISCHARGE	99 m ³ /S
FREQUENCY OF DESIGN FLOOD	50 YR.
DESIGN HIGH WATER ELEVATION	59.86
DRAINAGE AREA	26.4 Km ²
BASIC DISCHARGE (Q 100)	110 m ³ /S
BASIC HIGH WATER ELEVATION	59.94

OVERTOPPING FLOOD DATA	
OVERTOPPING DISCHARGE	N/A m ³ /S
FREQUENCY OF OVERTOPPING FLOOD	500 YR+
OVERTOPPING FLOOD ELEVATION	66.00

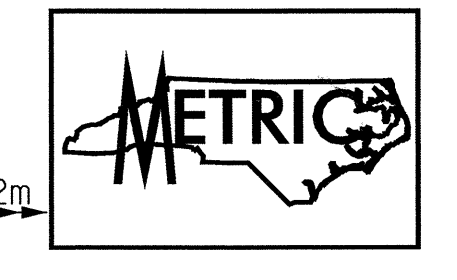


-L-

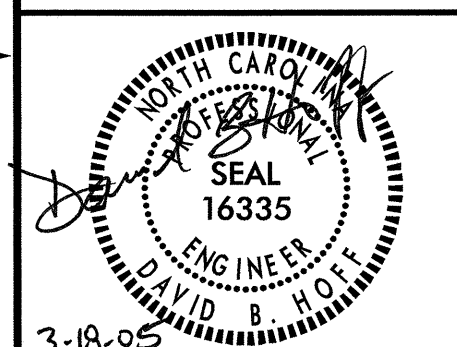
P.I. = 38+81.623
 $\Delta = 20^\circ 44' 47.45''$ (RT.)
 T = 457.630m
 L = 905.237m
 R = 2,500.000m
 SUPER = 0.03m/m

TABLE OF ANGLES	
No.	ANGLE
1	62°43'44"
2	62°18'05"
3	61°43'34"
4	61°09'02"
5	60°34'31"
6	60°00'00"
7	60°00'00"

PROJECT NO. R-2552AB
 JOHNSTON COUNTY
 STATION: 40+96.000 -L- P.O.C.
 BRIDGE NO. 580



TRANSYSTEMS CORPORATION
 75 Beattie Place, Suite 400
 Greenville, SC 29601 (864) 234-0866



STATE OF NORTH CAROLINA
 DEPARTMENT OF TRANSPORTATION
 RALEIGH
 GENERAL DRAWING
 BRIDGE ON US 70 (CLAYTON BYPASS)
 OVER WHITE OAK CREEK (AUSTIN POND)
 BETWEEN SR 1525 (CORNWALLIS RD.)
 AND NC 42 (RIGHT LANE)

REVISIONS		SHEET NO.	
NO.	BY:	NO.	DATE:
1		3	
2		4	

SHEET NO. S-332
 TOTAL SHEETS 429

DRAWN BY: J.B. GEILE DATE: 1/02
 CHECKED BY: D.B. HOFF DATE: 1/02

g:\V04\0125\B-edge\Site\Right (EBL)\Final\Gen\Teleb1.dgn
 3/17/2005 10:37:45 AM