

41+00

42+00

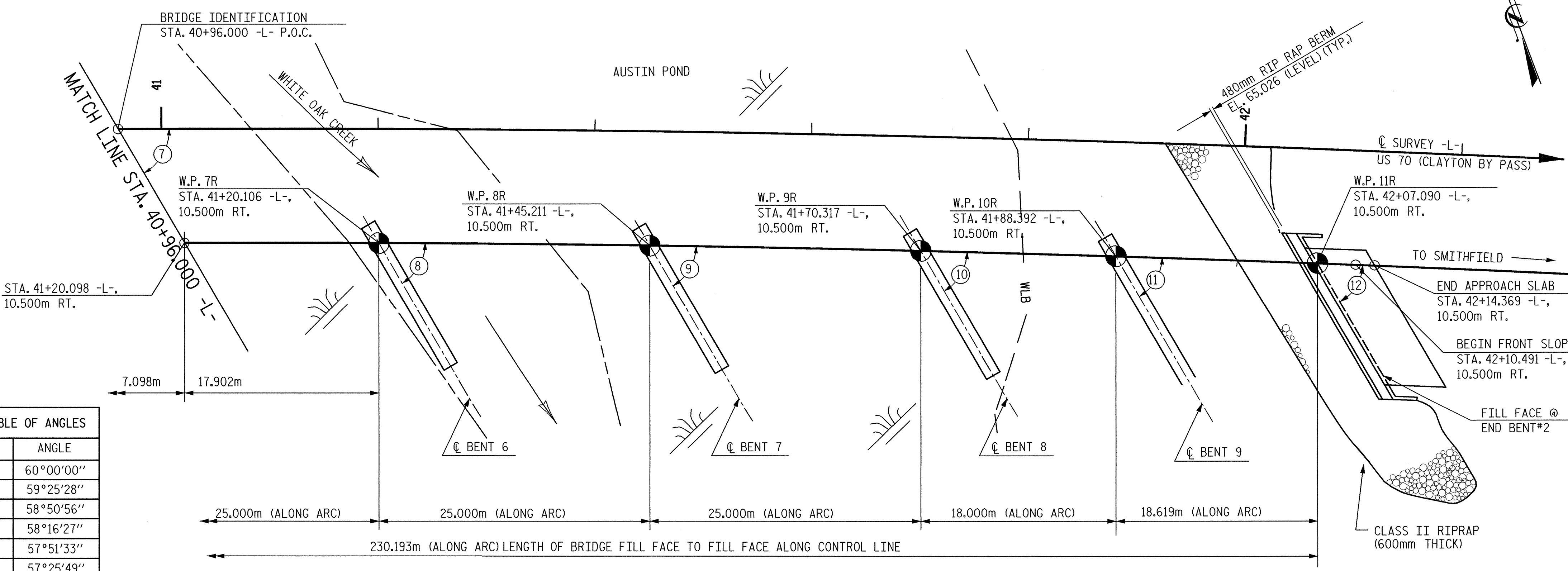
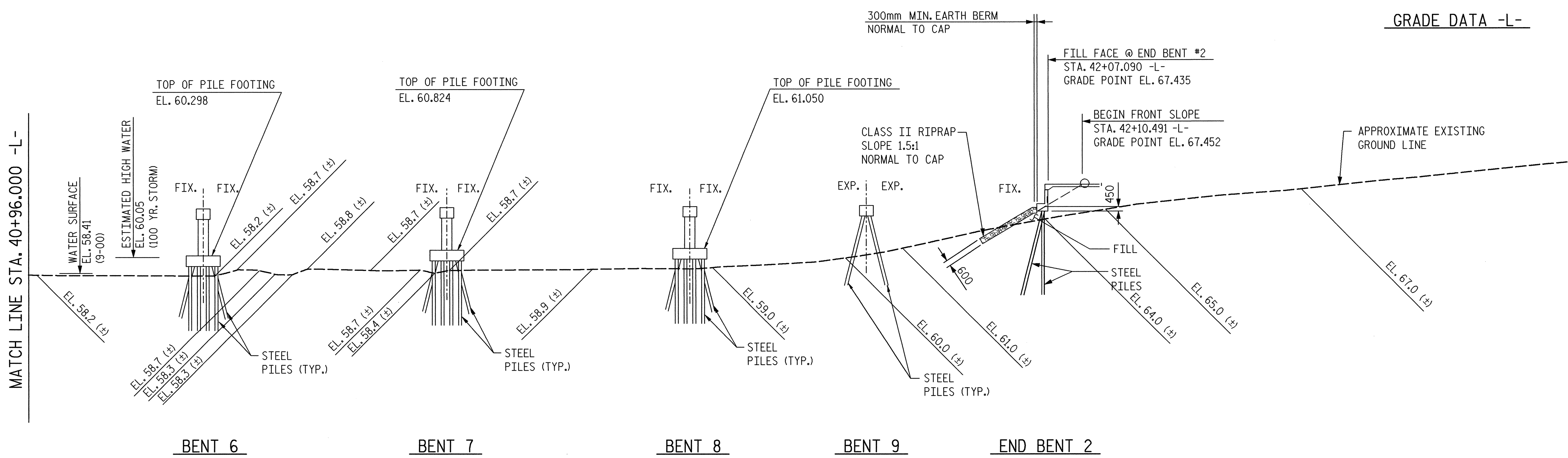
VPI = 42+30.00  
EL. = 68.050  
VC = 180.000m

0.5000%  $\Delta$  3.4398%

GRADE DATA -L-

SPAN "F"      SPAN "G"      SPAN "H"      SPAN "I"      SPAN "J"

70  
65  
60  
55



-L-  
P.I. = 38+81.623  
D = 20°44'47.45" (RT.)  
T = 457.630m  
L = 905.237m  
R = 2,500.000m  
SUPER = 0.03m/m

No.	ANGLE
7	60°00'00"
8	59°25'28"
9	58°50'56"
10	58°16'27"
11	57°51'33"
12	57°25'49"

PLAN

PROJECT NO. R-2552AB  
JOHNSTON COUNTY  
STATION: 40+96.000 -L- P.O.C.



SHEET 2 OF 6

TRANSYSTEMS CORPORATION  
75 Beattie Place, Suite 400  
Greenville, SC 29601 (864) 234-0866

STATE OF NORTH CAROLINA  
DEPARTMENT OF TRANSPORTATION  
RALEIGH

GENERAL DRAWING  
BRIDGE ON US 70 (CLAYTON BYPASS)  
OVER WHITE OAK CREEK (AUSTIN POND)  
BETWEEN SR 1525 (CORNWALLIS RD.)  
AND NC 42 (RIGHT LANE)

REVISIONS

NO.	BY:	DATE:	NO.	BY:	DATE:
1			3		
2			4		

SHEET NO. 5-333  
TOTAL SHEETS 429

DRAWN BY: J.B. GEILE      DATE: 1/02  
CHECKED BY: D.B. HOFF      DATE: 1/02