

TYPICAL SECTION
(DIAPHRAGM @ END BENTS)

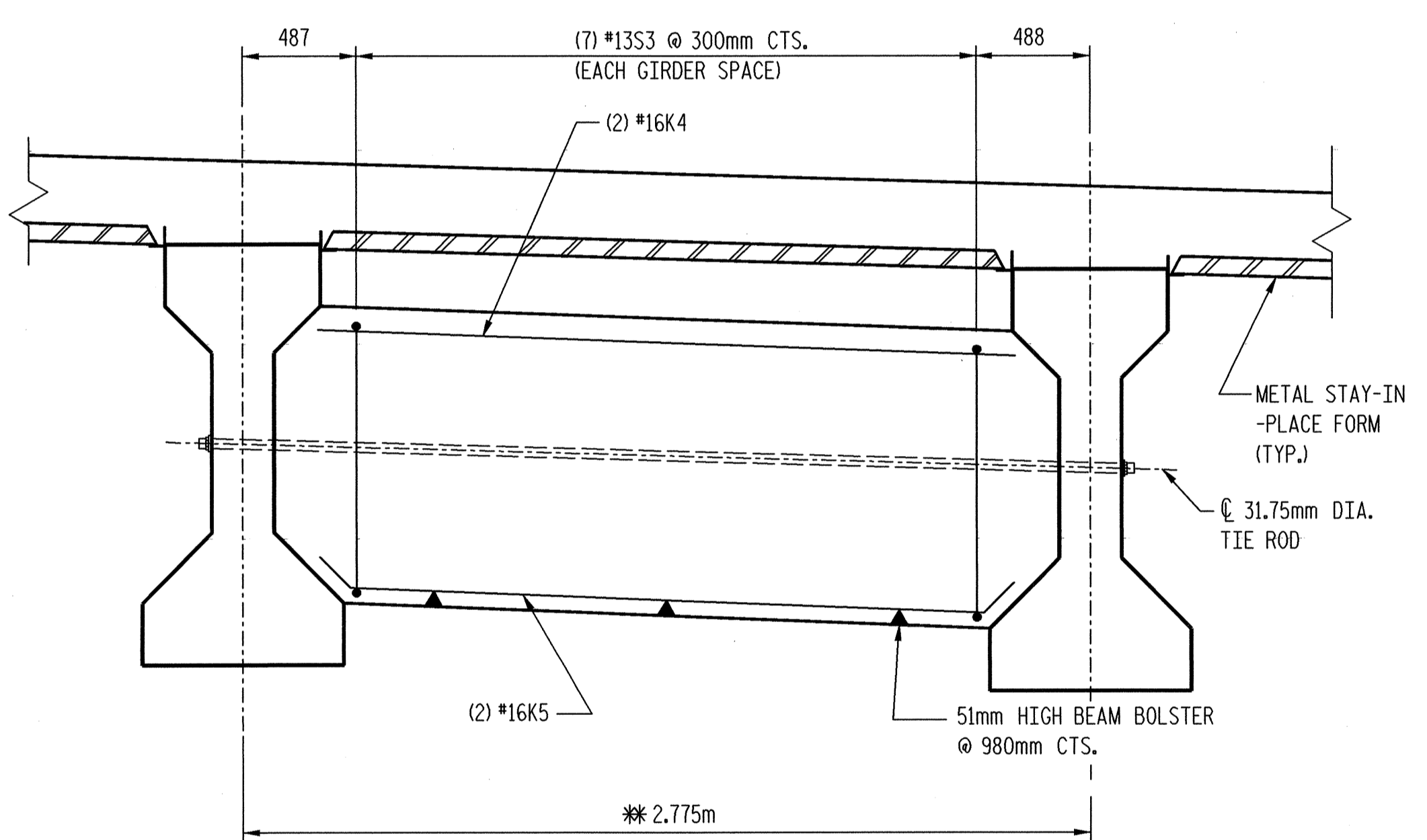
TYPICAL SECTION
(DIAPHRAGM @ INTERIOR BENTS)

TYPICAL SECTION
* DENOTES RADIAL DIMENSION

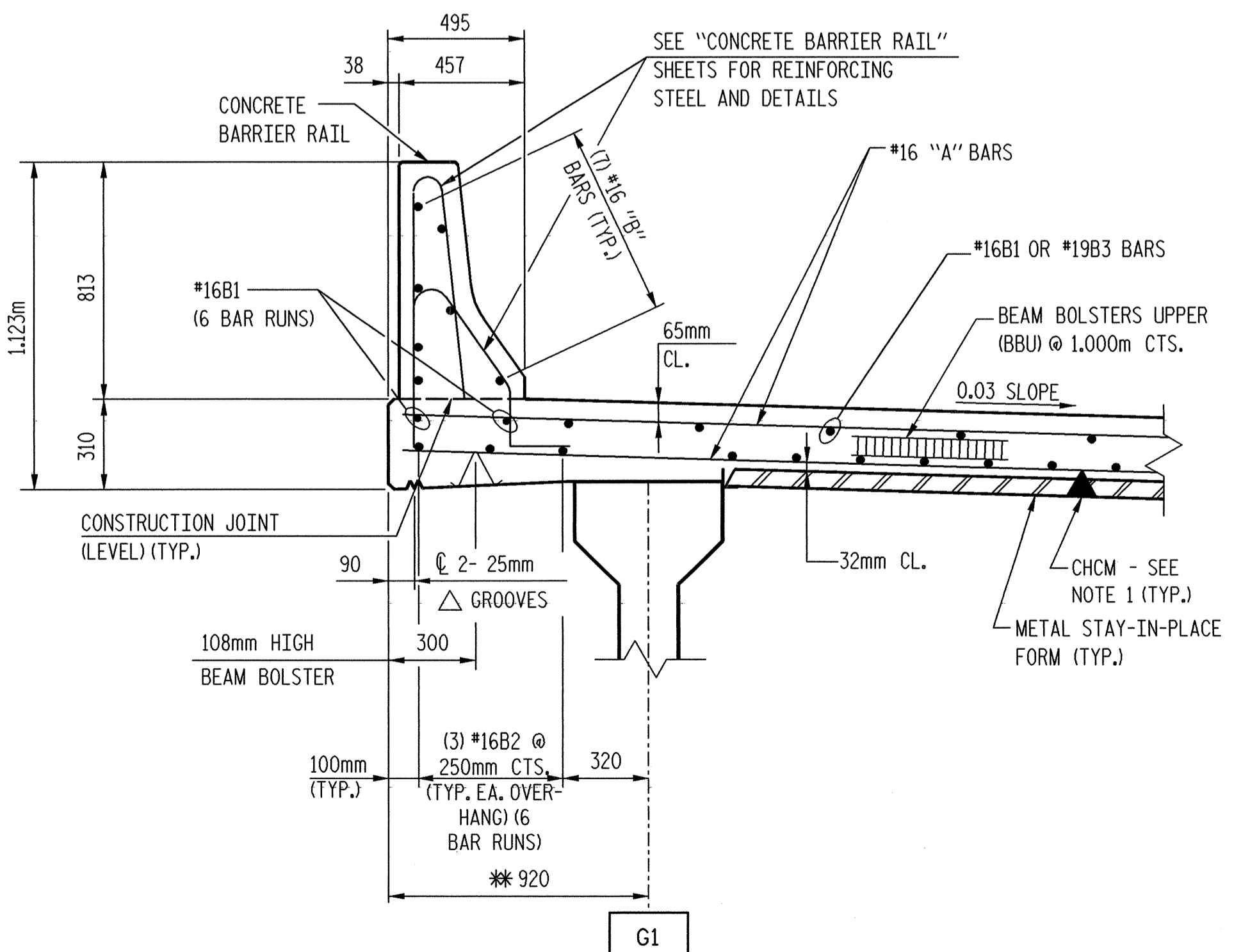
** DENOTES DIMENSIONS TO ARCS THAT ARE CONCENTRIC TO ϕ -L-, GIRDERS ARE ON CHORDS OF THE CONCENTRIC ARCS.

NOTES:

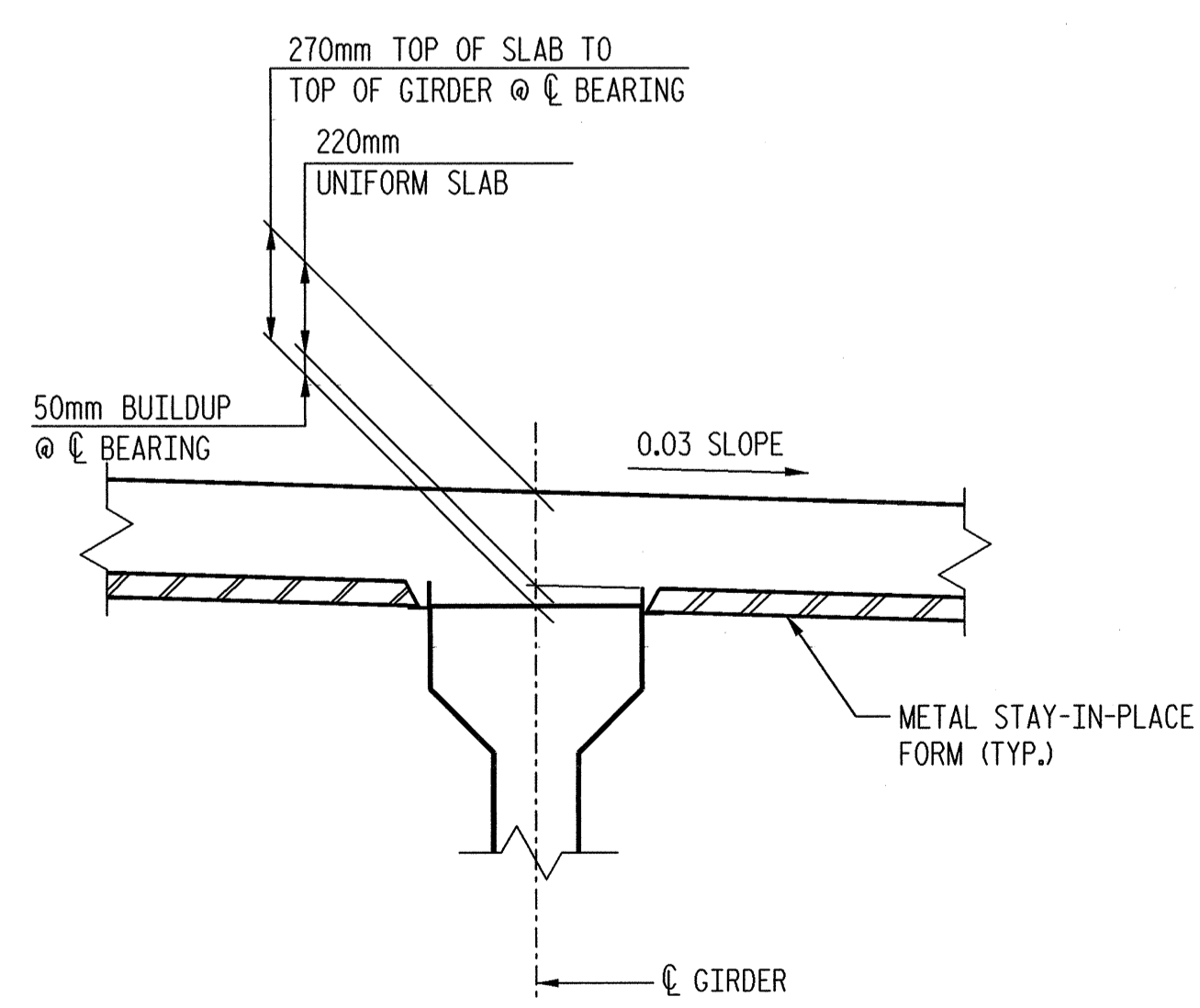
1. PROVIDE 32mm HIGH BOLSTERS UPPER AT 1.200m CTS. ATOP THE METAL STAY-IN-PLACE FORMS TO SUPPORT THE BOTTOM MAT OF "A" BARS. WHEN USING REMOVABLE FORMS, PROVIDE CONTINUOUS HIGH CHAIRS FOR METAL DECK (C.H.C.M.) AT 1.200m CTS. WITH A HEIGHT TO SUPPORT THE BOTTOM MAT OF "A" BARS A CLEAR DISTANCE OF 65mm ABOVE THE TOP OF THE REMOVABLE FORM.
2. PREVIOUSLY CAST CONCRETE IN A CONTINUOUS UNIT SHALL HAVE ATTAINED A MINIMUM COMPRESSIVE STRENGTH OF 20.7 MPa BEFORE ADDITIONAL CONCRETE IS CAST IN THE UNIT.
3. TEMPORARY STRUTS SHALL BE PLACED BETWEEN PRESTRESSED GIRDERS ADJACENT TO THE DIAPHRAGMS AND THE NUTS ON THE 31.75mm DIA. TIE RODS SHALL BE FULLY TIGHTENED BEFORE THE DIAPHRAGMS ARE CAST. STRUTS SHALL REMAIN IN PLACE THREE (3) DAYS AFTER CONCRETE IS PLACED. THE TIE RODS SHALL BE RETIGHTENED AFTER THE STRUTS HAVE BEEN REMOVED.
4. CONCRETE IN THE INTERMEDIATE DIAPHRAGMS MAY BE CLASS A IN LIEU OF CLASS AA. PAYMENT SHALL BE MADE UNDER THE UNIT CONCRETE PRICE FOR REINFORCED CONCRETE DECK SLAB.
5. REMOVABLE FORMS MAY BE USED IN LIEU OF METAL STAY-IN-PLACE FORMS IN ACCORDANCE WITH ARTICLE 420-3 OF THE STANDARD SPECIFICATIONS.



TYPICAL SECTION
(AT INTERMEDIATE DIAPHRAGMS)
(TYP. EACH GIRDER SPACE)
(FOR SECTION, SEE "TYPICAL DETAILS", SHEET 1 OF 2)

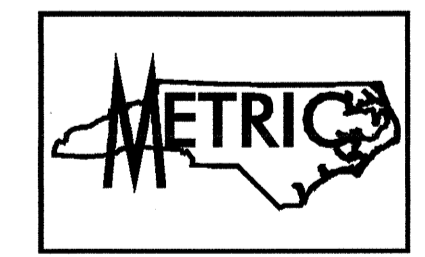


DETAIL -1



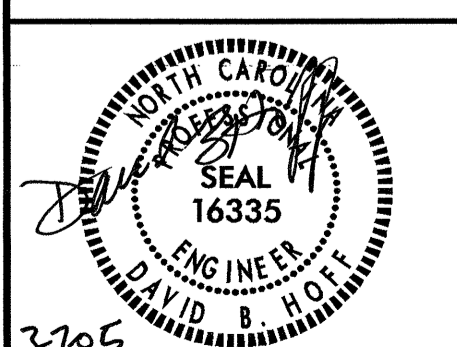
DETAIL -2

DRAWN BY: J.B. GEILE DATE: 11/01
CHECKED BY: M.L. MARLEY DATE: 12/01



PROJECT NO. R-2552AB
JOHNSTON COUNTY
STATION: 40+96.000 -L- P.O.C.

TRANSYSTEMS CORPORATION
75 Beattie Place, Suite 400
Greenville, SC 29601 (864) 234-0866



STATE OF NORTH CAROLINA
DEPARTMENT OF TRANSPORTATION
RALEIGH
SUPERSTRUCTURE
TYPICAL SECTION
AND DETAILS
(RIGHT LANE)

| REVISIONS | | | | | | SHEET NO. 5-336 |
|-----------|-----|-------|-----|-----|-------|---------------------|
| NO. | BY: | DATE: | NO. | BY: | DATE: | |
| 1 | | | 3 | | | TOTAL SHEETS 429 |
| 2 | | | 4 | | | |

DWG. NO. 7 TOTAL 64