

**NOTES**

AT ALL FIXED POINTS OF SUPPORT, NUTS FOR ANCHOR BOLTS ARE TO BE TIGHTENED FINGER TIGHT AND THEN BACKED OFF 1/2 TURN. THE THREAD OF THE NUT AND BOLT SHALL THEN BE BURRED WITH A SHARP POINTED TOOL.

THE 51mm Ø PIPE SLEEVE SHALL BE CUT FROM SCHEDULE 40 PVC PLASTIC PIPE. THE PVC PLASTIC PIPE SHALL MEET THE REQUIREMENTS OF ASTM D1785.

STEEL SOLE PLATES, ANCHOR BOLTS, NUTS, AND WASHERS SHALL BE GALVANIZED IN ACCORDANCE WITH THE STANDARD SPECIFICATIONS.

PRIOR TO WELDING, GRIND THE GALVANIZED SURFACE OF THE PORTION OF THE EMBEDDED PLATE AND SOLE PLATE THAT ARE TO BE WELDED. AFTER WELDING, DAMAGED GALVANIZED SURFACES SHALL BE REPAIRED IN ACCORDANCE WITH THE STANDARD SPECIFICATIONS.

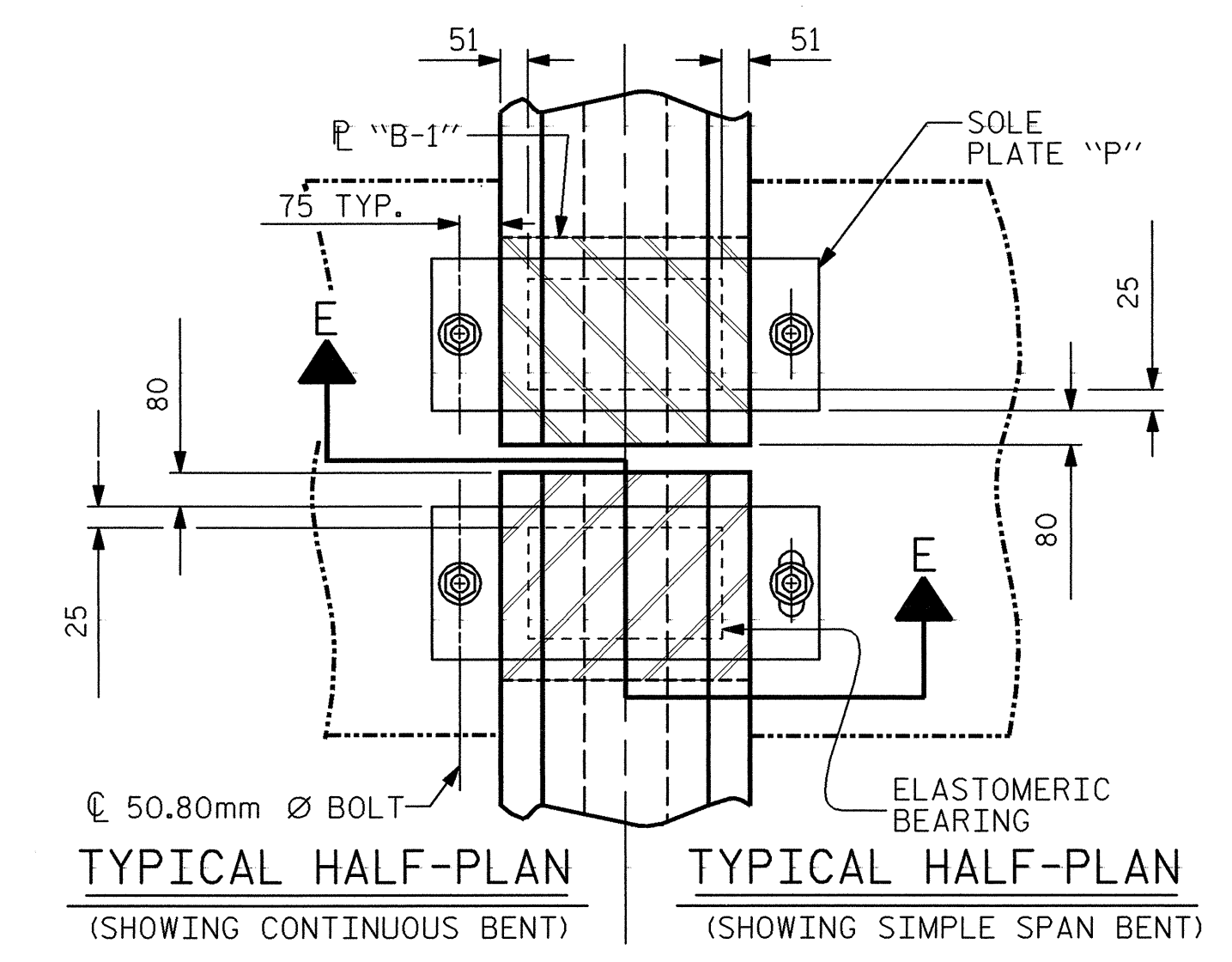
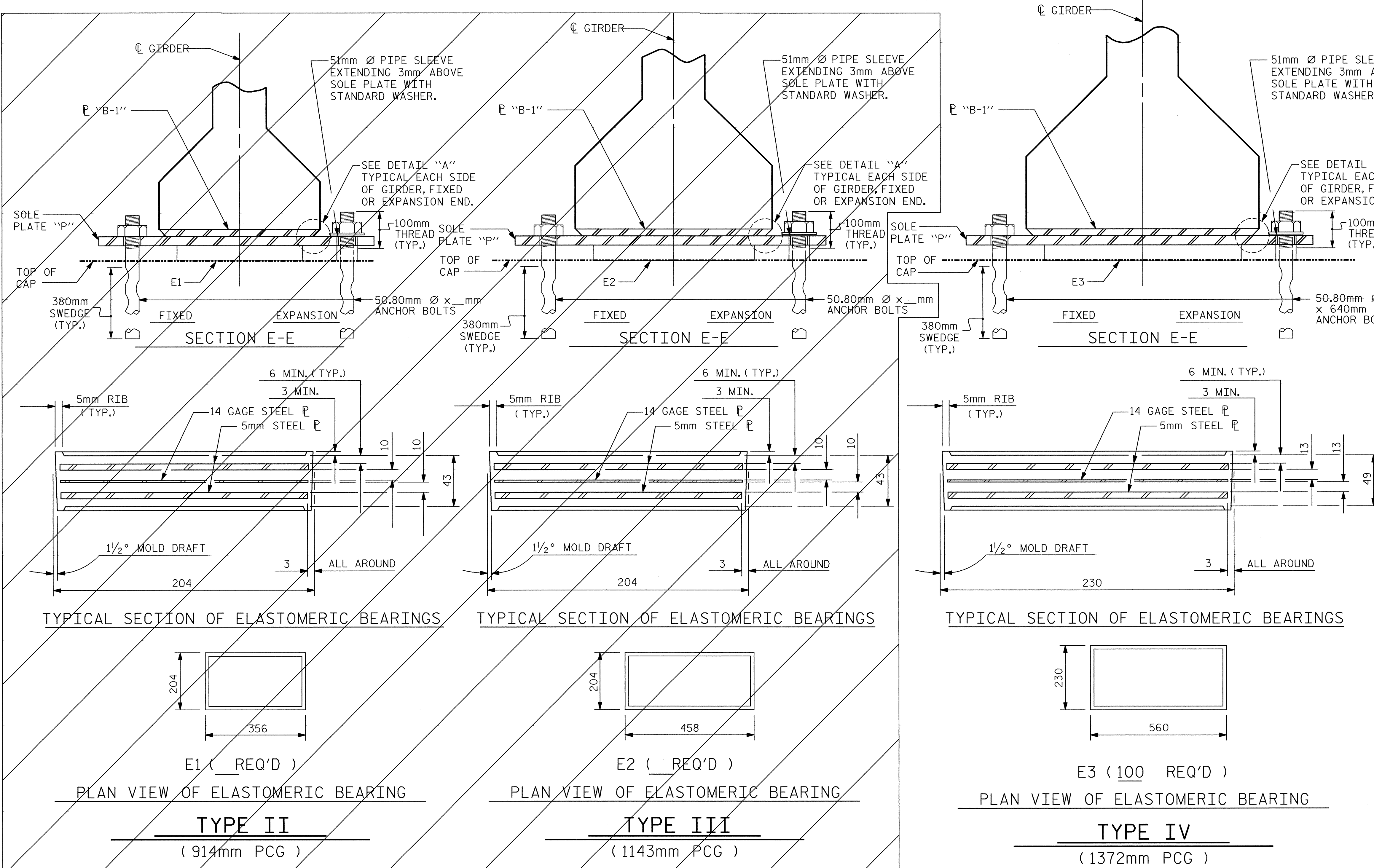
WHEN WELDING THE SOLE PLATE TO THE EMBEDDED PLATE IN THE GIRDER, USE TEMPERATURE INDICATING WAX PENS, OR OTHER SUITABLE MEANS, TO ENSURE THAT THE TEMPERATURE OF THE SOLE PLATE DOES NOT EXCEED 149°C. TEMPERATURES ABOVE THIS MAY DAMAGE THE ELASTOMER.

SOLE PLATE "P", BOLTS, NUTS, WASHERS, AND PIPE SLEEVE SHALL BE INCLUDED IN THE PAY ITEM FOR PRESTRESSED CONCRETE GIRDERS.

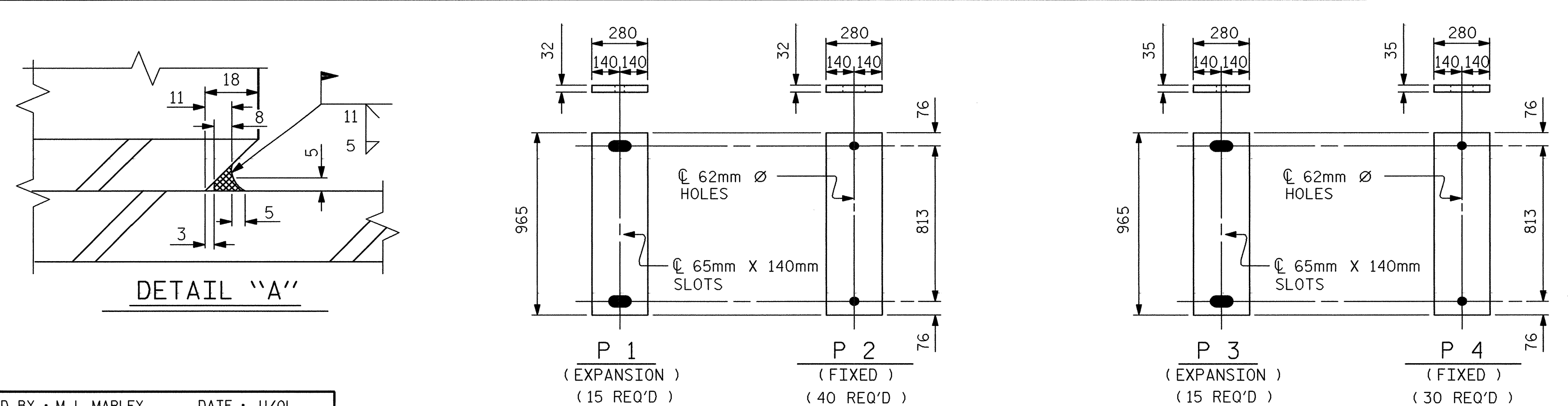
ANCHOR BOLTS SHALL MEET THE REQUIREMENTS OF ASTM A449. NUTS SHALL MEET THE REQUIREMENTS OF AASHTO M291M-12 OR AASHTO M292M-2H. WASHERS SHALL MEET THE REQUIREMENTS OF AASHTO M293M. SHOP DRAWINGS ARE NOT REQUIRED FOR ANCHOR BOLTS, NUTS AND WASHERS. SHOP INSPECTION IS REQUIRED.

ALL SURFACES OF BEARING PLATES SHALL BE SMOOTH AND STRAIGHT.

FOR ELASTOMERIC BEARINGS, SEE SPECIAL PROVISIONS.

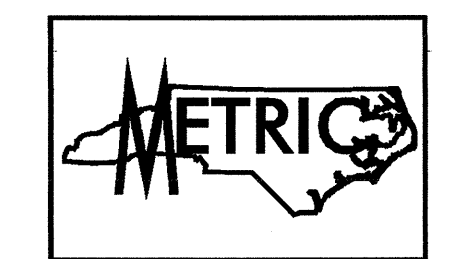


— LOAD RATINGS —	
	MAX.D.L.+L.L.
914mm PCG -TYPE II	366 kN
1143mm PCG -TYPE III	512 kN
1372mm PCG -TYPE IV	611 kN

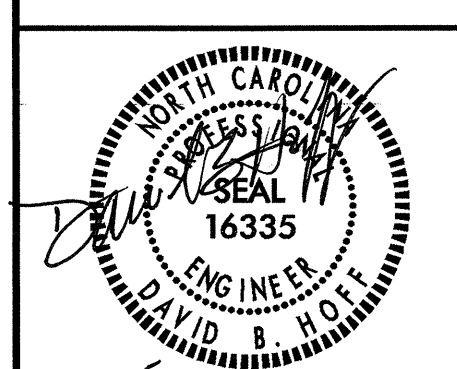


**SOLE PLATE DETAILS ("P")**

PROJECT NO. R-2552AB  
 JOHNSTON COUNTY  
 STATION: 40+96.000 -L- P.O.C.



TRANSYSTEMS CORPORATION  
 75 Beattie Place, Suite 400  
 Greenville, SC 29601 (864) 234-0866



STATE OF NORTH CAROLINA  
 DEPARTMENT OF TRANSPORTATION  
 RALEIGH  
**STANDARD ELASTOMERIC BEARING DETAILS**  
 PRESTRESSED CONCRETE GIRDER SUPERSTRUCTURE (RIGHT LANE)

REVISIONS				SHEET NO.
NO.	BY:	DATE:	NO.	DATE:
1			3	
2			4	

3-7-05  
 DWG. NO. 24  
 TOTAL 64

TOTAL SHEETS 429  
 STD. NO. EB35M

g:\V04\0125\Bridg\Sheet\Right (EBL)\Final\Eb35m(ebl).dgn  
 3/4/2005 1:16:51 PM

ASSEMBLED BY: M. L. MARLEY DATE: 11/01  
 CHECKED BY: D. H. HOFF DATE: 1/02  
 DRAWN BY: WJH 8/89 REV. 7/17/98 RWW/LES  
 CHECKED BY: CRK 8/89 REV. 8/16/99 RWW/LES  
 REV. 10/17/00 RWW/LES