

SUPERSTRUCTURE REINFORCING STEEL LENGTHS ARE BASED ON THE FOLLOWING MINIMUM SPLICE LENGTHS

BAR SIZE	SUPERSTRUCTURE EXCEPT APPROACH SLABS, PARAPET, AND BARRIER RAIL		APPROACH SLABS		PARAPET AND BARRIER RAIL
	EPOXY COATED	UNCOATED	EPOXY COATED	UNCOATED	
#13	610	540	610	540	840
#16	770	660	770	660	1050
#19	920	790	1190	790	1330
#22	1580	1060			
#25	2080	1390			

**GROOVING BRIDGE FLOORS**

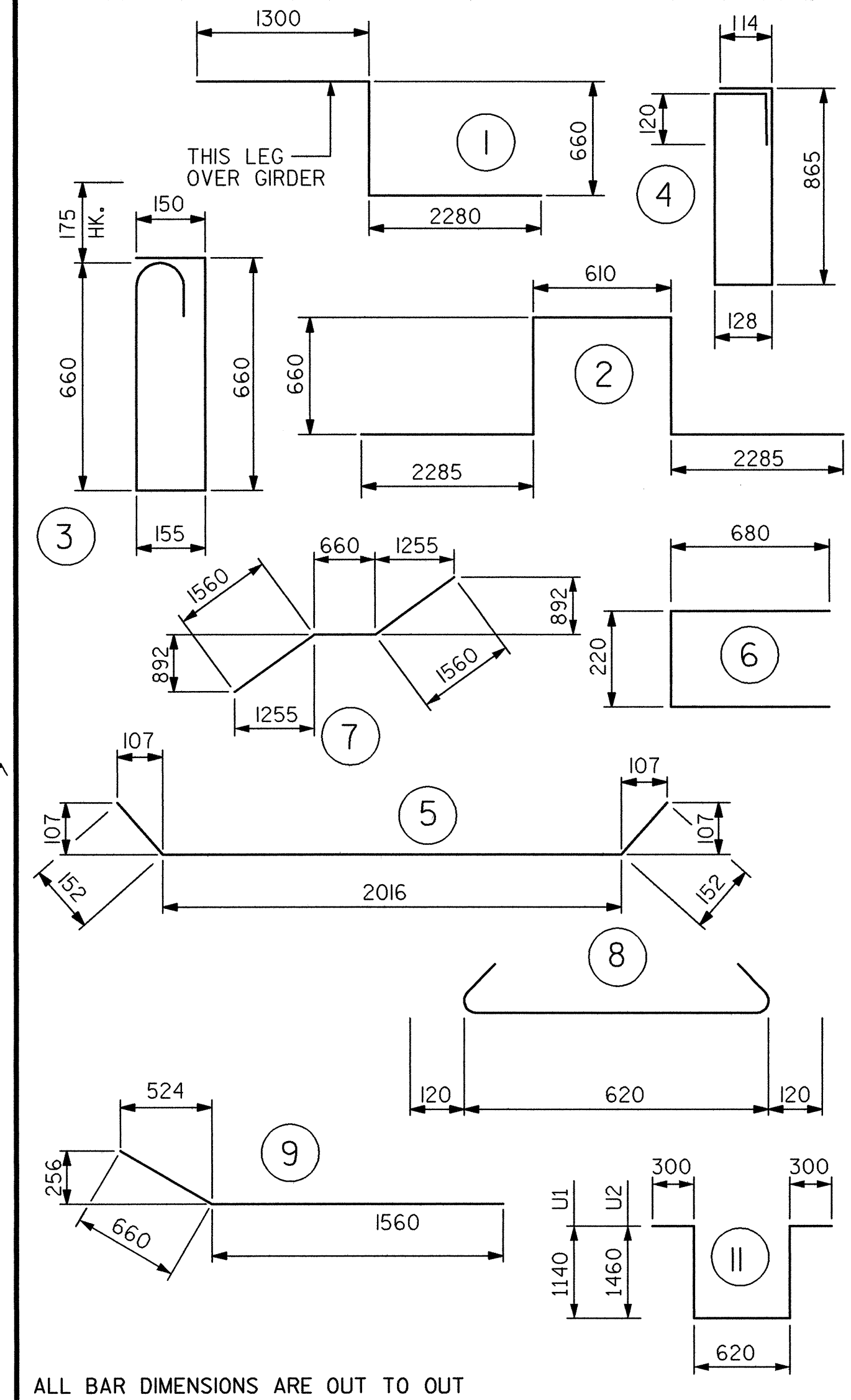
APPROACH SLABS	167.0 SQ.METER
BRIDGE DECK TOTAL	2537.0 SQ.METER
TOTAL	2704.0 SQ.METER

**SUPERSTRUCTURE BILL OF MATERIAL**

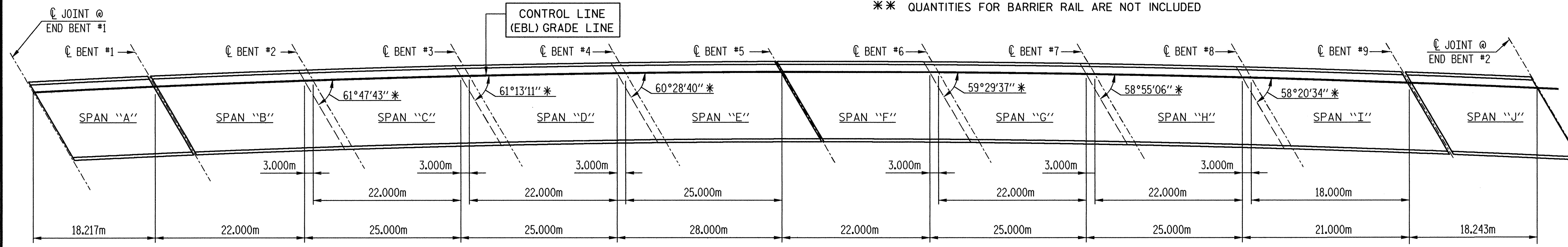
		CLASS AA CONCRETE ( CU. METER )	REINFORCING STEEL ( kg )	EPOXY COATED REINFORCING STEEL ( kg )
SPANS "A" - "J"			51846	56225
UNIT "A"	POUR 1	63.0		
UNIT "B, C, D, E"	POUR 1	72.4		
	POUR 2	91.4		
	POUR 3	91.5		
	POUR 4	103.0		
UNIT "F, G, H, I"	POUR 1	72.5		
	POUR 2	91.6		
	POUR 3	91.7		
	POUR 4	81.5		
UNIT "J"	POUR 1	63.4		
TOTALS **		822.0	51846	56225

\*\* QUANTITIES FOR BARRIER RAIL ARE NOT INCLUDED

**BAR TYPES**



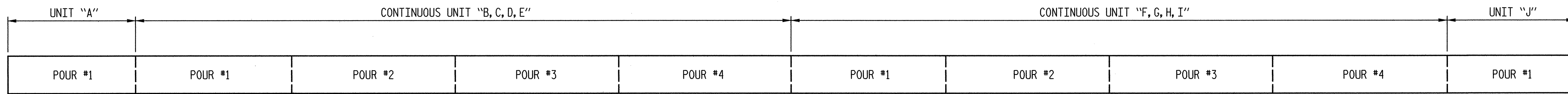
ALL BAR DIMENSIONS ARE OUT TO OUT



**LOCATION OF JOINT**

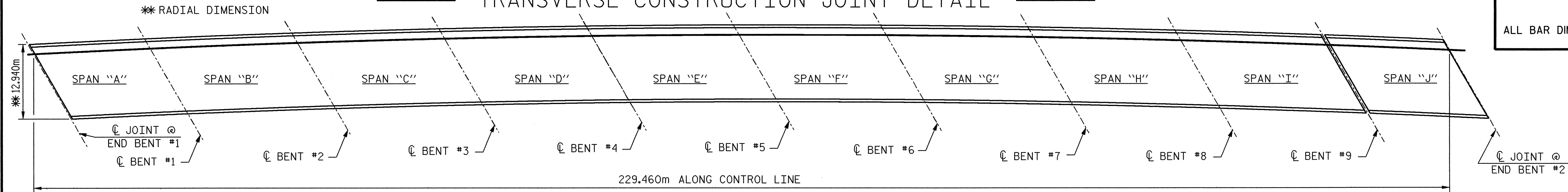
\* TANGENT TO CURVE

NOTE: ALL DIMENSIONS ARE ARC LENGTHS MEASURED ALONG CONTROL LINE.

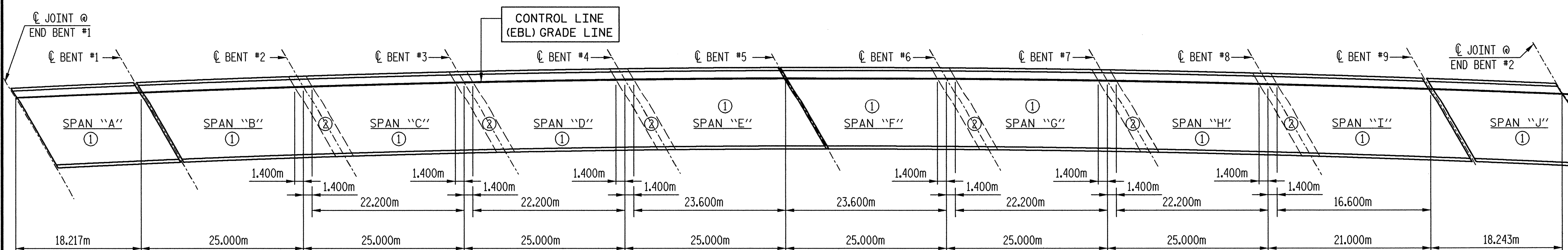


**POUR SEQUENCE AND DIRECTION**

**TRANSVERSE CONSTRUCTION JOINT DETAIL**



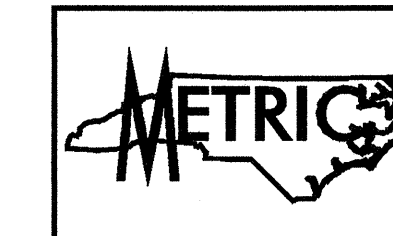
**LAYOUT FOR COMPUTING AREA OF REINFORCED CONCRETE DECK SLAB (SQ. METER = 2980.3)**



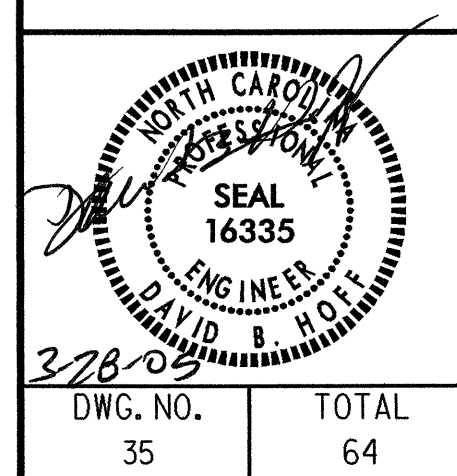
**OPTIONAL POURING SEQUENCE**

POUR 2 CANNOT BE POURED UNTIL POUR 1 HAS REACHED A MINIMUM 20.7 MPa.

PROJECT NO. R-252AB  
JOHNSTON COUNTY  
STATION: 40+96.000 -L- P.O.C.  
SHEET 3 OF 3



TRANSYSTEMS CORPORATION  
75 Beattie Plaza, Suite 400  
Greenville, SC 29601 (864) 234-0866



STATE OF NORTH CAROLINA  
DEPARTMENT OF TRANSPORTATION  
RALEIGH  
STANDARD  
SUPERSTRUCTURE  
BILL OF MATERIAL  
(RIGHT LANE)

REVISIONS						SHEET NO.
NO.	BY:	DATE:	NO.	BY:	DATE:	
1			3			5-366
2			4			TOTAL SHEETS 429

ASSEMBLED BY: M. L. MARLEY DATE: 10/01  
CHECKED BY: J. B. GEILE DATE: 11/01  
DRAWN BY: JMB 5/87 REV. 5/16/97 EEM/RGW  
CHECKED BY: SJD 9/87

g:\G04\0125\Brdge\Struc\EBL\Final\Bom3\eb1.dgn 3/28/2005 3:17:54 PM