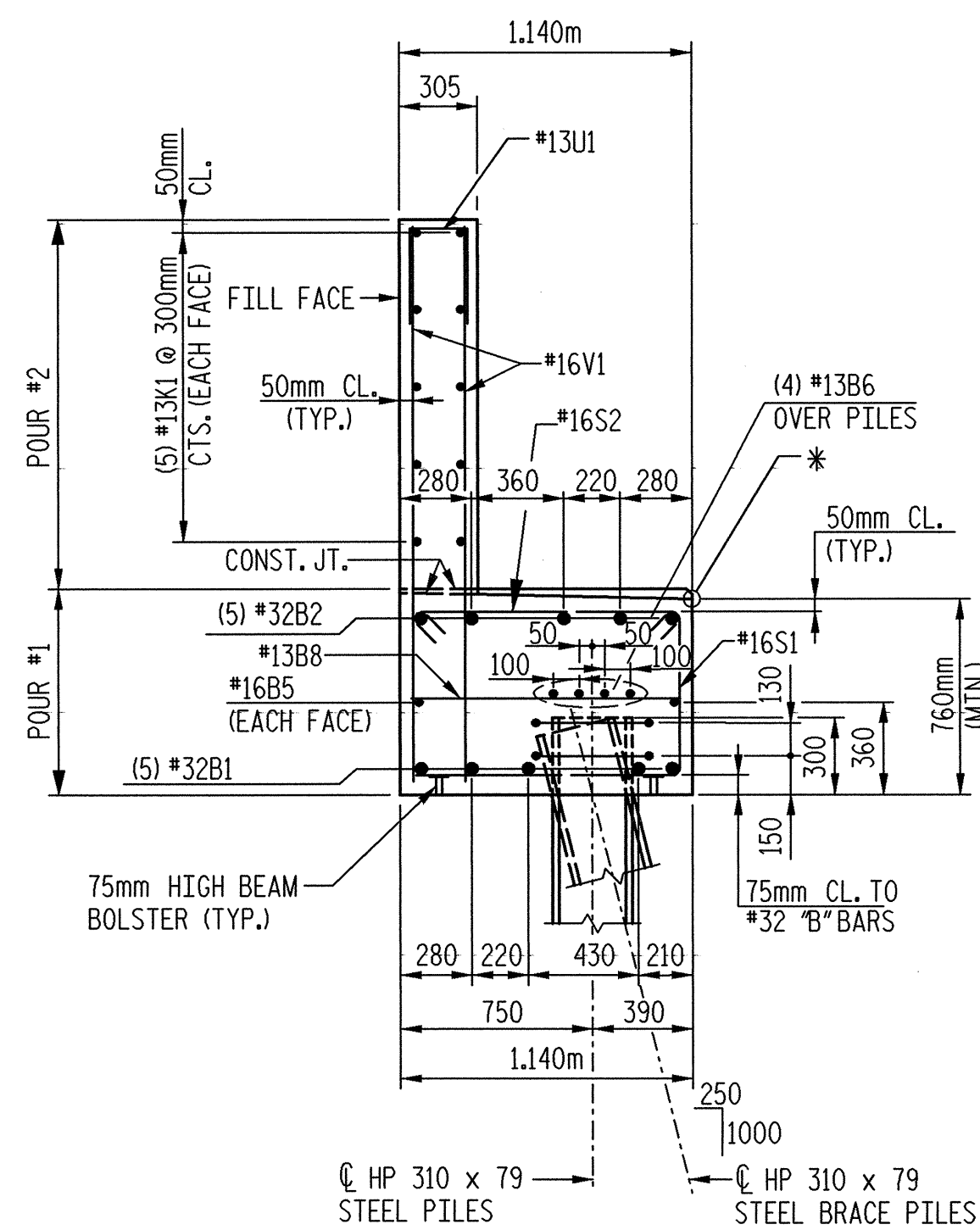


BAGGED STONE AND PIPE SHALL BE PLACED IMMEDIATELY AFTER COMPLETION OF END BENT EXCAVATION. PIPE MAY BE EITHER CONCRETE, CORRUGATED STEEL, CORRUGATED ALUMINUM ALLOY, OR CORRUGATED PLASTIC. PERFORATED PIPE WILL NOT BE ALLOWED.

BAGGED STONE SHALL REMAIN IN PLACE UNTIL THE ENGINEER DIRECTS THAT IT BE REMOVED. THE CONTRACTOR SHALL REMOVE AND DISPOSE OF SILT ACCUMULATIONS AT BAGGED STONE WHEN SO DIRECTED BY THE ENGINEER. BAGS SHALL BE REMOVED AND REPLACED WHENEVER THE ENGINEER DETERMINES THAT THEY HAVE DETERIORATED AND LOST THEIR EFFECTIVENESS.

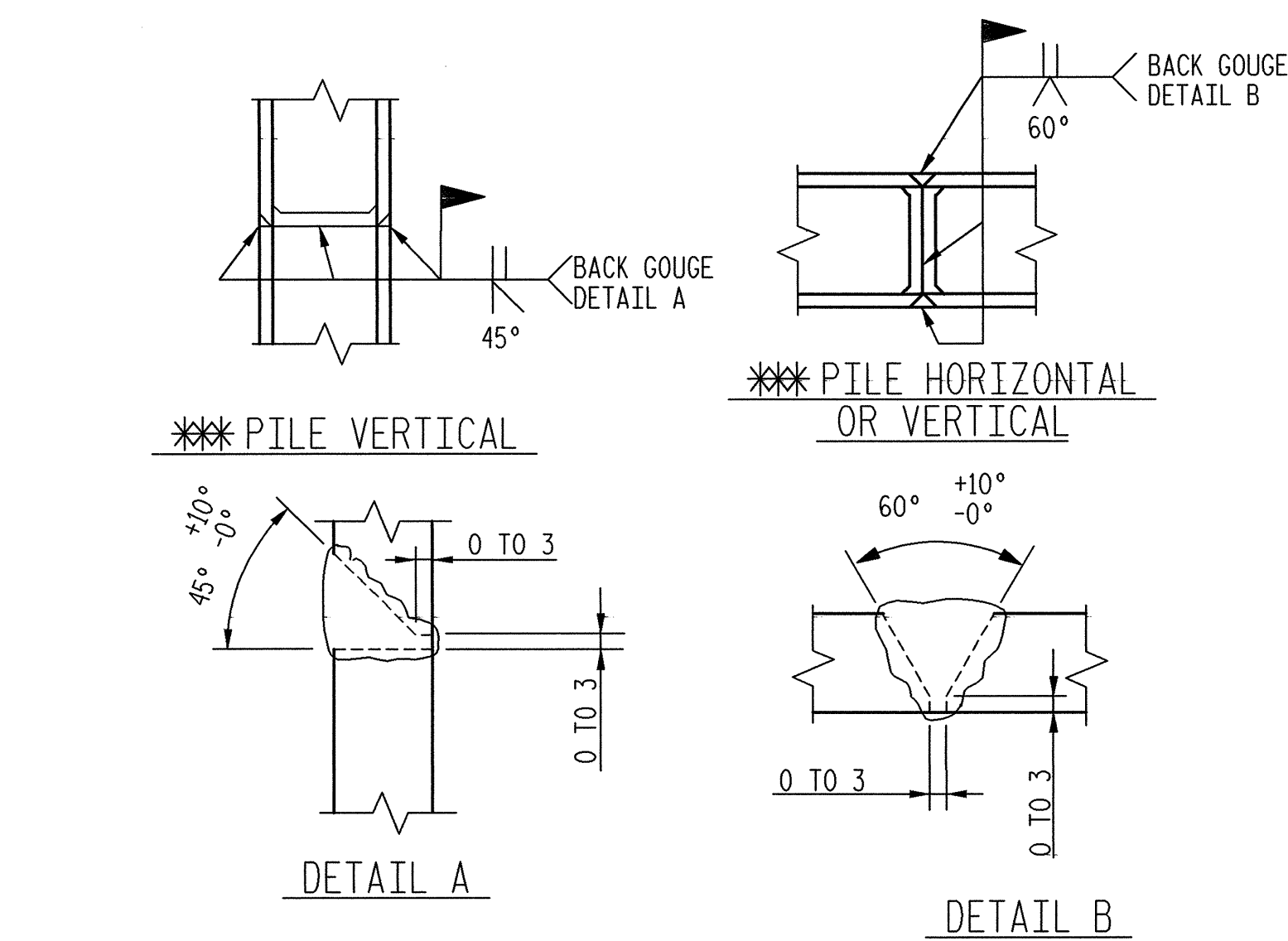
NO SEPARATE PAYMENT WILL BE MADE FOR THIS WORK AND THE ENTIRE COST OF THIS WORK SHALL BE INCLUDED IN THE UNIT CONTRACT PRICE BID FOR THE SEVERAL PAY ITEMS.

TEMPORARY DRAINAGE AT END BENT



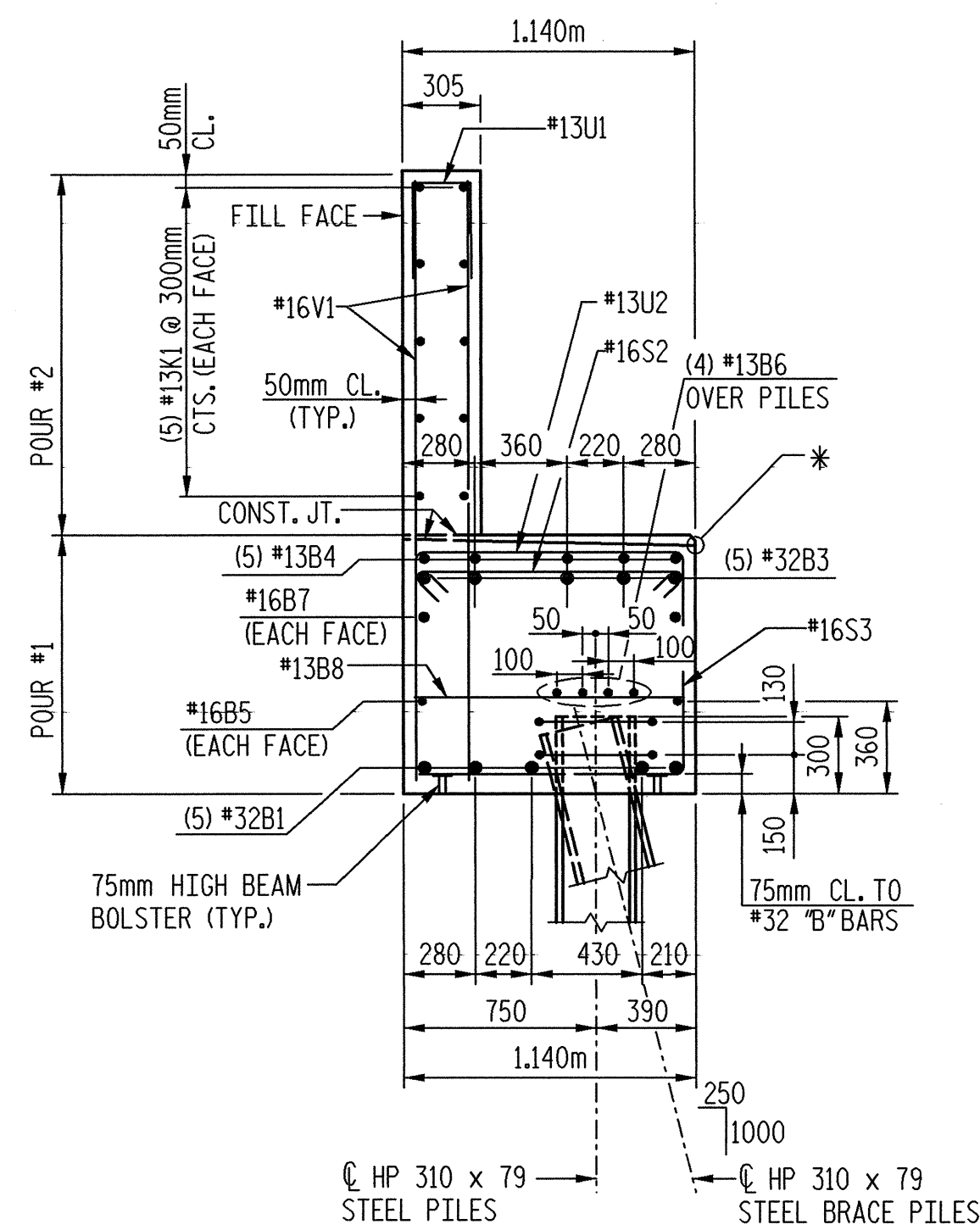
SECTION A-A

* ELEVATIONS BETWEEN BRIDGE SEAT BUILDUPS ARE SHOWN AT THIS POINT



*** POSITION OF PILE DURING WELDING.

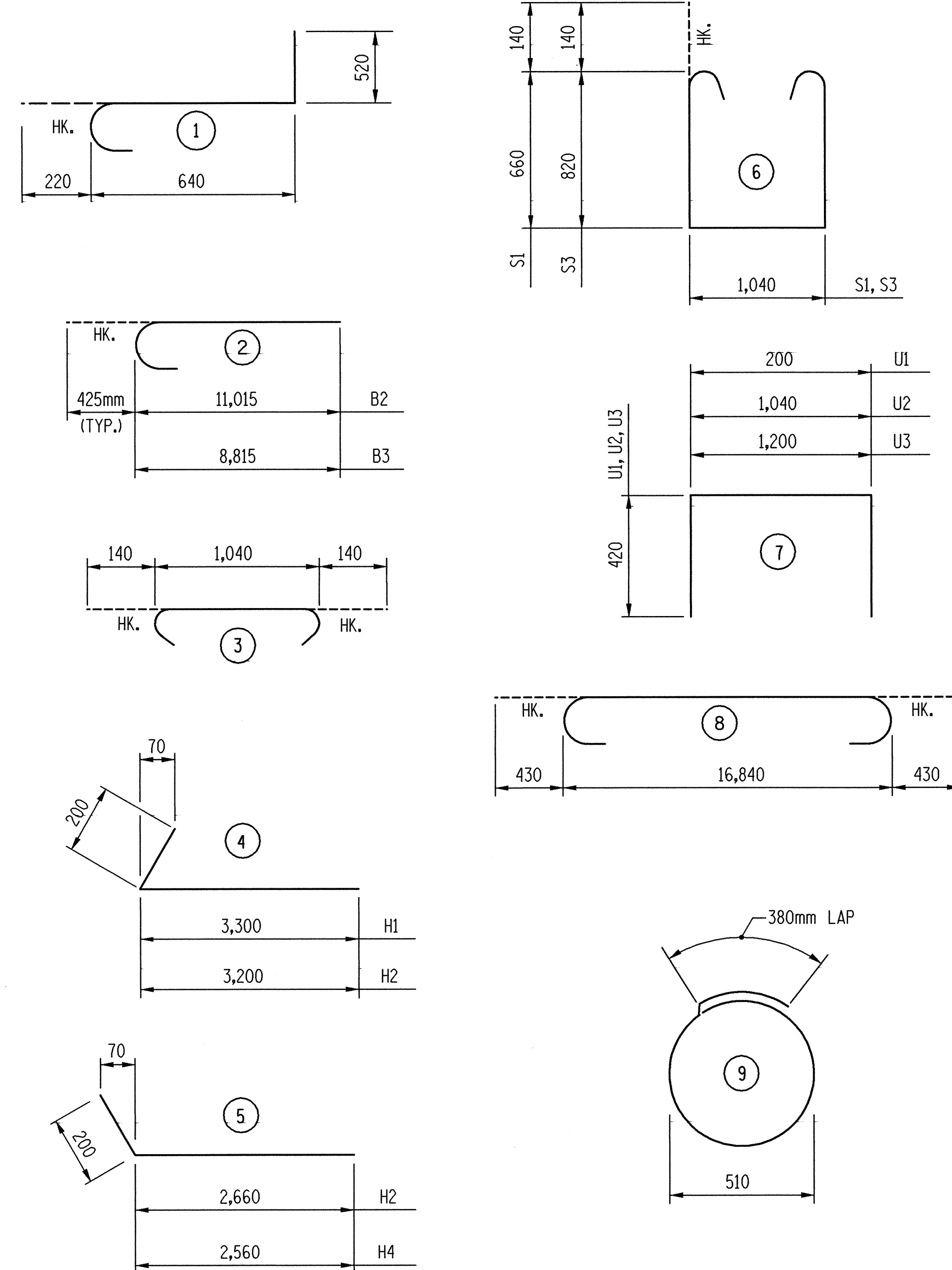
PILE SPLICE DETAILS



SECTION B-B

* ELEVATIONS BETWEEN BRIDGE SEAT BUILDUPS ARE SHOWN AT THIS POINT

BAR TYPES



ALL BAR DIMENSIONS ARE OUT TO OUT.

BILL OF MATERIAL

END BENT 1

BAR	NO.	SIZE	TYPE	LENGTH	WEIGHT
B1	5	#32	8	17,700	567
B2	5	#32	2	11,400	365
B3	5	#32	2	9,240	296
B4	5	#13	STR.	2,560	13
B5	2	#16	STR.	16,840	52
B6	8	#13	STR.	8,800	70
B7	2	#16	STR.	6,380	20
B8	17	#13	STR.	1,040	14
H1	10	#16	5	3,500	54
H2	10	#16	5	3,400	53
H3	9	#16	4	2,860	40
H4	9	#16	4	2,760	39
K1	20	#13	STR.	8,800	175
S1	25	#16	6	2,640	102
S2	53	#16	3	1,320	109
S3	28	#16	6	2,960	129
S4	16	#13	9	1,980	31
U1	47	#13	7	1,040	49
U2	31	#13	7	1,880	58
U3	25	#13	7	2,040	51
V1	94	#16	STR.	2,040	298
V2	30	#16	STR.	2,720	127
V3	24	#16	STR.	2,400	89

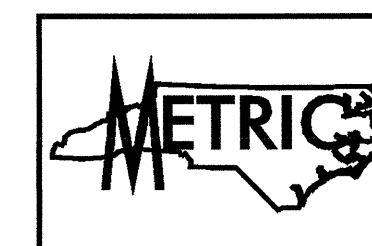
END BENT #1 TOTAL QUANTITIES

HP310 x 79 PILES	No: 8	103.2 m
REINFORCING STEEL		2801 kg.

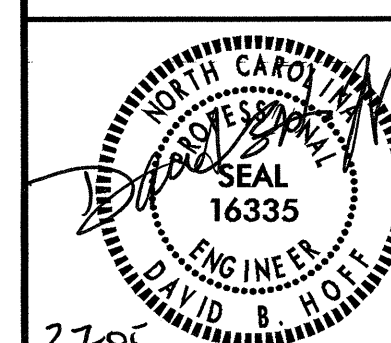
CLASS "A" CONCRETE BREAKDOWN BY POUR

POUR 1 (CAP & WINGS)	19.2 m ³
POUR 2 (BACKWALL & WINGS)	10.0 m ³
TOTAL CLASS "A" CONCRETE	29.2 m³

PROJECT NO. **R-2552AB**
JOHNSTON COUNTY
 STATION: **40+96.000 -L- P.O.C.**
 SHEET 3 OF 3



TRANSYSTEMS CORPORATION
 75 Beattie Place, Suite 400
 Greenville, SC 29601 (864) 234-0866



STATE OF NORTH CAROLINA
DEPARTMENT OF TRANSPORTATION
 RALEIGH

**SUBSTRUCTURE
 END BENT #1
 DETAILS
 (RIGHT LANE)**

REVISIONS

NO.	BY:	DATE:	NO.	BY:	DATE:
1			3		
2			4		

SHEET NO.
5-369
 TOTAL SHEETS
429

DRAWN BY: **J. B. GEILE** DATE: **11/01**
 CHECKED BY: **D. B. HOFF** DATE: **12/01**