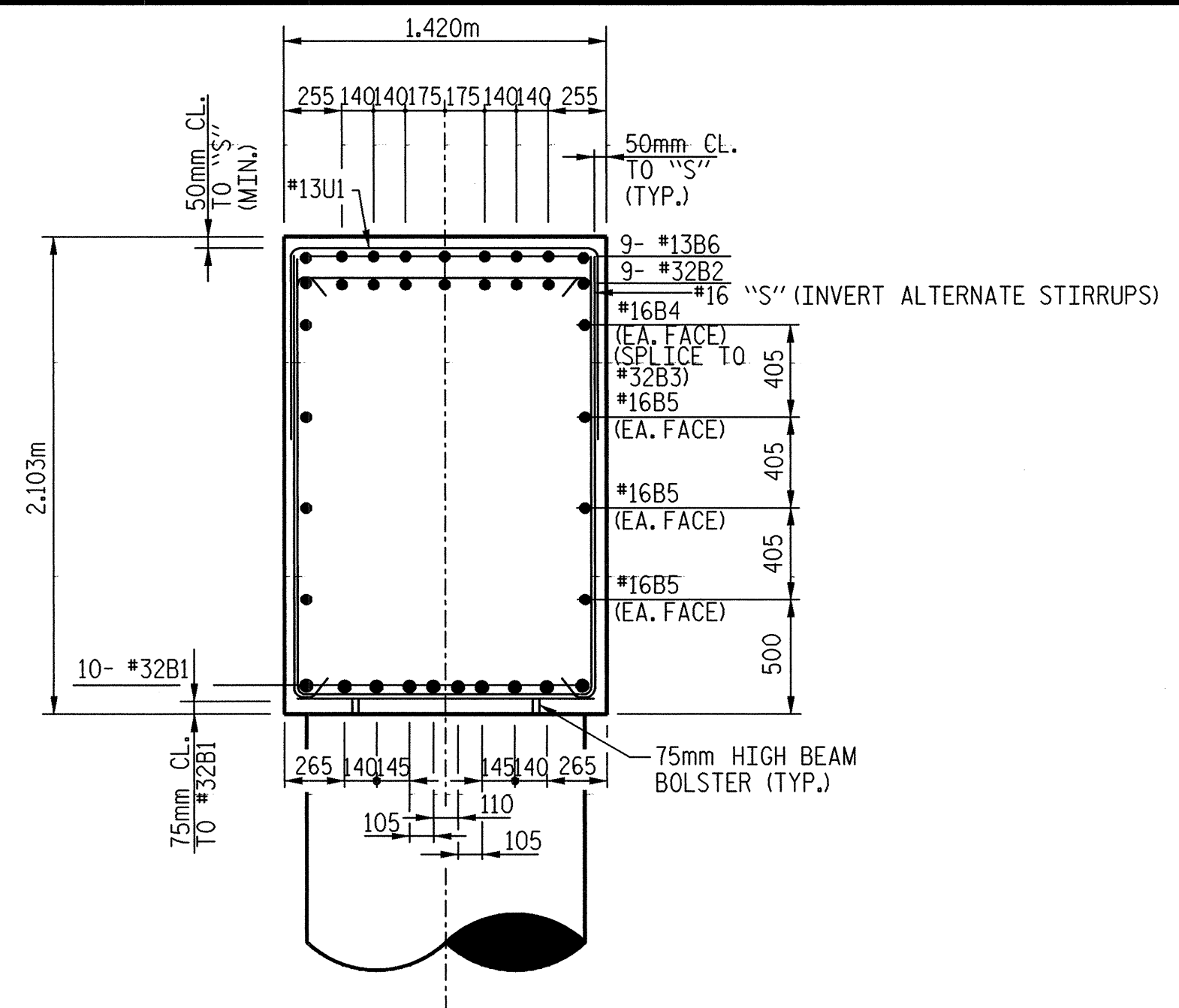
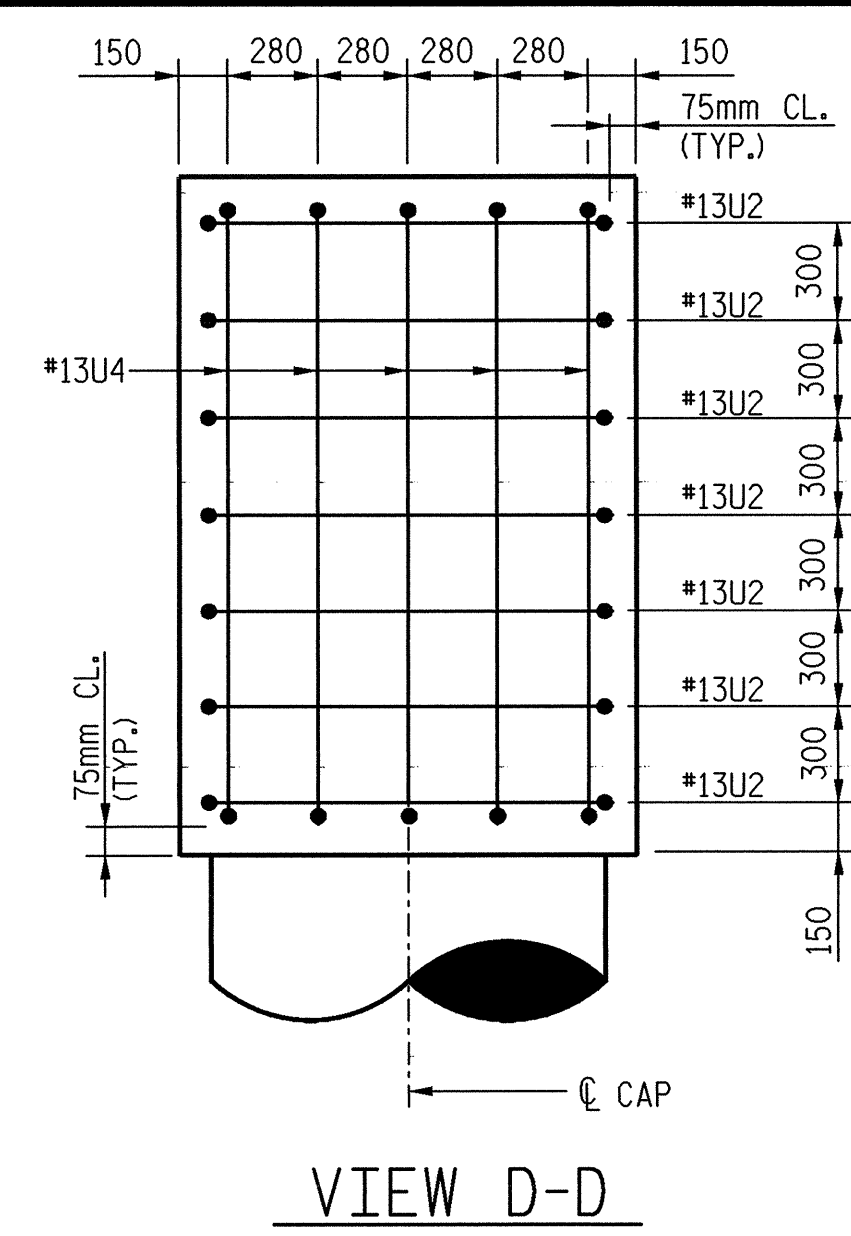


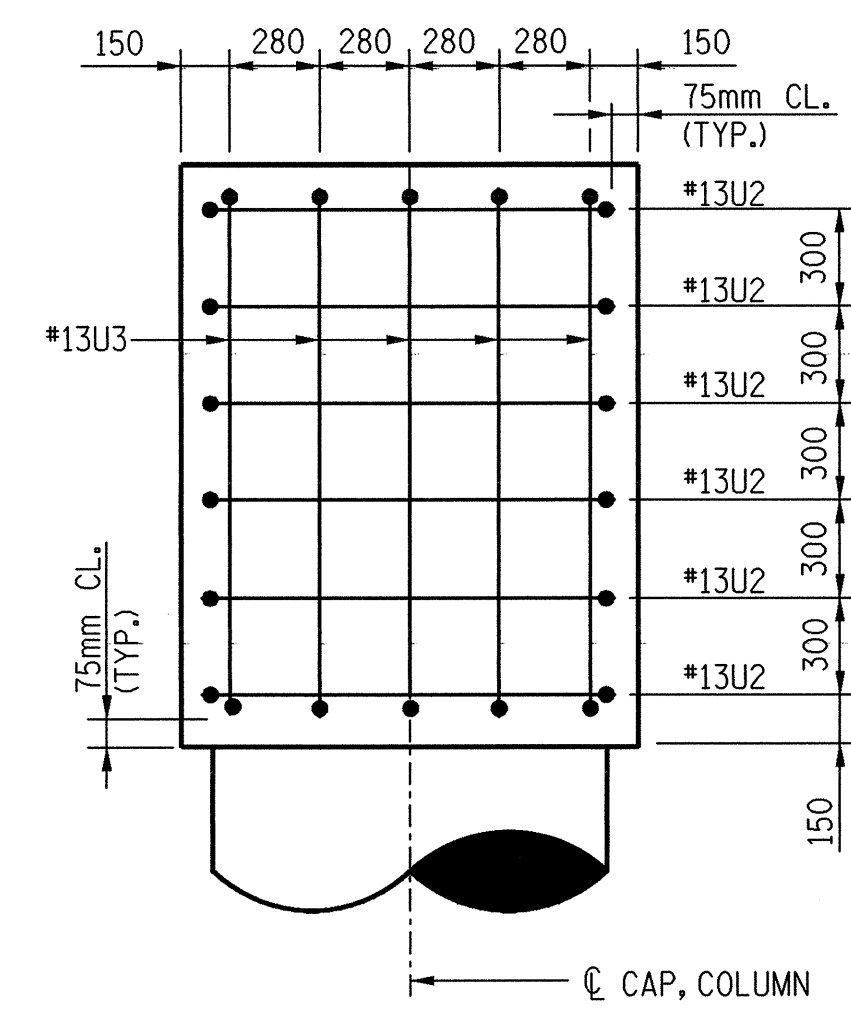
SECTION A-A



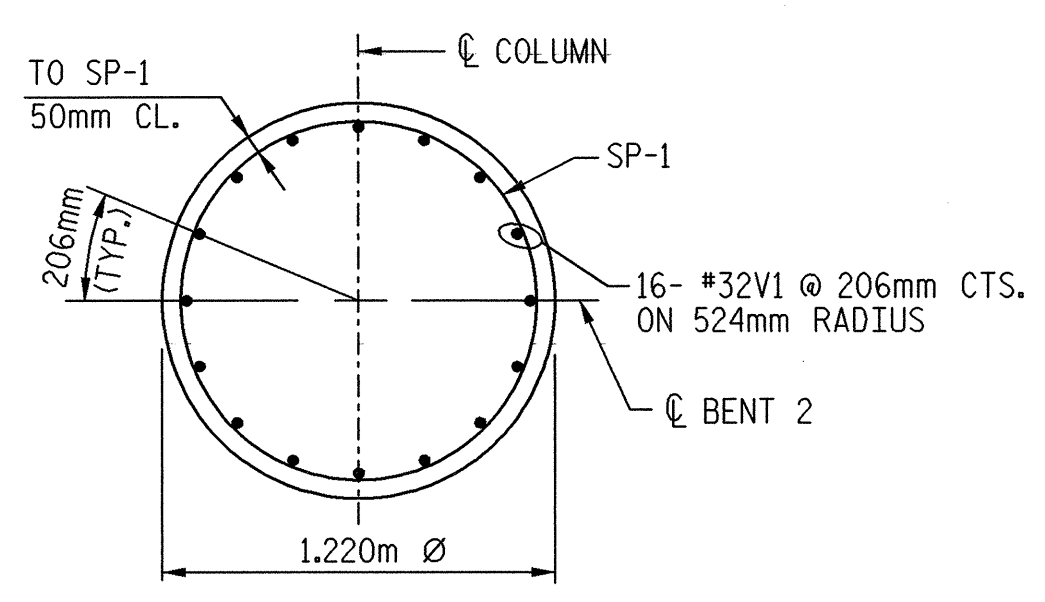
SECTION B-B



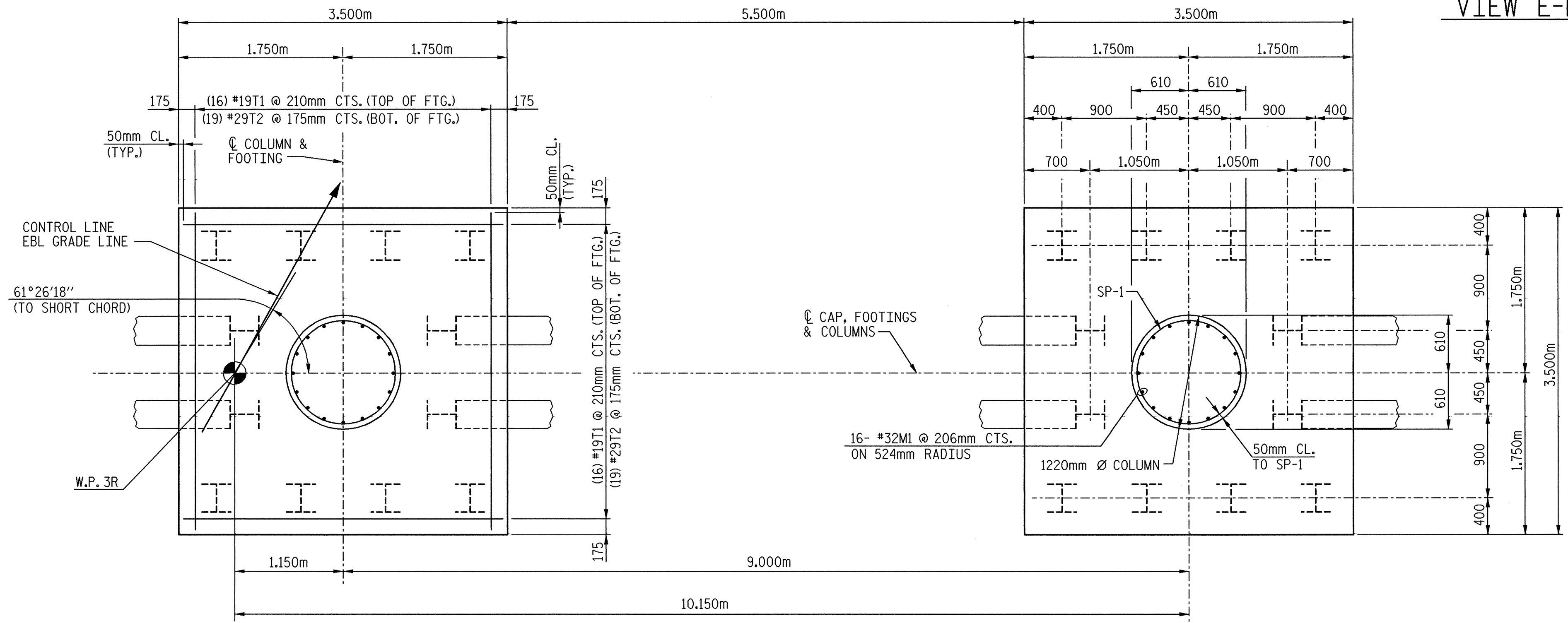
VIEW D-D



VIEW E-E

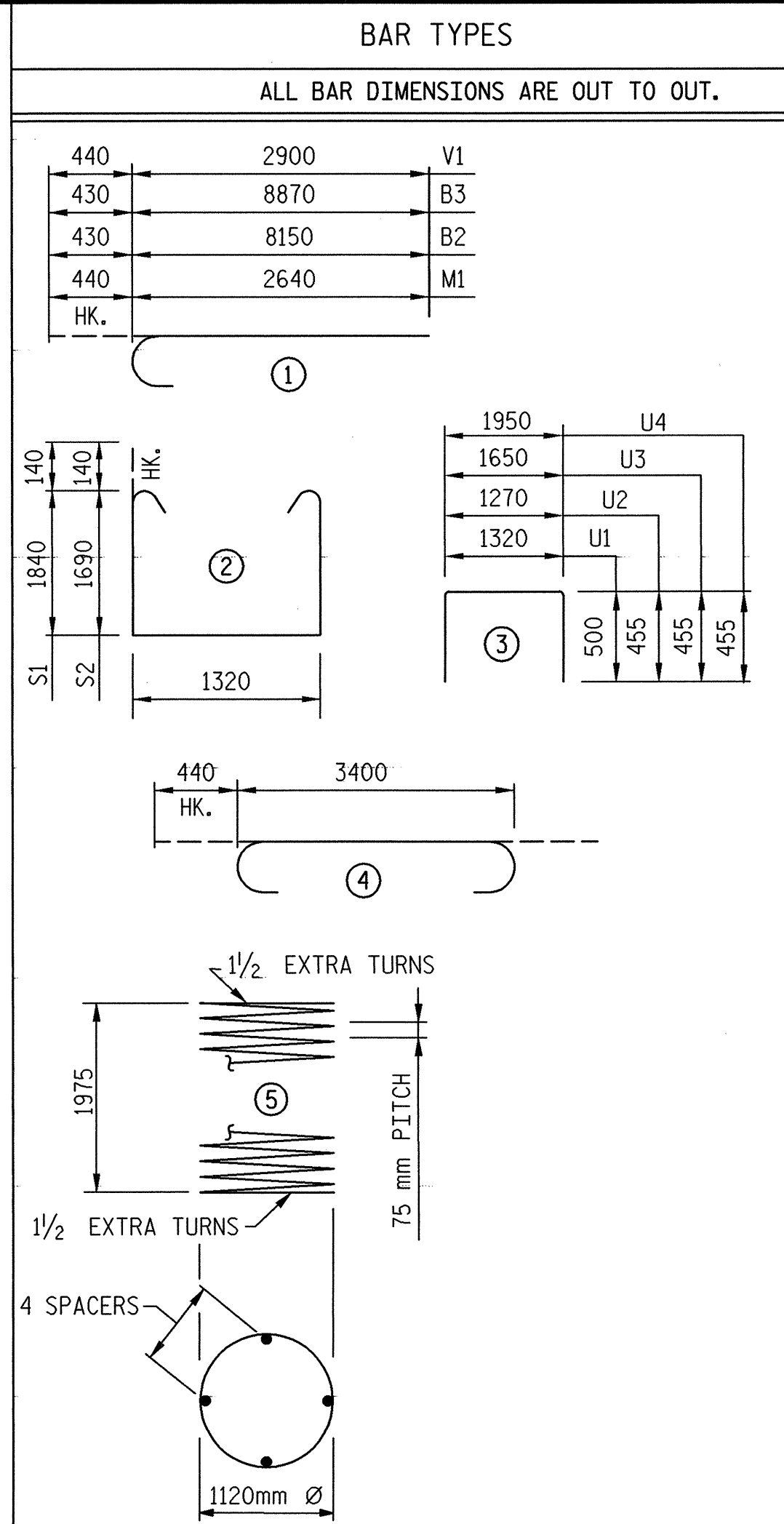


SECTION C-C



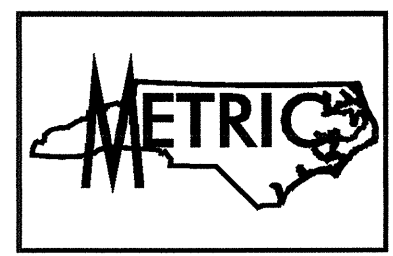
FOOTING PLAN

DETAILS SHOWN ARE TYPICAL FOR ALL FOOTINGS & COLUMNS UNLESS OTHERWISE NOTED



BAR TYPES		BILL OF MATERIALS				
ALL BAR DIMENSIONS ARE OUT TO OUT.						
BENT #2						
BAR	NO.	SIZE	TYPE	LENGTH	WEIGHT	
B1	10	#32	STR	14600	935	
B2	9	#32	1	8580	495	
B3	9	#32	1	9300	536	
B4	2	#16	STR.	6660	21	
B5	6	#16	STR.	14600	136	
B6	9	#13	STR.	1840	16	
M1	32	#32	1	3080	631	
S1	31	#16	2	5280	254	
S2	26	#16	2	4980	201	
T1	32	#19	STR.	3400	243	
T2	38	#29	4	4280	823	
U1	47	#13	3	2320	108	
U2	13	#13	3	2180	28	
U3	5	#13	3	2560	13	
U4	5	#13	3	2860	14	
V1	32	#32	1	3340	684	
SPIRAL COLUMN REINFORCING STEEL						
SP-1	2	*	5	102040	203	
BENT #2 TOTAL QUANTITIES						
HP310 x 79 PILES				No: 24	204.0 m	
GALVANIZING STEEL PILES				LUMP SUM		
REINFORCING STEEL				5138 kg.		
SPIRAL COLUMN REINFORCING STEEL				203 kg.		
CLASS "A" CONCRETE BREAKDOWN BY POUR						
POUR 1 (FOOTINGS)				27.0 m <sup>3</sup>		
POUR 2 (COLUMNS)				4.4 m <sup>3</sup>		
POUR 3 (CAPS)				40.4 m <sup>3</sup>		
TOTAL CLASS "A" CONCRETE				71.8 m <sup>3</sup>		

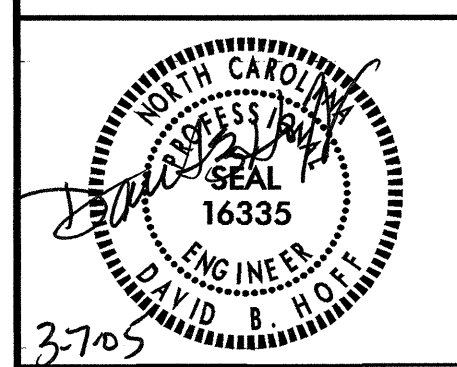
\* THE SP-1 SPIRAL REINFORCING STEEL SHALL BE W20 OR D-20 COLD DRAWN WIRE OR #13 PLAIN OR DEFORMED BAR.



PROJECT NO. R-2552AB  
JOHNSTON COUNTY  
STATION: 40+96.00 -L- P.O.C.

SHEET 2 OF 2

TRANSYSTEMS CORPORATION  
75 Beattie Place, Suite 400  
Greenville, SC 29601 (864) 234-0866



STATE OF NORTH CAROLINA  
DEPARTMENT OF TRANSPORTATION  
RALEIGH  
SUBSTRUCTURE  
BENT #2  
DETAILS  
(RIGHT LANE)

REVISIONS						SHEET NO.
NO.	BY:	DATE:	NO.	BY:	DATE:	
1			3			5-373
2			4			TOTAL SHEETS 429

DRAWN BY: J. C. PENDERGRAFT DATE: 8/01  
CHECKED BY: J. T. DIFEE DATE: 2/02

g:\04\04125\B-1.dgn\State\Right (EBL)\Form\Bent2(ebl).dgn  
 3/4/2005  
 3:19:19 PM