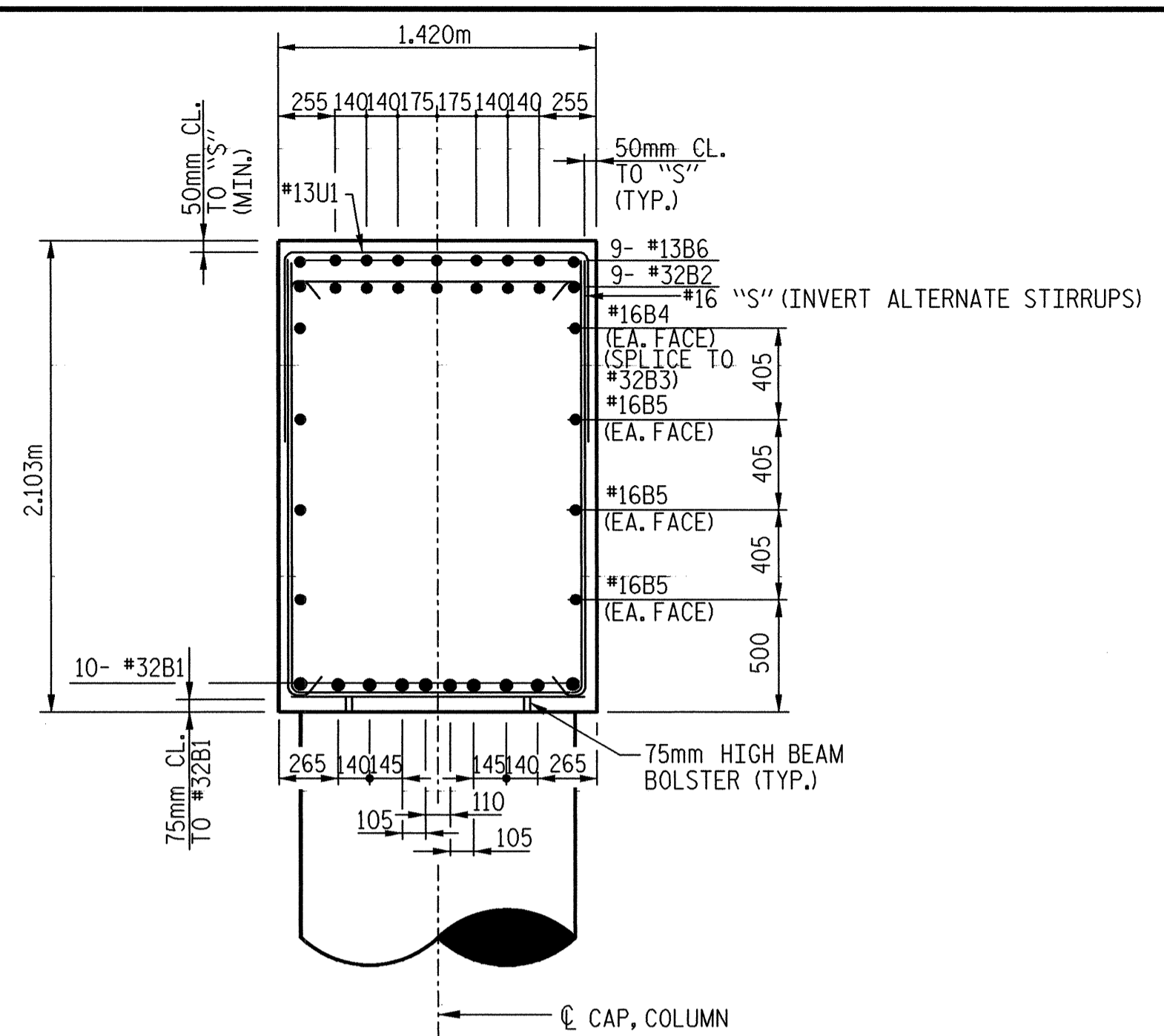
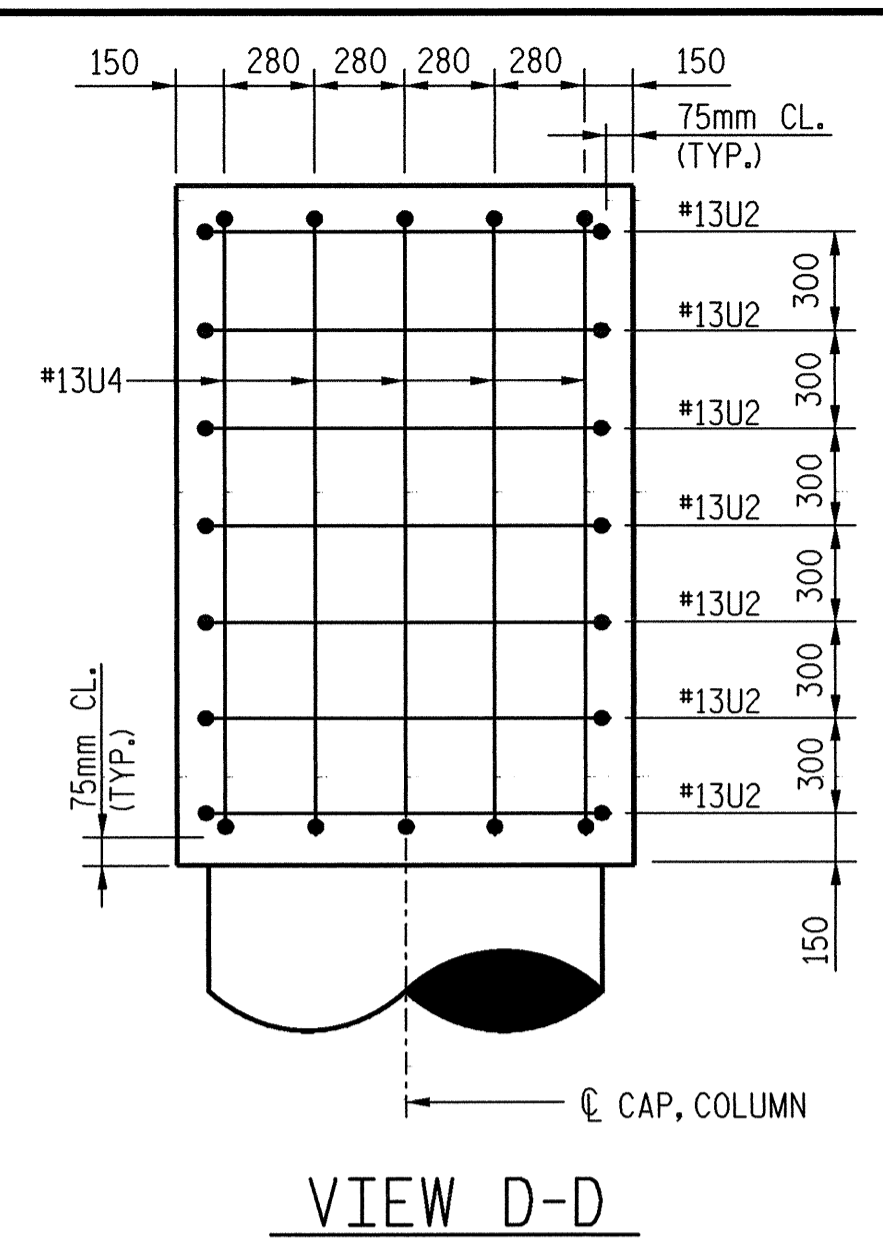


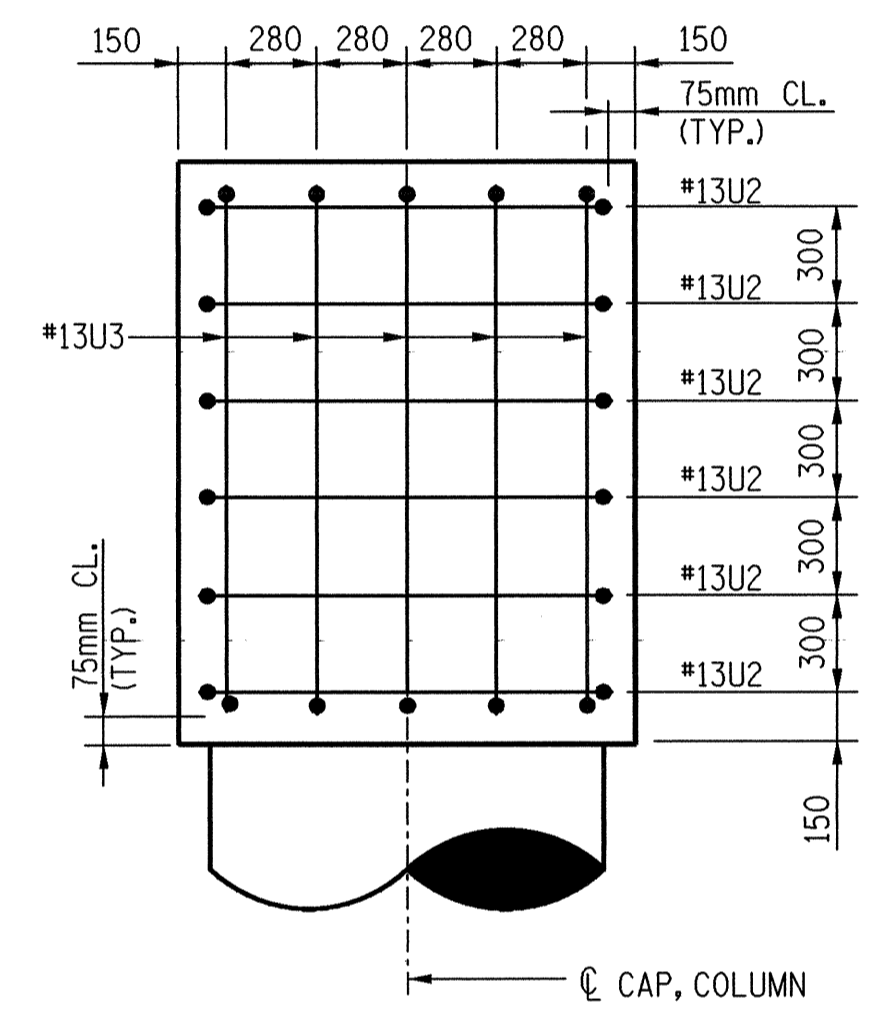
SECTION A-A



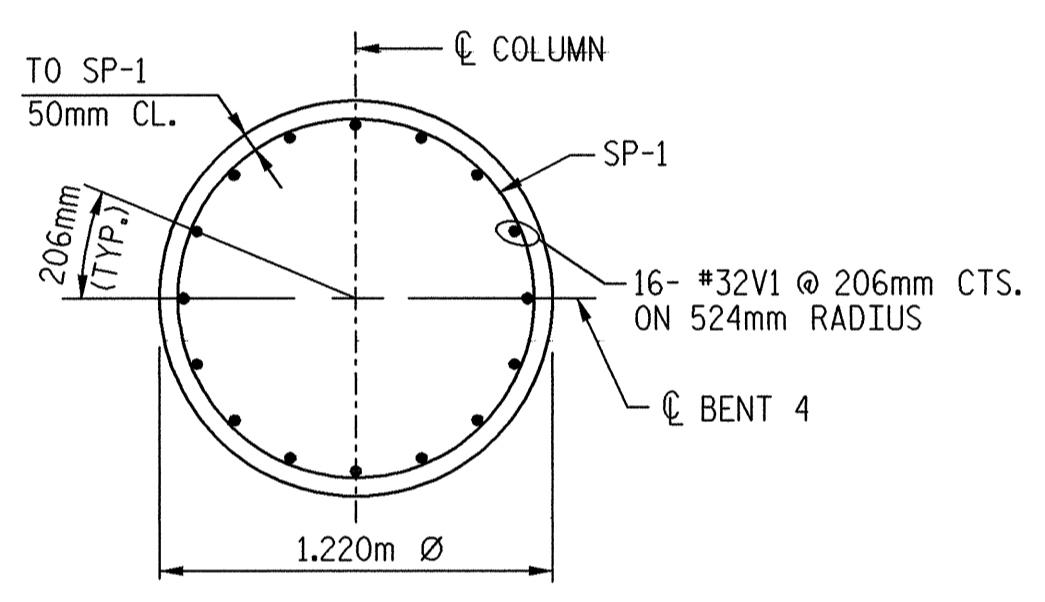
SECTION B-B



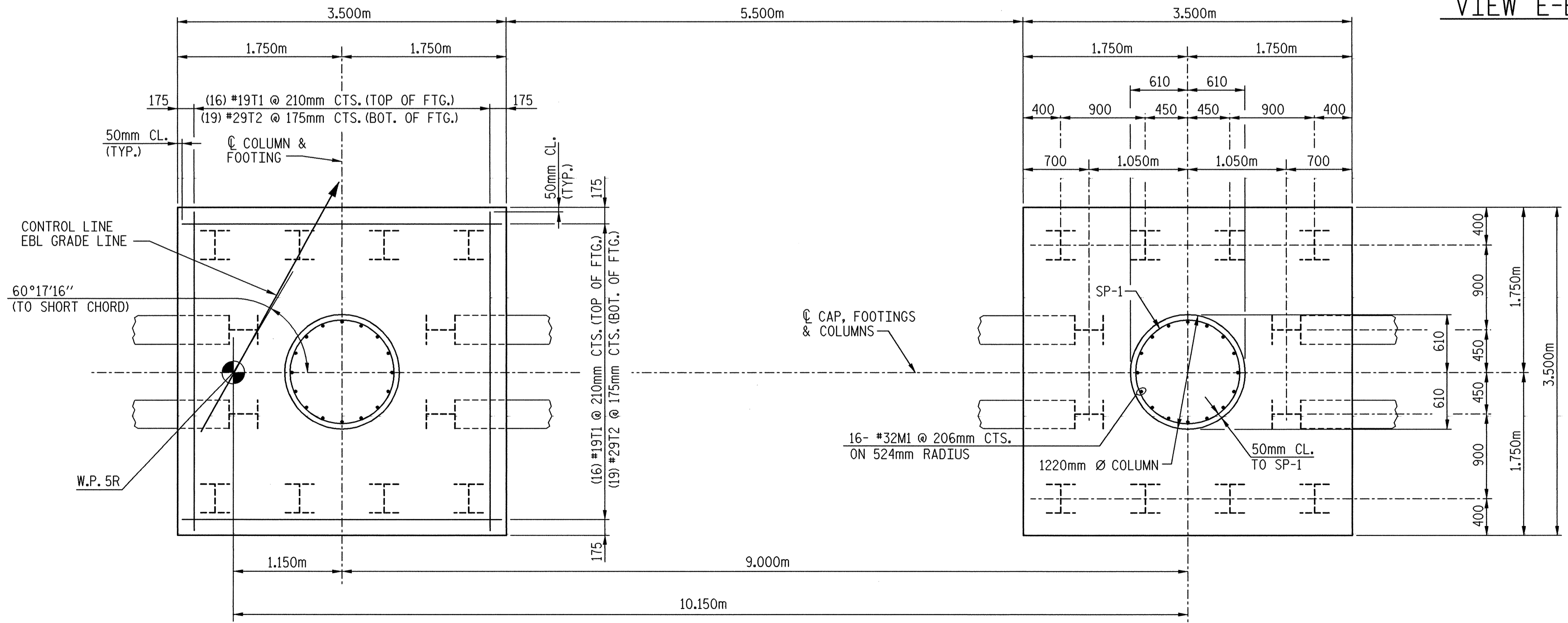
VIEW D-D



VIEW E-E

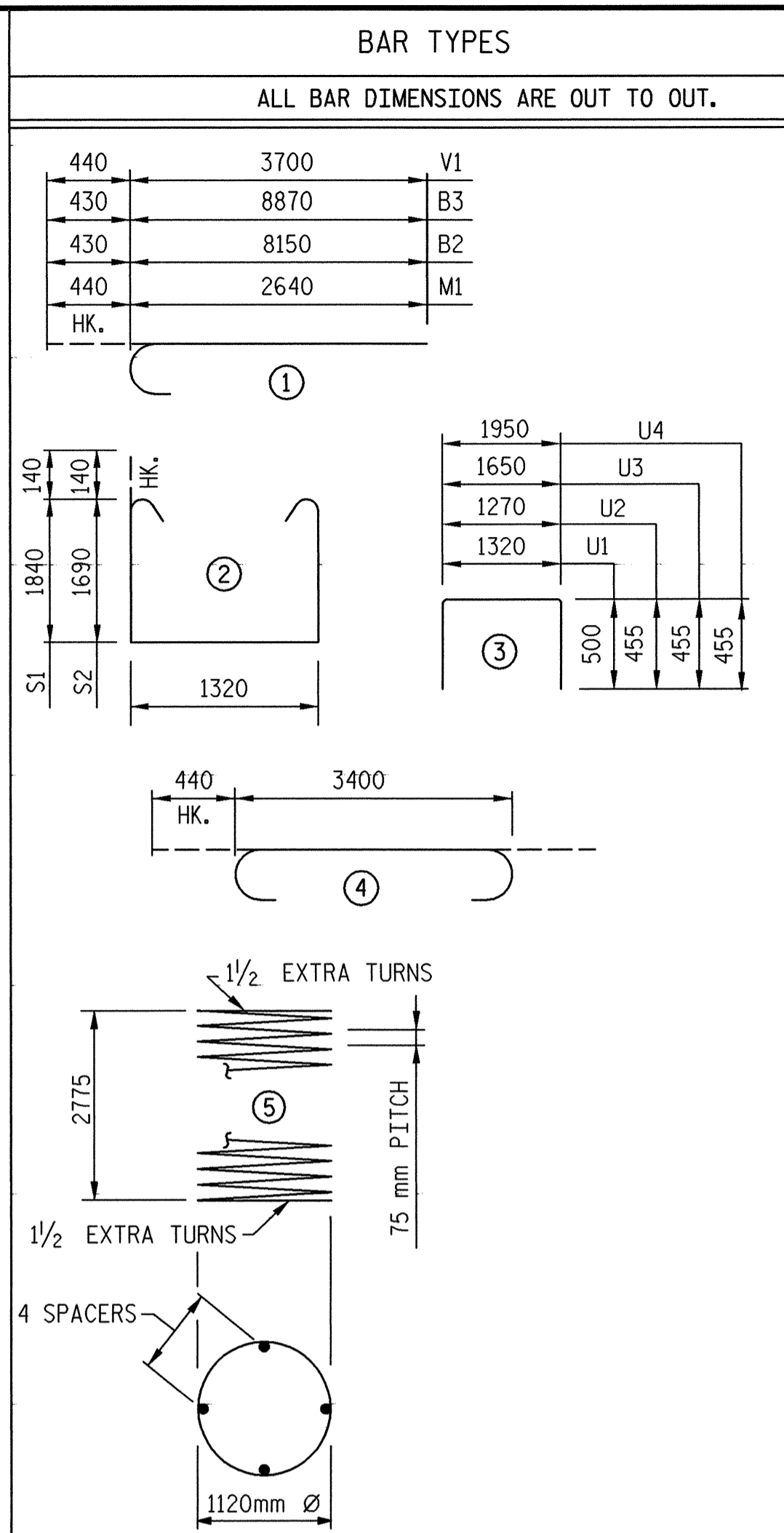


SECTION C-C



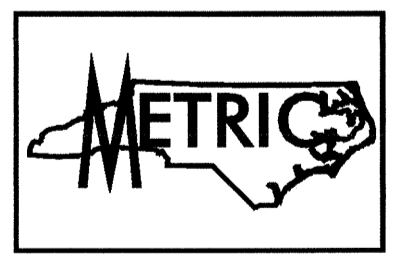
FOOTING PLAN

DETAILS SHOWN ARE TYPICAL FOR ALL FOOTINGS & COLUMNS UNLESS OTHERWISE NOTED



BAR TYPES			BILL OF MATERIALS		
ALL BAR DIMENSIONS ARE OUT TO OUT.			BENT #4		
BAR	NO.	SIZE	TYPE	LENGTH	WEIGHT
B1	10	#32	STR	14600	935
B2	9	#32	STR	8580	495
B3	9	#32	STR	9300	536
B4	2	#16	STR.	6660	21
B5	6	#16	STR.	14600	136
B6	9	#13	STR.	1840	16
M1	32	#32	STR	3080	631
S1	31	#16	STR	5280	254
S2	26	#16	STR	4980	201
T1	32	#19	STR.	3400	243
T2	38	#29	STR.	4280	823
U1	47	#13	STR	2320	108
U2	13	#13	STR	2180	28
U3	5	#13	STR	2560	13
U4	5	#13	STR	2860	14
V1	32	#32	STR	4140	848
SPIRAL COLUMN REINFORCING STEEL					
SP-1	2	*	5	139160	277
BENT #4 TOTAL QUANTITIES					
HP310 x 79 PILES		No: 24	264.0 m		
GALVANIZING STEEL PILES		LUMP SUM			
REINFORCING STEEL		5302 kg.			
SPIRAL COLUMN REINFORCING STEEL		277 kg.			
CLASS "A" CONCRETE BREAKDOWN BY POUR					
POUR 1 (FOOTINGS)		27.0 m <sup>3</sup>			
POUR 2 (COLUMNS)		6.3 m <sup>3</sup>			
POUR 3 (CAPS)		40.4 m <sup>3</sup>			
TOTAL CLASS "A" CONCRETE		73.7 m <sup>3</sup>			

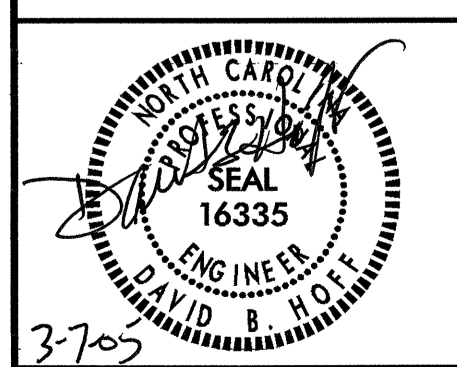
\* THE SP-1 SPIRAL REINFORCING STEEL SHALL BE W20 OR D-20 COLD DRAWN WIRE OR #13 PLAIN OR DEFORMED BAR.



PROJECT NO. R-2552AB  
JOHNSTON COUNTY  
STATION: 40+96.00 -L- P.O.C.

SHEET 2 OF 2

TRANSYSTEMS CORPORATION  
75 Beattie Place, Suite 400  
Greenville, SC 29601 (864) 234-0866



STATE OF NORTH CAROLINA  
DEPARTMENT OF TRANSPORTATION  
RALEIGH  
SUBSTRUCTURE  
BENT #4  
DETAILS  
(RIGHT LANE)

REVISIONS			SHEET NO.		
NO.	BY:	DATE:	NO.	BY:	DATE:
1			3		
2			4		

DWG. NO. 46  
TOTAL 64

5-377  
TOTAL SHEETS 429

9:\G\04\025\B-rdgs\Site\Right (EBL)\Final\Bent#4(rlb).dgn  
3/4/2005  
3:23:43 PM

DRAWN BY: J. C. PENDERGRAFT DATE: 8/01  
CHECKED BY: J. T. DIFEE DATE: 2/02