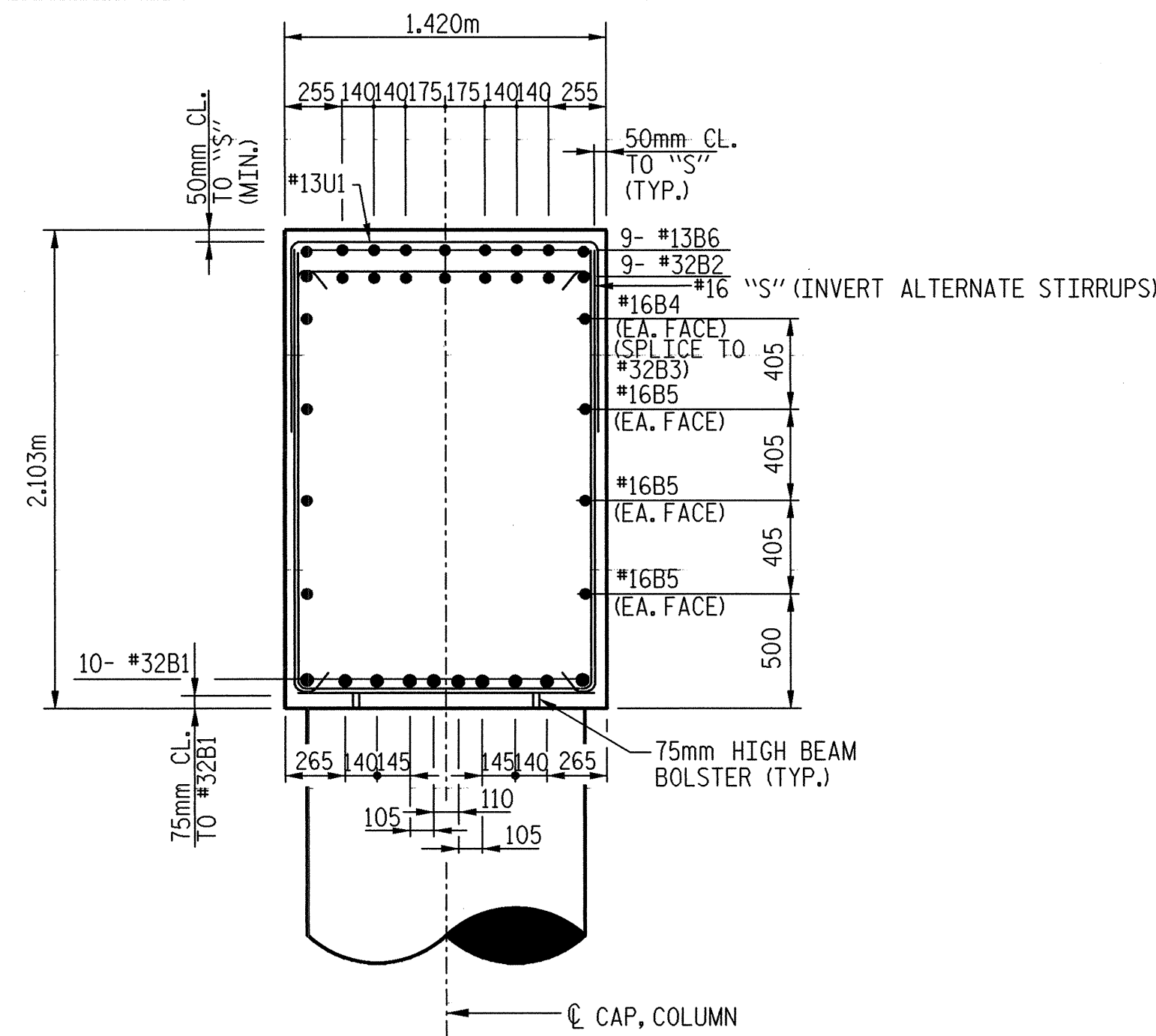
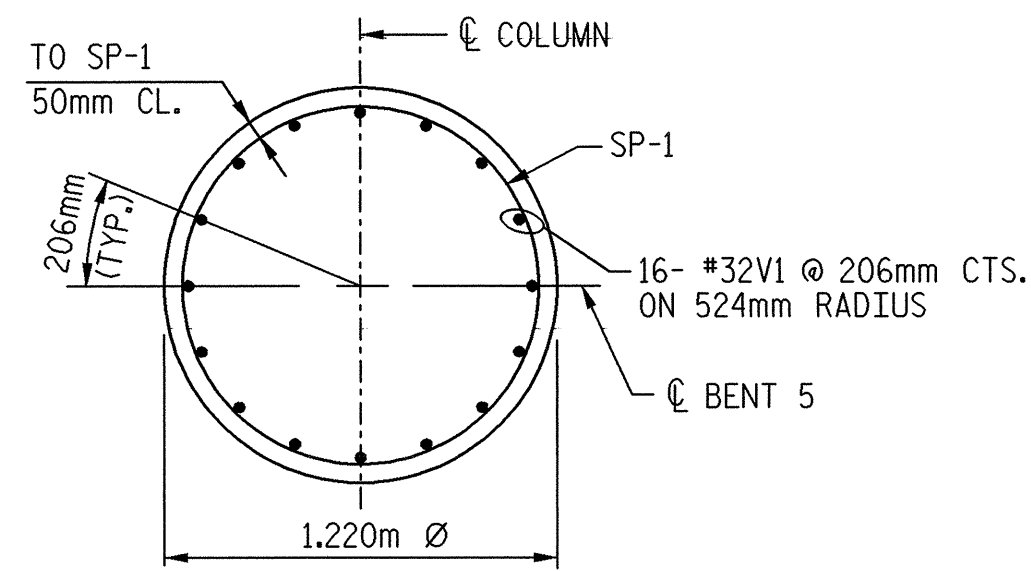


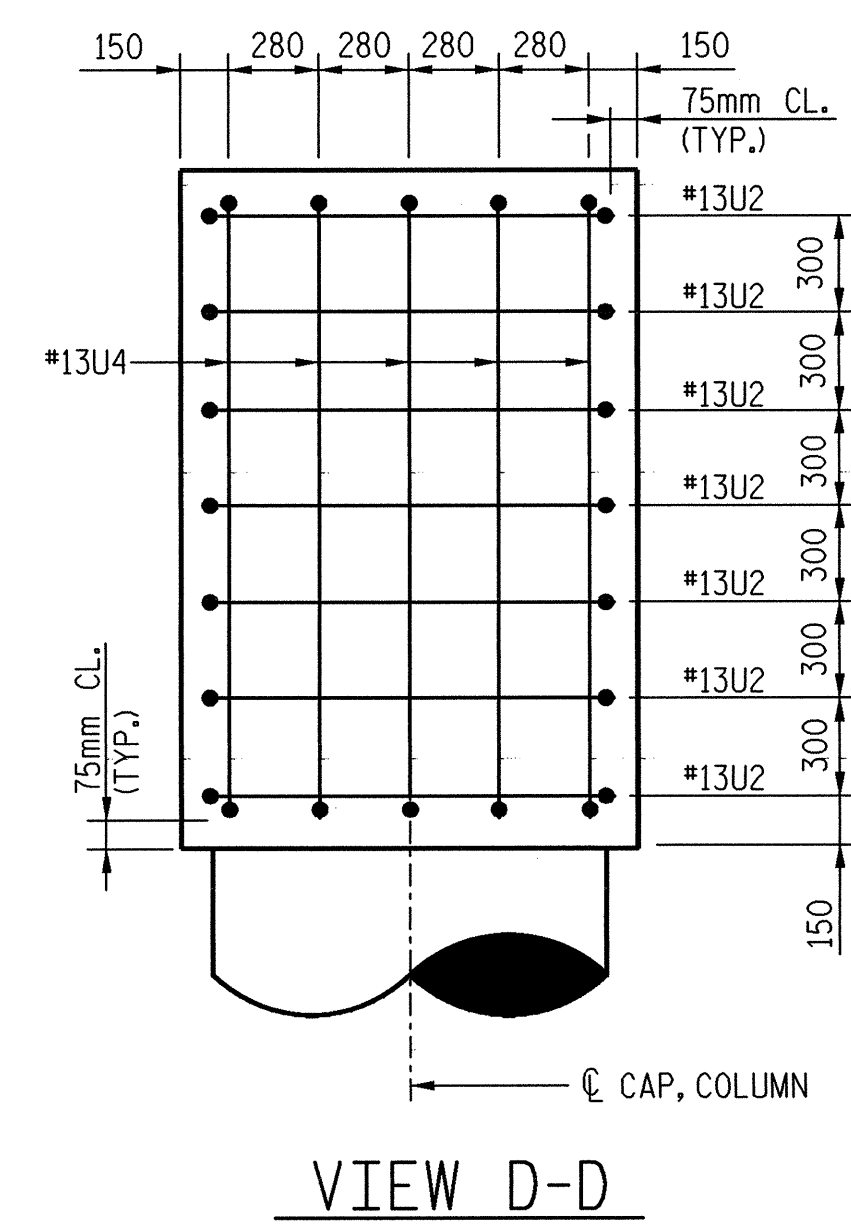
SECTION A-A



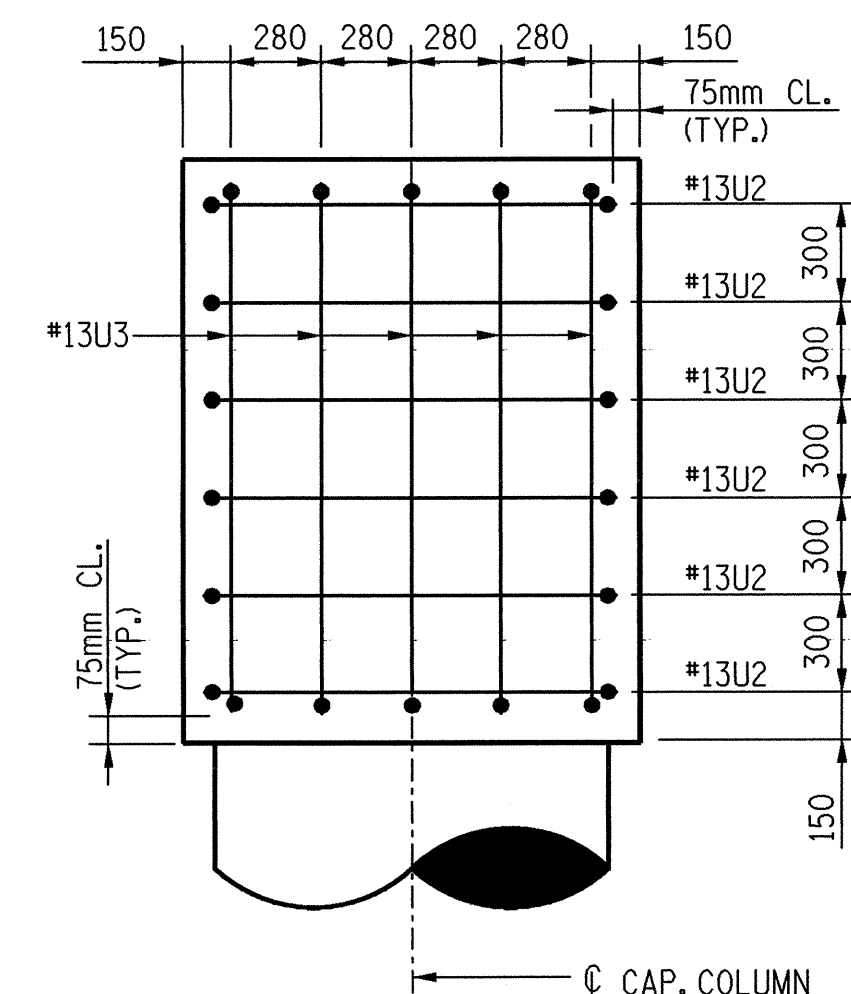
SECTION B-B



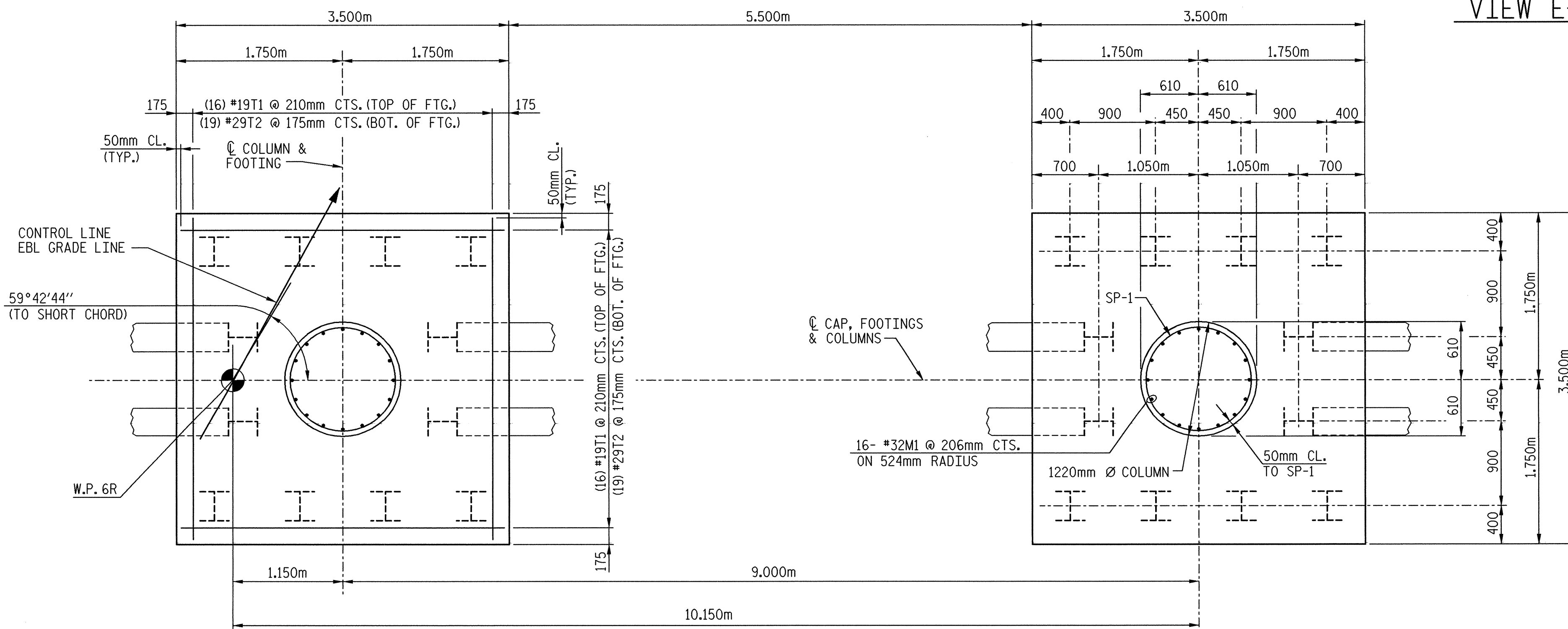
SECTION C-C



VIEW D-D

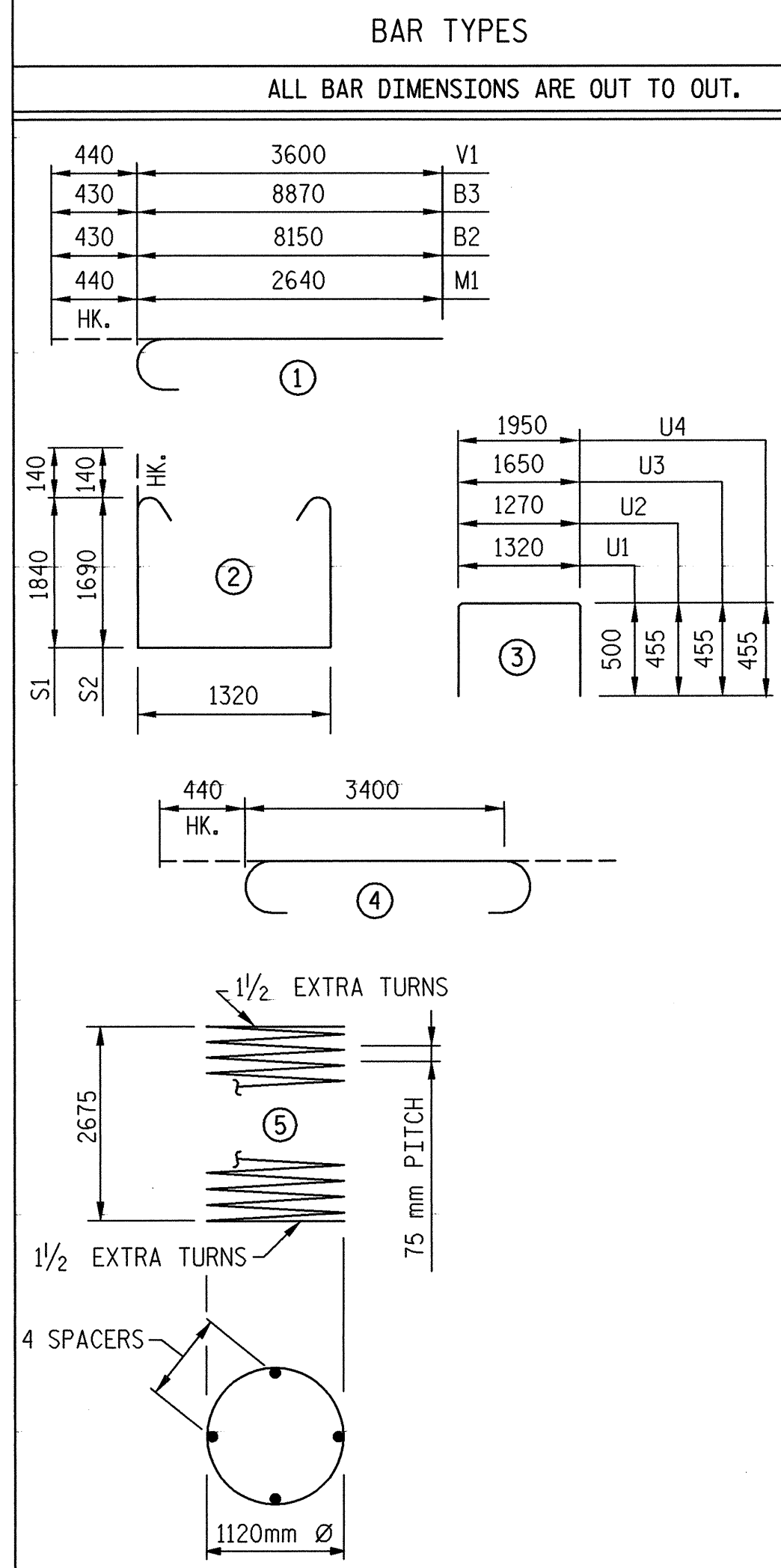


VIEW E-E



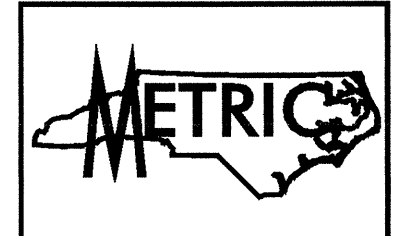
FOOTING PLAN

DETAILS SHOWN ARE TYPICAL FOR ALL FOOTINGS & COLUMNS UNLESS OTHERWISE NOTED



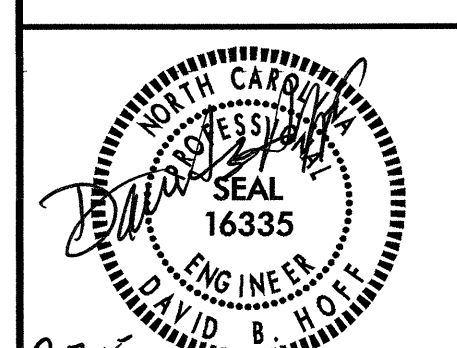
BAR TYPES		BILL OF MATERIALS				
ALL BAR DIMENSIONS ARE OUT TO OUT.						
BENT #5						
BAR	NO.	SIZE	TYPE	LENGTH	WEIGHT	
B1	10	#32	STR.	14600	935	
B2	9	#32	STR.	8580	495	
B3	9	#32	STR.	9300	536	
B4	2	#16	STR.	6660	21	
B5	6	#16	STR.	14600	136	
B6	9	#13	STR.	1840	16	
M1	32	#32		3080	631	
S1	31	#16		5280	254	
S2	26	#16		4980	201	
T1	32	#19	STR.	3400	243	
T2	38	#29		4280	823	
U1	47	#13		2320	108	
U2	13	#13		2180	28	
U3	5	#13		2560	13	
U4	5	#13		2860	14	
V1	32	#32		4040	828	
SPIRAL COLUMN REINFORCING STEEL						
SP-1	2	*	5	134520	267	
BENT #5 TOTAL QUANTITIES						
HP310 x 79 PILES No: 24 240.0 m						
CALVANIZING STEEL PILES LUMP SUM						
REINFORCING STEEL 5282 kg.						
SPIRAL COLUMN REINFORCING STEEL 267 kg.						
CLASS "A" CONCRETE BREAKDOWN BY POUR						
POUR 1 (FOOTINGS) 27.0 m <sup>3</sup>						
POUR 2 (COLUMNS) 6.1 m <sup>3</sup>						
POUR 3 (CAPS) 40.4 m <sup>3</sup>						
TOTAL CLASS "A" CONCRETE 73.5 m <sup>3</sup>						

\* THE SP-1 SPIRAL REINFORCING STEEL SHALL BE W20 OR D-20 COLD DRAWN WIRE OR #13 PLAIN OR DEFORMED BAR.



PROJECT NO. R-2552AB  
JOHNSTON COUNTY  
STATION: 40+96.00 -L- P.O.C.

TRANSYSTEMS CORPORATION  
75 Beethle Place, Suite 400  
Greenville, SC 29601 (864) 234-0866



STATE OF NORTH CAROLINA  
DEPARTMENT OF TRANSPORTATION  
RALEIGH  
SUBSTRUCTURE  
BENT #5  
DETAILS  
(RIGHT LANE)

REVISIONS						SHEET NO.
NO.	BY:	DATE:	NO.	BY:	DATE:	
1			3			5-379
2			4			TOTAL SHEETS 429

DRAWN BY: J. C. PENDERGRAFT DATE: 8/01  
CHECKED BY: J. T. DIFEE DATE: 2/02

9:\G\04\0125\Bridg\Site\Right (EBL)\Final\Bent5a(ebl).dgn  
3/4/2005  
3:25:14 PM