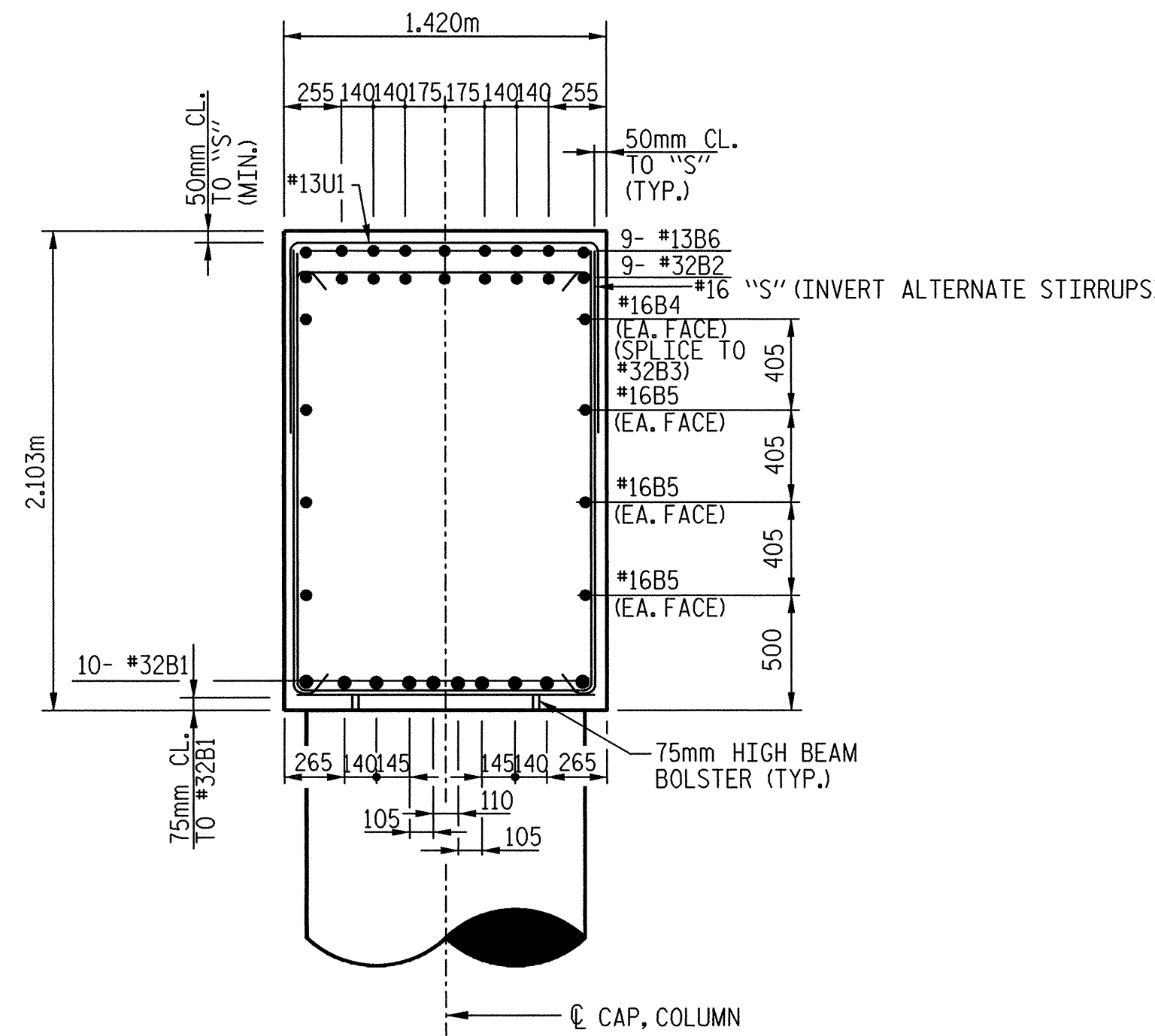
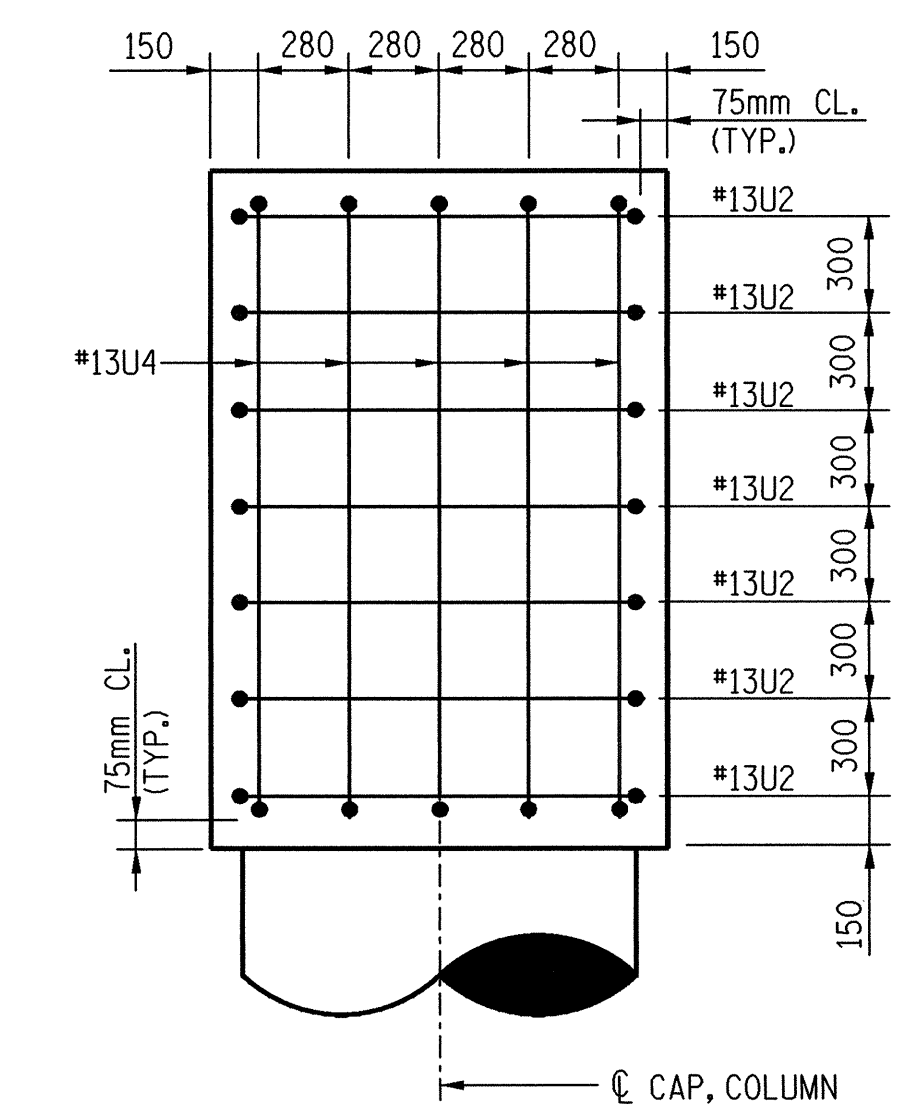


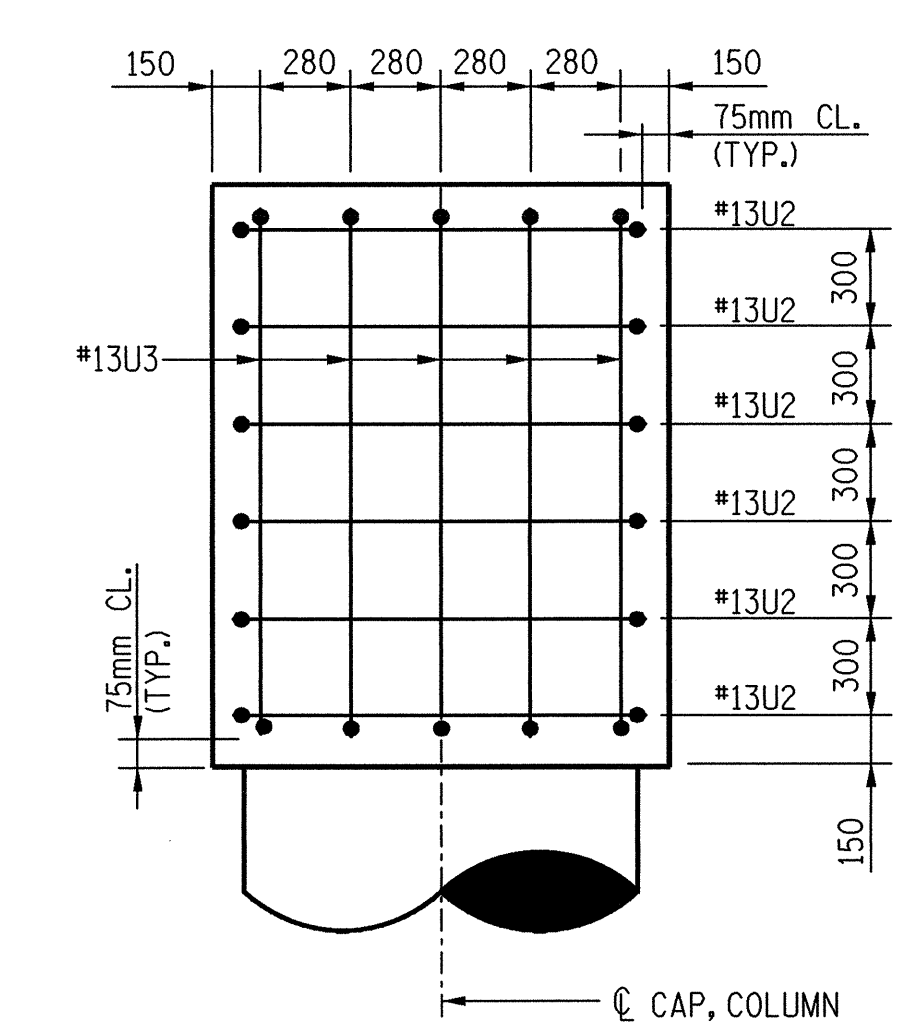
SECTION A-A



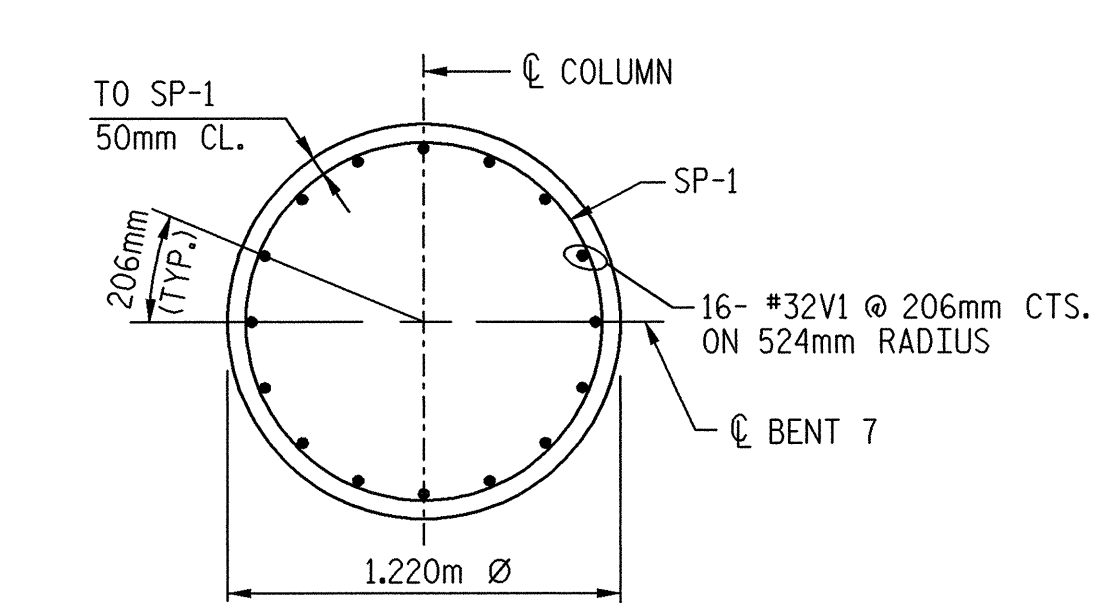
SECTION B-B



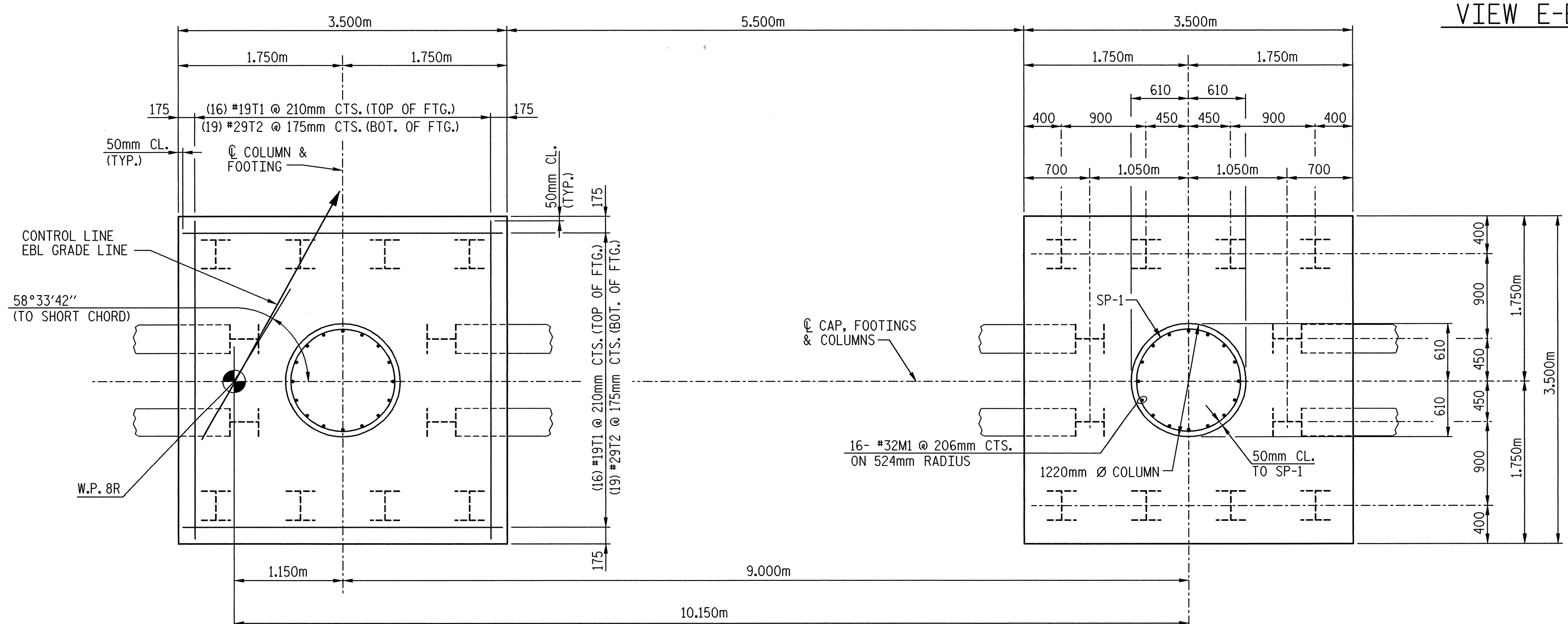
VIEW D-D



VIEW E-E

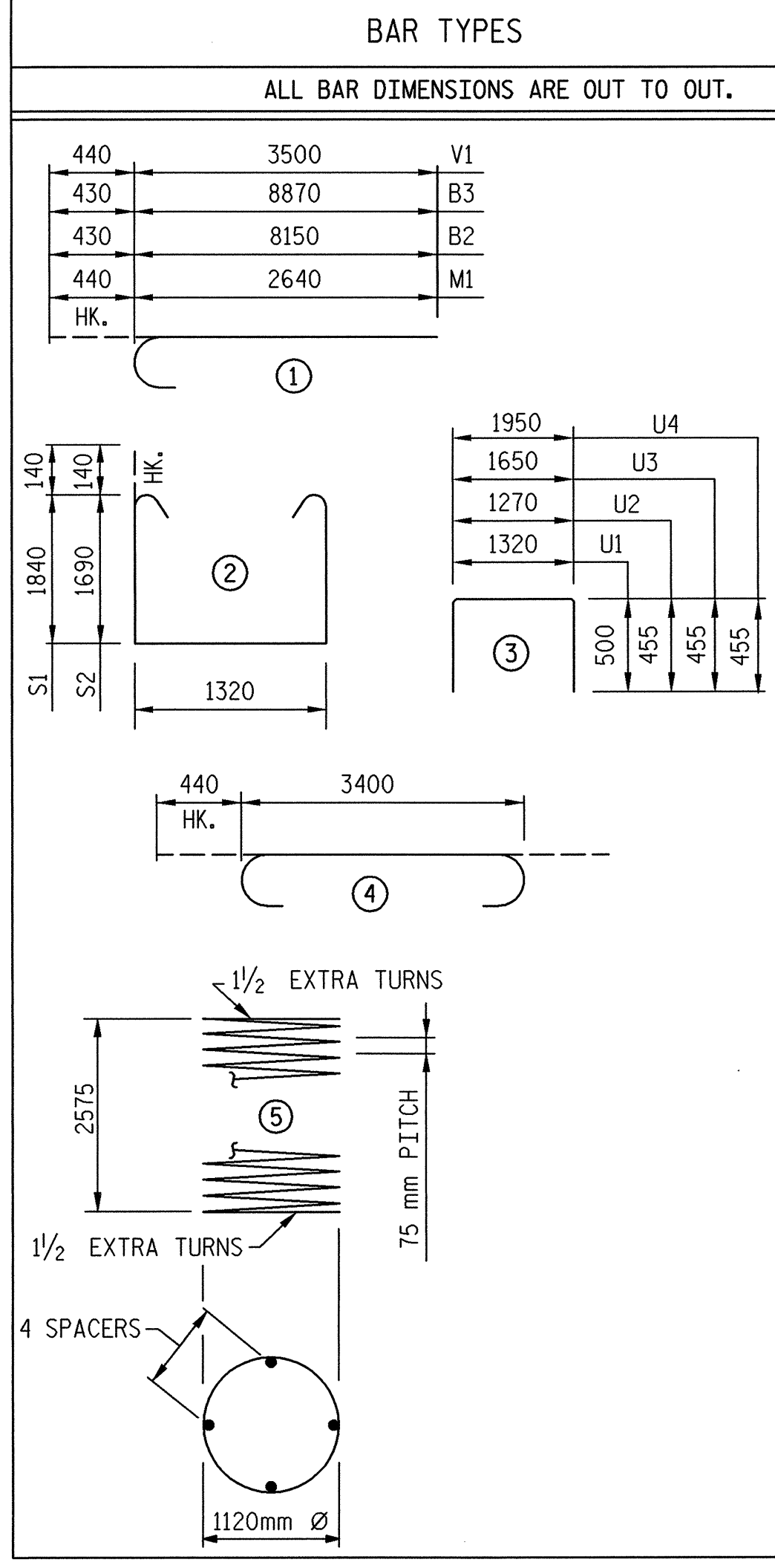


SECTION C-C



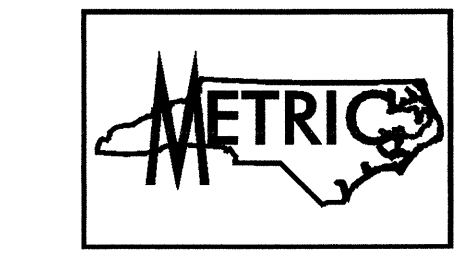
FOOTING PLAN

DETAILS SHOWN ARE TYPICAL FOR ALL FOOTINGS & COLUMNS UNLESS OTHERWISE NOTED



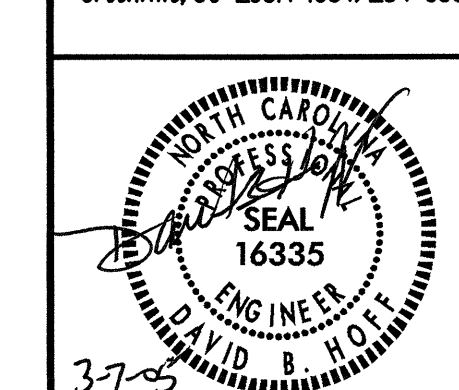
\* THE SP-1 SPIRAL REINFORCING STEEL SHALL BE W20 OR D-20 COLD DRAWN WIRE OR #13 PLAIN OR DEFORMED BAR.

BAR TYPES						BILL OF MATERIALS					
ALL BAR DIMENSIONS ARE OUT TO OUT.						BENT #7					
BAR	NO.	SIZE	TYPE	LENGTH	WEIGHT	BAR	NO.	SIZE	TYPE	LENGTH	WEIGHT
440	3500	V1				M1	32	#32	1	3080	631
430	8870	B3				S1	31	#16	2	5280	254
430	8150	B2				S2	26	#16	2	4980	201
440	2640	M1				T1	32	#19	STR.	3400	243
HK.						T2	38	#29		4280	823
						U1	47	#13	3	2320	108
						U2	13	#13	3	2180	28
						U3	5	#13	3	2560	13
						U4	5	#13	3	2860	14
						V1	32	#32	1	3940	807
SPIRAL COLUMN REINFORCING STEEL											
SP-1	2	*	5	129880	258						
BENT #7 TOTAL QUANTITIES											
HP310 x 79 PILES No: 24						240.0 m					
GALVANIZING STEEL PILES						LUMP SUM					
REINFORCING STEEL						5261 kg.					
SPIRAL COLUMN REINFORCING STEEL						258 kg.					
CLASS "A" CONCRETE BREAKDOWN BY POUR											
POUR 1 (FOOTINGS)						27.0 m <sup>3</sup>					
POUR 2 (COLUMNS)						5.8 m <sup>3</sup>					
POUR 3 (CAPS)						40.4 m <sup>3</sup>					
TOTAL CLASS "A" CONCRETE						73.2 m <sup>3</sup>					



PROJECT NO. R-2552AB  
 JOHNSTON COUNTY  
 STATION: 40+96.00 -L- P.O.C.

TRANSYSTEMS CORPORATION  
 75 Beattie Place, Suite 400  
 Greenville, SC 29671 (864) 234-0866



STATE OF NORTH CAROLINA  
 DEPARTMENT OF TRANSPORTATION  
 RALEIGH  
 SUBSTRUCTURE  
 BENT #7  
 DETAILS  
 (RIGHT LANE)

REVISIONS						SHEET NO.	
NO.	BY:	DATE:	NO.	BY:	DATE:	S-363	
1			3			TOTAL SHEETS	
2			4			429	

DRAWN BY: J. C. PENDERGRAFT DATE: 8/01  
 CHECKED BY: J.T. DIFFEE DATE: 2/02

FILES \$  
 DATES \$  
 TIMES \$