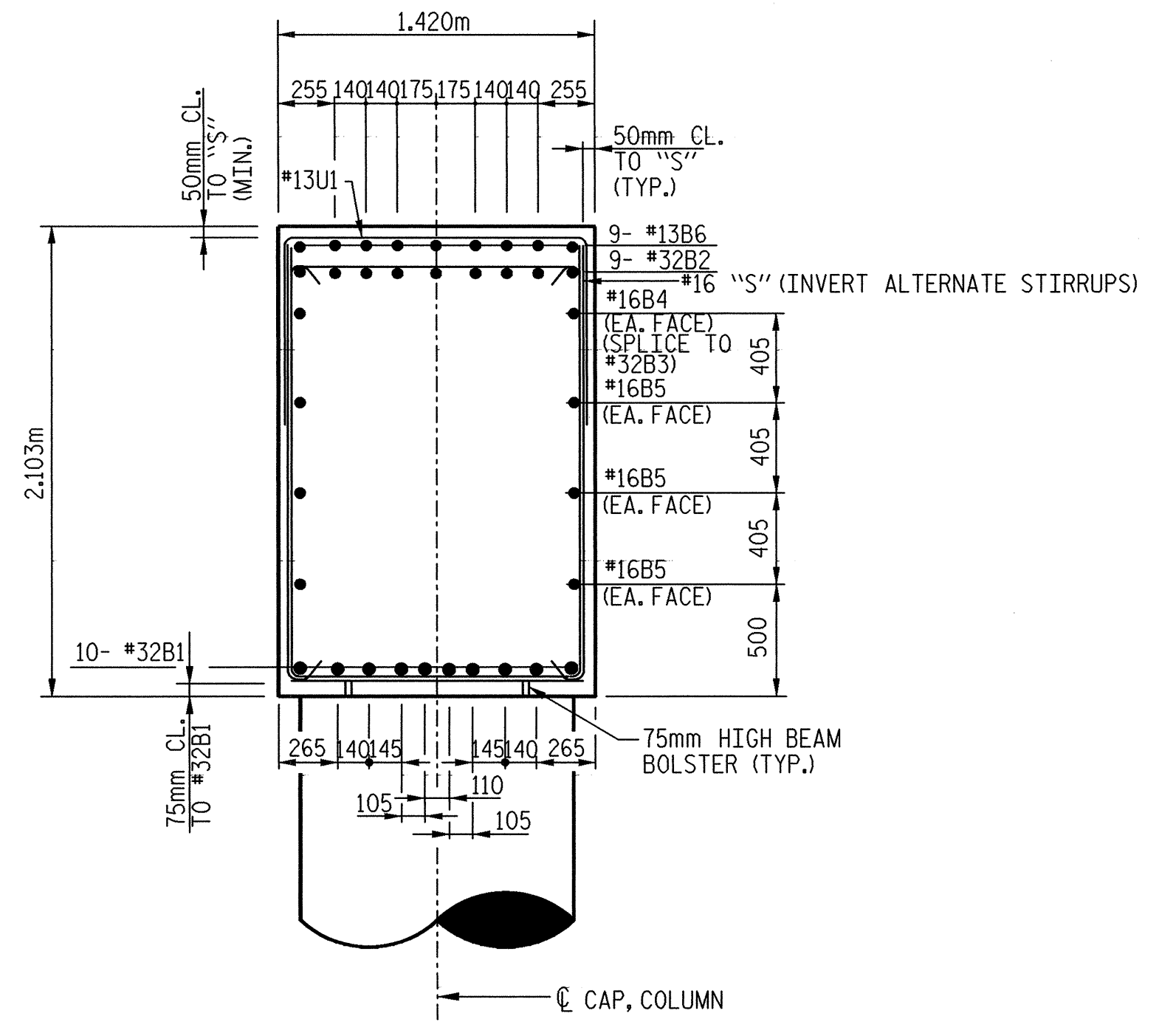
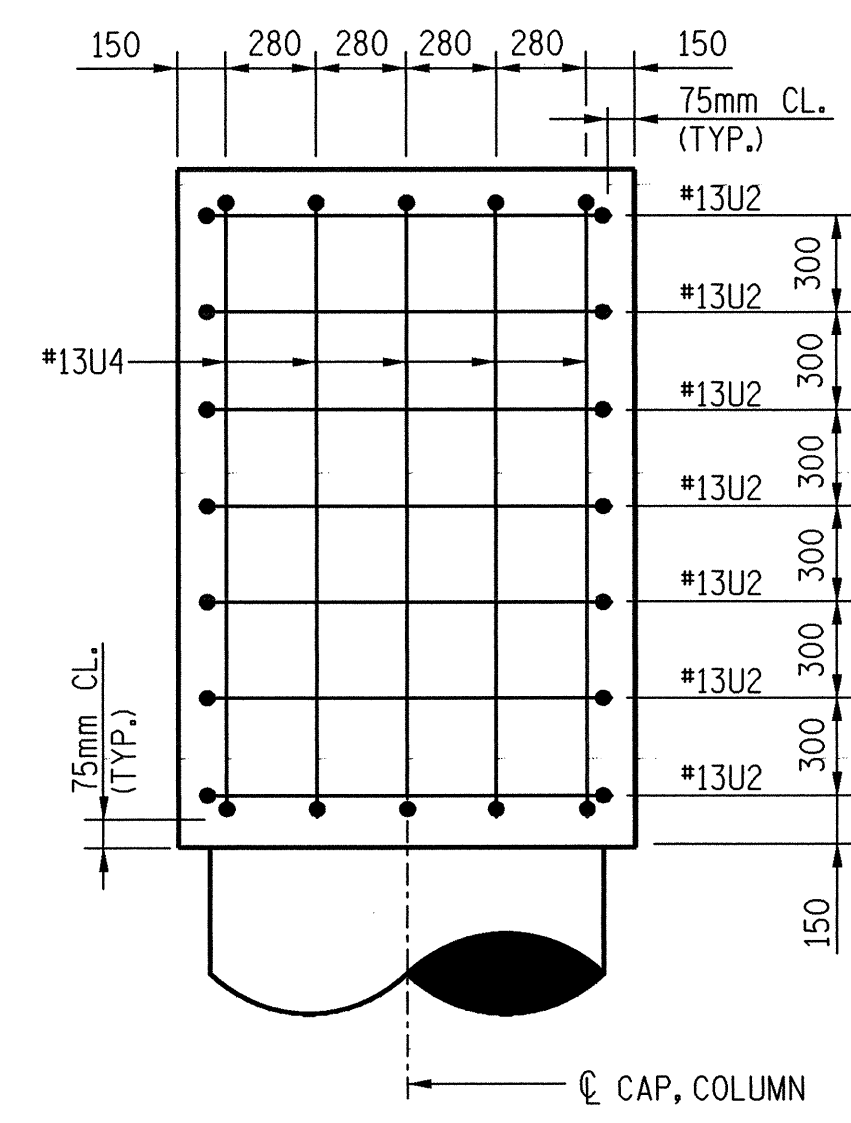


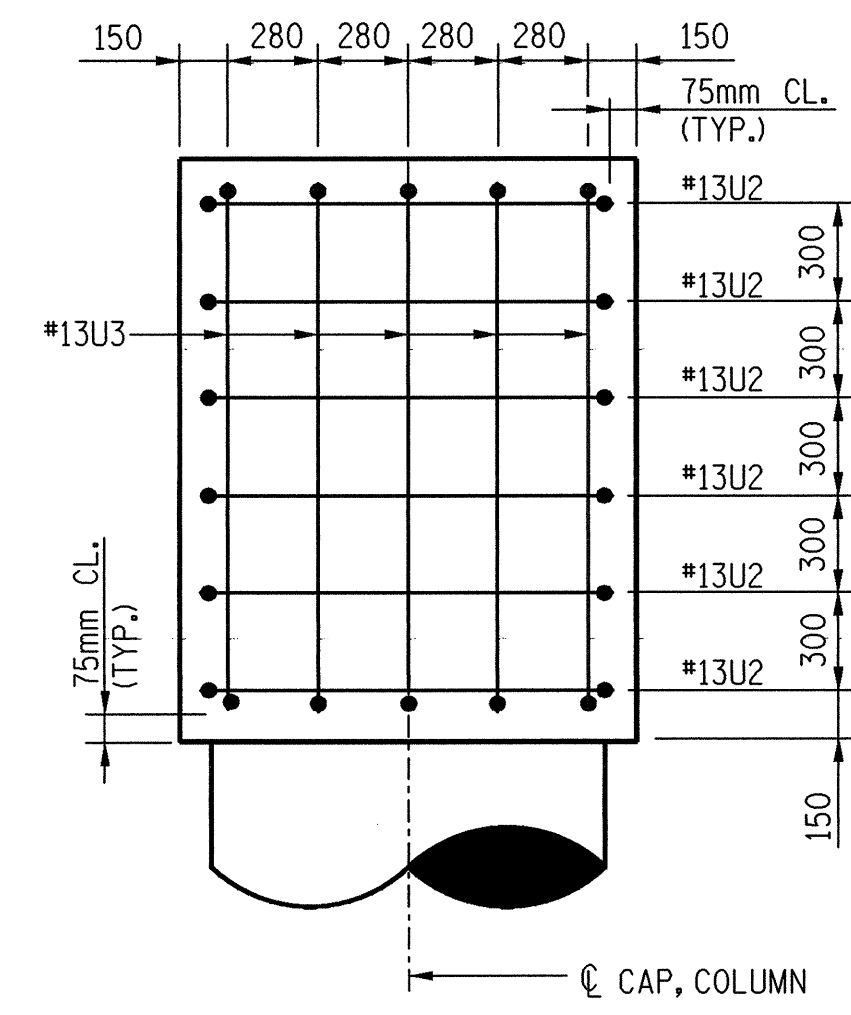
SECTION A-A



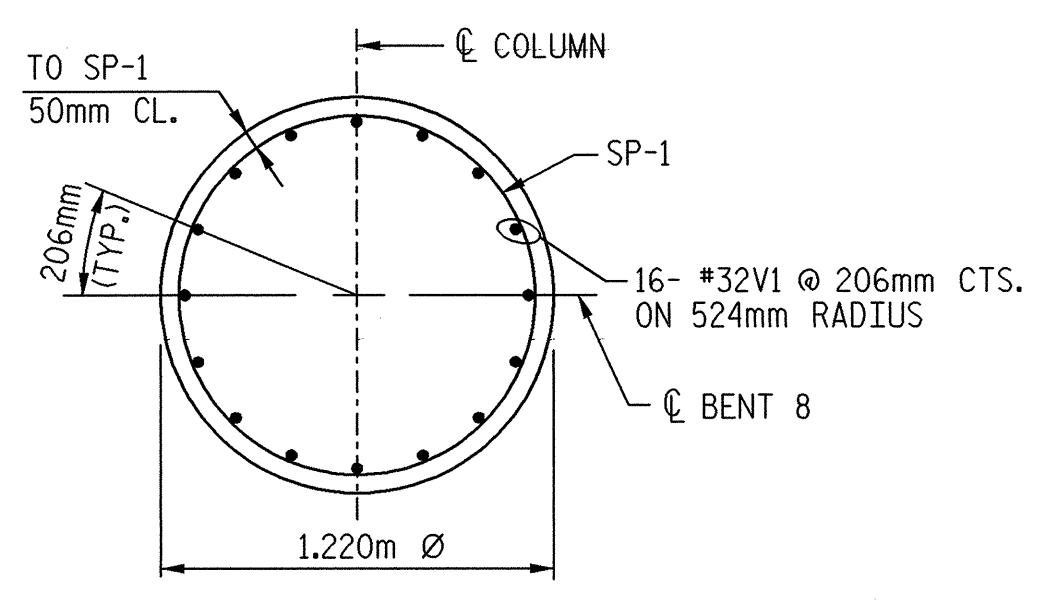
SECTION B-B



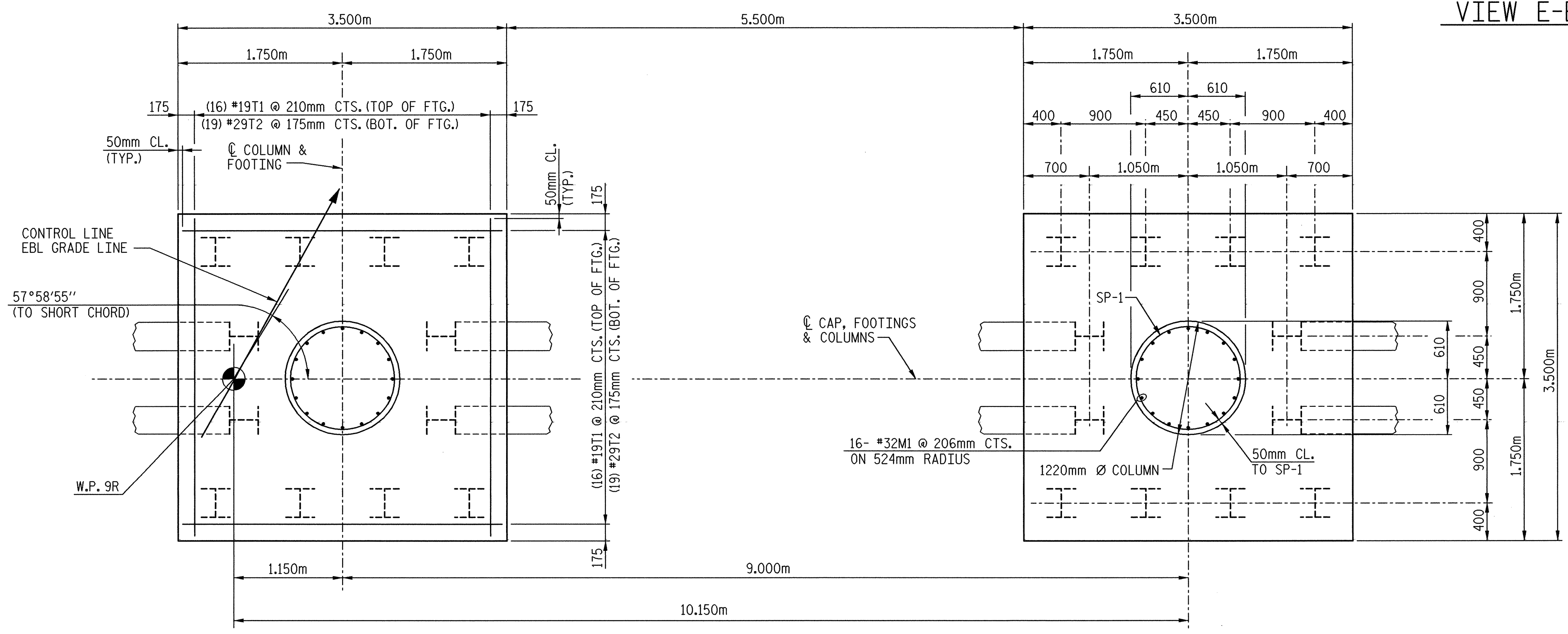
VIEW D-D



VIEW E-E

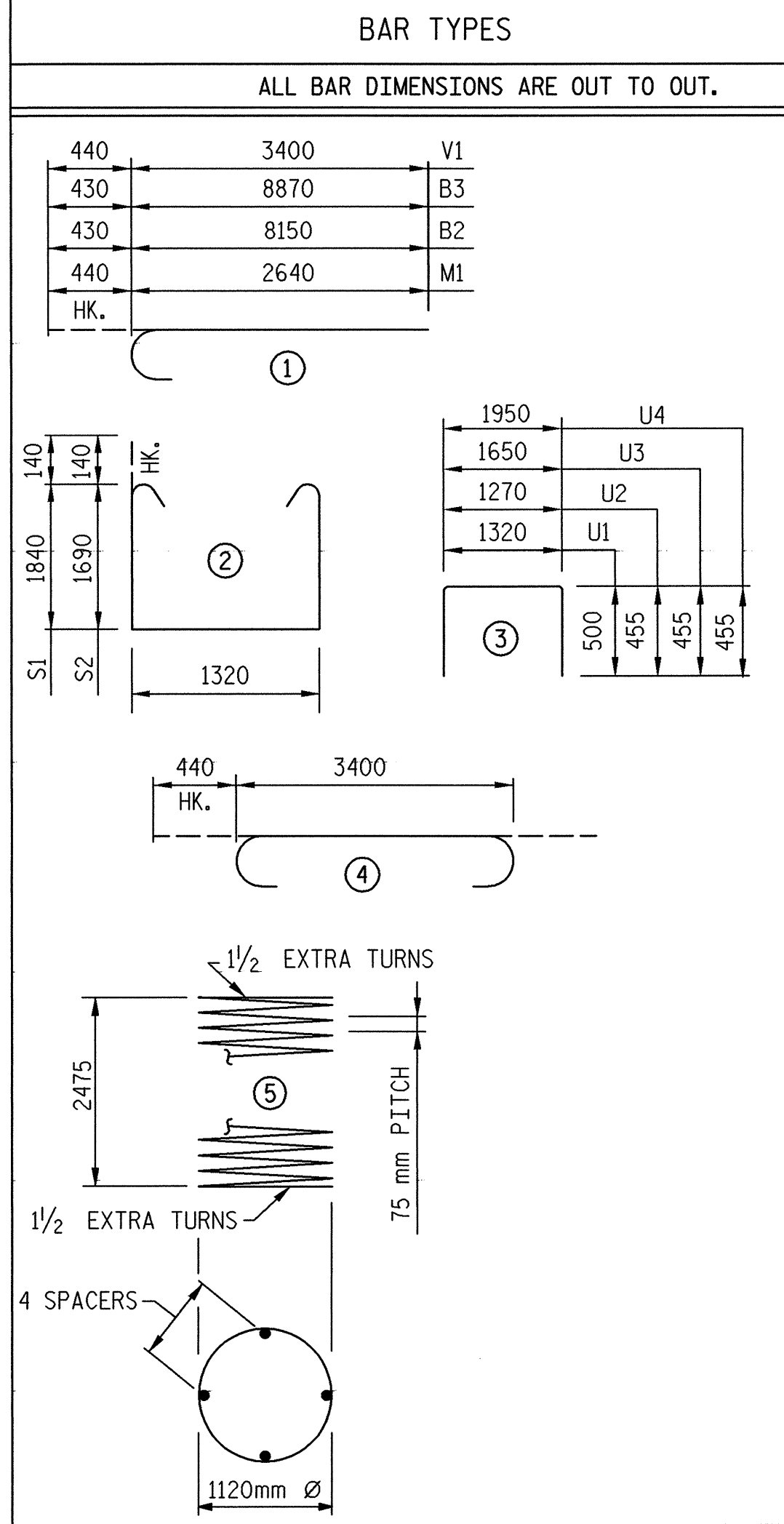


SECTION C-C



FOOTING PLAN

DETAILS SHOWN ARE TYPICAL FOR ALL FOOTINGS & COLUMNS UNLESS OTHERWISE NOTED

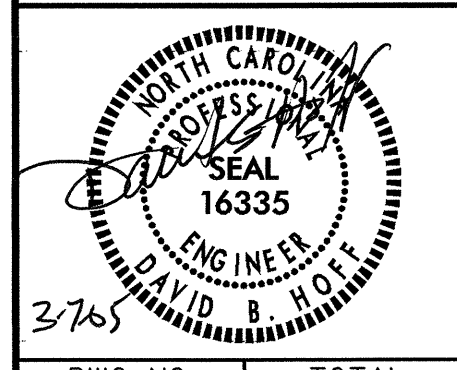


* THE SP-1 SPIRAL REINFORCING STEEL SHALL BE W20 OR D-20 COLD DRAWN WIRE OR #13 PLAIN OR DEFORMED BAR.



PROJECT NO. R-2552AB
JOHNSTON COUNTY
STATION: 40+96.00 -L- P.O.C.

TRANSYSTEMS CORPORATION
75 Beattie Place, Suite 400
Greenville, SC 29601 (864) 234-0866



STATE OF NORTH CAROLINA
DEPARTMENT OF TRANSPORTATION
RALEIGH
SUBSTRUCTURE
BENT #8
DETAILS
(RIGHT LANE)

REVISIONS						SHEET NO.
NO.	BY:	DATE:	NO.	BY:	DATE:	
1			3			5-305
2			4			TOTAL SHEETS 429

DRAWN BY: J. C. PENDERGRAFT DATE: 8/01
CHECKED BY: J. I. DIFEE DATE: 2/02

9:\V04\0125\Bridg\Site\Right (EBL)\Final\Bent8aleb1.dgn
3/4/2005
3:38:49 PM