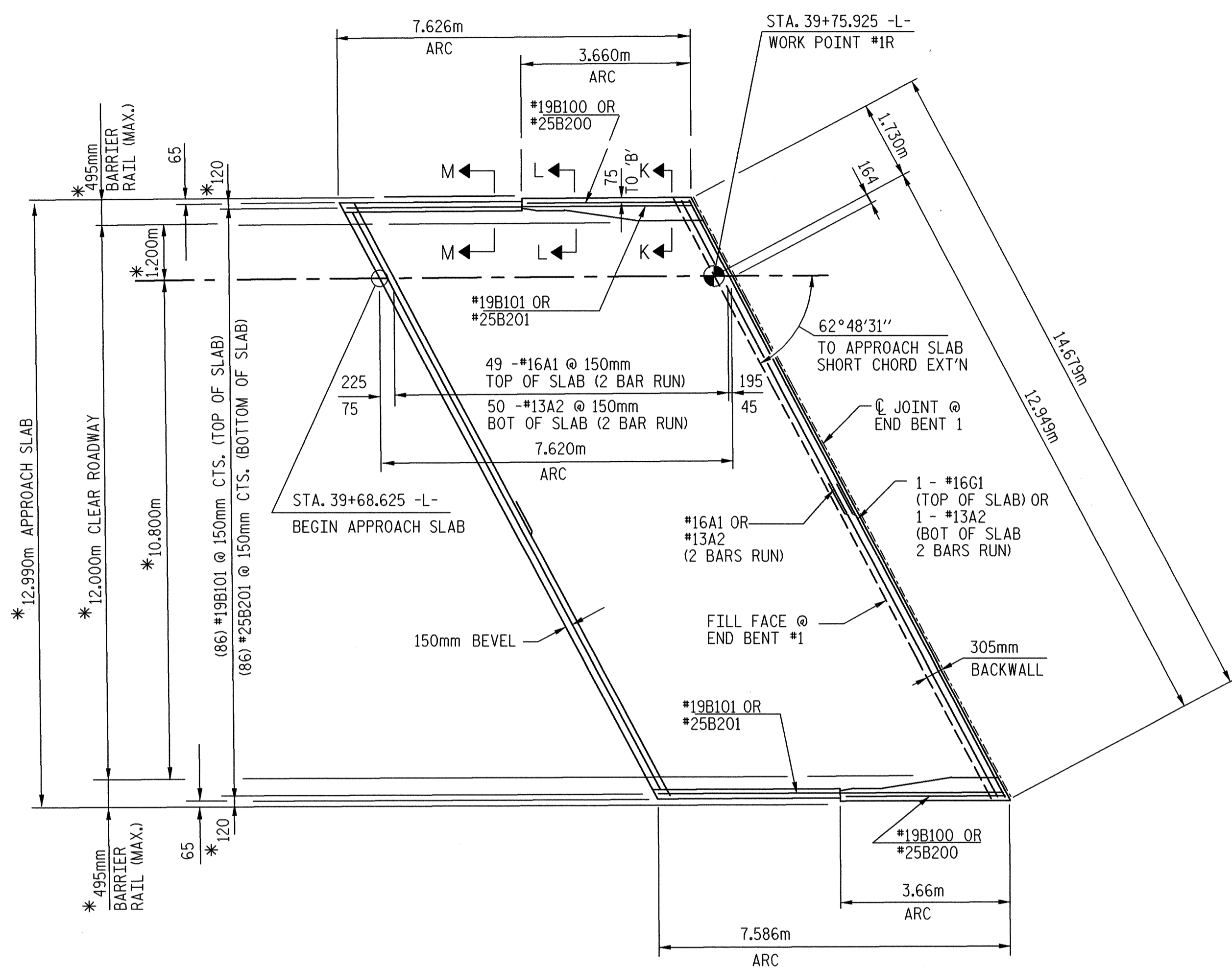


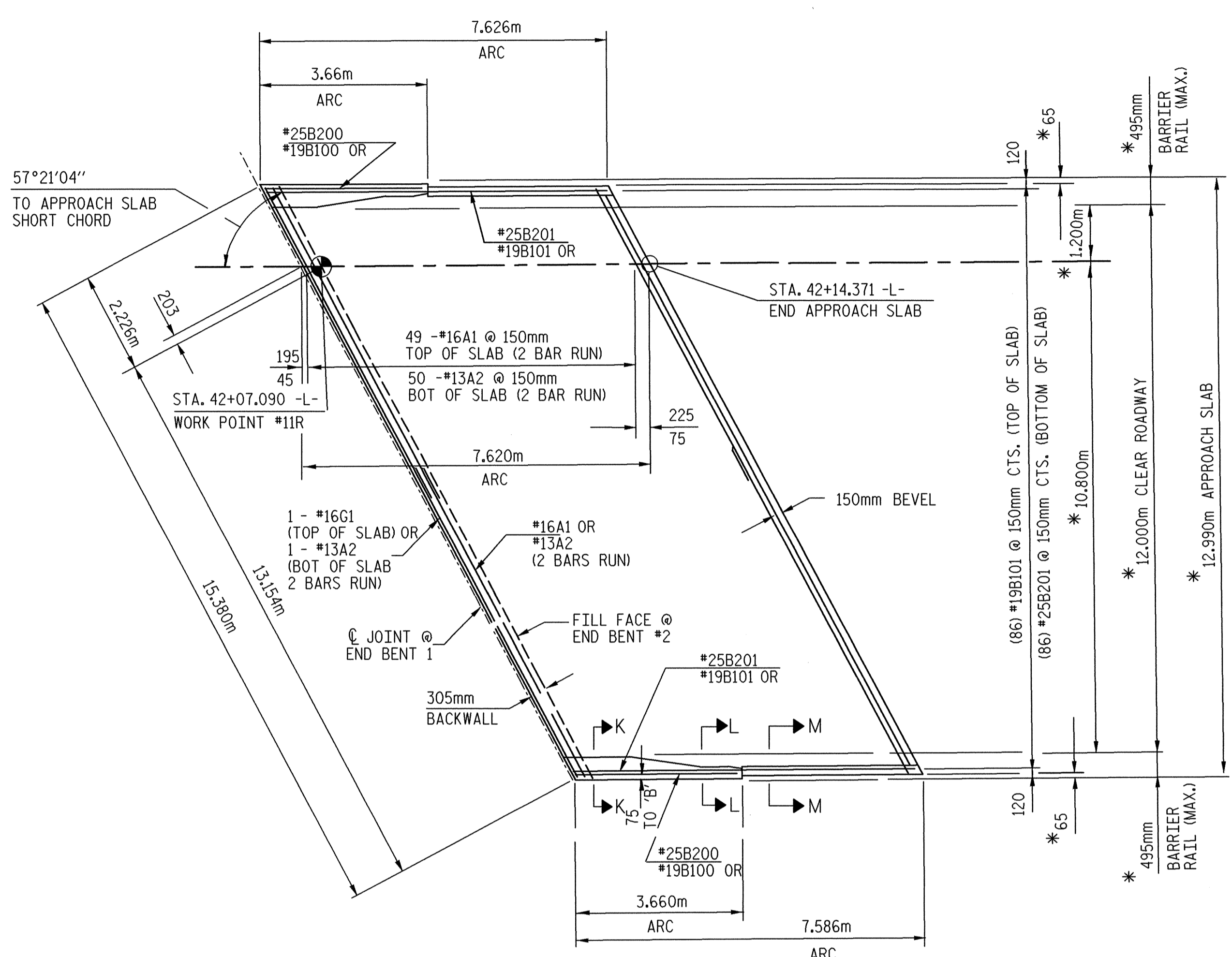
- NOTES:
- SEE SHEET 1 OF 4 FOR NOTES AND BILL OF MATERIAL.
 - SEE SHEETS 1 OF 4 FOR SECTIONS K-K, L-L & M-M.

ARC OFFSET IS 1mm @ MIDPOINT ALONG OUTSIDE EDGE OF APPROACH SLABS. (TYP. BOTH APPROACH SLABS)



PLAN AT END BENT #1

* DENOTES RADIAL DIMENSION



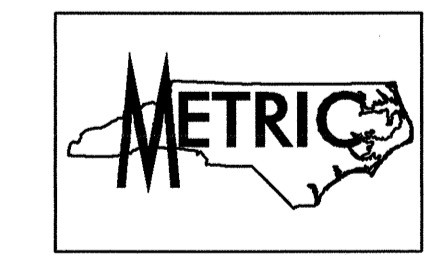
PLAN AT END BENT #2

* DENOTES RADIAL DIMENSION

SPLICE LENGTHS
 #13 A2 BARS = 540
 #16 A1 BARS = 770

g:\1\04\125\B-rdgs\Steel\Right (EBL\J\Final\Baselb).dgn
 3/7/2005
 4:28:23 PM

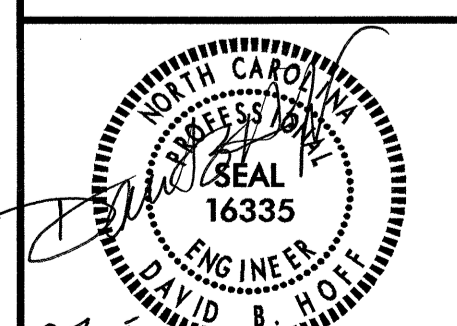
DRAWN BY : M.T. BELTSLE DATE : 4/01
 CHECKED BY : D.B. HOFF DATE : 10/01



PROJECT NO. R-252AB
 JOHNSTON COUNTY
 STATION: 40+96.000 -L- P.O.C.

SHEET 2 OF 4

TRANSYSTEMS CORPORATION
 75 Beattie Place, Suite 400
 Greenville, SC 29601 (864) 234-0866



STATE OF NORTH CAROLINA
 DEPARTMENT OF TRANSPORTATION
 RALEIGH

BRIDGE APPROACH SLAB
 (RIGHT LANE)

REVISIONS						SHEET NO.	
NO.	BY:	DATE:	NO.	BY:	DATE:	TOTAL SHEETS	
1			3			5	393
2			4			429	