

NOTES

THE GUARDRAIL ANCHOR ASSEMBLY SHALL CONSIST OF A 6mm HOLD DOWN PLATE AND 7 - 22.23mm Ø BOLTS WITH NUTS AND WASHERS.

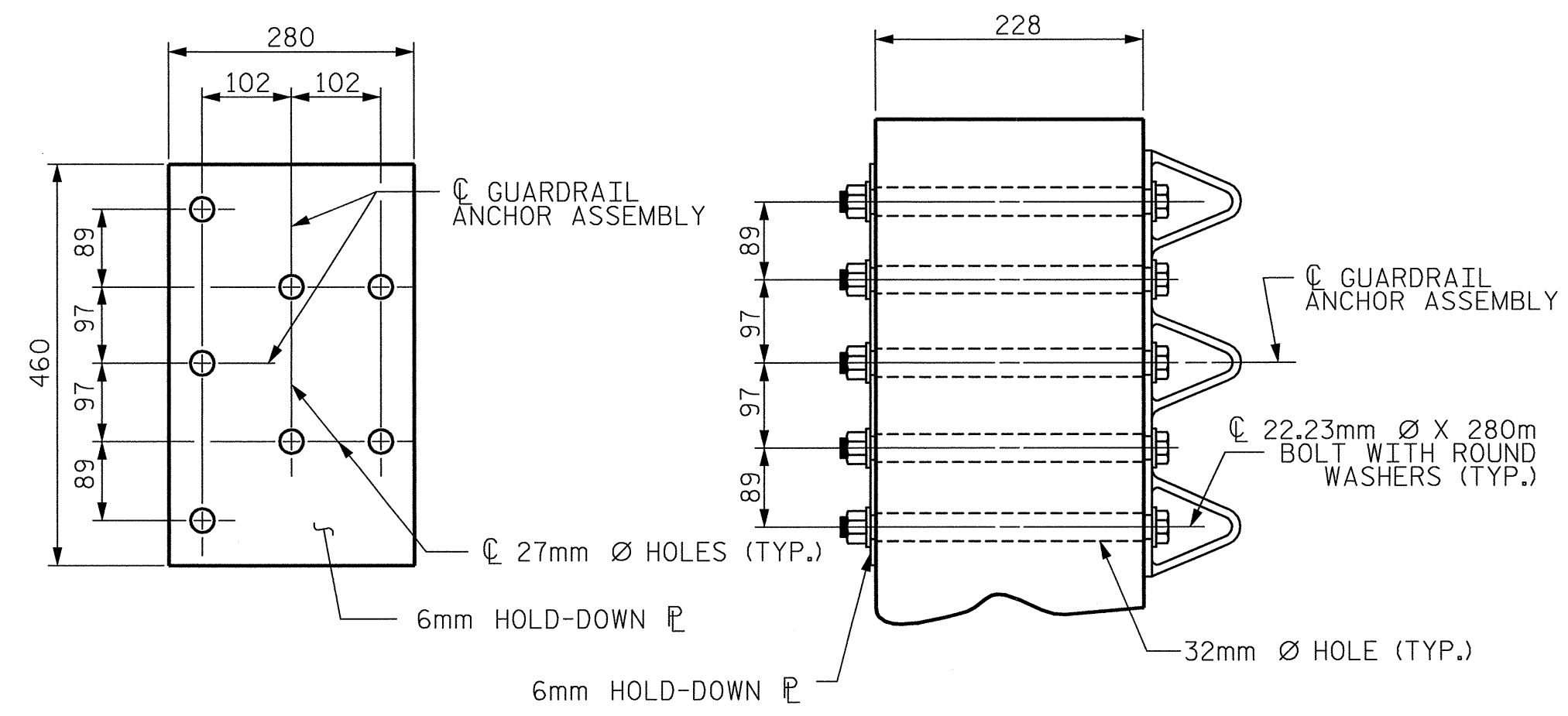
THE HOLD-DOWN PLATE SHALL CONFORM TO AASHTO M270 GRADE 250. AFTER FABRICATION, THE HOLD-DOWN PLATE SHALL BE HOT-DIP GALVANIZED IN ACCORDANCE WITH AASHTO M111.

BOLTS SHALL CONFORM TO THE REQUIREMENTS OF ASTM A307 AND NUTS SHALL CONFORM TO THE REQUIREMENTS OF AASHTO M291M. BOLTS, NUTS AND WASHERS SHALL BE GALVANIZED. AT THE CONTRACTOR'S OPTION, STAINLESS STEEL BOLTS, NUTS AND WASHERS MAY BE USED AS AN ALTERNATE FOR THE 22.23mm Ø GALVANIZED BOLTS, NUTS AND WASHERS. THEY SHALL CONFORM TO OR EXCEED THE MECHANICAL REQUIREMENTS OF ASTM A307. THE USE OF THIS ALTERNATE SHALL BE APPROVED BY THE ENGINEER.

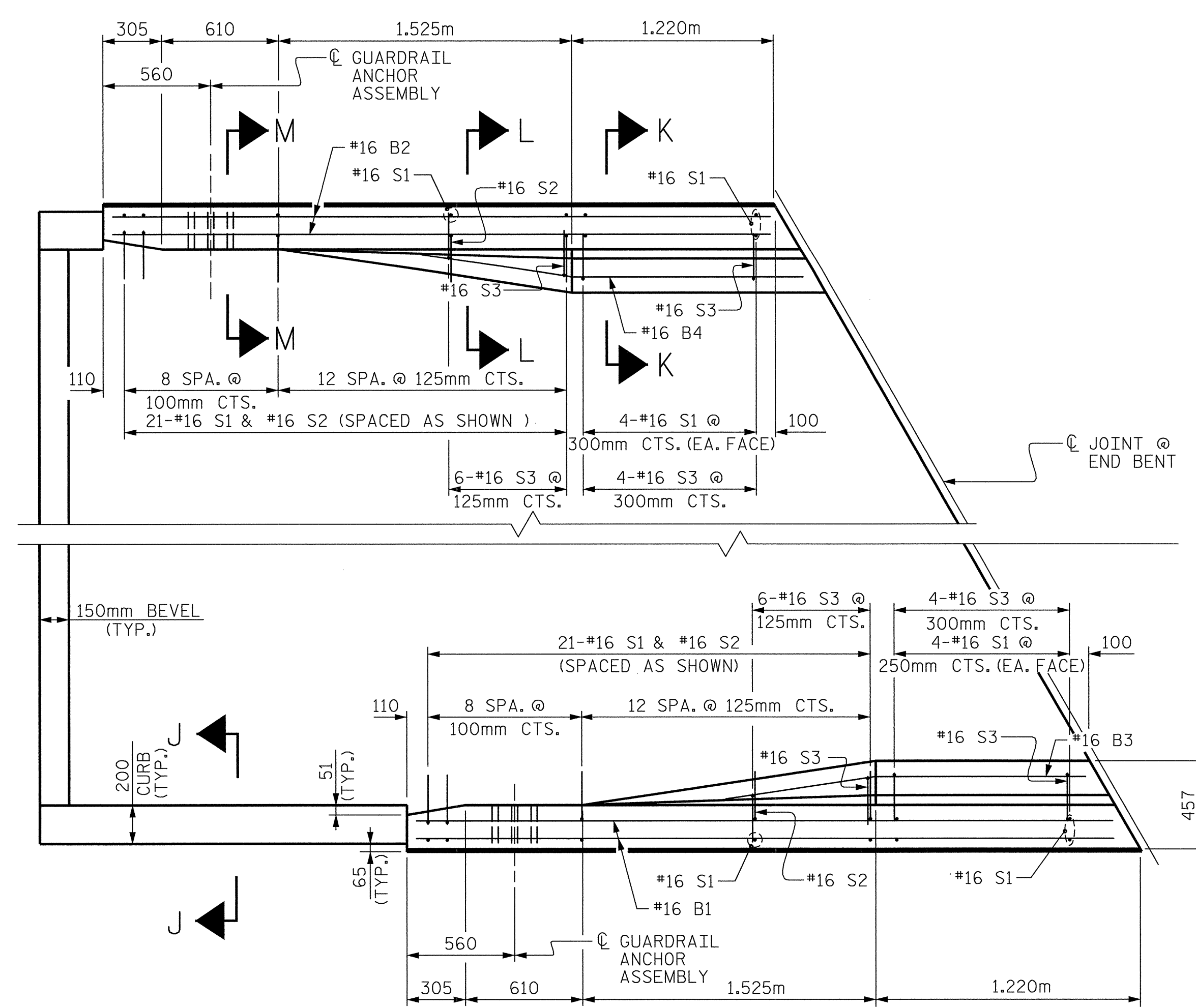
AFTER INSTALLATION, THE EXPOSED THREAD OF THE BOLT SHALL BE BURRED WITH A SHARP POINTED TOOL.

THE COST OF THE GUARDRAIL ANCHOR ASSEMBLIES WITH BOLTS, NUTS AND WASHERS COMPLETE IN PLACE, SHALL BE INCLUDED IN THE LUMP SUM CONTRACT PRICE BID FOR BRIDGE APPROACH SLABS.

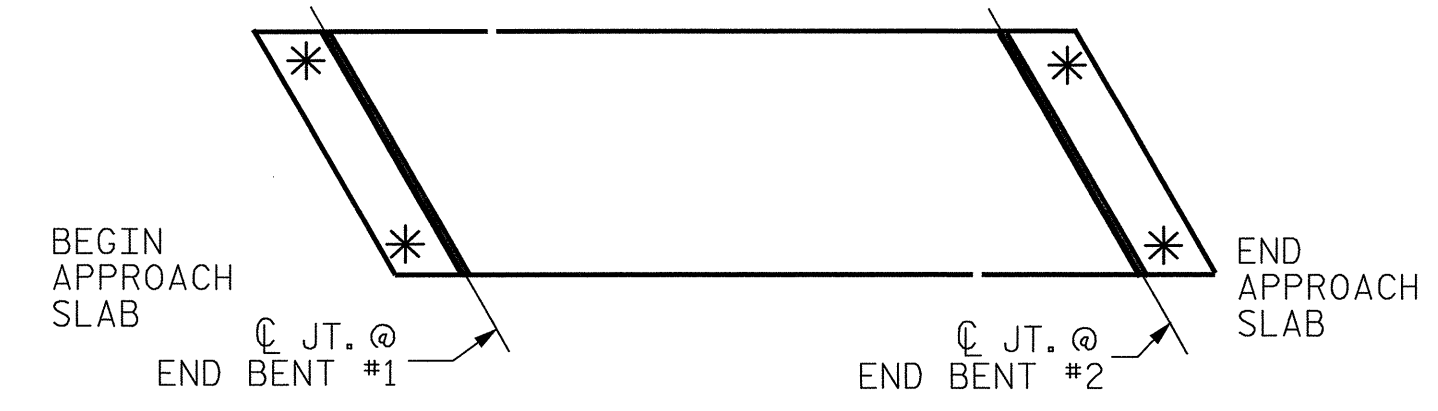
THE 32mm Ø HOLES SHALL BE FORMED OR DRILLED WITH A CORE BIT. IMPACT TOOLS WILL NOT BE PERMITTED. ANY CONCRETE DAMAGED BY THIS WORK SHALL BE REPAIRED TO THE SATISFACTION OF THE ENGINEER.



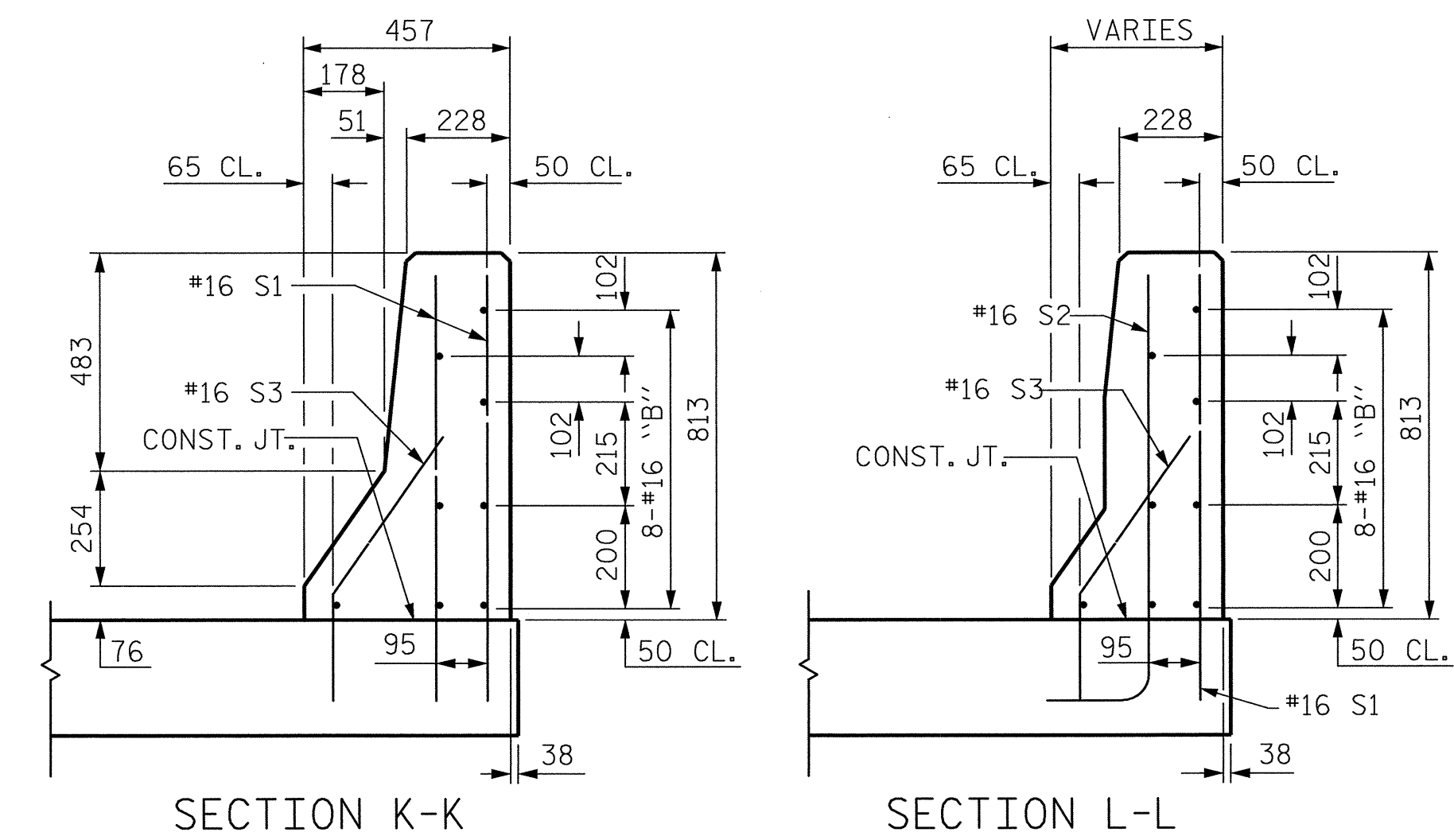
PLAN SECTION E-E  
GUARDRAIL ANCHOR ASSEMBLY DETAILS



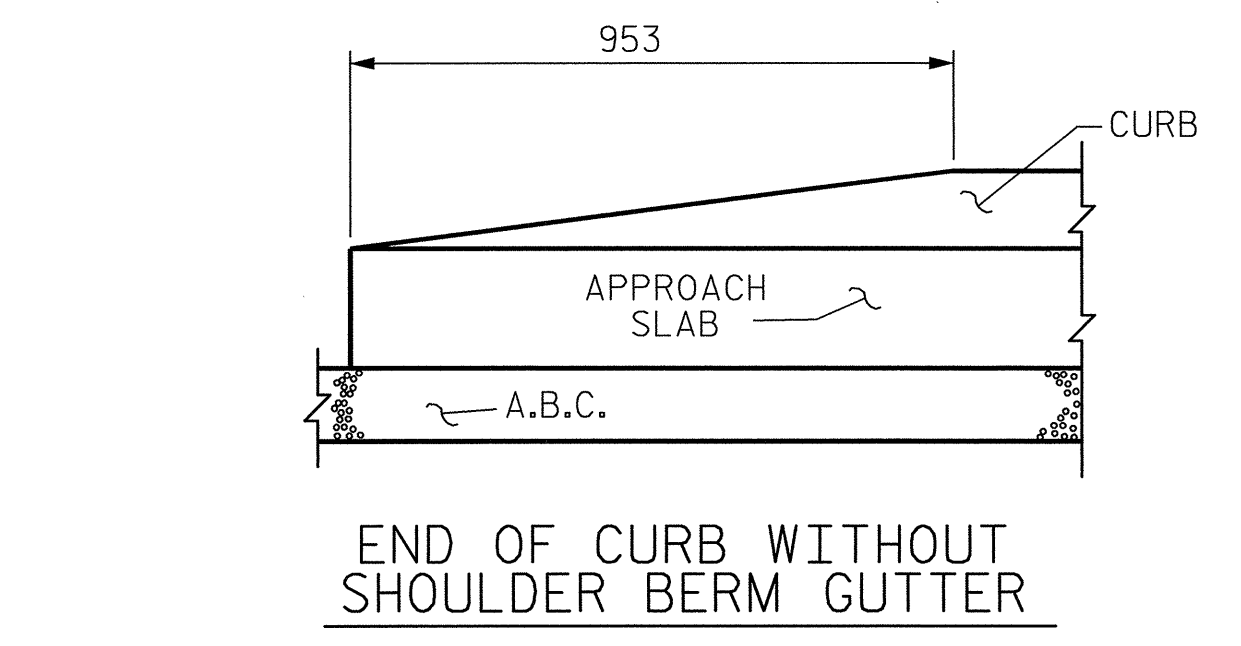
PLAN  
BEGIN APPROACH SLAB SHOWN, END APPROACH SLAB SIMILAR



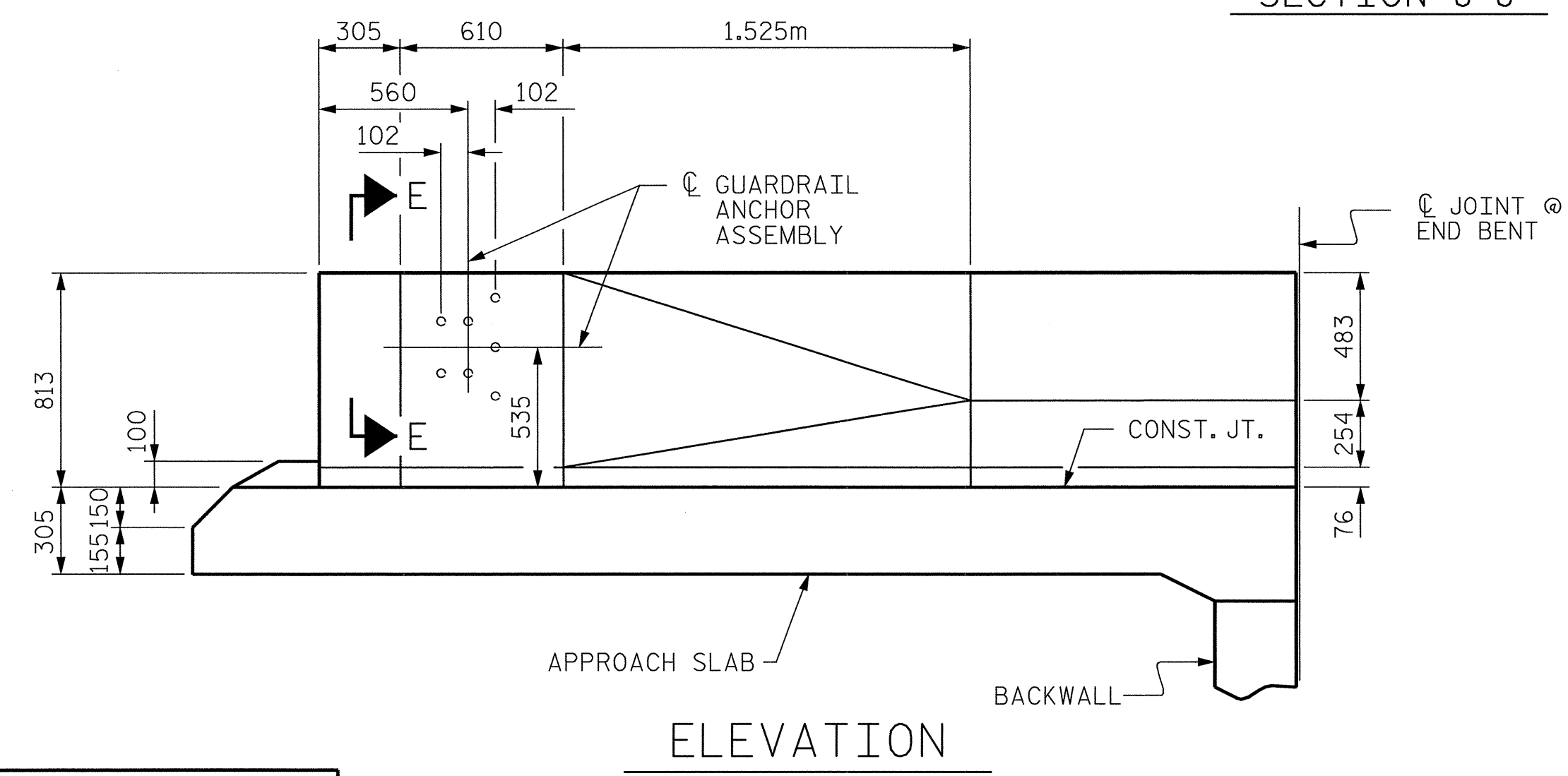
SKETCH SHOWING POINTS OF ATTACHMENT  
\* INDICATES POINTS OF ATTACHMENT



SECTION K-K SECTION L-L SECTION M-M  
END VIEW



CURB DETAILS



ELEVATION

PROJECT NO. R-252AB  
JOHNSTON COUNTY  
STATION: 40+96.000 -L- P.O.C.

METRIC CORPORATION  
75 Beattie Place, Suite 400  
Greenville, SC 29601 (864) 234-0866

STATE OF NORTH CAROLINA  
DEPARTMENT OF TRANSPORTATION  
RALEIGH

STANDARD  
BRIDGE APPROACH SLAB  
DETAILS FOR RIGIDPAVEMENT  
WITH BARRIER RAIL  
(RIGHT LANE)

REVISIONS

NO.	BY:	DATE:	NO.	BY:	DATE:
1			3		
2			4		

SHEET NO. 5-374  
TOTAL SHEETS 429

ASSEMBLED BY : M.L. MARLEY DATE : 12/01  
CHECKED BY : D.B. HOFF DATE : 12/01  
DRAWN BY : RWW 8/01  
CHECKED BY : LES 8/01

g:\04\10125\bridge\steel\right (EBL)\Final\Box6am(eb).dgn  
3/17/2005 10:39:10 AM