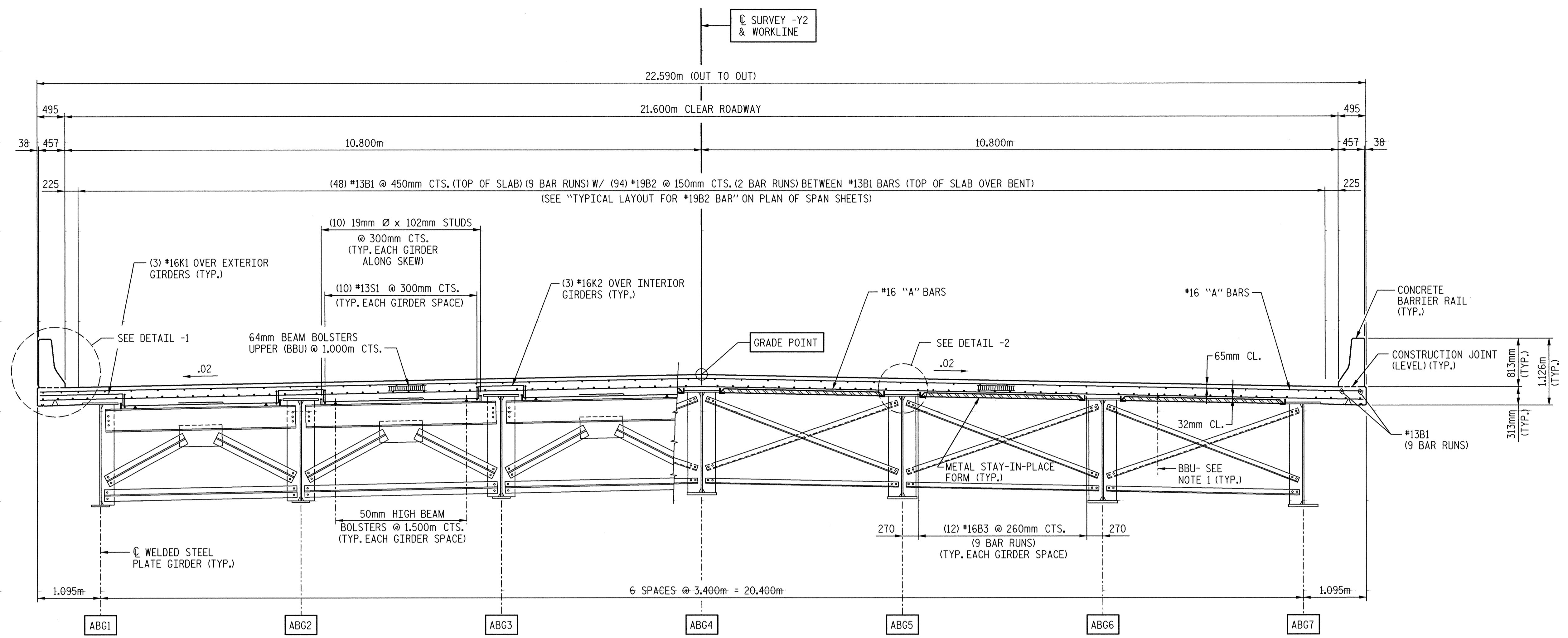


CL SURVEY -Y2 & WORKLINE



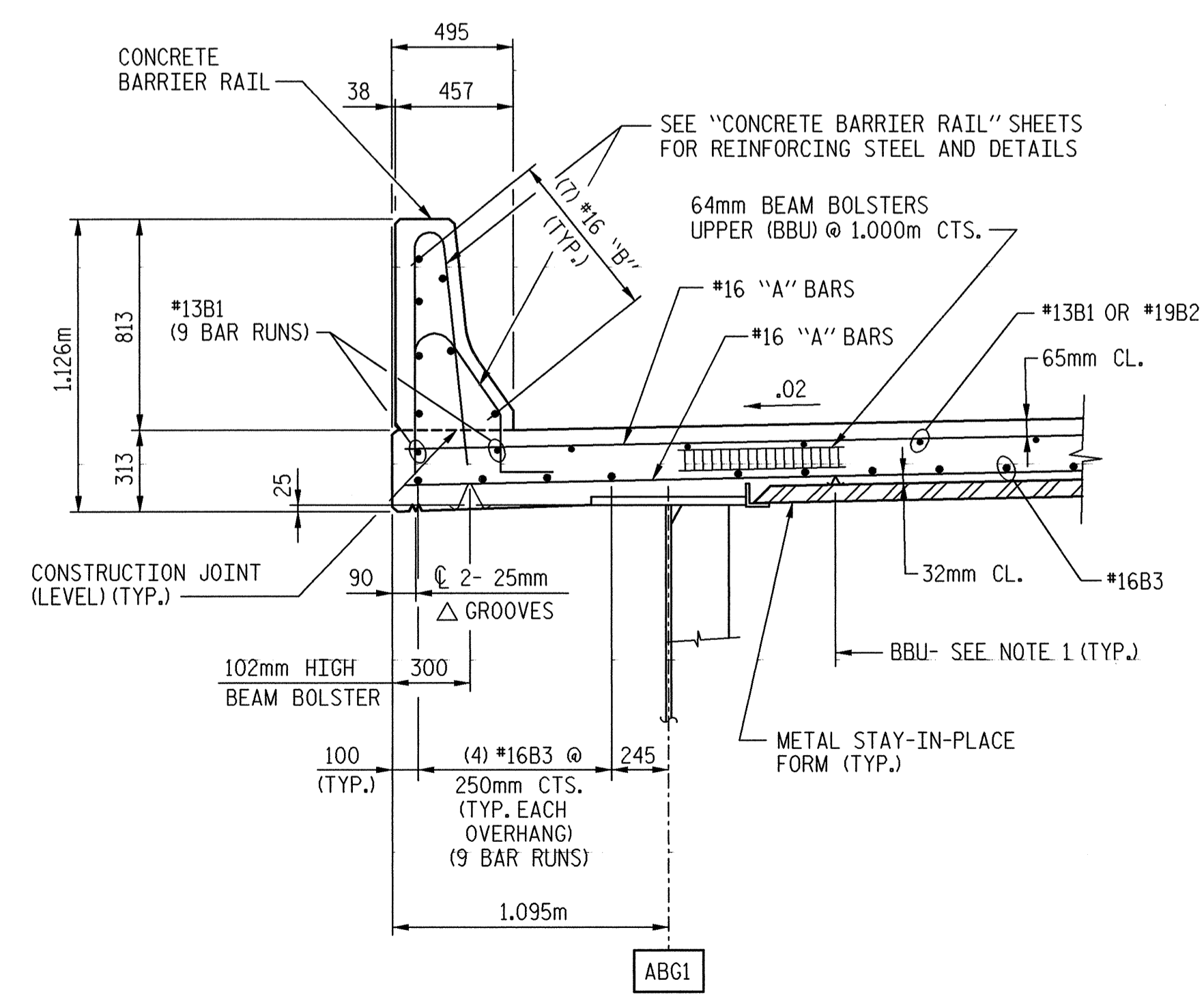
TYPICAL HALF SECTION AT END BENT CROSS FRAME

TYPICAL SECTION

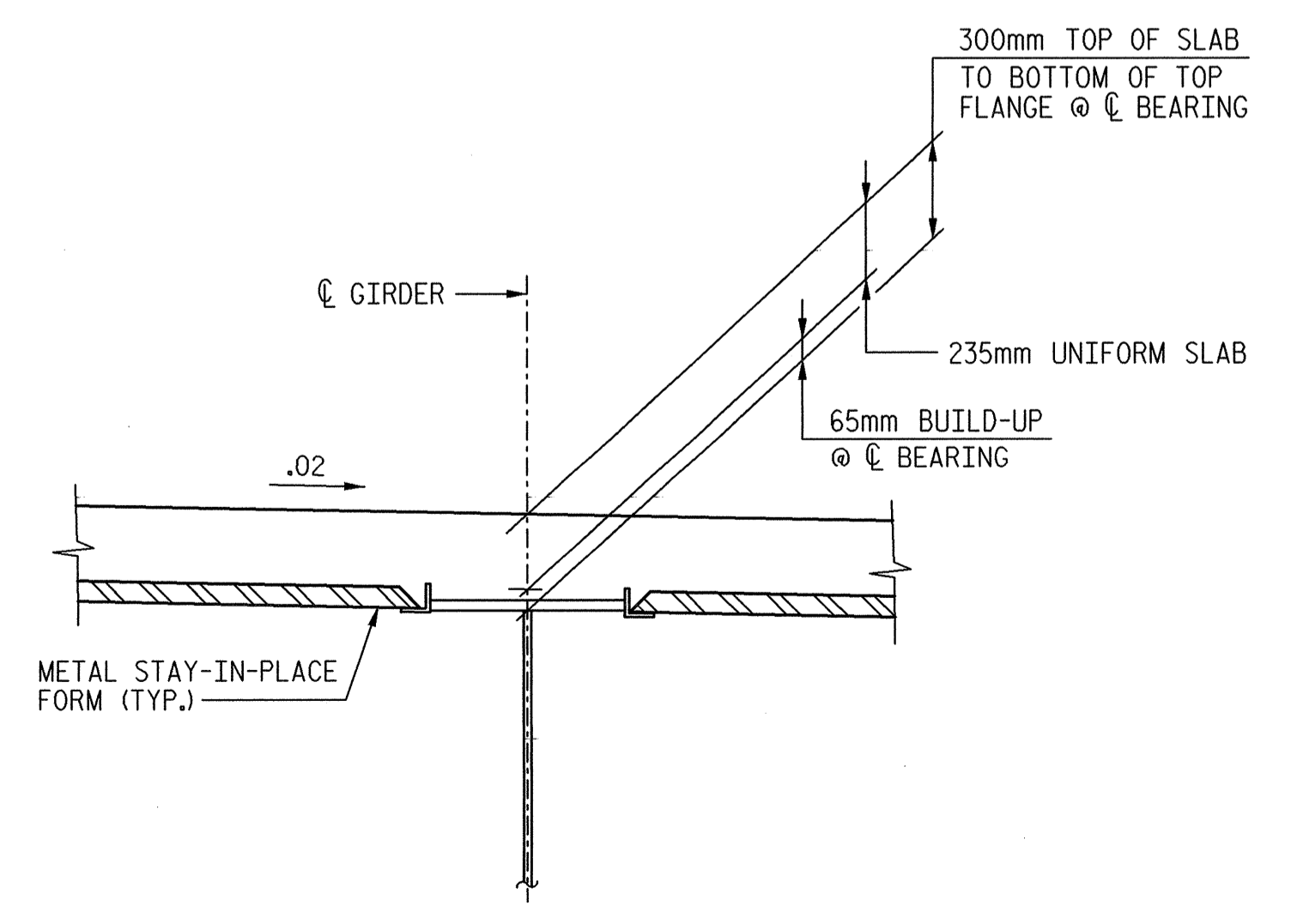
TYPICAL HALF SECTION AT INTERMEDIATE CROSS FRAME

NOTES:

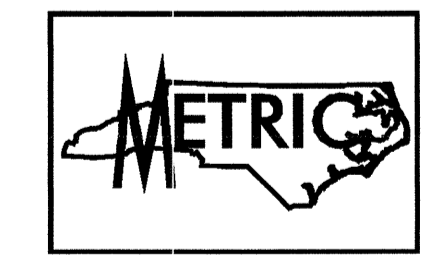
1. PROVIDE 32mm HIGH BEAM BOLSTERS UPPER AT 1.2m CTS. TOP OF THE METAL STAY-IN-PLACE FORMS TO SUPPORT THE BOTTOM MAT OF "A" BARS. WHEN USING REMOVABLE FORMS, PROVIDE CONTINUOUS HIGH CHAIRS FOR METAL DECK (C.H.C.M.) AT 1.2m CTS. WITH A HEIGHT TO SUPPORT THE BOTTOM MAT OF "A" BARS A CLEAR DISTANCE OF 65mm ABOVE THE TOP OF THE REMOVABLE FORM.
2. STRUCTURAL STEEL ERECTION IN A CONTINUOUS UNIT SHALL BE COMPLETE BEFORE FALSEWORK OR FORMS ARE PLACED ON THE UNIT.
3. THE CONTRACTOR MAY, WHEN NECESSARY, PROPOSE A SCHEME FOR AVOIDING INTERFERENCE BETWEEN METAL STAY-IN-PLACE FORM SUPPORTS OR FORMS AND GIRDER STIFFENER OR CONNECTOR PLATES. THE PROPOSAL SHALL BE INDICATED, AS APPROPRIATE, ON EITHER THE STEEL WORKING DRAWINGS OR THE METAL STAY-IN-PLACE FORM WORKING DRAWINGS.
4. METAL STAY-IN-PLACE FORMS AND FALSEWORK SHALL NOT BE WELDED TO GIRDER FLANGES IN THE ZONES REQUIRING CHARPY V-NOTCH TEST. SEE "STRUCTURAL STEEL DETAILS" SHEET.
5. PREVIOUSLY CAST CONCRETE IN A CONTINUOUS UNIT SHALL HAVE ATTAINED A MINIMUM COMPRESSIVE STRENGTH OF 20.7 MPa BEFORE ADDITIONAL CONCRETE IS CAST IN THE UNIT.
6. THE CONTRACTOR SHALL ADJUST THE GIRDER BUILD-UPS AS NECESSARY TO INCORPORATE A MAXIMUM PERMISSIBLE VARIATION IN THE POT BEARING DEPTH OF 13mm, SEE SPECIAL PROVISIONS FOR POT BEARINGS.



DETAIL -1

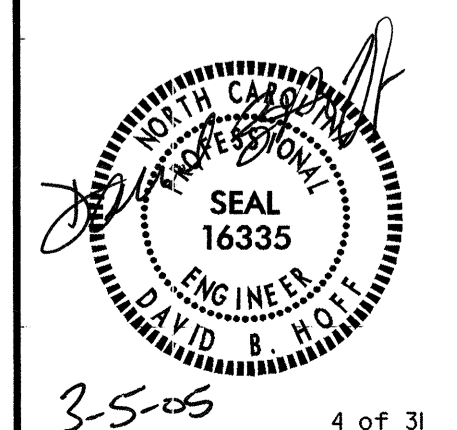


DETAIL -2



PROJECT NO. R-252AB  
 JOHNSTON COUNTY  
 STATION: 52+34.693 -L- = 18+60.011 -Y2-

TRANSYSTEMS CORPORATION  
 75 Beattie Place, Suite 400  
 Greenville, SC 29601 (864) 234-0866



STATE OF NORTH CAROLINA  
 DEPARTMENT OF TRANSPORTATION  
 RALEIGH  
 SUPERSTRUCTURE  
 TYPICAL SECTION  
 AND DETAILS

REVISIONS						SHEET NO.
NO.	BY:	DATE:	NO.	BY:	DATE:	
1			3			5-402
2			4			TOTAL SHEETS 429

DRAWN BY : M. T. BELISLE DATE : 4/01  
 CHECKED BY : D. B. HOFF DATE : 10/01

g:\v04\0125\Brdge\State\Final\11.25.03\1004\typsec.dgn  
 3/4/2005 2:38:27 PM

3-5-05 4 of 31