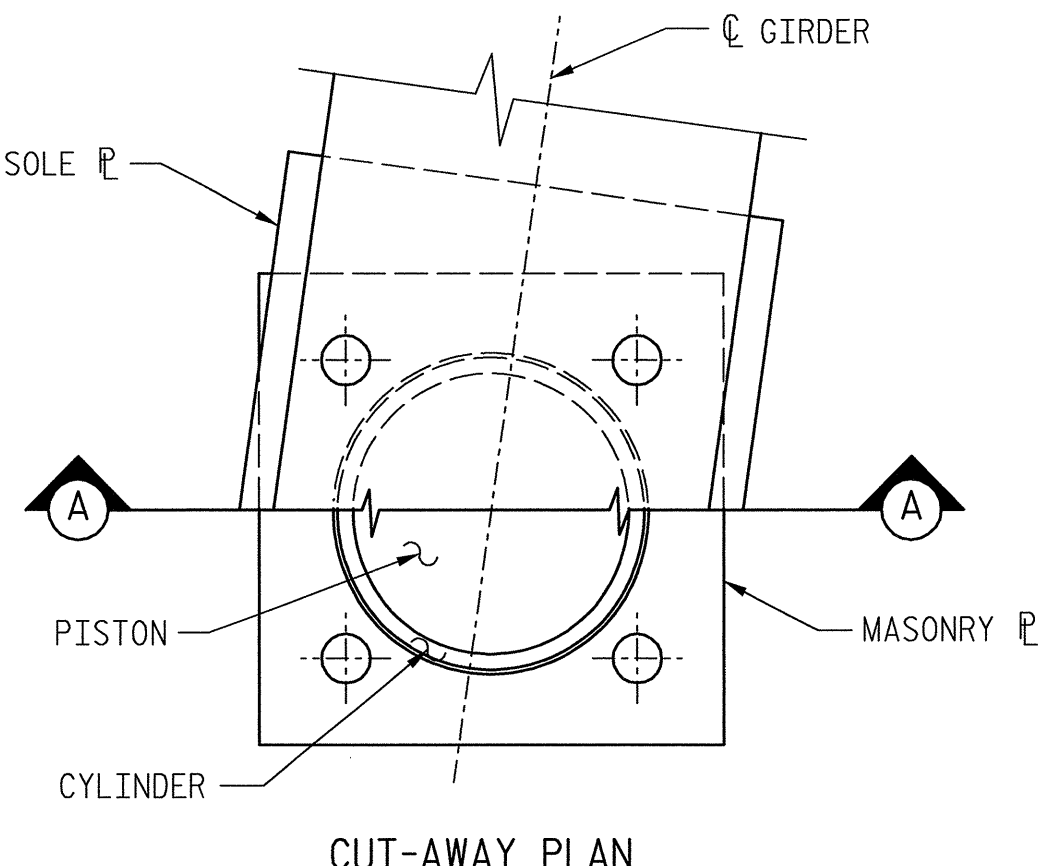


END VIEW



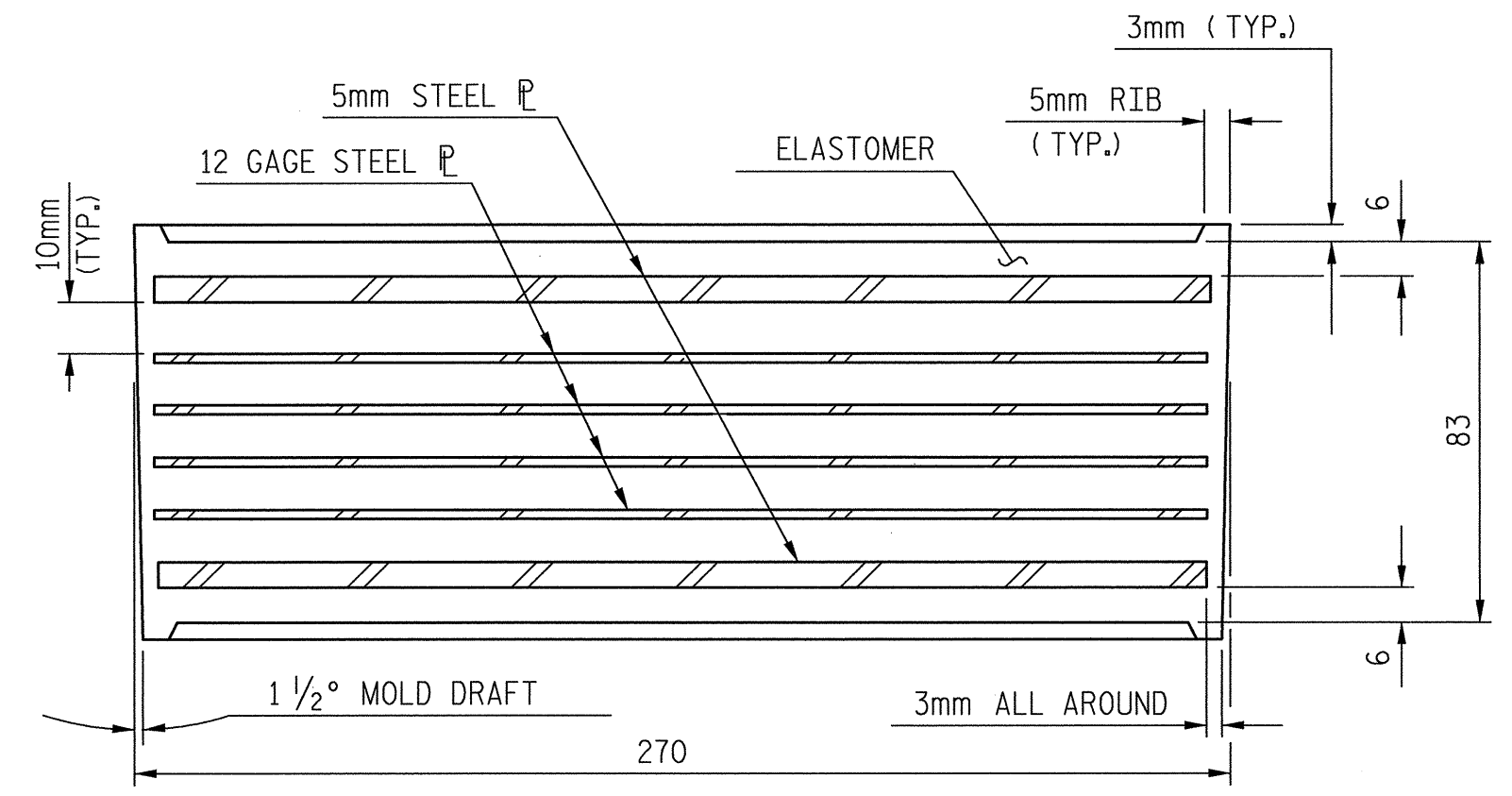
CUT-AWAY PLAN

**NOTES (ELASTOMERIC BEARINGS):**

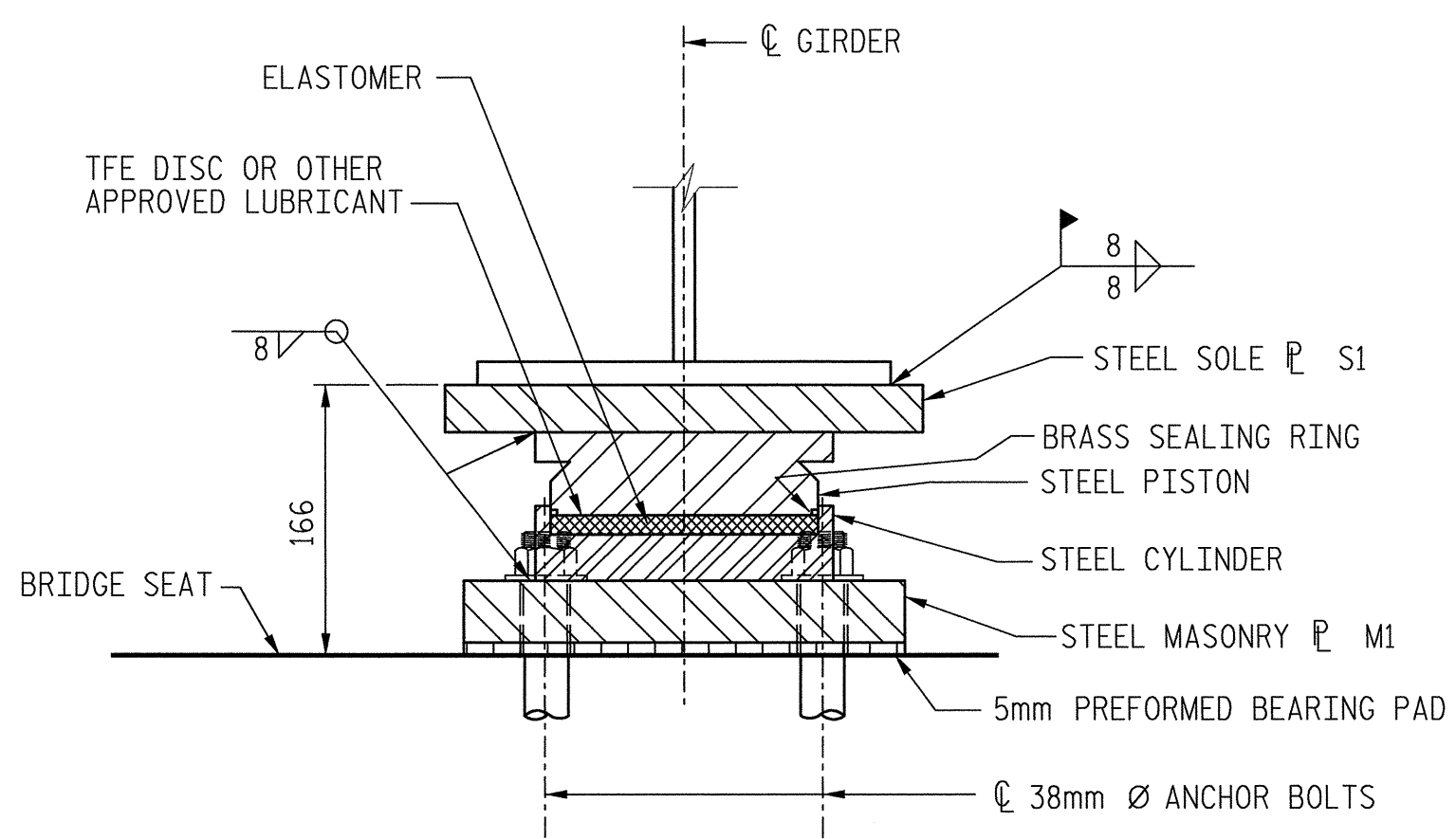
1. ALL SURFACES OF BEARING PLATES SHALL BE SMOOTH AND STRAIGHT.
2. WHEN WELDING THE SOLE PLATE TO THE GIRDER, USE TEMPERATURE INDICATING WAX PENS, OR OTHER SUITABLE MEANS, TO ENSURE THAT THE TEMPERATURE OF THE BEARING DOES NOT EXCEED 149° C. TEMPERATURES ABOVE THIS MAY DAMAGE THE ELASTOMER.
3. THE 51mm Ø PIPE SLEEVE SHALL BE CUT FROM SCHEDULE 40 P.V.C. PLASTIC PIPE. THE P.V.C. PLASTIC PIPE SHALL MEET THE REQUIREMENTS OF A.S.T.M. D1785.
4. THE PAYMENT FOR THE PIPE SLEEVES SHALL BE INCLUDED IN THE SEVERAL PAY ITEMS.
5. ~~FOR PAINTED STRUCTURAL STEEL (EXCLUDING AASHTO M270 GRADE 345W), SOLE PLATES, ANCHOR BOLTS, NUTS AND WASHERS SHALL BE GALVANIZED IN ACCORDANCE WITH THE STANDARD SPECIFICATIONS.~~
6. FOR AASHTO M270 GRADE 345W STRUCTURAL STEEL, SOLE PLATE SHALL BE AASHTO M270 GRADE 345W AND SHALL NOT BE GALVANIZED. ANCHOR BOLTS AND NUTS SHALL BE IN ACCORDANCE WITH THE STANDARD SPECIFICATIONS.
7. FOR ELASTOMERIC BEARINGS, SEE SPECIAL PROVISIONS.

**NOTES (POT BEARINGS):**

1. FOR POT BEARINGS, SEE SPECIAL PROVISIONS.
2. AT ALL POINTS OF SUPPORT AT BENT #1, NUTS FOR ANCHOR BOLTS SHALL BE TIGHTENED FINGER TIGHT AND GIVEN AN ADDITIONAL 1/4 TURN. THE TREAD OF THE NUT AND BOLT SHALL THEN BE BURRED WITH A SHARP POINTED TOOL.
3. WHEN WELDING THE SOLE PLATE TO THE GIRDER, USE TEMPERATURE INDICATING WAX PENS, OR OTHER SUITABLE MEANS, TO ENSURE THAT THE TEMPERATURE OF THE BEARING DOES NOT EXCEED 121° C. TEMPERATURES ABOVE THIS MAY DAMAGE THE TFE OR ELASTOMER.
4. FOR THERMAL SPRAYED COATINGS (METALLIZATION), SEE SPECIAL PROVISIONS.
5. ANCHOR BOLTS AND NUTS SHALL BE IN ACCORDANCE WITH THE STANDARD SPECIFICATION.
6. AT THE CONTRACTOR'S OPTION, POT BEARING DETAILS OTHER THAN THOSE SHOWN MAY BE SUBMITTED FOR APPROVAL.
7. AFTER BEARING ASSEMBLY IS IN PLACE AND ANCHOR BOLTS HAVE BEEN FINALLY POSITIONED, THEY SHALL BE GROUDED IN PLACES AS SHOWN.
8. ALL SURFACES OF BEARING PLATES SHALL BE SMOOTH AND STRAIGHT.
9. SOLE PLATES SHOULD BE WELDED TO GIRDER FLANGES AND ANCHOR BOLTS SHOULD BE GROUDED BEFORE FALSEWORK IS PLACED.
10. THE CONTRACTOR MAY SUBSTITUTE DISC BEARINGS FOR THE POT BEARINGS SHOWN. FOR OPTIONAL DISC BEARINGS, SEE SPECIAL PROVISIONS.



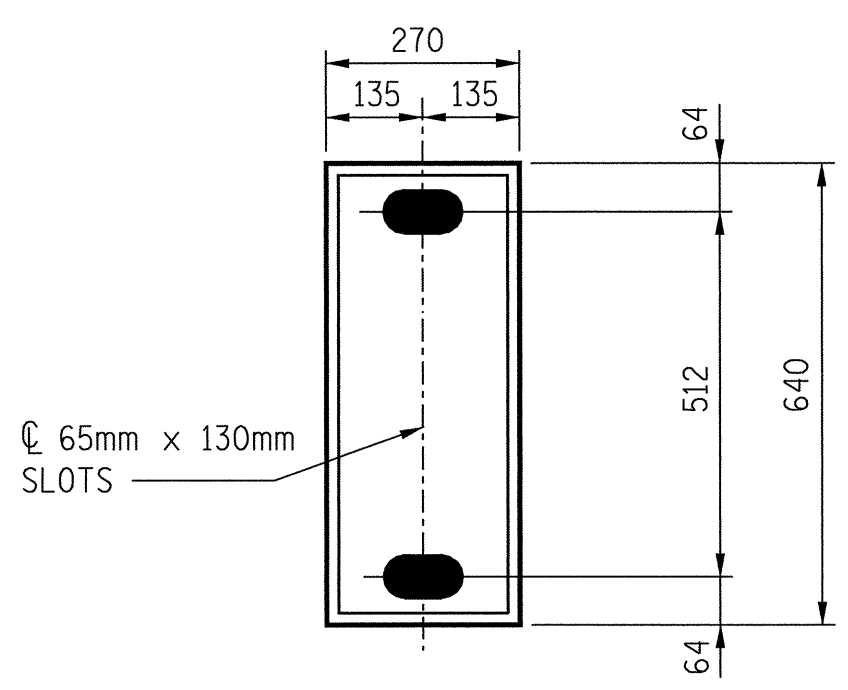
TYPICAL SECTION OF ELASTOMERIC BEARING



SECTION "A-A"

PB1, FIXED  
(7 REQUIRED)

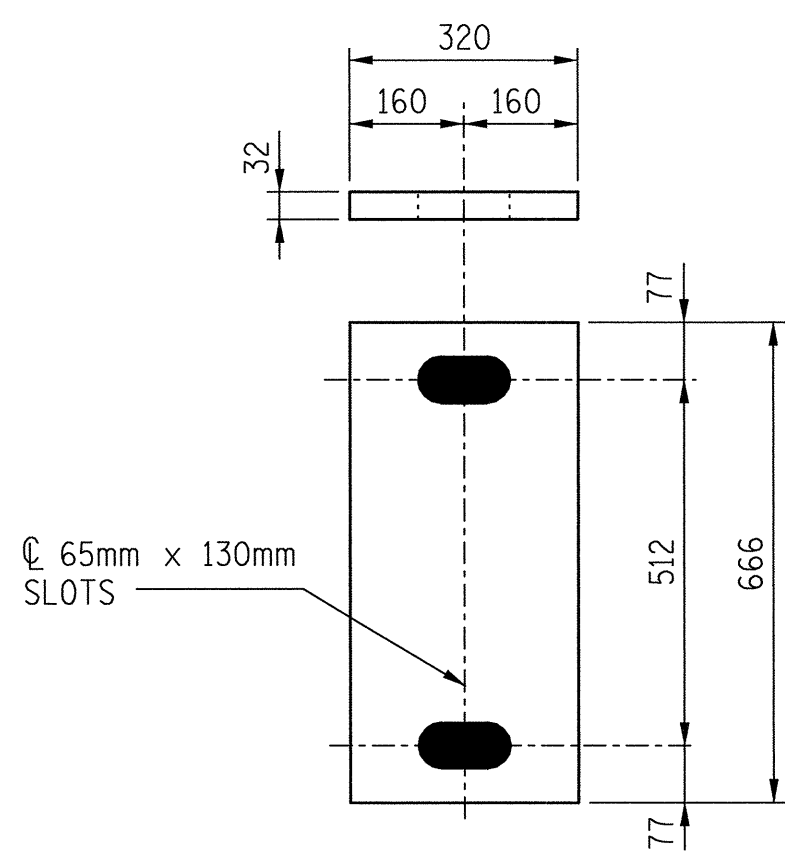
**POT BEARING DETAIL**



PLAN VIEW OF ELASTOMERIC BEARING

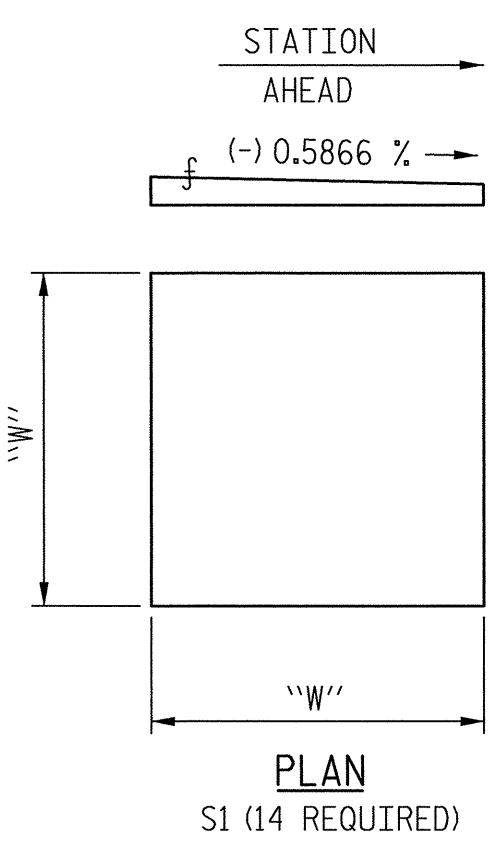
E1, EXPANSION  
(14 REQUIRED)

TYPE IV



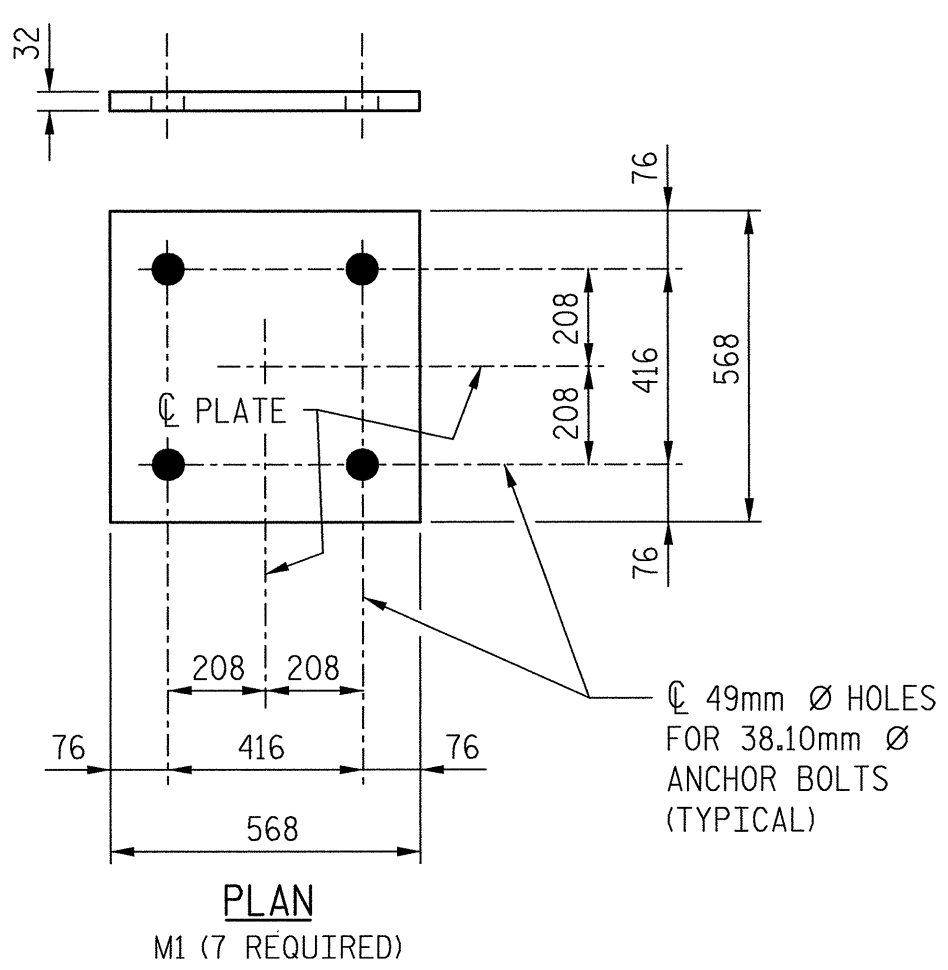
SOLE PLATE DETAILS ("P")

P1, EXPANSION  
(14 REQUIRED)



**SOLE PLATE DETAIL**

DIMENSIONS "W" & "T" ARE TO BE DETERMINED BY THE MANUFACTURER.



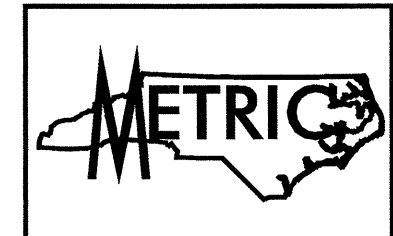
**MASONRY PLATE DETAIL**

- LOAD RATINGS -	
TYPE IV	MAX. D.L. + L.L. 809 kN

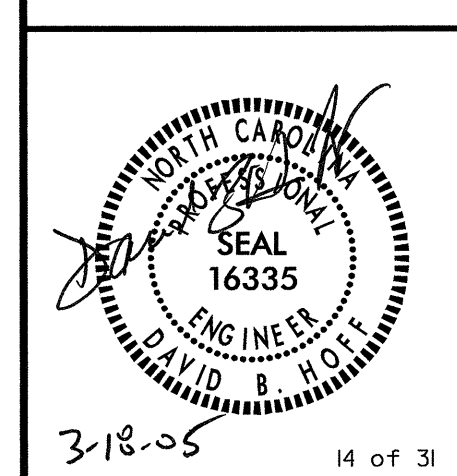
- TABLE FOR LOADS AND MOVEMENTS -						
BEARING	LOCATION	VERTICAL LOAD (kN)			LATERAL LOAD (kN)	TOTAL MOVEMENT (mm)
		DEAD	LIVE *	TOTAL		
PB1	BENT #1	1465	553	2018	293	0

\*NO IMPACT LOADING

PROJECT NO. R-2552AB  
JOHNSTON COUNTY  
STATION: 52+34.693 -L- =  
18+60.011 -Y2-



TRANSYSTEMS CORPORATION  
75 Beattie Place, Suite 400  
Greenville, SC 29601 (864) 234-0866



STATE OF NORTH CAROLINA  
DEPARTMENT OF TRANSPORTATION  
RALEIGH  
SUPERSTRUCTURE  
POT BEARING &  
ELASTOMERIC BEARING  
DETAILS

REVISIONS						SHEET NO. 5-412 TOTAL SHEETS 429
NO.	BY:	DATE:	NO.	BY:	DATE:	
1			3			
2			4			

g:\G04\0125\Bridg\Stee\Final\11.25.03\1004brgs.dgn  
 3/17/2005 10:15:01 AM

DRAWN BY: M.T. BELISLE DATE: 4/01  
CHECKED BY: D.B. HOFF DATE: 12/01