

REINFORCING STEEL SCHEDULE					
SPANS "A" AND "B"					
BAR	NO.	SIZE	TYPE	LENGTH	WEIGHT
A3	498	#16	STR.	12.440	9614.8
A4	446	#16	STR.	10.740	7434.1
A301	2	#16	STR.	10.360	32.2
A302	2	#16	STR.	10.020	31.1
A303	2	#16	STR.	9.700	30.1
A304	2	#16	STR.	9.380	29.1
A305	2	#16	STR.	9.040	28.1
A306	2	#16	STR.	8.720	27.1
A307	2	#16	STR.	8.400	26.1
A308	2	#16	STR.	8.060	25.0
A309	2	#16	STR.	7.740	24.0
A310	2	#16	STR.	7.420	23.0
A311	2	#16	STR.	7.080	22.0
A312	2	#16	STR.	6.760	21.0
A313	2	#16	STR.	6.440	20.0
A314	2	#16	STR.	6.100	18.9
A315	2	#16	STR.	5.780	17.9
A316	2	#16	STR.	5.460	16.9
A317	2	#16	STR.	5.120	15.9
A318	2	#16	STR.	4.800	14.9
A319	2	#16	STR.	4.460	13.8
A320	2	#16	STR.	4.140	12.9
A321	2	#16	STR.	3.820	11.9
A322	2	#16	STR.	3.480	10.8
A323	2	#16	STR.	3.160	9.8
A324	2	#16	STR.	2.840	8.8
A325	2	#16	STR.	2.500	7.8
A326	2	#16	STR.	2.180	6.8
A327	2	#16	STR.	13.640	42.3
A328	2	#16	STR.	13.320	41.3
A329	2	#16	STR.	13.000	40.4
A330	2	#16	STR.	12.660	39.3
A331	2	#16	STR.	12.340	38.3
A332	2	#16	STR.	12.020	37.3
A333	2	#16	STR.	11.680	36.3
A334	2	#16	STR.	11.360	35.3
A335	2	#16	STR.	11.040	34.3
A336	2	#16	STR.	10.700	33.2
A337	2	#16	STR.	10.380	32.2
A338	2	#16	STR.	10.060	31.2
A339	2	#16	STR.	9.720	30.2
A340	2	#16	STR.	9.400	29.2
A341	2	#16	STR.	9.080	28.2
A342	2	#16	STR.	8.740	27.1
A343	2	#16	STR.	8.420	26.1
A344	2	#16	STR.	8.080	25.1
A345	2	#16	STR.	7.760	24.1
A346	2	#16	STR.	7.440	23.1
A347	2	#16	STR.	7.100	22.0
A348	2	#16	STR.	6.780	21.0
A349	2	#16	STR.	6.460	20.1
A350	2	#16	STR.	6.120	19.0
A351	2	#16	STR.	5.800	18.0
A352	2	#16	STR.	5.480	17.0
A353	2	#16	STR.	5.140	16.0
A354	2	#16	STR.	4.820	15.0
A355	2	#16	STR.	4.500	14.0
A356	2	#16	STR.	4.160	12.9
A357	2	#16	STR.	3.840	11.9
A358	2	#16	STR.	3.520	10.9
A359	2	#16	STR.	3.180	9.9
A360	2	#16	STR.	2.860	8.9
A361	10	#16	STR.	2.540	7.9
B3	400	#16	STR.	14940	9275

EPOXY COATED REINFORCING STEEL SCHEDULE					
SPANS "A" AND "B"					
BAR	NO.	SIZE	TYPE	LENGTH	WEIGHT
A1	498	#16	STR.	12.500	9661.2
A2	446	#16	STR.	10.800	7475.7
A101	2	#16	STR.	10.420	32.3
A102	2	#16	STR.	10.080	31.3
A103	2	#16	STR.	9.760	30.3
A104	2	#16	STR.	9.440	29.3
A105	2	#16	STR.	9.100	28.2
A106	2	#16	STR.	8.780	27.3
A107	2	#16	STR.	8.440	26.2
A108	2	#16	STR.	8.120	25.2
A109	2	#16	STR.	7.800	24.2
A110	2	#16	STR.	7.460	23.2
A111	2	#16	STR.	7.140	22.2
A112	2	#16	STR.	6.820	21.2
A113	2	#16	STR.	6.480	20.1
A114	2	#16	STR.	6.160	19.1
A115	2	#16	STR.	5.840	18.1
A116	2	#16	STR.	5.500	17.1
A117	2	#16	STR.	5.180	16.1
A118	2	#16	STR.	4.860	15.1
A119	2	#16	STR.	4.520	14.0
A120	2	#16	STR.	4.200	13.0
A121	2	#16	STR.	3.880	12.0
A122	2	#16	STR.	3.540	11.0
A123	2	#16	STR.	3.220	10.0
A124	2	#16	STR.	2.880	8.9
A125	2	#16	STR.	2.560	7.9
A126	2	#16	STR.	2.240	7.0
A127	2	#16	STR.	13.640	42.3
A128	2	#16	STR.	13.320	41.3
A129	2	#16	STR.	13.000	40.4
A130	2	#16	STR.	12.660	39.3
A131	2	#16	STR.	12.340	38.3
A132	2	#16	STR.	12.020	37.3
A133	2	#16	STR.	11.680	36.3
A134	2	#16	STR.	11.360	35.3
A135	2	#16	STR.	11.040	34.3
A136	2	#16	STR.	10.700	33.2
A137	2	#16	STR.	10.380	32.2
A138	2	#16	STR.	10.060	31.2
A139	2	#16	STR.	9.720	30.2
A140	2	#16	STR.	9.400	29.2
A141	2	#16	STR.	9.080	28.2
A142	2	#16	STR.	8.740	27.1
A143	2	#16	STR.	8.420	26.1
A144	2	#16	STR.	8.080	25.1
A145	2	#16	STR.	7.760	24.1
A146	2	#16	STR.	7.440	23.1
A147	2	#16	STR.	7.100	22.0
A148	2	#16	STR.	6.780	21.0
A149	2	#16	STR.	6.460	20.1
A150	2	#16	STR.	6.120	19.0
A151	2	#16	STR.	5.800	18.0
A152	2	#16	STR.	5.480	17.0
A153	2	#16	STR.	5.140	16.0
A154	2	#16	STR.	4.820	15.0
A155	2	#16	STR.	4.500	14.0
A156	2	#16	STR.	4.160	12.9
A157	2	#16	STR.	3.840	11.9
A158	2	#16	STR.	3.520	10.9
A159	2	#16	STR.	3.180	9.9
A160	2	#16	STR.	2.860	8.9
A161	10	#16	STR.	2,540	7.9
B1	468	#13	STR.	8560	3982
B2	282	#19	STR.	11380	7172
G1	2	#16	STR.	13550	42
G2	2	#16	STR.	11710	36
K1	12	#16	①	3610	67
K2	30	#16	②	4960	231
S1	120	#13	③	1200	143

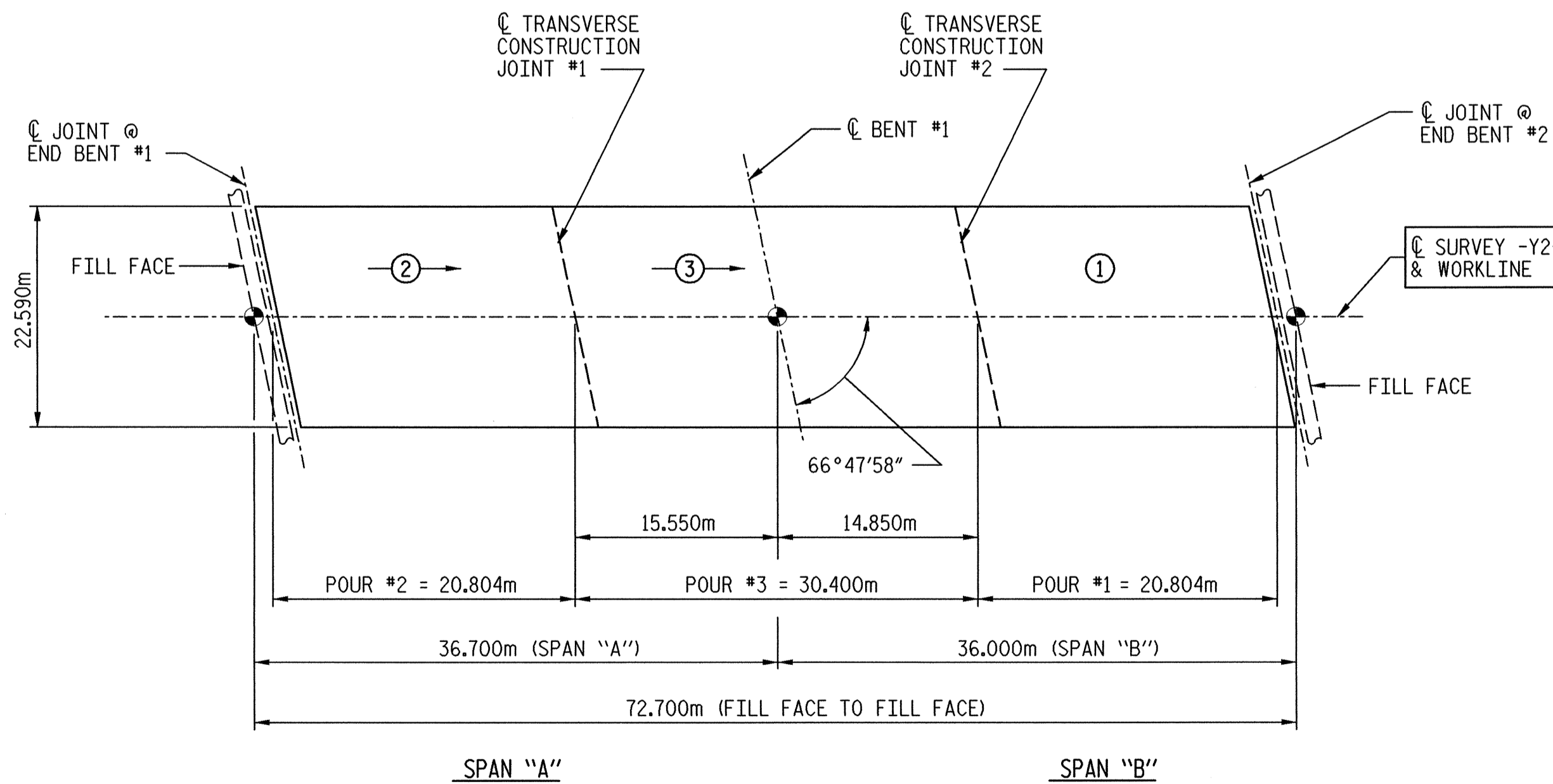
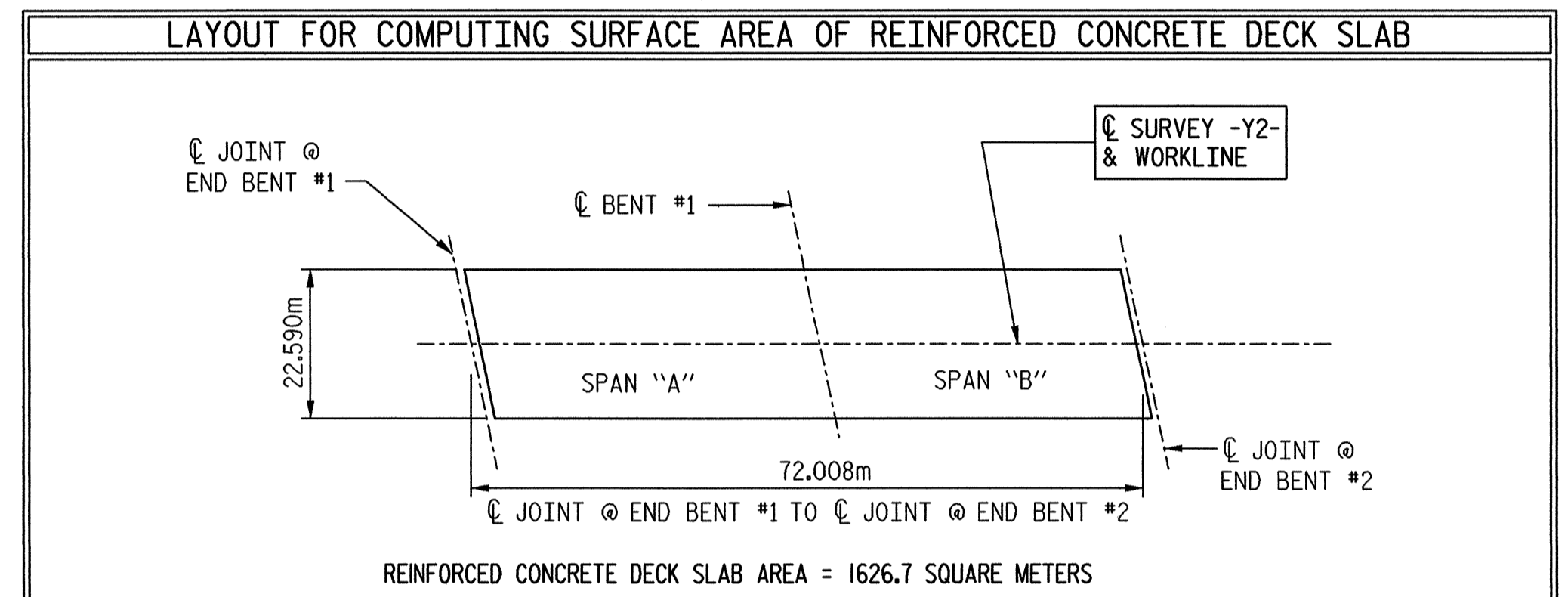
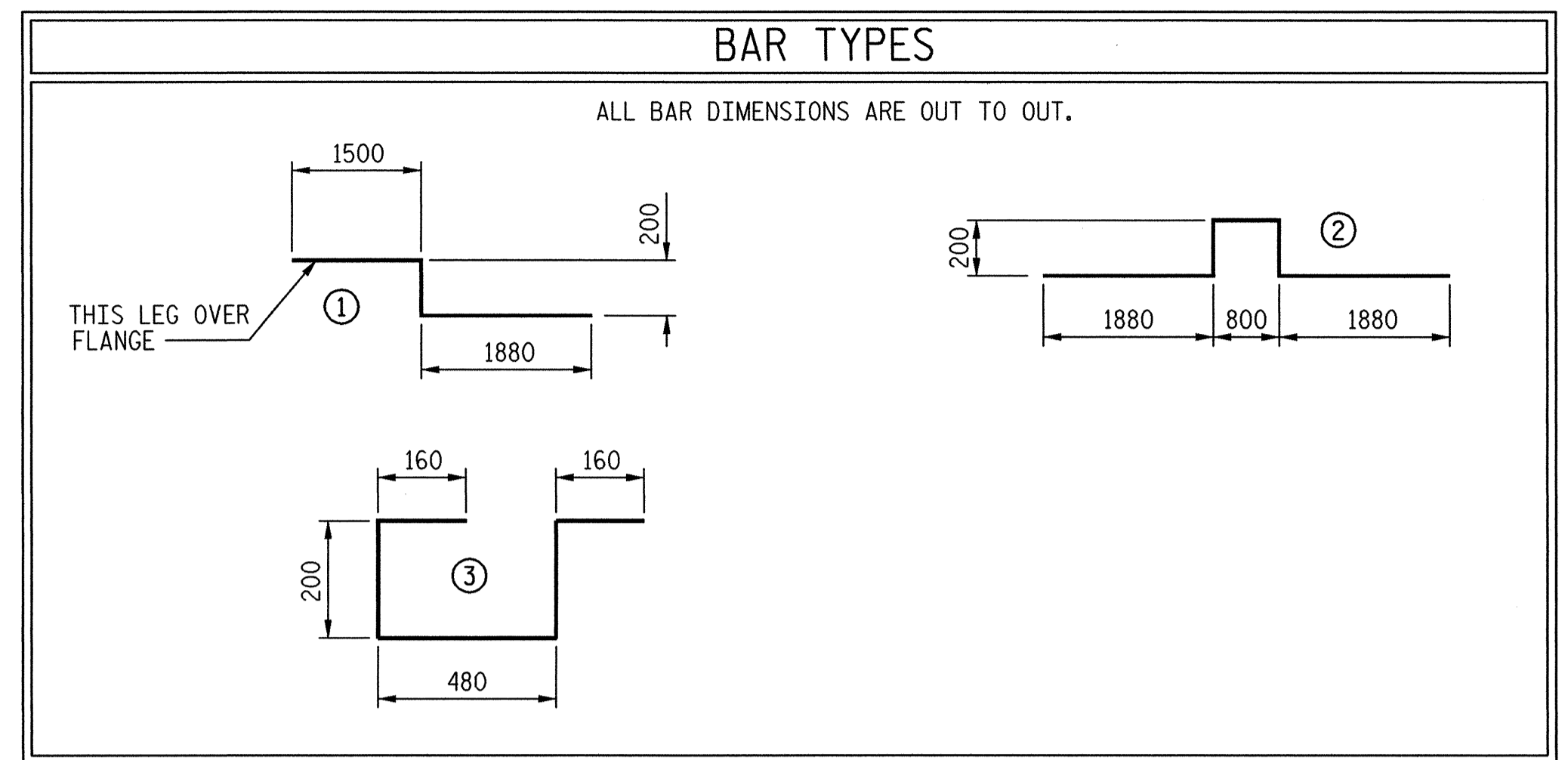
SUPERSTRUCTURE BILL OF MATERIAL				
SPANS	CLASS AA CONCRETE		REINFORCING STEEL	EPOXY COATED REINFORCING STEEL
	CUBIC METERS		kg.	kg.
"A" AND "B"			27706	30155
POUR #1	127.6			
POUR #2	127.6			
POUR #3	186.4			
* TOTAL	441.6		27706	30155

*QUANTITIES FOR BARRIER RAIL NOT INCLUDED.

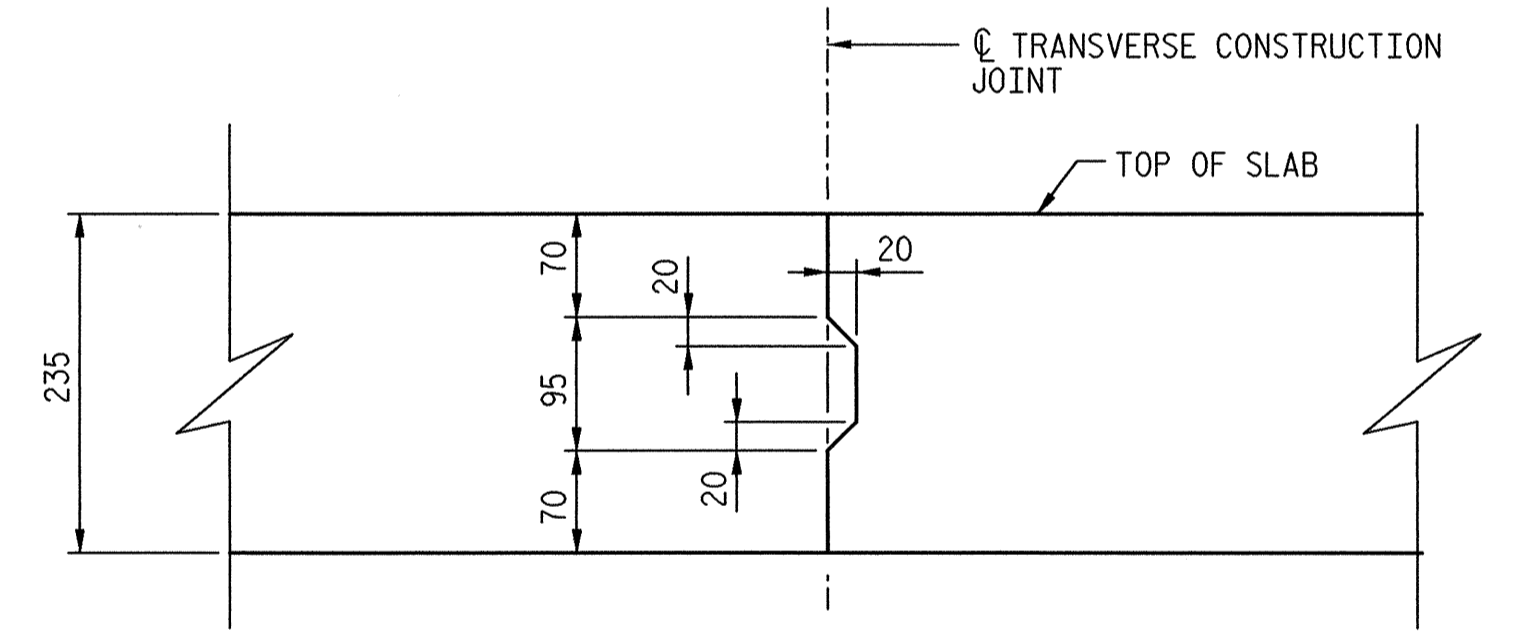
SUPERSTRUCTURE REINFORCING STEEL LENGTHS ARE BASED ON THE FOLLOWING MINIMUM SPLICE LENGTHS					
BAR SIZE	SUPERSTRUCTURE EXCEPT APPROACH SLABS, PARAPET, AND BARRIER RAIL		APPROACH SLABS		PARAPET AND BARRIER RAIL
	EPOXY COATED	UNCOATED	EPOXY COATED	UNCOATED	EPOXY COATED
#13	610	540	610	540	840
#16	770	660	770	660	1050
#19	920	790	1190	790	1330
#22	1580	1060			
#25	2080	1390			

ALL DIMENSIONS ARE IN MILLIMETERS

GROOVING BRIDGE FLOORS	
SUPERSTRUCTURE	= 1495.8m ²
APPROACH SLABS	= 505.0m ²
TOTAL	= 2000.8m ²

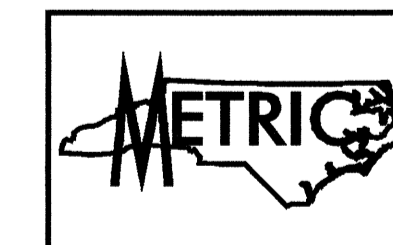


SKETCH SHOWING LOCATION OF TRANSVERSE CONSTRUCTION JOINTS AND ORDER OF POURS
 ② - INDICATES POUR NUMBER AND DIRECTION OF POUR

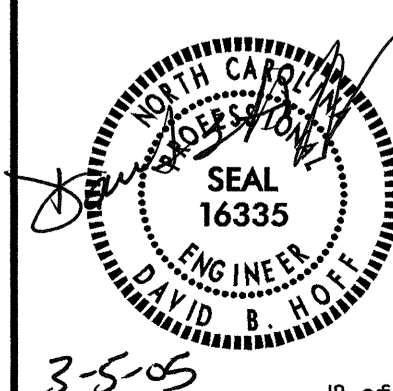


TRANSVERSE CONSTRUCTION JOINT IN DECK SLAB

PROJECT NO. R-2552AB
 JOHNSTON COUNTY
 STATION: 52+34.693 -L- = 18+60.011 -Y2-



TRANSYSTEMS CORPORATION
 75 Beattie Place, Suite 400
 Greenville, SC 29601 (864) 234-0866



STATE OF NORTH CAROLINA
 DEPARTMENT OF TRANSPORTATION
 RALEIGH
 SUPERSTRUCTURE
 BILL OF MATERIAL, TRANSVERSE CONSTRUCTION JOINT DETAILS AND ORDER OF POURS

REVISIONS						SHEET NO.
NO.	BY:	DATE:	NO.	BY:	DATE:	TOTAL SHEETS
1			3			5-416
2			4			429