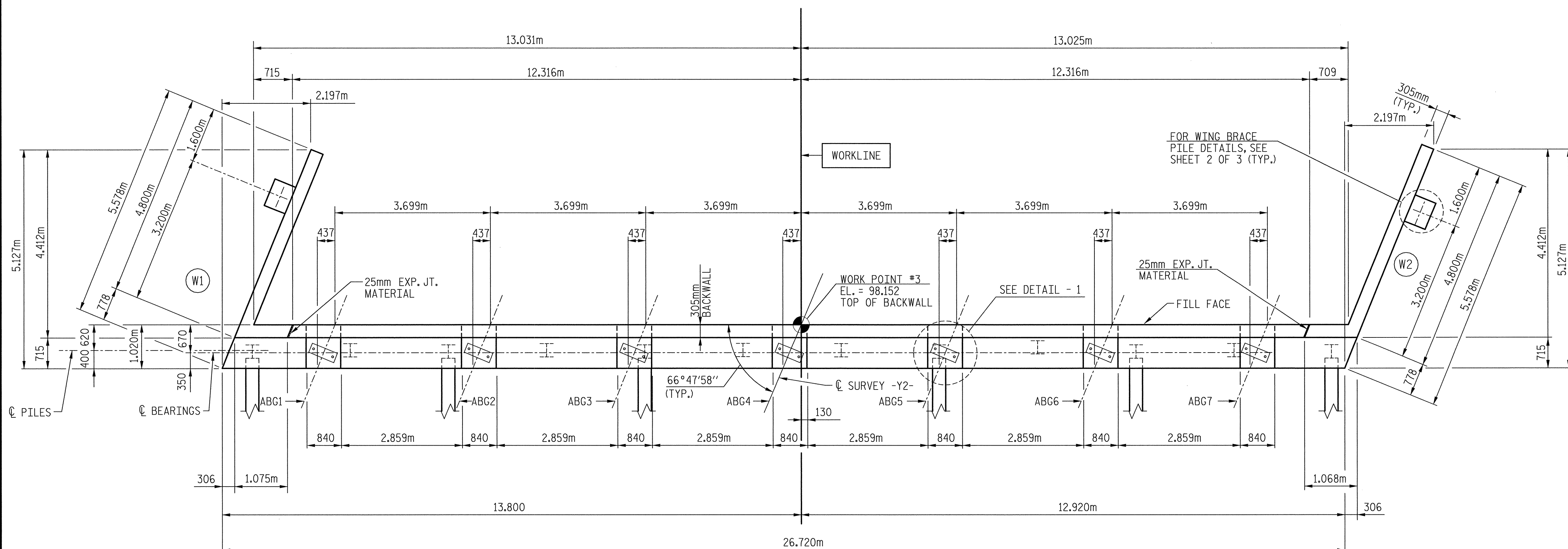
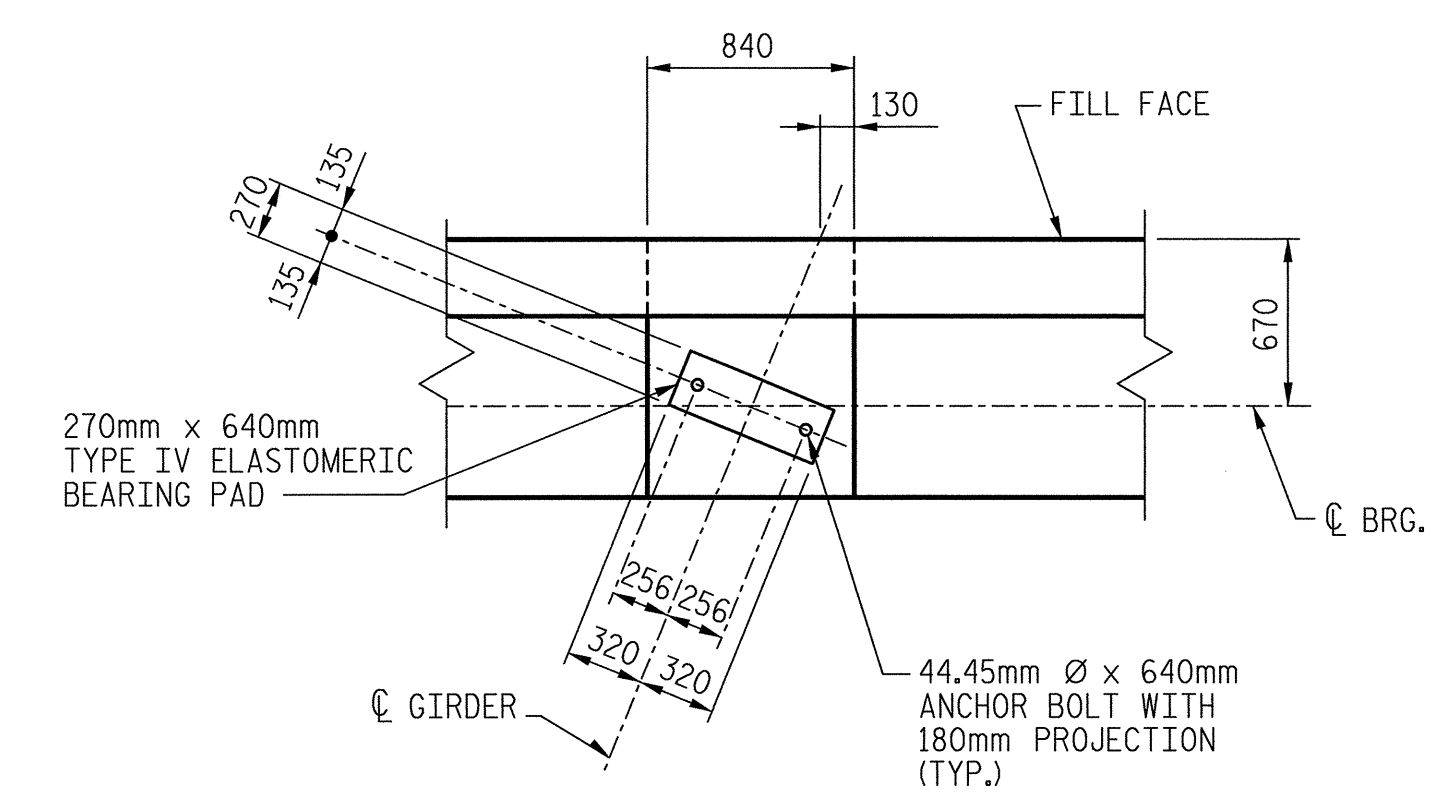


NOTES

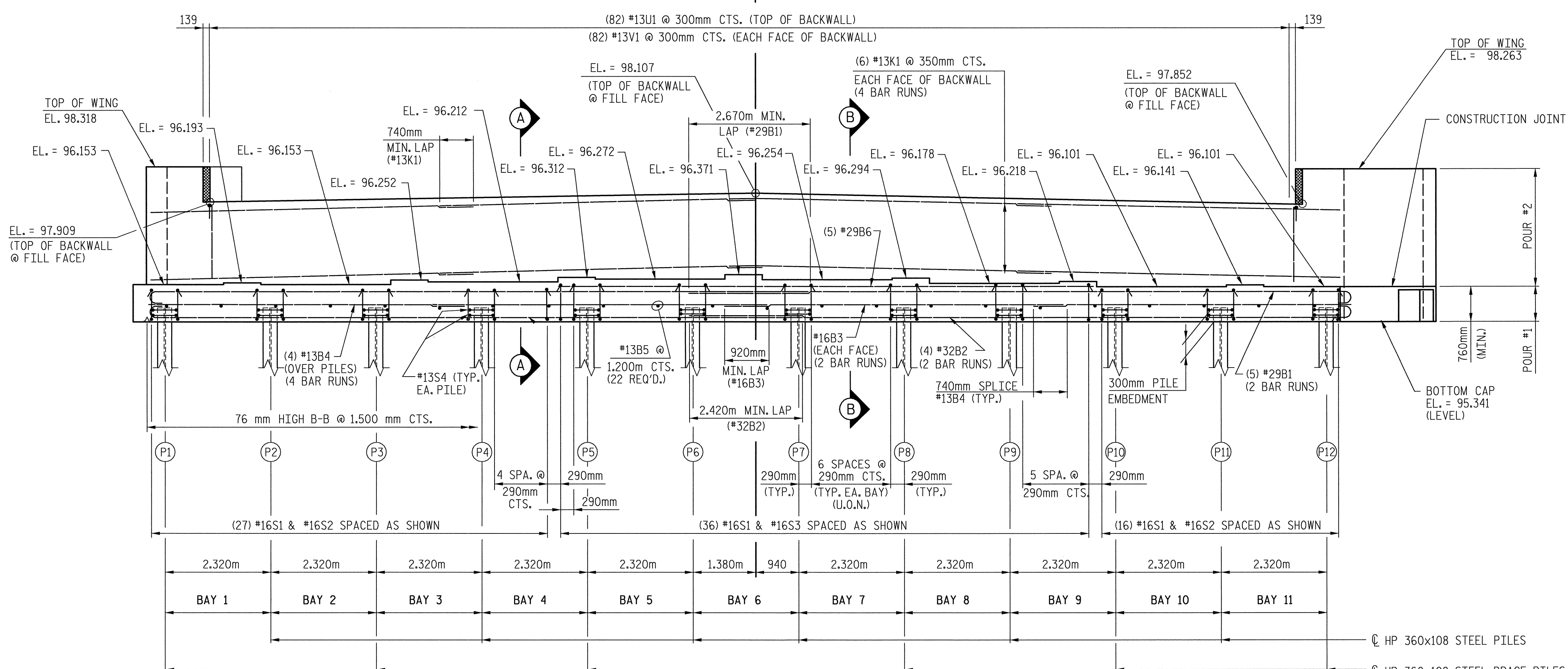
1. STIRRUPS IN CAP MAY BE SHIFTED AS NECESSARY TO CLEAR ANCHOR BOLTS.
2. FOR EPOXY PROTECTIVE COATING, SEE SPECIAL PROVISIONS.
3. BACKWALL SHALL BE PLACED BEFORE APPLYING THE EPOXY PROTECTIVE COATING.
4. THE TOP SURFACE AREAS OF THE END BENT CAP SHALL BE CURED IN ACCORDANCE WITH THE STANDARD SPECIFICATIONS EXCEPT THAT THE MEMBRANE CURING COMPOUND METHOD SHALL NOT BE USED.
5. THE TOP SURFACE OF THE END BENT CAP EXCEPT THE BRIDGE SEAT BUILDUPS SHALL BE SLOPED TRANSVERSELY FROM THE FILL FACE TO THE BACK FACE AT THE RATE OF 2 PERCENT BETWEEN BRIDGE SEATS.
6. FOR PILE SPLICE DETAILS, SEE SHEET 3 OF 3.
7. THE CONTRACTOR SHALL PROVIDE FOR INSTALLATION OF THE 102mm DIAMETER DRAIN PIPE THROUGH THE WING WALL AS REQUIRE FOR REINFORCED BRIDGE APPROACH FILLS, SEE THE ROADWAY PLANS. REINFORCING STEEL IN THE WING WALL MAY BE SHIFTED AS NECESSARY TO CLEAR THE DRAIN PIPE.



PLAN

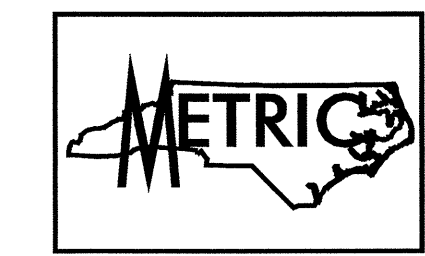


DETAIL #1

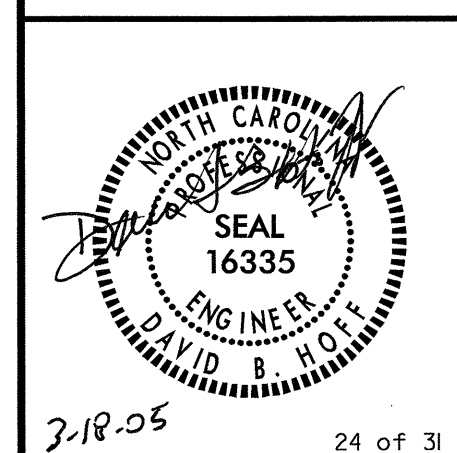


ELEVATION

PROJECT NO. R-252AB
 JOHNSTON COUNTY
 STATION: 52+34.693 -L- = 18+60.011 -Y2-
 SHEET 1 OF 3



TRANSYSTEMS CORPORATION
 75 Beattie Place, Suite 400
 Greenville, SC 29601 (864) 234-0866



STATE OF NORTH CAROLINA		DEPARTMENT OF TRANSPORTATION		RALEIGH	
SUBSTRUCTURE					
END BENT #2					
PLAN AND ELEVATION					
REVISIONS					
NO.	BY:	DATE:	NO.	BY:	DATE:
1			3		
2			4		
					SHEET NO.
					5-422
					TOTAL SHEETS
					429

DRAWN BY: J.C. PENDERGRAFT DATE: 11/01
 CHECKED BY: D.B. HOFF DATE: 12/01

g:\y\04\10125\bridge\site2\Final\11_25_03\1004eb2e.dgn
 3/17/2005
 10:15:28 AM