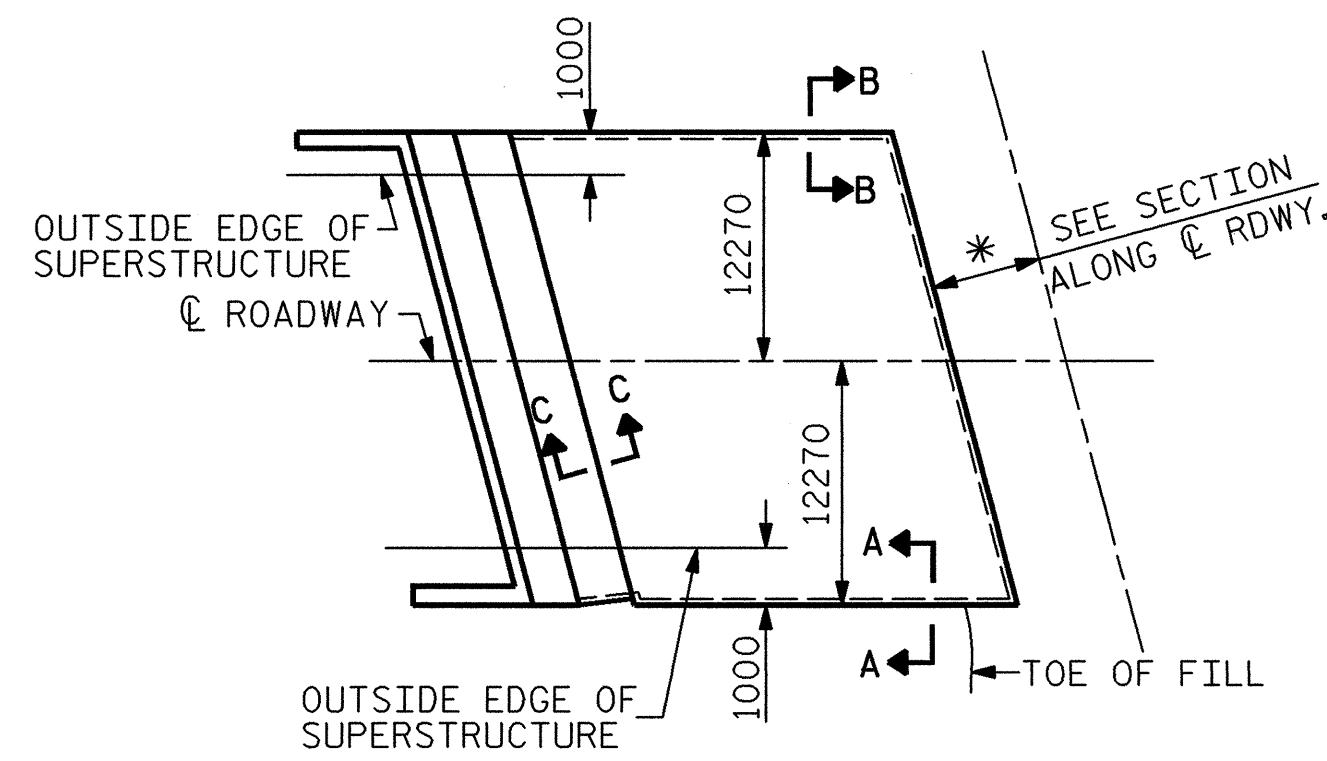


**PLAN - END BENT WITH SWEEP BACK WINGS - SKEWED**  
( 2:1 SLOPE )



**PLAN**

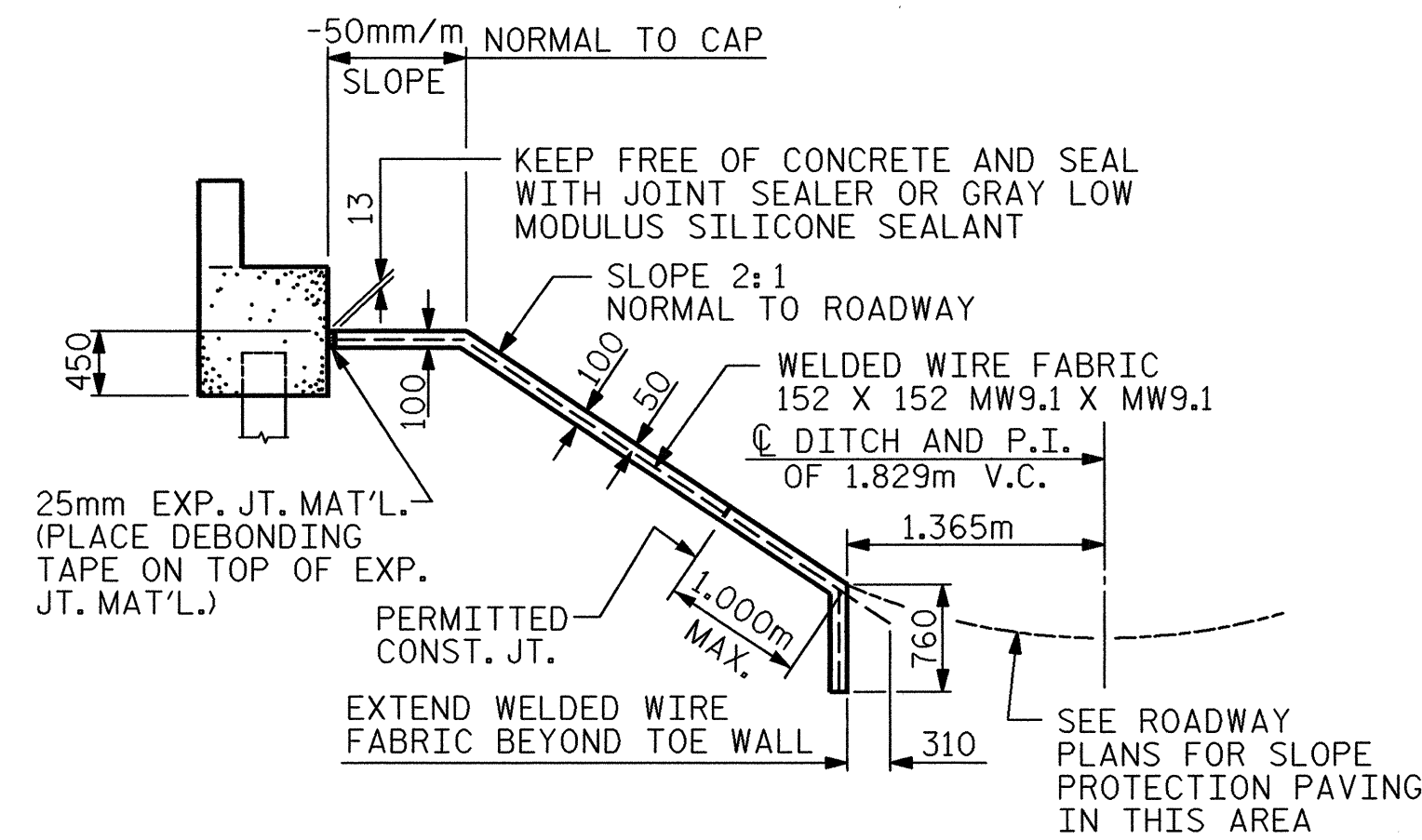
END BENT 1 SHOWN, END BENT 2 SIMILAR BY ROTATION

**GENERAL NOTES**

SLOPE PROTECTION SHALL BE PLACED UNDER THE ENDS OF THE BRIDGE AS SHOWN IN THE DETAILS. THE CONTRACTOR, AT HIS OPTION, MAY USE ALTERNATE "B" ONLY FOR HIGHWAY OVER HIGHWAY GRADE SEPARATIONS WITH 2:1 END BENT SLOPE IN RURAL, UNPOPULATED AREAS. STRAIGHT EDGING WILL NOT BE REQUIRED UNLESS, IN THE OPINION OF THE ENGINEER, VISUAL INSPECTION INDICATES A NEED FOR IT. METHOD OF MEASUREMENT AND BASIS OF PAYMENT SHALL BE AS PRESCRIBED IN SECTION 462 OF THE STANDARD SPECIFICATIONS. FOR BERM WIDTH, SEE GENERAL DRAWING.

**ALTERNATE "A"**

ALTERNATE "A" SHALL CONSIST OF 100mm POURED-IN-PLACE CONCRETE PAVING AS SHOWN IN THE DETAILS ON THIS SHEET. CONCRETE SHALL BE CLASS "B". THE CONCRETE SURFACE SHALL BE FLOATED WITH A WOODEN FLOAT AND FINISHED. WELDED WIRE FABRIC REINFORCING SHALL BE 152 X 152 - W9.1 X W9.1, 1520mm WIDE. SLOPE PROTECTION SHALL BE POURED IN 1520mm STRIPS AS SHOWN IN THE "POURING DETAIL" WITH 600mm LONG #13 BARS PLACED ALONG THE SLOPE BETWEEN STRIPS AT 450mm MAXIMUM SPACING. SLOPE PROTECTION MAY BE POURED IN ALTERNATE 1220mm AND 1520mm STRIPS AS SHOWN IN THE "OPTIONAL POURING DETAIL" WITH ADJACENT RUNS OF WELDED WIRE FABRIC LAPPING AT LEAST 152mm. THE COST OF THE WELDED WIRE FABRIC AND #13 BARS, IF USED, SHALL BE INCLUDED IN THE CONTRACT UNIT PRICE BID PER SQUARE METER FOR SLOPE PROTECTION.

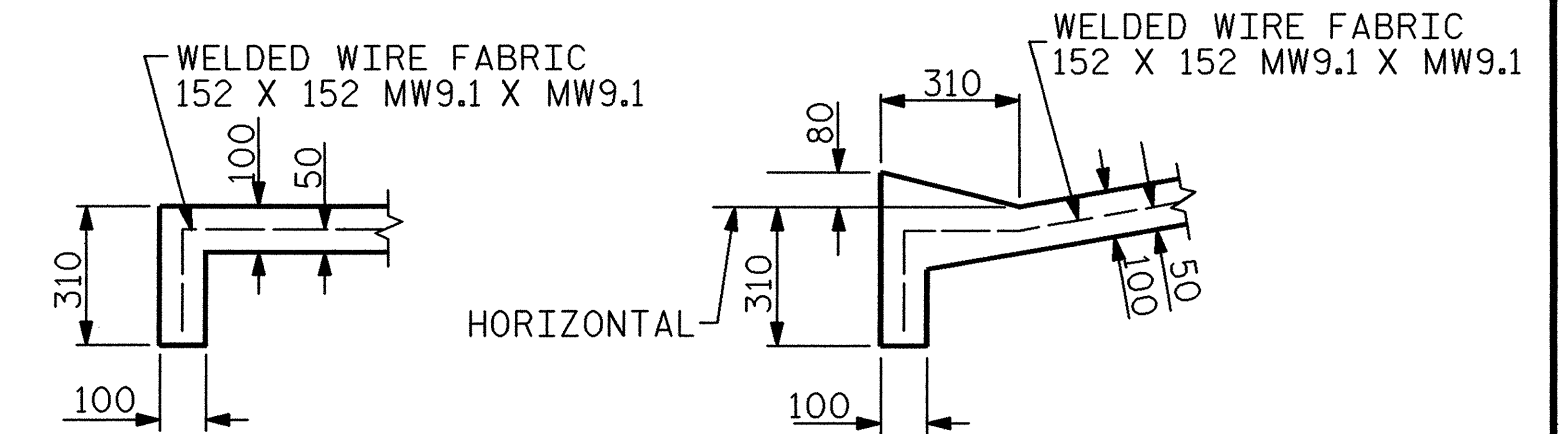


SECTION ALONG C.R.OADWAY WHEN FILL CATCHES IN DITCH

**DETAILS FOR ALTERNATE "A"**

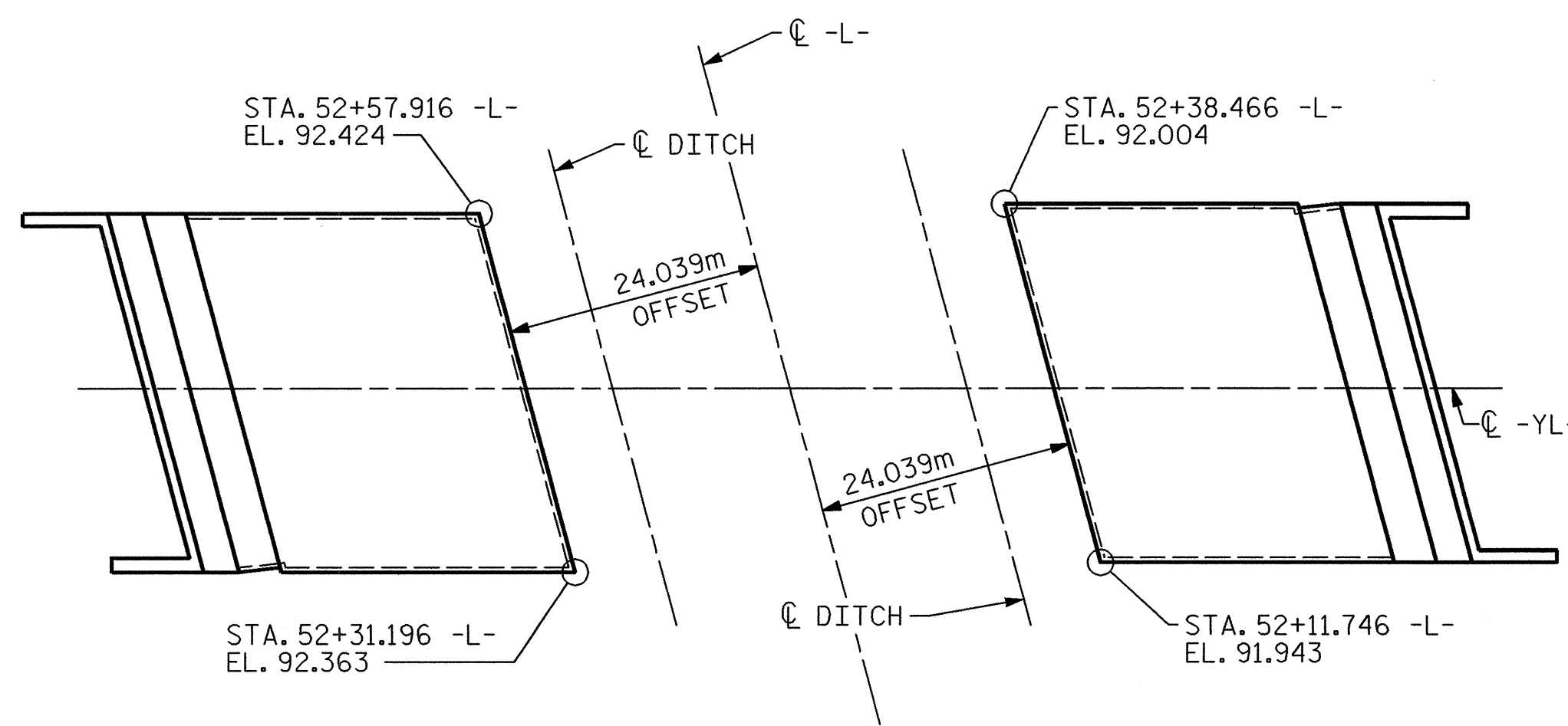
BRIDGE @ STA. 18+60.011 -Y2-	100 mm SLOPE PROTECTION	* WELDED WIRE FABRIC 1520mm WIDE
	SQUARE METERS	APPROX. METERS
END BENT 1	330	217
END BENT 2	305	201

\* QUANTITY SHOWN IS BASED ON 1520mm POURS.



SECTION A-A

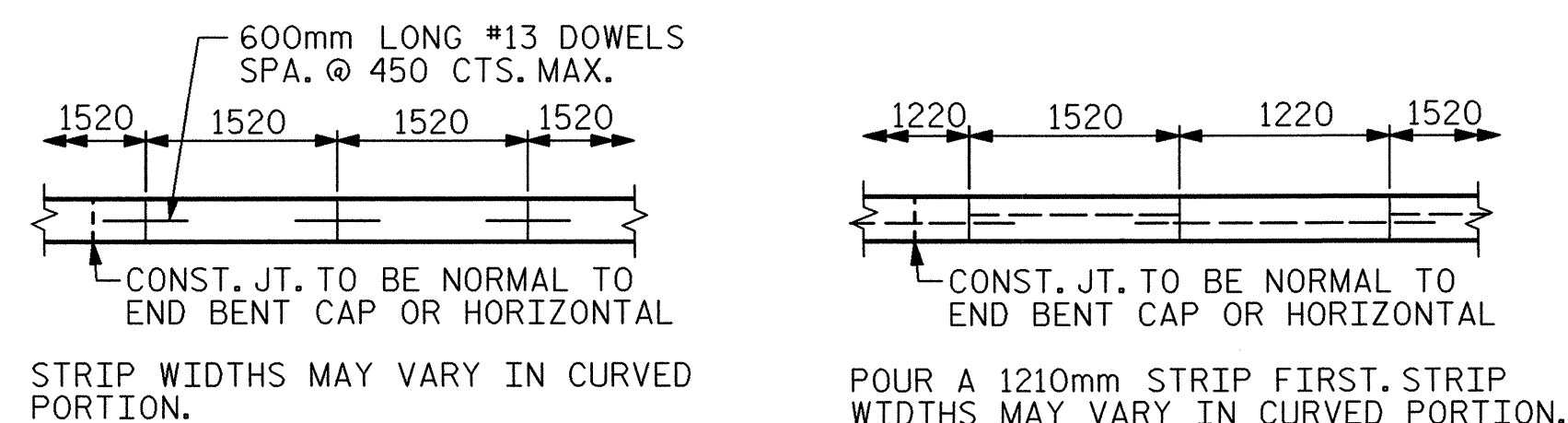
SECTION B-B



**PLAN**  
(END BENT NO. 1)

**PLAN**  
(END BENT NO. 2)

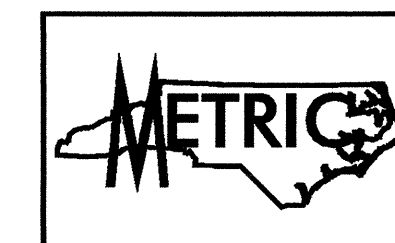
**TOE OF SLOPE PROTECTION - ELEVATIONS AND OFFSETS**



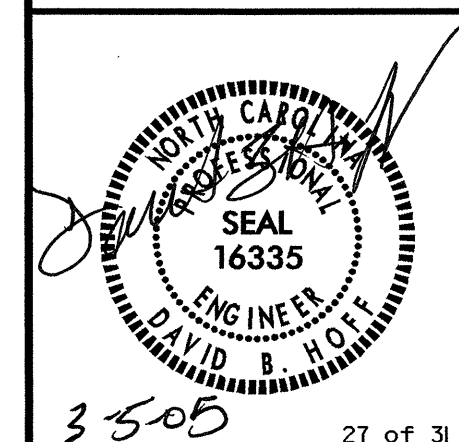
**POURING DETAIL**

**OPTIONAL POURING DETAIL**

PROJECT NO. R-2552AB  
JOHNSTON COUNTY  
STATION: 52+34.693 -L- =  
18+60.011 -Y2-



TRANSYSTEMS CORPORATION  
75 Beattie Place, Suite 400  
Greenville, SC 29601 (864) 234-0866



STATE OF NORTH CAROLINA  
DEPARTMENT OF TRANSPORTATION  
RALEIGH

**STANDARD  
SLOPE PROTECTION  
DETAILS**

REVISIONS						SHEET NO.
NO.	BY:	DATE:	NO.	BY:	DATE:	TOTAL SHEETS
1			3			5-425
2			4			429

3505 27 of 31

ASSEMBLED BY : M.T. BELISLE	DATE : 12/02
CHECKED BY : D.B. HOFF	DATE : 4/03
DRAWN BY : ELR 5/92	REV. 8/16/99 RH/RDR
CHECKED BY : GRP 6/92	REV. 10/17/00 RW/LES
	REV. 7/10/01 LES/RDR