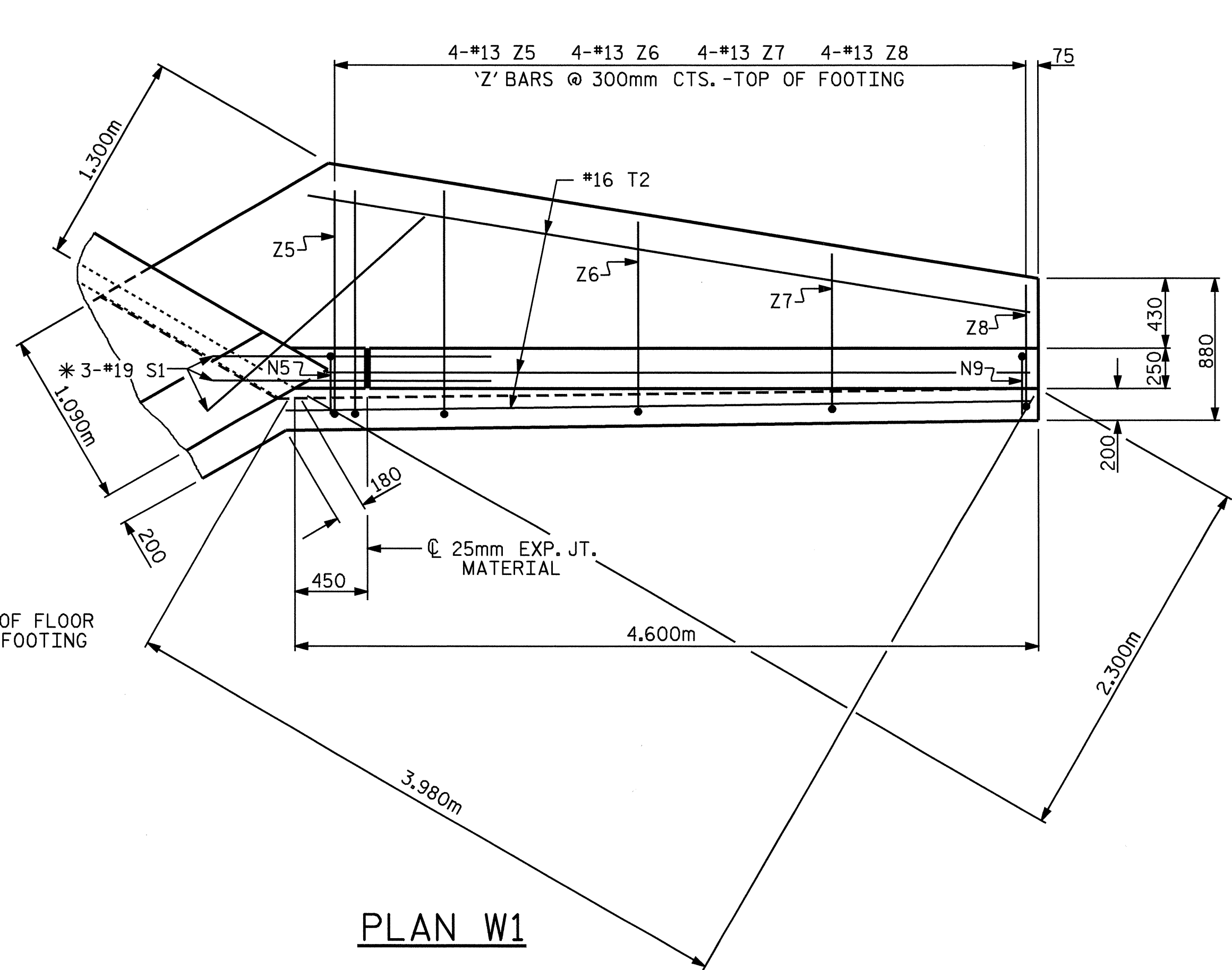
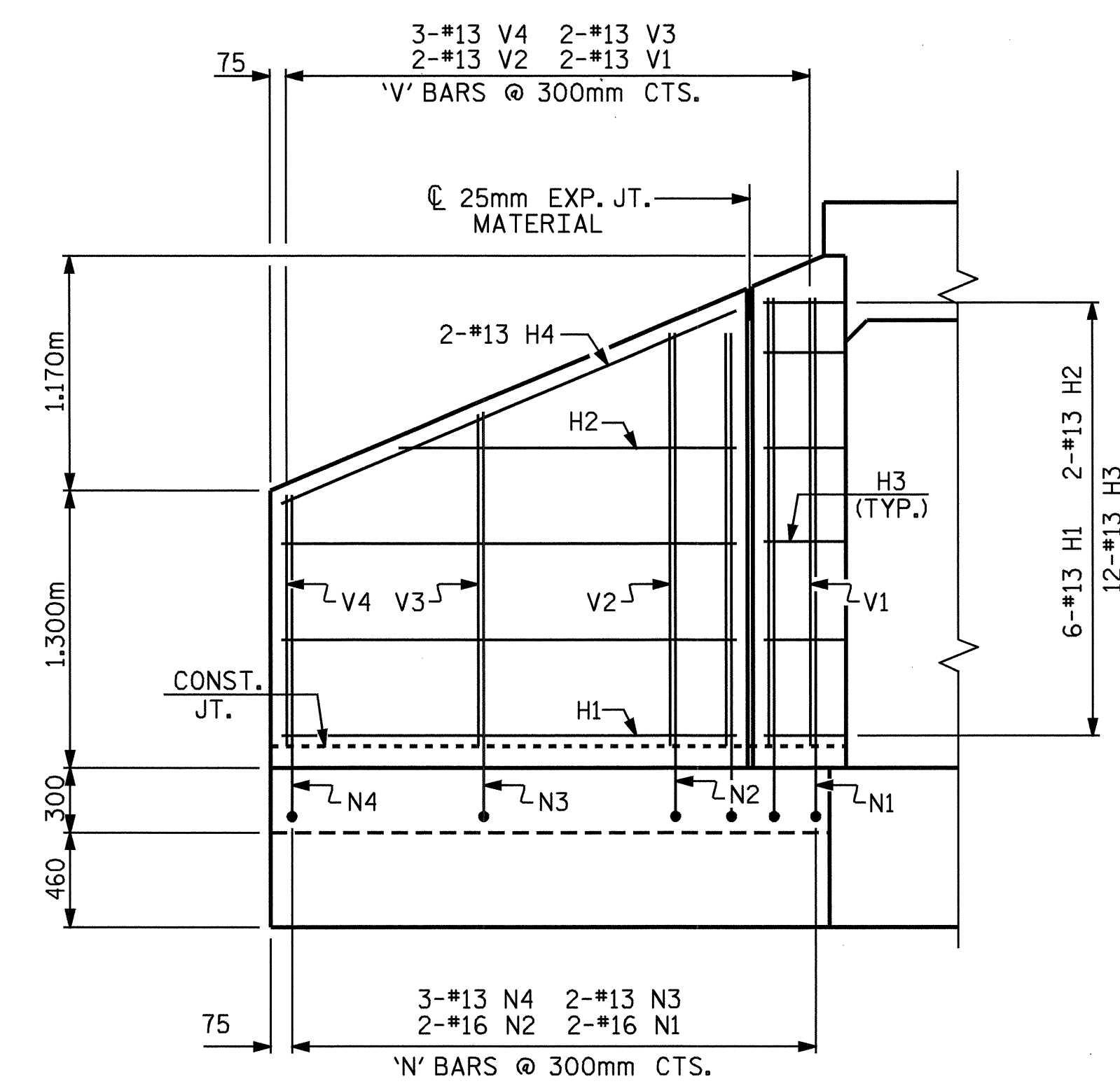


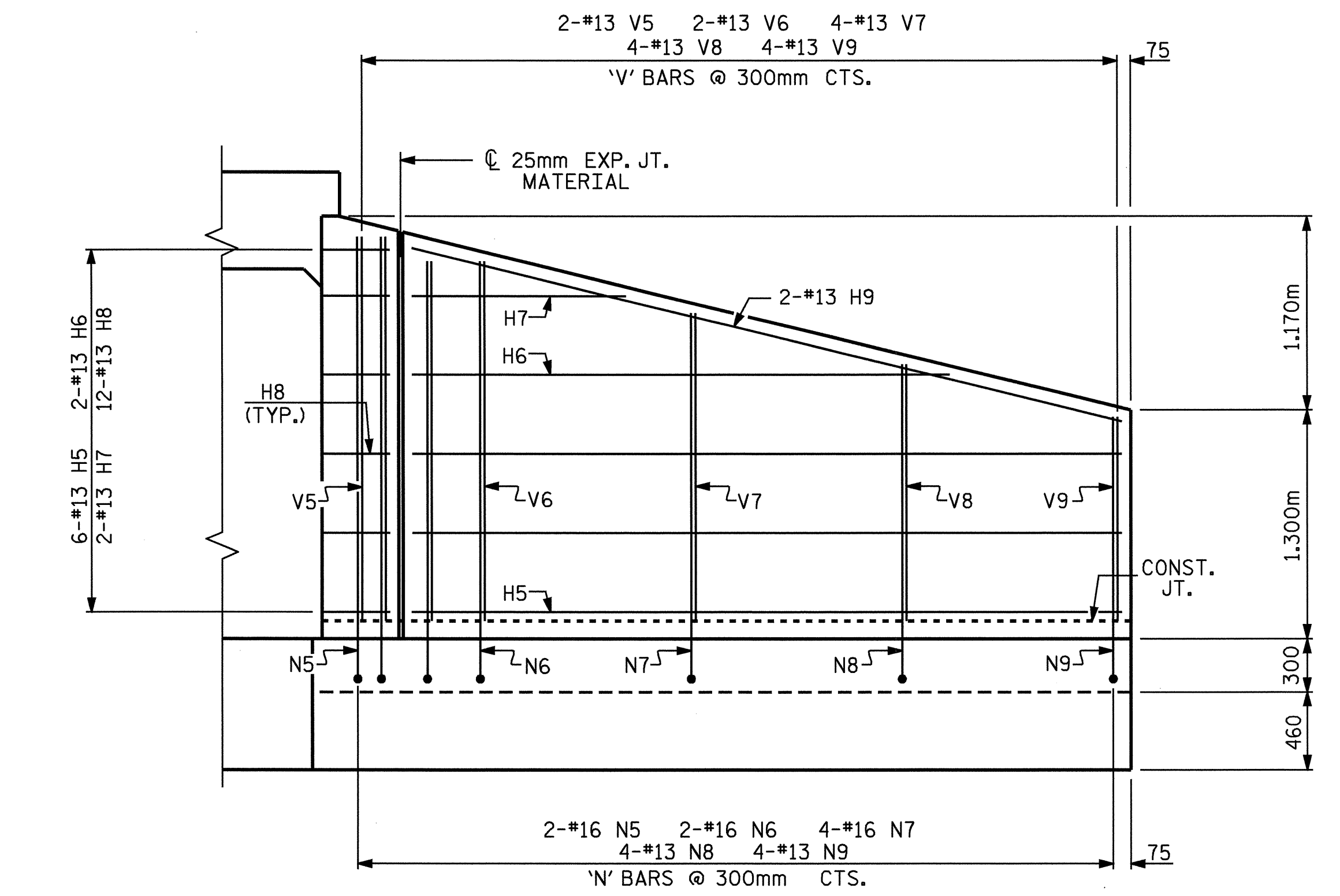
PLAN W2



PLAN W1



ELEVATION W2



ELEVATION W1

BAR TYPES

ALL BAR DIMENSIONS ARE OUT TO OUT.

Z1	1430	150
Z2	1290	150
Z3	1050	150
Z4	790	150
Z5	1370	150
Z6	1190	150
Z7	990	150
Z8	790	150

BILL OF MATERIAL

BAR NO.	SIZE	TYPE	LENGTH	WEIGHT	
H1	12	13	STR	2140	26
H2	4	13	STR	1580	6
H3	24	13	1	980	23
H4	4	13	STR	2300	9
H5	12	13	STR	4040	48
H6	4	13	STR	3160	13
H7	4	13	STR	1340	5
H8	24	13	2	980	23
H9	4	13	STR	4140	16
N1	4	16	3	2680	17
N2	4	16	3	2440	15
N3	4	13	3	2180	9
N4	6	13	3	1800	11
N5	4	16	3	2820	18
N6	4	16	3	2680	17
N7	8	16	3	2400	30
N8	8	13	3	2100	17
N9	8	13	3	1800	14
S1	12	19	STR	1800	48
T1	6	16	STR	2700	25
T2	6	16	STR	4600	43
V1	4	13	STR	2060	8
V2	4	13	STR	1820	7
V3	4	13	STR	1560	6
V4	6	13	STR	1180	7
V5	4	13	STR	2200	9
V6	4	13	STR	2060	8
V7	8	13	STR	1780	14
V8	8	13	STR	1480	12
V9	8	13	STR	1180	9
Z1	4	13	4	1580	6
Z2	4	13	4	1440	6
Z3	6	13	4	1200	7
Z4	6	13	4	940	6
Z5	8	13	4	1520	12
Z6	8	13	4	1340	11
Z7	8	13	4	1140	9
Z8	8	13	4	940	7

REINFORCING STEEL FOR 4 WINGS 577 kg

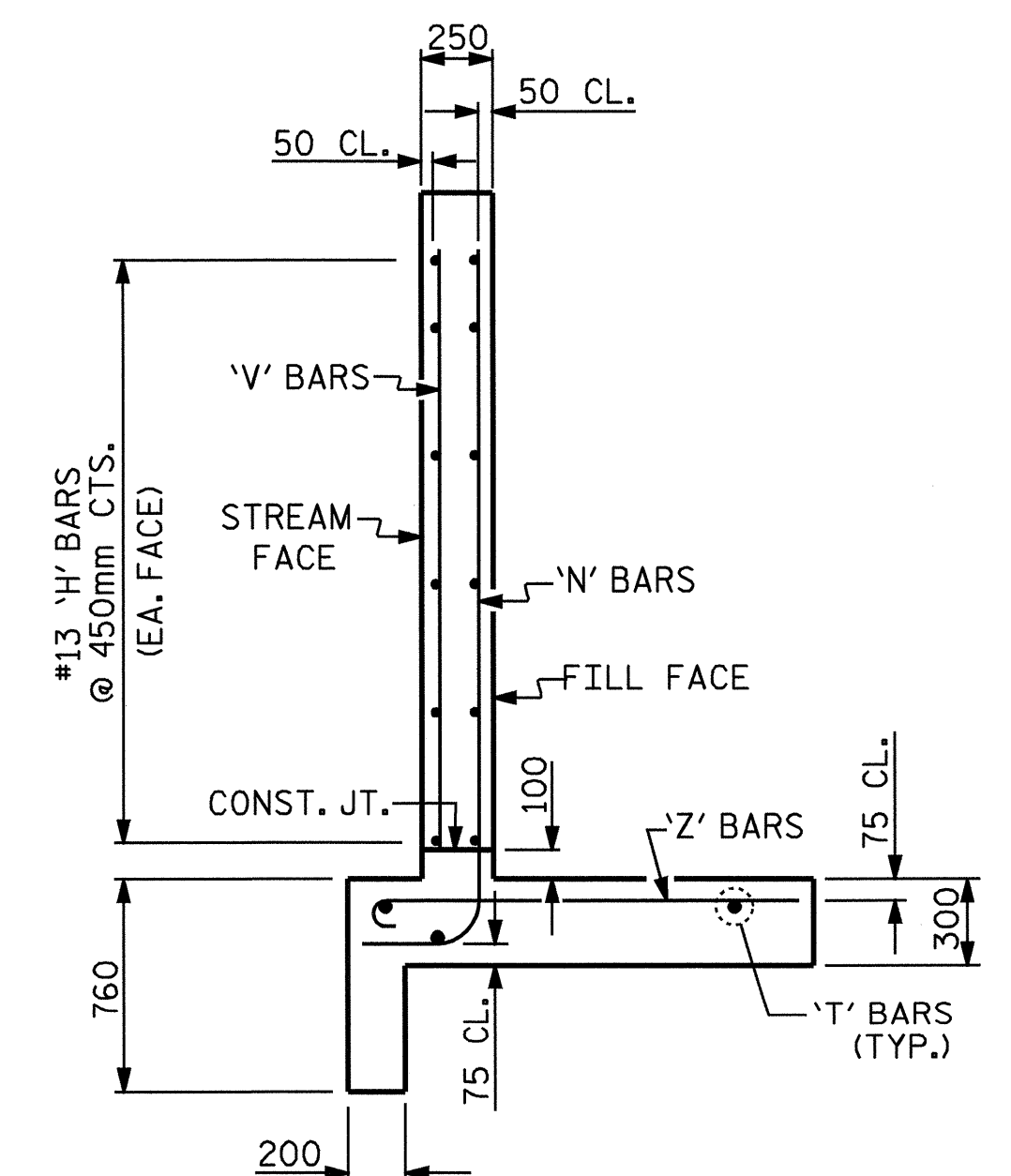
CLASS A CONCRETE

4 WINGS 14.0 m³

2 HEADWALLS 1.5 m³

2 END CURTAIN WALLS 1.1 m³

TOTAL 16.6 m³



TYPICAL WING SECTION

PROJECT NO. R-2552AB
JOHNSTON COUNTY
 STATION: 37+11.500 -L-

SHEET 4 OF 4

STATE OF NORTH CAROLINA
 DEPARTMENT OF TRANSPORTATION
 RALEIGH
STANDARD WINGS FOR CONCRETE BOX CULVERT
 H = 2.1m SLOPE = 2:1
 65° SKEW



ASSEMBLED BY : CR YARBROUGH DATE : 03/05
 CHECKED BY : D. HODGE DATE : 03/05

DRAWN BY : FPP 06/97
 CHECKED BY : VAP 08/97

FOR WING ORIENTATION, SEE BARREL STANDARD SHEET.

REVISIONS				SHEET NO.	
NO.	BY:	DATE:	NO.	BY:	DATE:
1			3		
2			4		

C-4
 TOTAL SHEETS 8