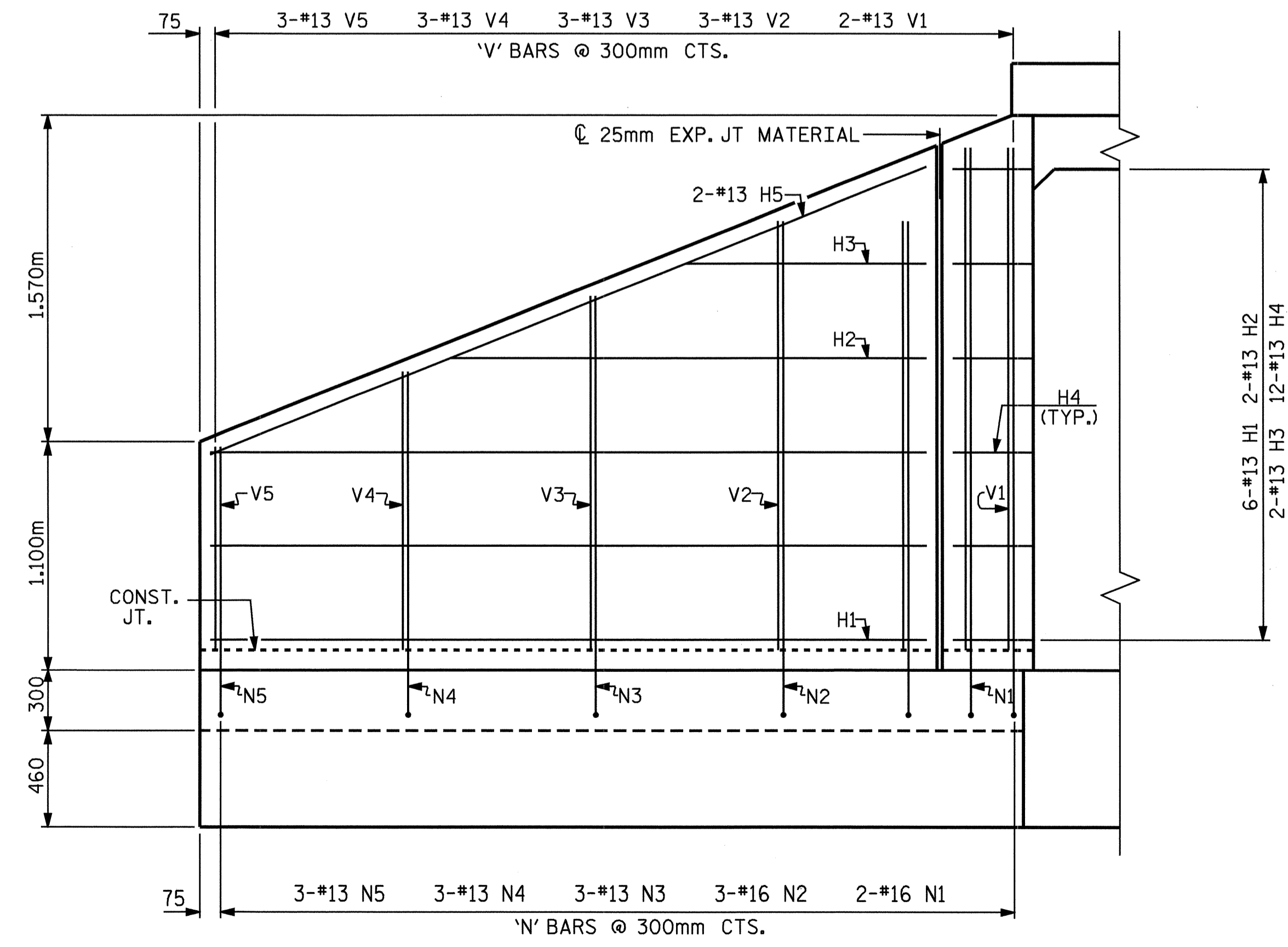
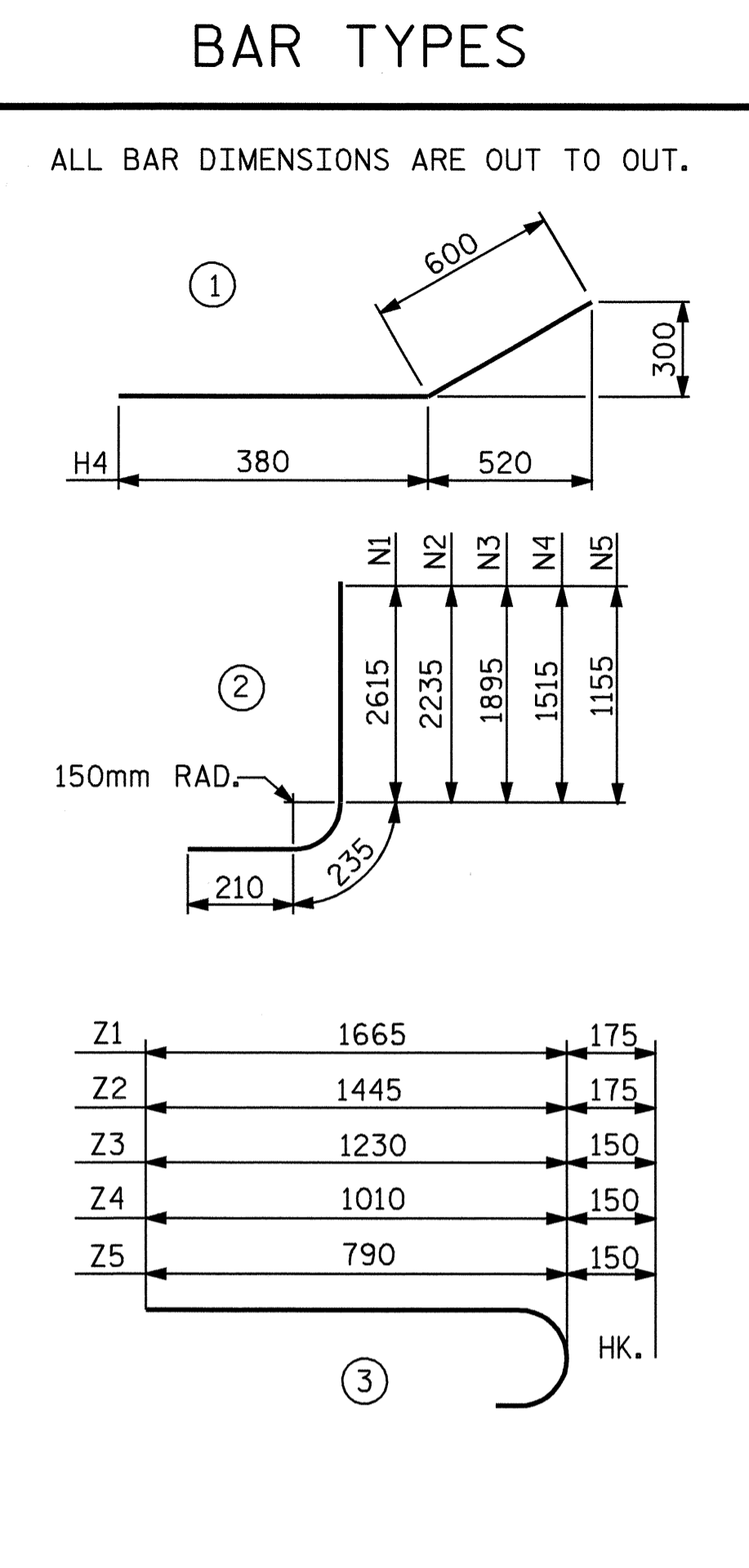


PLAN



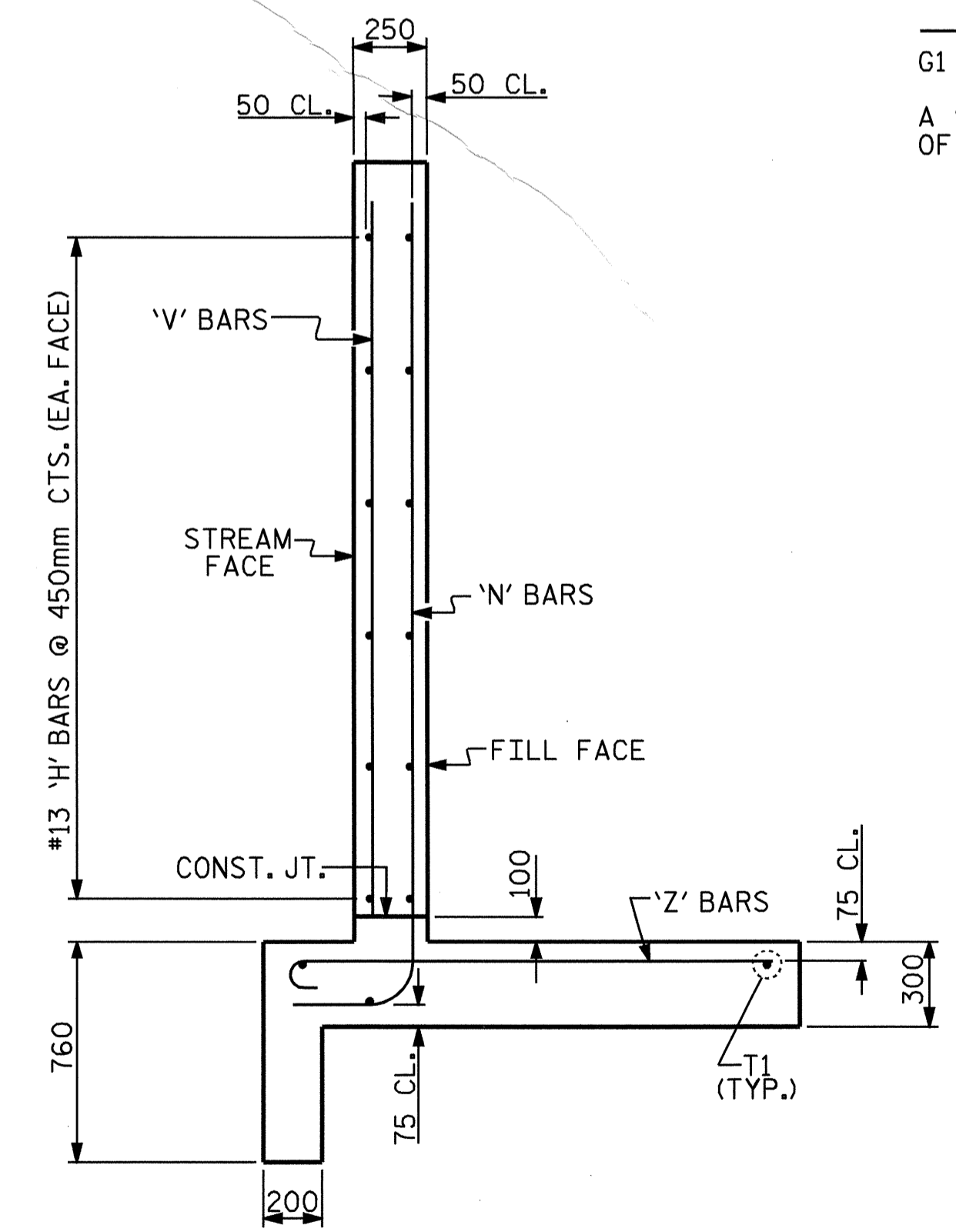
ELEVATION



BILL OF MATERIAL					
BAR NO.	SIZE	TYPE	LENGTH	WEIGHT	
H1	24	13	STR	3440	82
H2	8	13	STR	2380	19
H3	8	13	STR	1280	10
H4	48	13	1	980	47
H5	8	13	STR	3700	29
N1	8	16	2	3060	38
N2	12	16	2	2680	50
N3	12	13	2	2340	28
N4	12	13	2	1960	23
N5	12	13	2	1600	19
S1	12	19	STR	1800	48
T1	12	16	STR	4000	74
V1	8	13	STR	2440	19
V2	12	13	STR	2080	25
V3	12	13	STR	1720	21
V4	12	13	STR	1340	16
V5	12	13	STR	980	12
Z1	8	16	3	1840	23
Z2	12	16	3	1620	30
Z3	12	13	3	1380	16
Z4	12	13	3	1160	14
Z5	12	13	3	940	11
REINFORCING STEEL FOR 4 WINGS				654 kg	
CLASS A CONCRETE					
4 WINGS			16.0	m ³	
2 HEADWALLS			1.0	m ³	
2 END CURTAIN WALLS			1.2	m ³	
TOTAL			18.2	m ³	

NOTES

- G1 BARS IN HEADWALL ARE INCLUDED WITH BARREL REINFORCING STEEL.
- A 900mm STRIP OF FILTER FABRIC SHALL BE ATTACHED TO THE FILL FACE OF THE WING COVERING THE ENTIRE LENGTH OF THE EXPANSION JOINT.



TYPICAL WING SECTION

PROJECT NO. R-2552AB
JOHNSTON COUNTY
 STATION: 57+17.000 -L-

SHEET 4 OF 4



STATE OF NORTH CAROLINA
 DEPARTMENT OF TRANSPORTATION
 RALEIGH
 STANDARD WINGS
 FOR
 CONCRETE BOX CULVERT
 H = 2.400m SLOPE = 2 : 1

ASSEMBLED BY : A.M.KEETER DATE : 2/17/05
 CHECKED BY : M.G.CHEEK DATE : 2/21/05
 DRAWN BY : FPP 06/97
 CHECKED BY : VAP 08/97

REVISIONS				SHEET NO.
NO.	BY:	DATE:	NO.	DATE:
1			3	
2			4	

TOTAL SHEETS 8