

NOTES:

PROVIDE 32 mm BEAM BOLSTERS UPPER @ 1.200 m CTS. ATOP THE METAL STAY-IN-PLACE FORMS TO SUPPORT THE BOTTOM MAT OF "A" BARS. WHEN USING REMOVABLE FORMS, PROVIDE CONTINUOUS HIGH CHAIRS FOR METAL DECK (C.H.C.M) @ 1.200 m CTS. WITH A HEIGHT TO SUPPORT THE BOTTOM MAT OF "A" BARS A CLEAR DISTANCE OF 65 mm ABOVE THE TOP OF THE REMOVABLE FORM.

METAL STAY-IN-PLACE FORMS SHALL NOT BE WELDED TO BEAM OR GIRDER FLANGES IN THE ZONES REQUIRING CHARPY V-NOTCH TEST. SEE STRUCTURAL STEEL DETAILS SHEETS.

PREVIOUSLY CAST CONCRETE IN A CONTINUOUS UNIT SHALL HAVE ATTAINED A MINIMUM COMPRESSIVE STRENGTH OF 20.7 MPa BEFORE ADDITIONAL CONCRETE IS CAST IN THE UNIT.

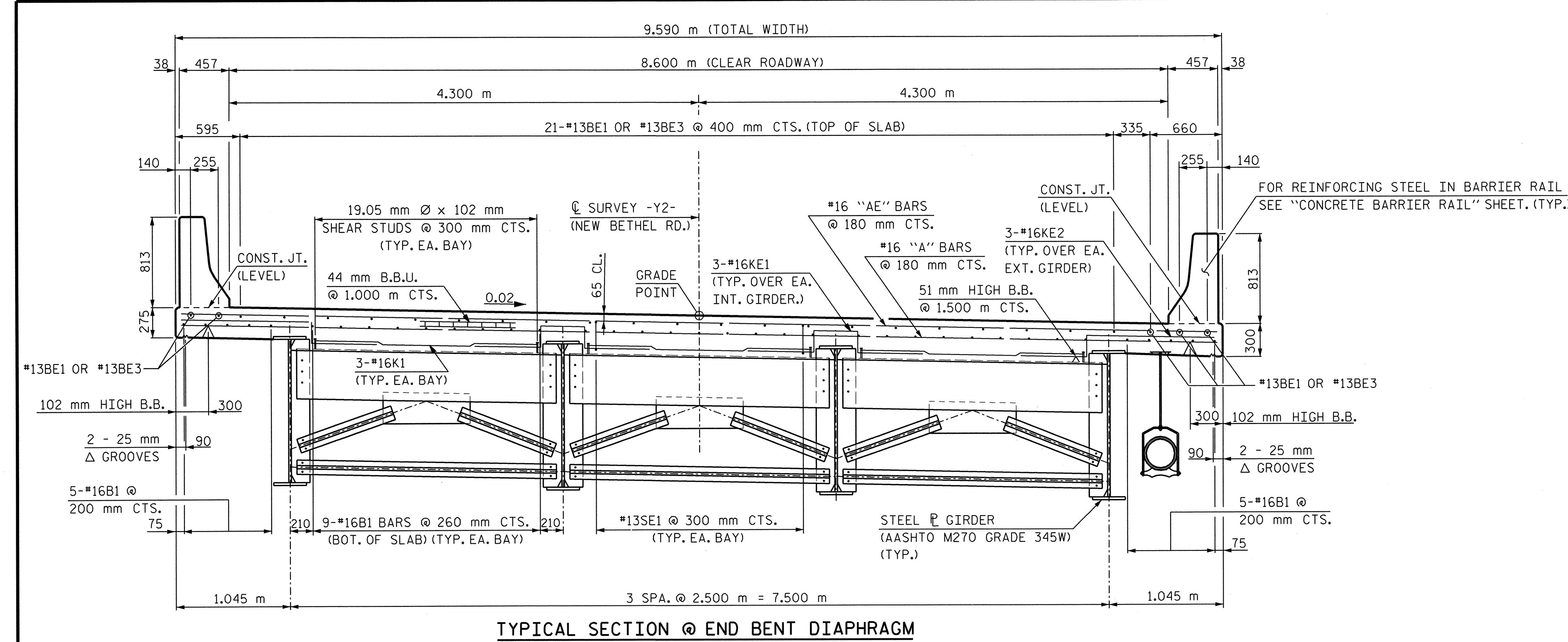
STRUCTURAL STEEL ERECTION IN A CONTINUOUS UNIT SHALL BE COMPLETE BEFORE FALSEWORK OR FORMS ARE PLACED ON THE UNIT.

THE CONTRACTOR MAY, WHEN NECESSARY, PROPOSE A SCHEME FOR AVOIDING INTERFERENCE BETWEEN METAL STAY-IN-PLACE FORM SUPPORTS OR FORMS AND BEAM/GIRDER STIFFENER OR CONNECTOR PLATES. THE PROPOSAL SHALL BE INDICATED, AS APPROPRIATE, ON EITHER THE STEEL WORKING DRAWINGS OR THE METAL STAY-IN-PLACE FORM WORKING DRAWINGS.

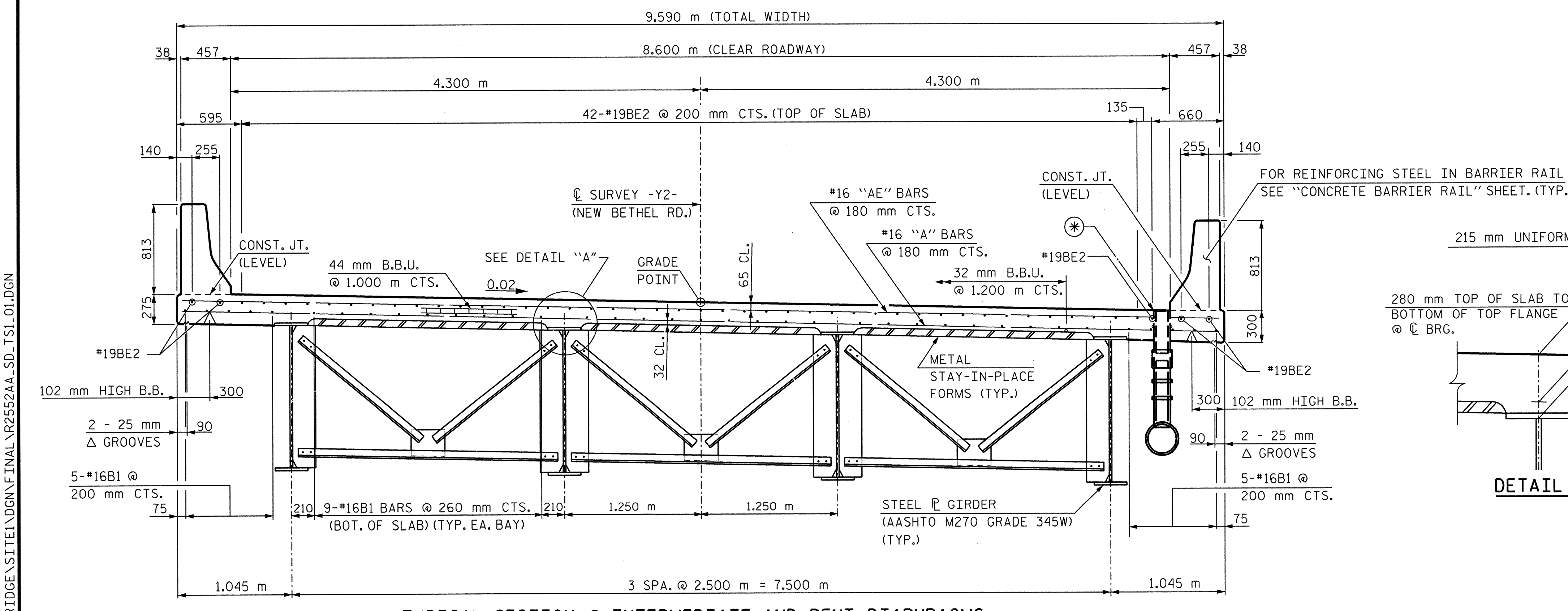
THE CONTRACTOR SHALL ADJUST THE GIRDER BUILDUPS AS NECESSARY TO INCORPORATE A MAXIMUM PERMISSIBLE VARIATION IN POT BEARING DEPTH OF 13mm, SEE SPECIAL PROVISIONS FOR POT BEARINGS.

FOR STRUCTURE DRAINAGE SYSTEM, SEE SPECIAL PROVISIONS.

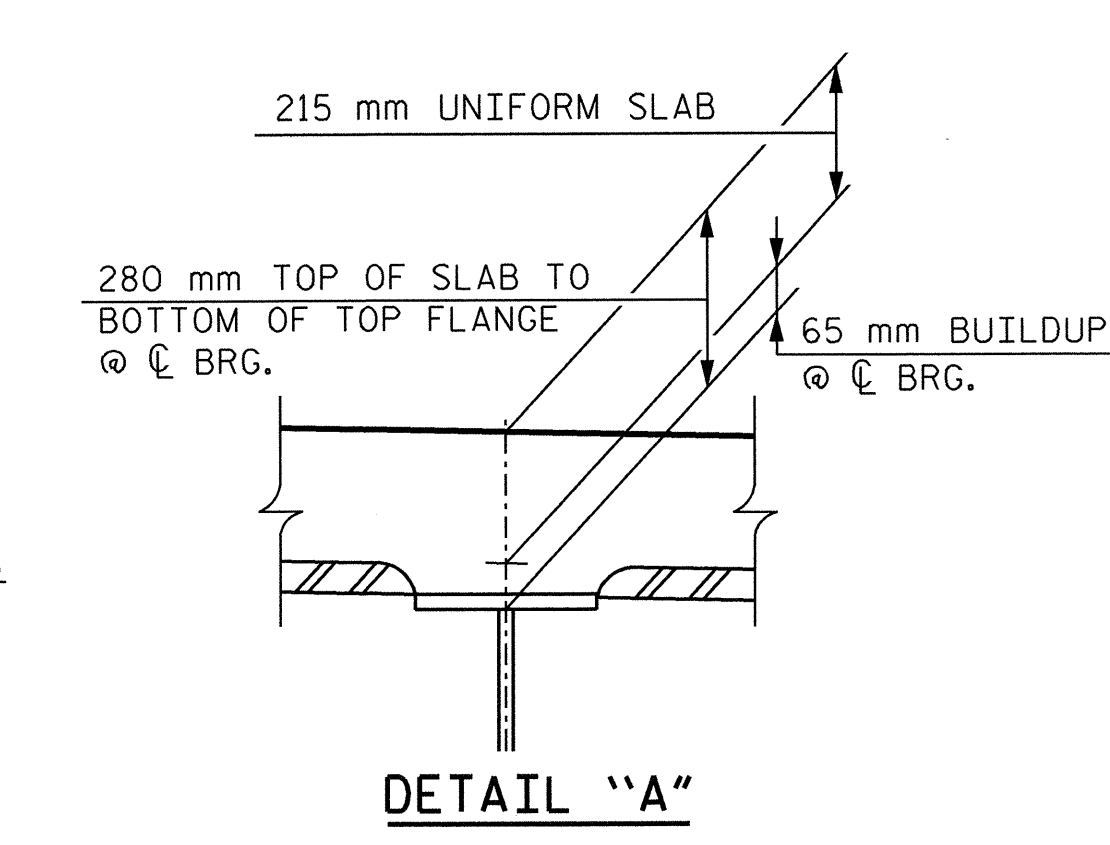
THE CONTRACTOR SHALL SUBMIT A PLAN FOR THE DRAINAGE SYSTEM, INCLUDING, BUT NOT LIMITED TO, ATTACHMENTS TO THE BRIDGE, PIPE ALIGNMENT AND PIPE LENGTHS, AND ALL NECESSARY FITTINGS, ELBOWS, WYES, ADAPTERS, GUIDES AND JOINTS.



TYPICAL SECTION @ END BENT DIAPHRAGM



TYPICAL SECTION @ INTERMEDIATE AND BENT DIAPHRAGMS



PROJECT NO. R-2552AA
 WAKE / JOHNSTON COUNTY
 STATION: 19+25.877 -11Y1- P.O.T.

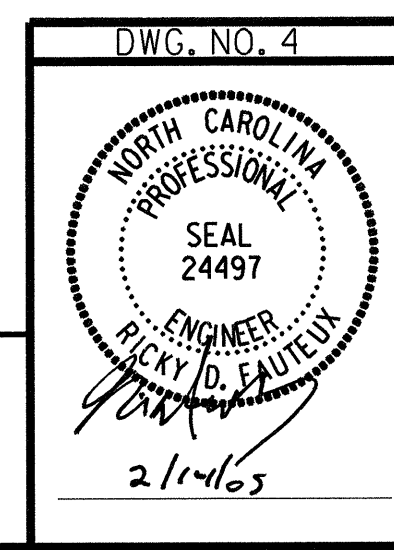
SHEET 1 OF 2

STATE OF NORTH CAROLINA
 DEPARTMENT OF TRANSPORTATION
 RALEIGH

**SUPERSTRUCTURE
 TYPICAL SECTION**

JANUARY 2005

| NO. | | BY: | | DATE: | | SHEET NO. |
|-----|---|-----|---|-------|---|-----------|
| 1 | 2 | 3 | 4 | 5 | 6 | |
| 1 | | | | 3 | | 5-4 |
| 2 | | | | 4 | | 429 |



RUMMEL, KLEPPER & KAHL, LLP
 consulting engineers
 5800 FARINGTON PLACE - SUITE 105
 RALEIGH, NORTH CAROLINA 27609-3960

* 152 mm Ø P.V.C. DECK DRAIN
 (FOR DETAILS, SEE "CLOSED DRAINAGE SYSTEM DETAILS" SHEET.)
 (FOR LOCATION AND SPACING, SEE CLOSED DRAINAGE SYSTEM LAYOUT" SHEET.)

DRAWN BY: B. PARRISH DATE: 01/05
 CHECKED BY: R. D. FAUTEUX DATE: 01/05

G:\COMMONS\304046\BRIDGE\SITE\1\DWG\FINAL\R2552AA-SD-TS1-01.DGN