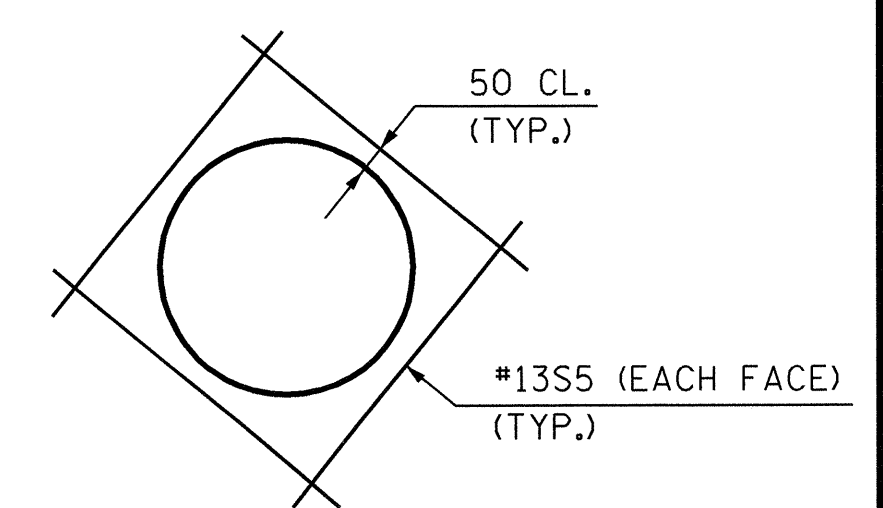


NOTES:
 FOR TEMPORARY DRAINAGE, SEE "END BENT 1 DETAILS" SHEET, SHEET 2 OF 3.
 FOR NOTES AND SECTION A-A, SEE "END BENT 2 DETAILS" SHEET, SHEET 2 OF 4.
 PVC PIPE SLEEVE MUST BE CAST INTO BACKWALL TO ALLOW CLOSED DRAINAGE SYSTEM TO PASS THROUGH TO JUNCTION BOX.
 REINFORCING STEEL MAY BE SHIFTED AS NECESSARY TO CLEAR THE PIPE SLEEVE.

ELEVATION TABLE

A	95.056
B	93.251
C	90.581
*D	94.656
*E	94.546
*F	94.437
G	94.837
H	93.291
I	93.195
J	93.235
K	93.138
L	93.178
M	93.081
N	93.121
P	89.781

* AT FILL FACE



NOTE: PLACE 4-#13S5 (EACH FACE) AROUND PIPE SLEEVE

PIPE SLEEVE DETAIL

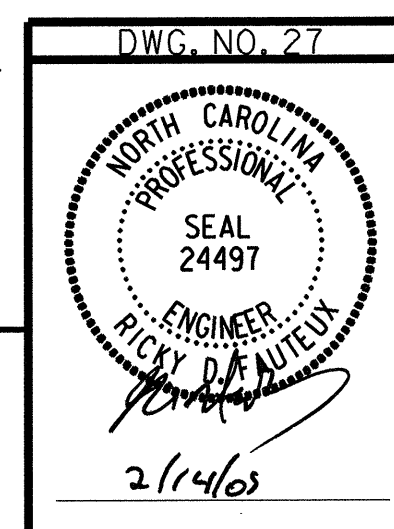
PROJECT NO. R-2552AA
 WAKE / JOHNSTON COUNTY
 STATION: 19+25.877 -I1Y1- P.O.T.

SHEET 1 OF 4

STATE OF NORTH CAROLINA
 DEPARTMENT OF TRANSPORTATION
 RALEIGH

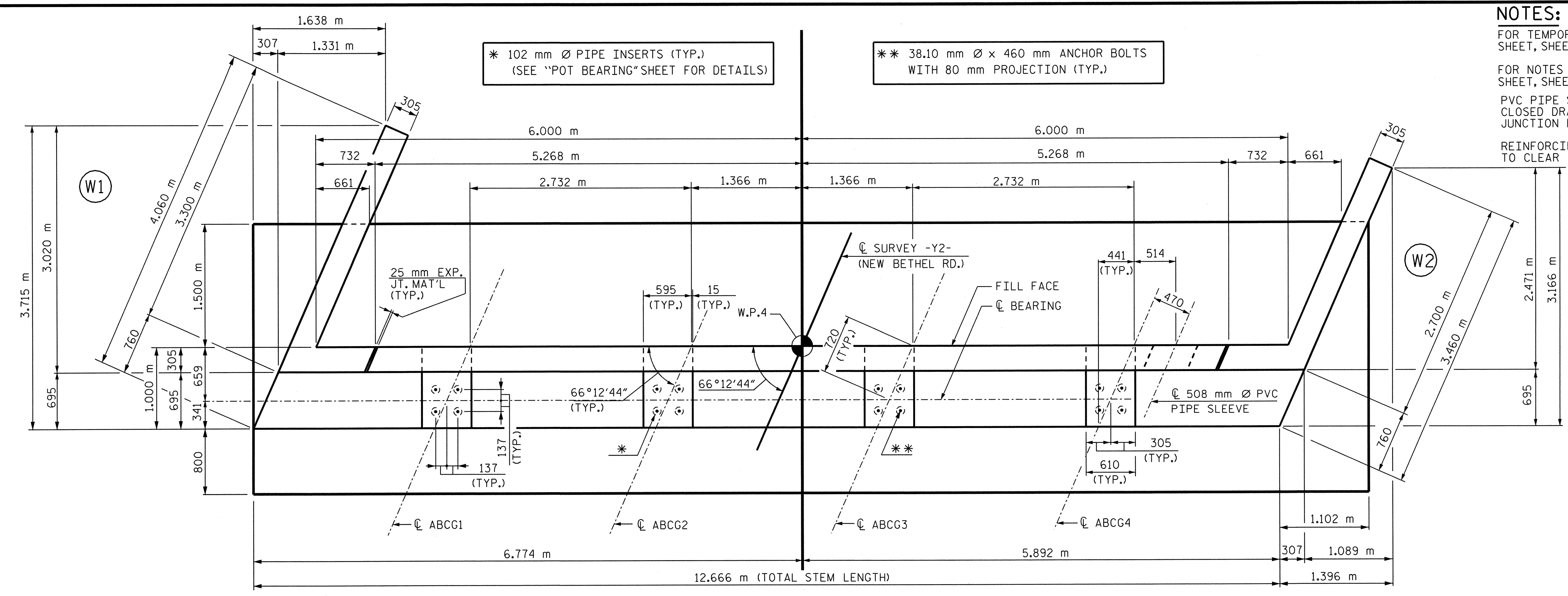
**SUBSTRUCTURE
 END BENT 2**

JANUARY 2005



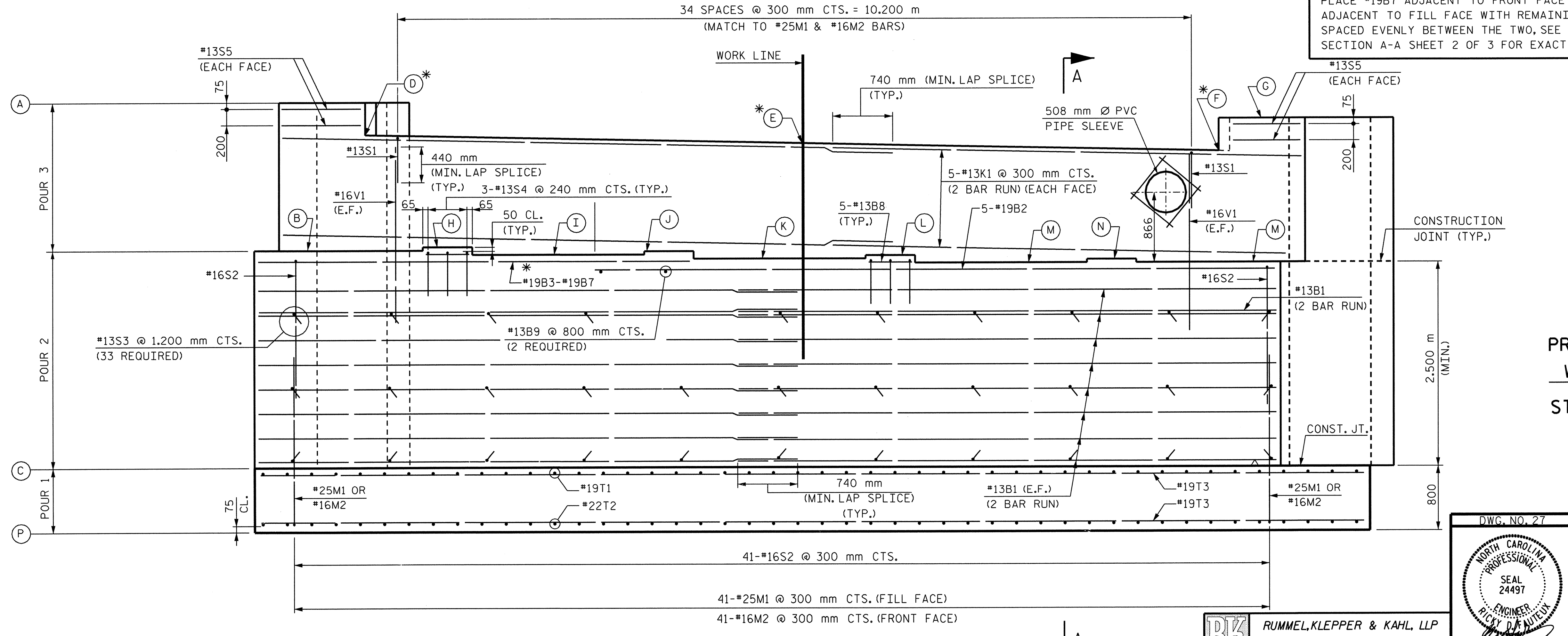
RUMMEL, KLEPPER & KAHL, LLP
 consulting engineers
 5800 FARRINGTON PLACE - SUITE 105
 RALEIGH, NORTH CAROLINA 27609-3960

NO.		BY:	DATE:	NO.		BY:	DATE:	SHEET NO.	
1				3				3-27	TOTAL SHEETS
2				4				429	



PLAN

* PLACE #19B7 ADJACENT TO FRONT FACE AND #19B3 ADJACENT TO FILL FACE WITH REMAINING BARS SPACED EVENLY BETWEEN THE TWO, SEE SECTION A-A SHEET 2 OF 3 FOR EXACT SPACING.



ELEVATION

DRAWN BY: B. PARRISH DATE: 01/05
 CHECKED BY: R. D. FAUTEUX DATE: 01/05

G:\COMNOS\304046\BRIDGE\STEIN\DCN\FINAL\ R2552AA_SD_EB21_01.DGN