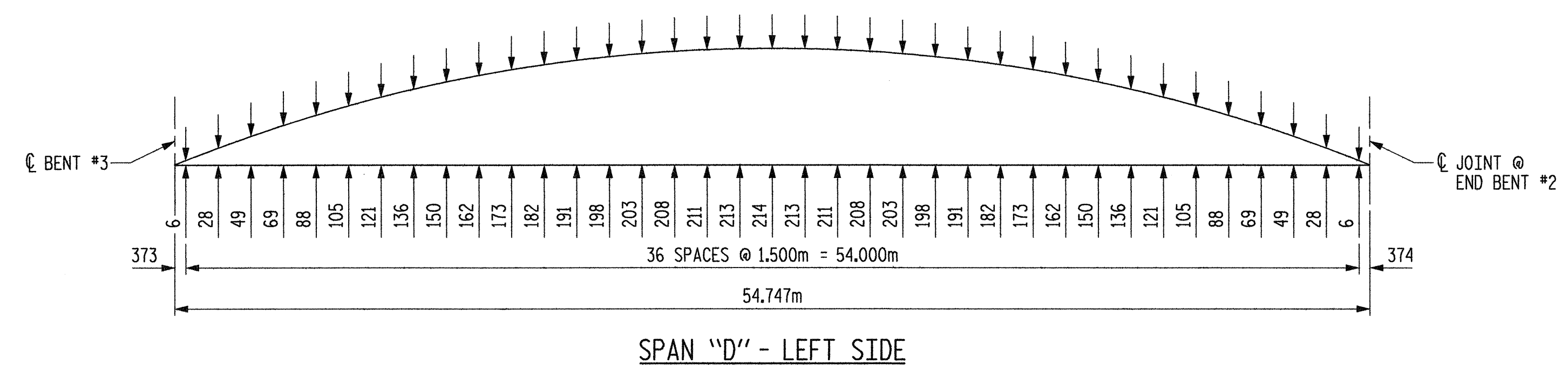
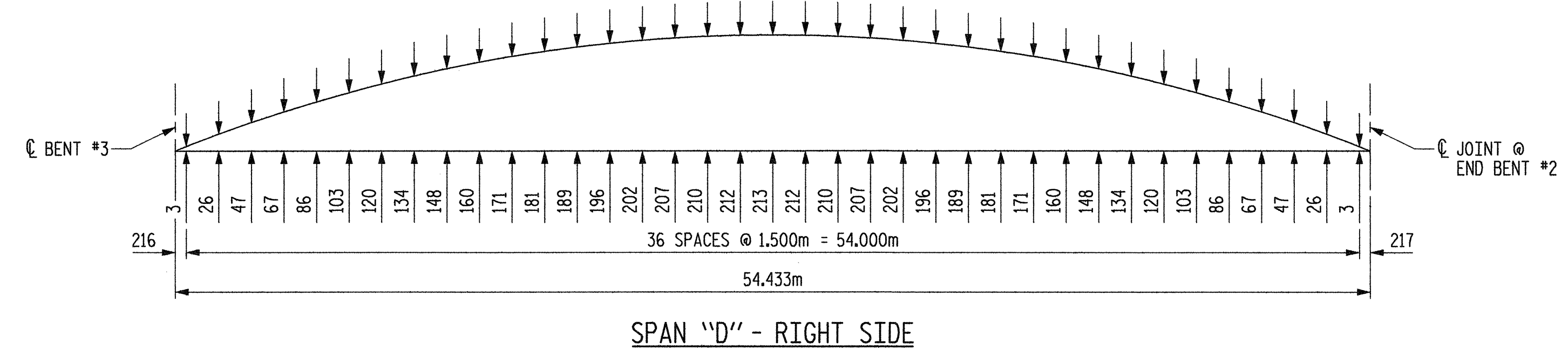


PLAN OF SPAN "D"

▲ ARC LENGTH MEASURED ALONG C SURVEY -LPB-

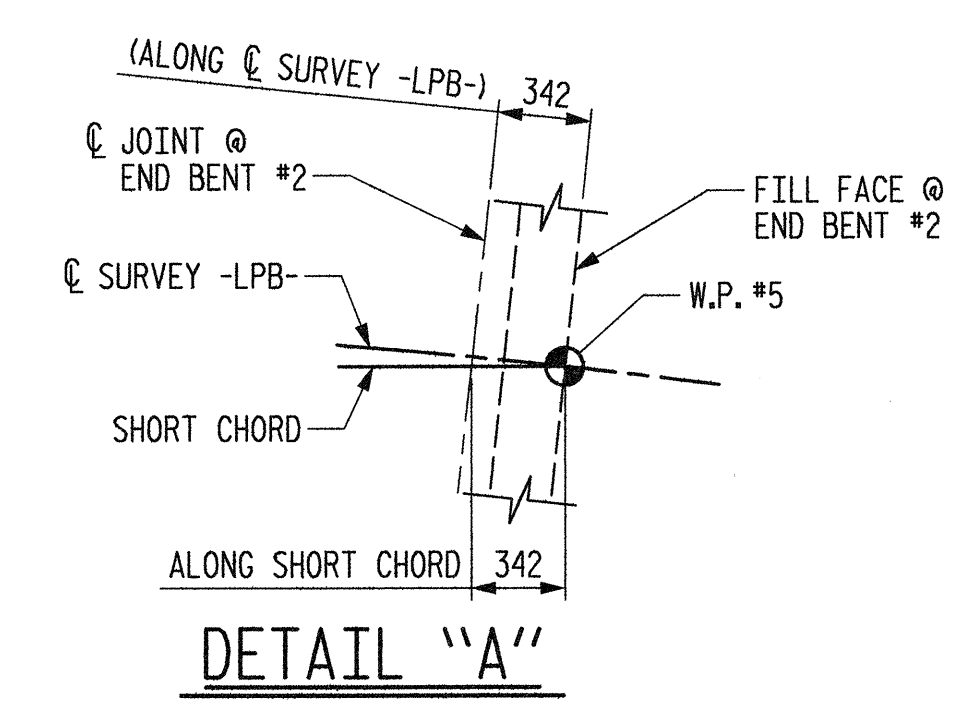


SPAN "D" - LEFT SIDE

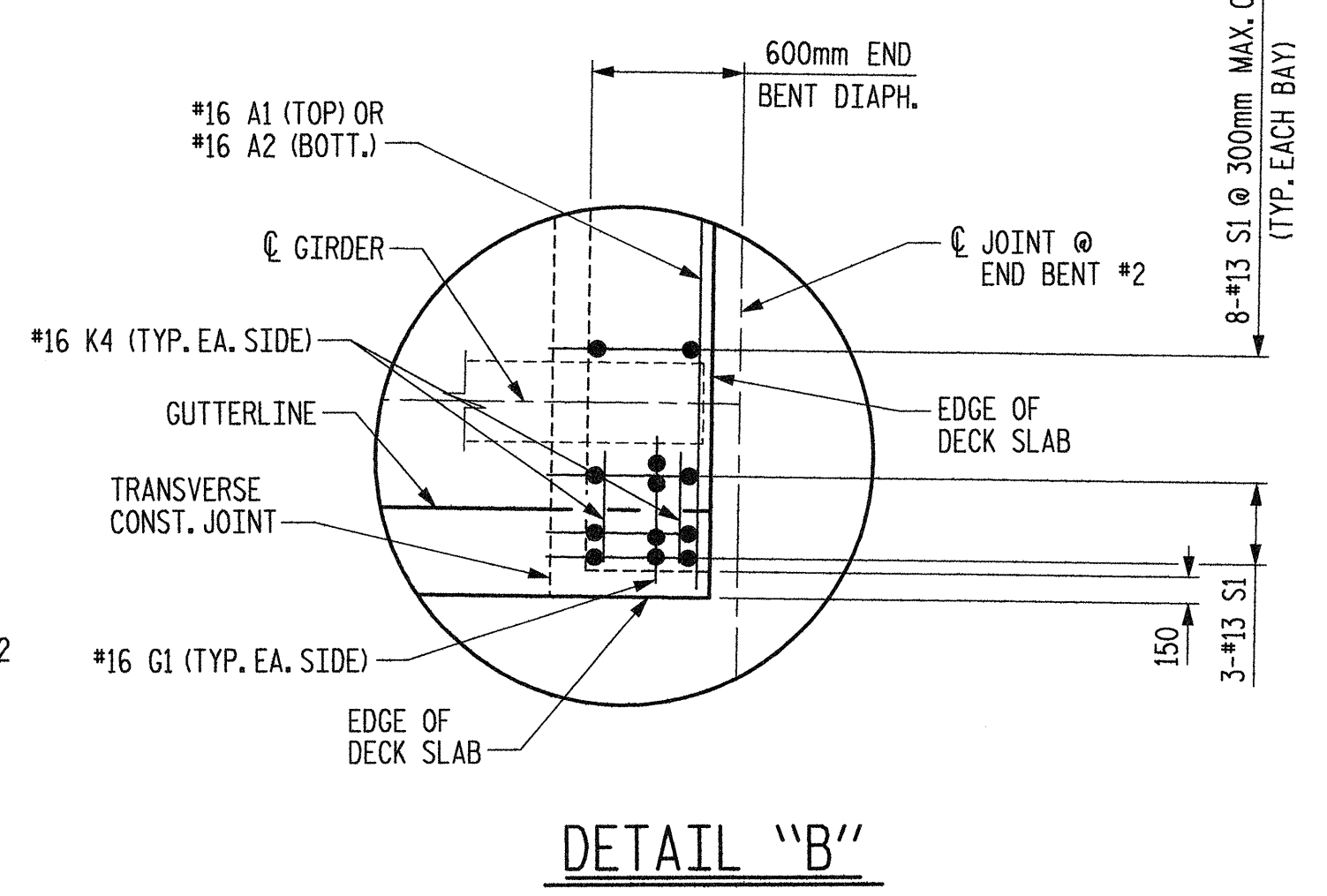


SPAN "D" - RIGHT SIDE

ARC OFFSETS - OUTSIDE EDGE OF DECK



DETAIL "A"



DETAIL "B"

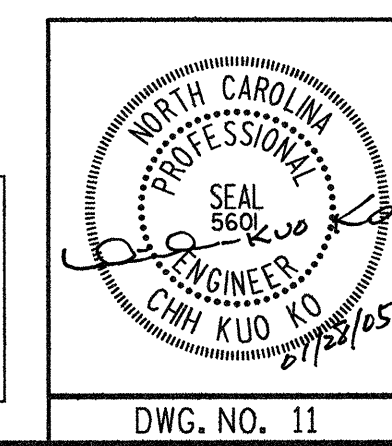
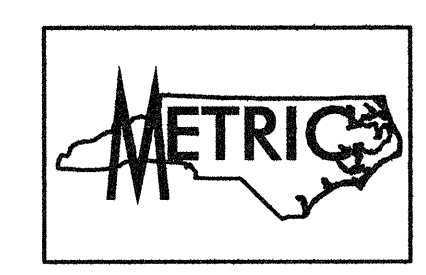
* NORMAL OR RADIAL TO C SURVEY -LPB-
 (#) INDICATES POUR NUMBER AND DIRECTION OF POUR

NOTES

- TRANSVERSE REINFORCING STEEL SHALL BE PLACED NORMAL OR RADIAL TO C SURVEY -LPB-, UNLESS OTHERWISE NOTED.
- FOR REINFORCING STEEL IN BARRIER RAIL NOT SHOWN, SEE "STANDARD CONCRETE BARRIER RAIL" SHEET.
- FOR CONTINUATION OF REINFORCING STEEL, SEE SUPERSTRUCTURE PLAN OF SPAN "A", SUPERSTRUCTURE PLAN OF SPAN "B" AND SUPERSTRUCTURE PLAN OF SPAN "C".
- FOR TRANSVERSE CONSTRUCTION JOINT IN DECK SLAB DETAIL, SEE SUPERSTRUCTURE "TYPICAL SECTION AND DETAILS", SHEET 2 OF 2.
- THE "S" BARS IN THE DECK MAY BE SHIFTED SLIGHTLY TO CLEAR THE MODULAR JOINT SUPPORT BOXES.
- FOR TOP AND BOTTOM "B" BARS NOT SHOWN, SEE SUPERSTRUCTURE "B" BAR LAYOUT SHEET.

PROJECT NO. R-2552AA
 WAKE-JOHNSTON COUNTY
 STATION: 27+51.601 -I1Y1-

SHEET 4 OF 4



STATE OF NORTH CAROLINA
 DEPARTMENT OF TRANSPORTATION
 RALEIGH

**SUPERSTRUCTURE
 PLAN OF SPAN "D"**

REVISIONS						SHEET NO.
NO.	BY:	DATE:	NO.	BY:	DATE:	
1			3			5-47
2			4			TOTAL SHEETS 429

DWG. NO. 11

Plans prepared by:
KO & ASSOCIATES, P.C.
 Consulting Engineers
 101 SCHAUER DR., SUITE #202
 RALEIGH, N.C. 27606
 For Division of Highways

PLOT: 01/28/2005 09:58:17 AM Ko & Associates, P.C.
 FILE NAME: r1\2552aa.dwg, 4.05.dgn

DRAWN BY: B.E. LANNING DATE: JAN. 2005
 CHECKED BY: J.C. KO / A.K. ORR DATE: JAN. 2005