

REINFORCING BAR SCHEDULE

SPANS "A", "B", "C" & "D"					
BAR	NO.	SIZE	TYPE	LENGTH	WEIGHT
* A1	1366	16	STR	9880	20946
A2	1366	16	STR	9880	20946
* B1	644	13	STR	8900	5697
* B2	132	19	STR	9620	2838
* B3	20	19	STR	15600	697
* B4	132	19	STR	8460	2496
* B5	132	19	STR	9080	2679
B6	532	16	STR	17240	14234
* G1	16	16	4	1100	27
* K1	8	16	1	2360	29
* K2	8	16	2	2640	33
K3	12	16	STR	2140	40
K4	8	16	STR	600	7
* S1	60	13	3	960	57
*EPOXY COATED REINFORCING STEEL				kg	35499
REINFORCING STEEL				kg	35227

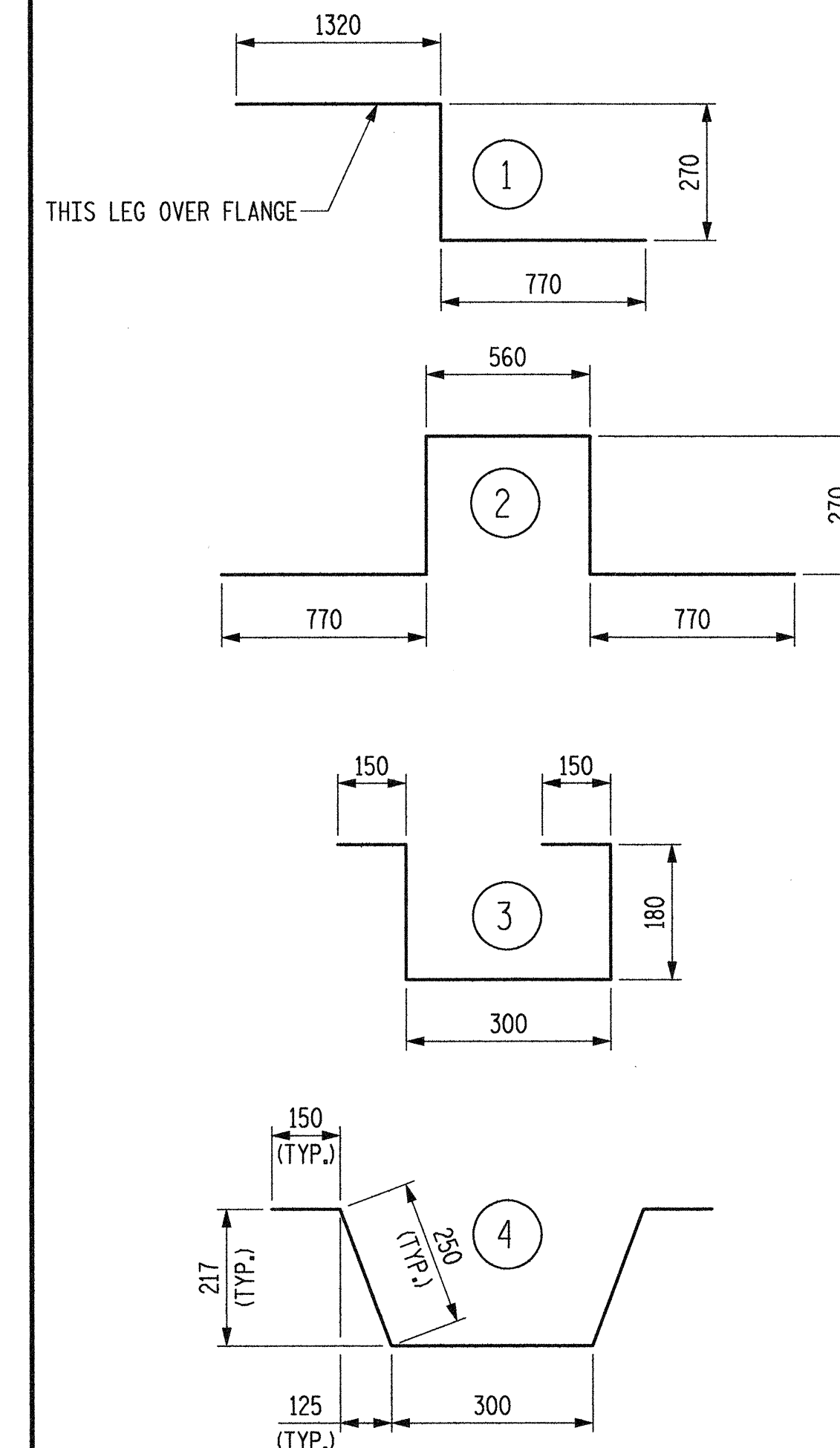
SUPERSTRUCTURE REINFORCING STEEL LENGTHS ARE BASED ON THE FOLLOWING MINIMUM SPLICE LENGTHS

BAR SIZE	SUPERSTRUCTURE EXCEPT APPROACH SLABS, PARAPET, AND BARRIER RAIL		APPROACH SLABS		PARAPET AND BARRIER RAIL
	EPOXY COATED	UNCOATED	EPOXY COATED	UNCOATED	
#13	610	540	610	540	840
#16	770	660	770	660	1050
#19	920	790	1190	790	1330
#22	1580	1060			
#25	2080	1390			

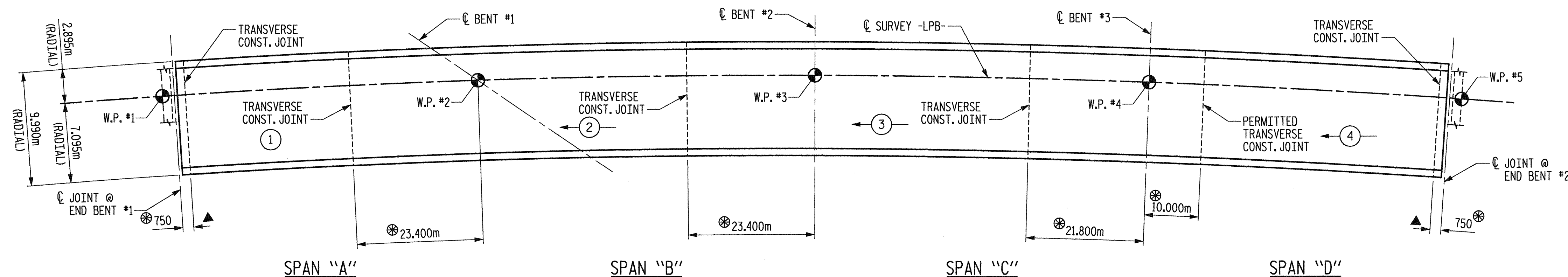
GROOVING BRIDGE FLOORS

APPROACH SLABS	119.8	SQ. METER
BRIDGE DECK	1873.4	SQ. METER
TOTAL	1993.2	SQ. METER

BAR TYPES



ALL BAR DIMENSIONS ARE OUT TO OUT.

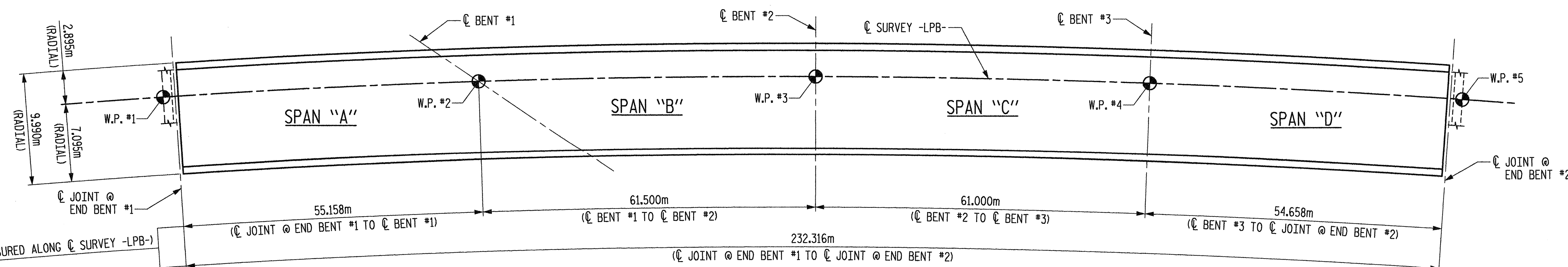


PLAN - POURING SEQUENCE

① INDICATES POUR NUMBER AND DIRECTION OF POUR.

▲ CLOSURE POUR ADJACENT TO MODULAR JOINT ASSEMBLY AT END BENT #1 AND END BENT #2.. CLOSURE POUR (INCLUDING DROPWALL) WILL BE PLACED AFTER ALL SPAN POURS DENOTED IN POURING DIAGRAM ARE COMPLETED.

⊗ DIMENSIONS MEASURED ALONG CL SURVEY -LPB-.



LAYOUT FOR COMPUTING AREA OF REINFORCED CONCRETE DECK SLAB (SQ. METER = 2318.0)

SUPERSTRUCTURE BILL OF MATERIAL

	CLASS AA CONCRETE (CU. METER)	REINFORCING STEEL (kg)	EPOXY COATED REINFORCING STEEL (kg)
SPANS "A", "B", "C" & "D"		35227	35499
POUR #1	85.4 ▲		
POUR #2	163.7		
POUR #3	166.7		
POUR #4	204.4 ▲		
TOTALS **	620.2	35227	35499

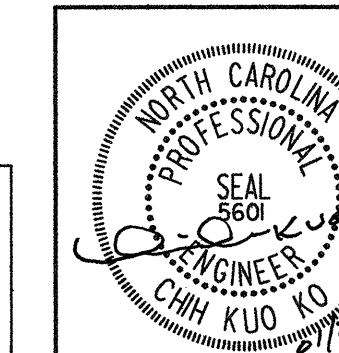
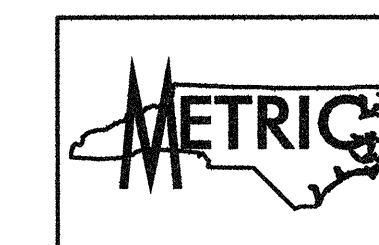
**QUANTITIES FOR BARRIER RAIL ARE NOT INCLUDED.

▲ CLOSURE POUR QUANTITY (2.8 m³) AT END BENT IS INCLUDED IN THE CONCRETE QUANTITY OF THIS POUR.

PROJECT NO. R-2552AA

WAKE-JOHNSTON COUNTY

STATION: 27+51.601 -I1Y1-



STATE OF NORTH CAROLINA
DEPARTMENT OF TRANSPORTATION
RALEIGH

STANDARD
SUPERSTRUCTURE
BILL OF MATERIAL

REVISIONS

NO.	BY:	DATE:	NO.	BY:	DATE:
1			3		
2			4		

SHEET NO.

5-63

TOTAL SHEETS

429

DWG. NO. 27

STD. NO. BOM1SM

ASSEMBLED BY : B.E. LANNING DATE : JAN. 2005
CHECKED BY : J.C. KO DATE : JAN. 2005
DRAWN BY : JMB 5/87 REV. 5/16/97 EEM/RGW
CHECKED BY : SJD 9/87

Plans prepared by:
KO & ASSOCIATES, P.C.
Consulting Engineers
1011 SCHAUH DR., SUITE #202
RALEIGH, N.C. 27606
For Division of Highways