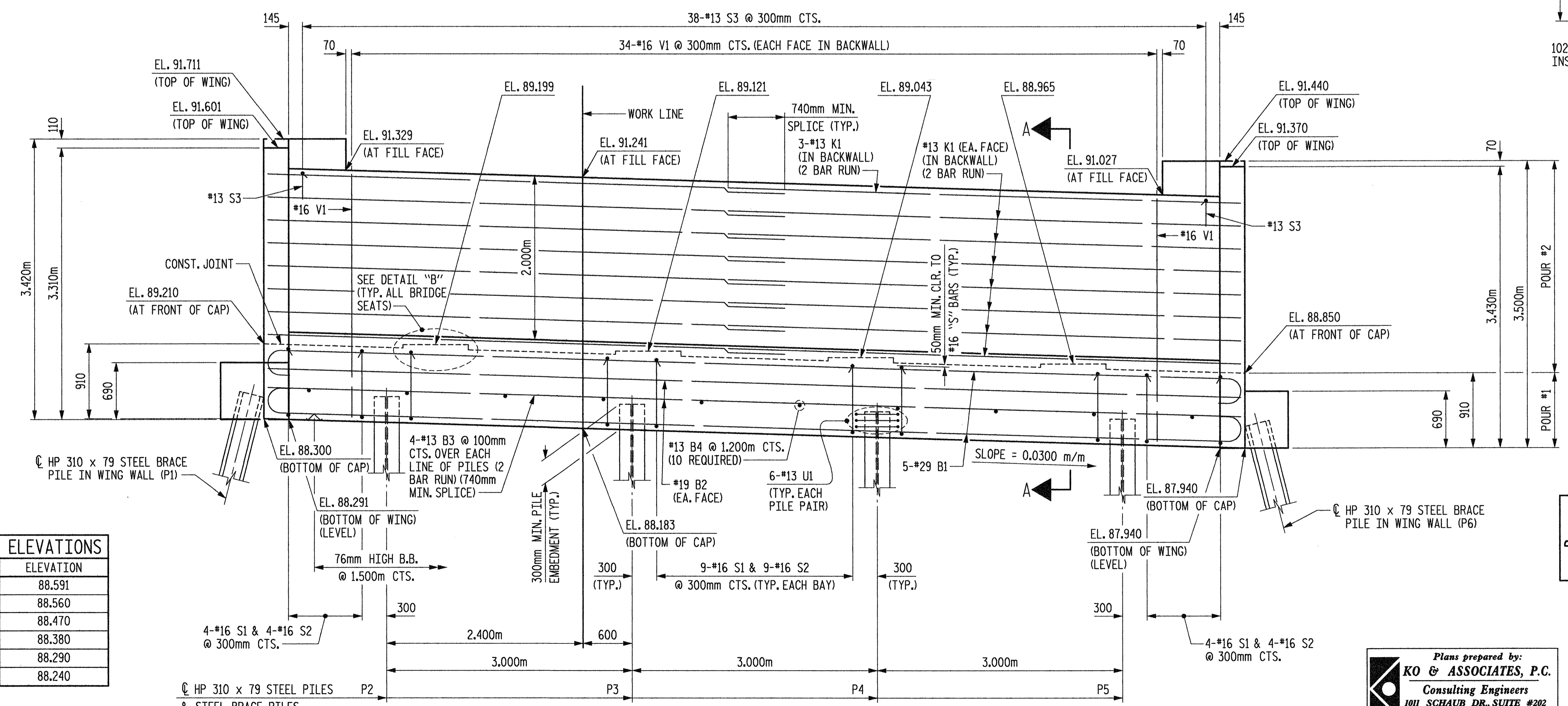


PLAN



ELEVATION

TOP OF PILE ELEVATIONS	
PILE	ELEVATION
P1	88.591
P2	88.560
P3	88.470
P4	88.380
P5	88.290
P6	88.240

NOTES:

STIRRUPS IN CAP MAY BE SHIFTED AS NECESSARY TO CLEAR PIPE INSERTS.

FOR EPOXY PROTECTIVE COATING, SEE SPECIAL PROVISIONS.

FOR POT BEARING AND PIPE INSERT DETAILS, SEE "SUPERSTRUCTURE EXPANSION POT BEARING DETAILS" SHEET.

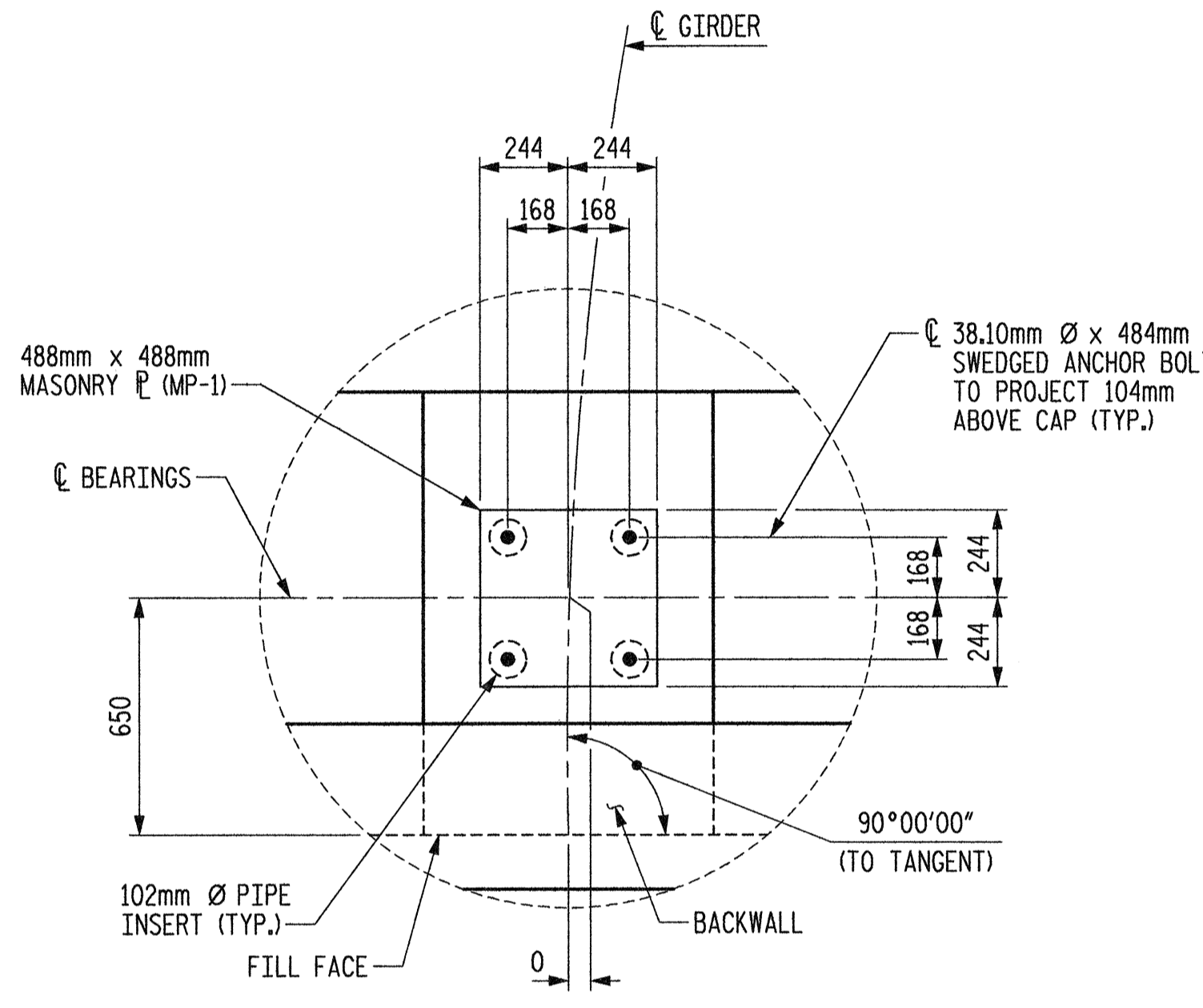
BACKWALL SHALL BE PLACED BEFORE APPLYING THE EPOXY PROTECTIVE COATING.

THE TOP SURFACE AREAS OF THE END BENT CAP SHALL BE CURED IN ACCORDANCE WITH THE STANDARD SPECIFICATIONS EXCEPT THAT THE MEMBRANE CURING COMPOUND METHOD SHALL NOT BE USED.

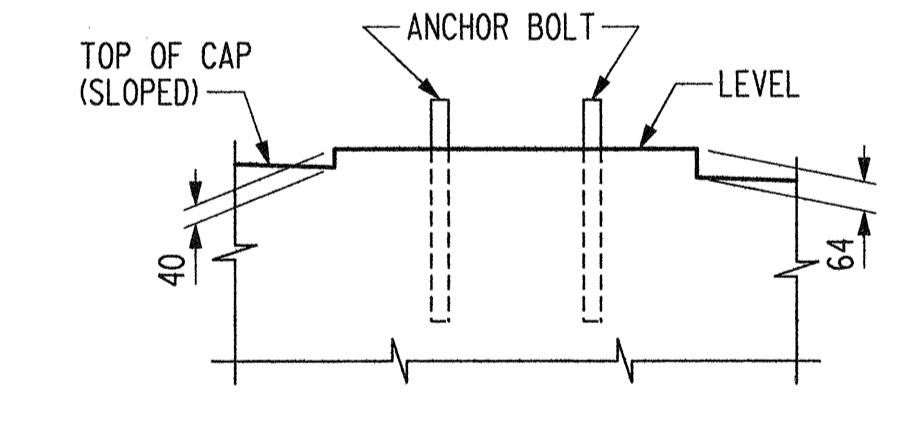
THE TOP SURFACE OF THE CAP EXCEPT THE BRIDGE SEAT BUILDUPS SHALL BE SLOPED TRANSVERSELY FROM THE FILL FACE TO THE BACK FACE AT THE RATE OF 2%.

FOR SECTION A-A, PILE SPLICE DETAILS AND TEMPORARY DRAINAGE DETAILS, SEE SHEET 3 OF 3.

THE CONTRACTOR SHALL PROVIDE FOR INSTALLATION OF THE 102mm Ø DRAIN PIPE THROUGH THE WING WALL AS REQUIRED FOR REINFORCED BRIDGE APPROACH FILLS, SEE THE ROADWAY PLANS. REINFORCING STEEL IN THE WING WALL MAY BE SHIFTED AS NECESSARY TO CLEAR THE DRAIN PIPE.



DETAIL "A"



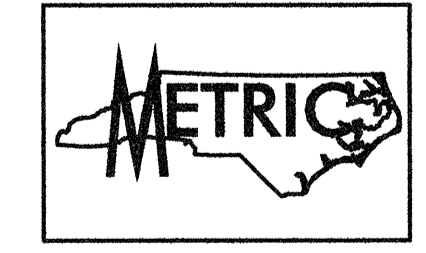
DETAIL "B"

PROJECT NO. R-2552AA

WAKE-JOHNSTON COUNTY

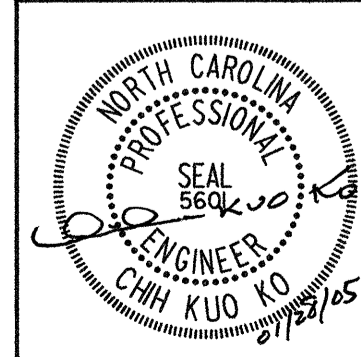
STATION: 27+51.601 -I1Y1-

SHEET 1 OF 3



STATE OF NORTH CAROLINA
DEPARTMENT OF TRANSPORTATION
RALEIGH

SUBSTRUCTURE
END BENT #1



Plans prepared by:
KO & ASSOCIATES, P.C.
Consulting Engineers
1011 SCHUBB DR. SUITE #202
RALEIGH, N.C. 27606
For Division of Highways

REVISIONS					SHEET NO.
NO.	BY:	DATE:	NO.	DATE:	
1			3		5-64
2			4		429

DWG. NO. 28

PLOT: 01/28/2005 07:43:22 AM Ko & Associates, P.C.
 FILE NAME: r:\2552aa\sub\sb1.dwg

DRAWN BY: B.E. LANNING DATE: JAN. 2005
 CHECKED BY: J.C. KO / A.K. ORR DATE: JAN. 2005