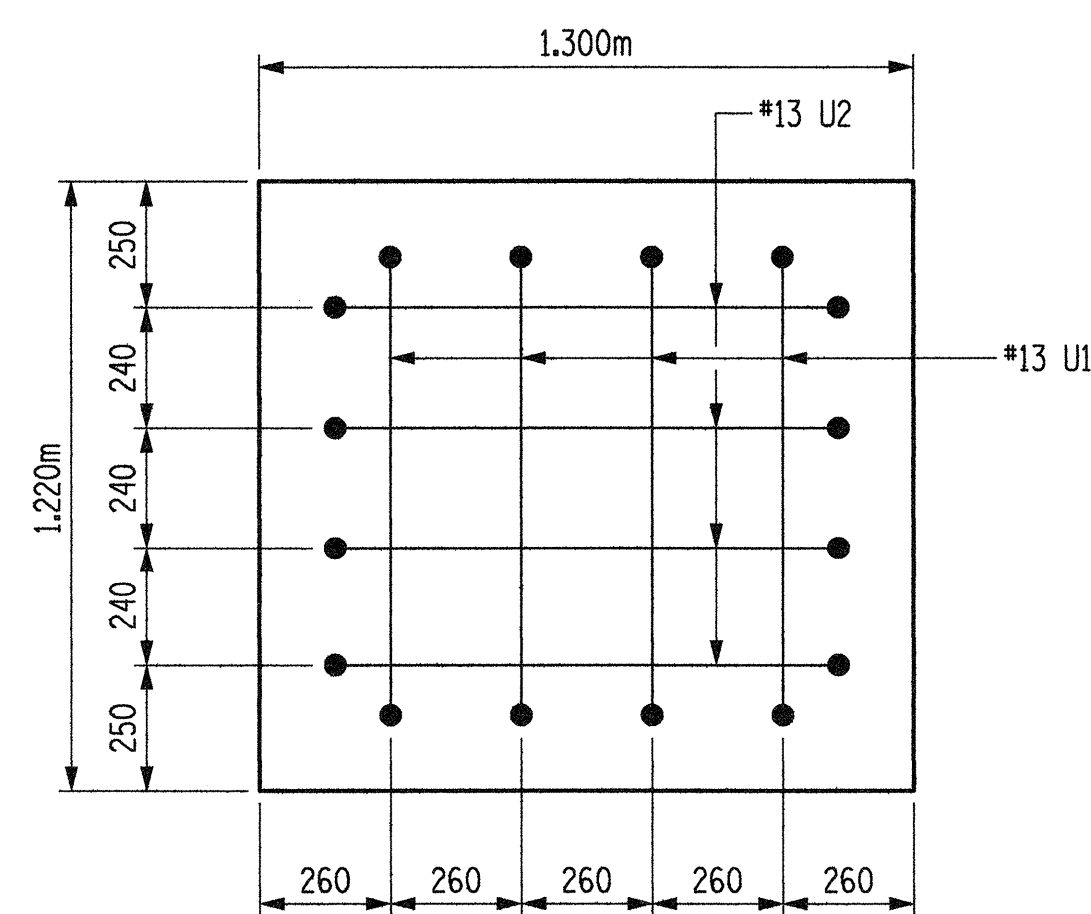
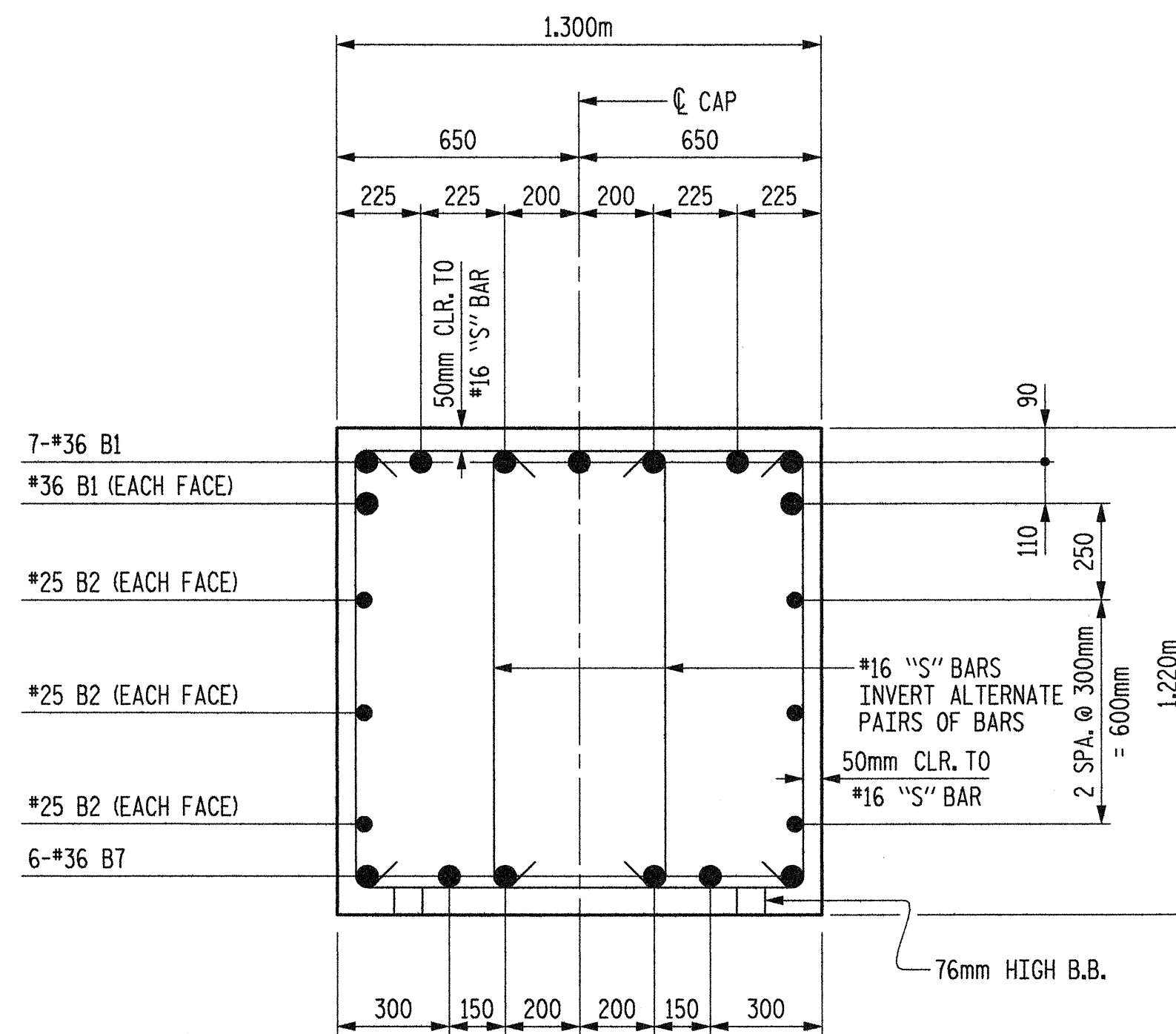


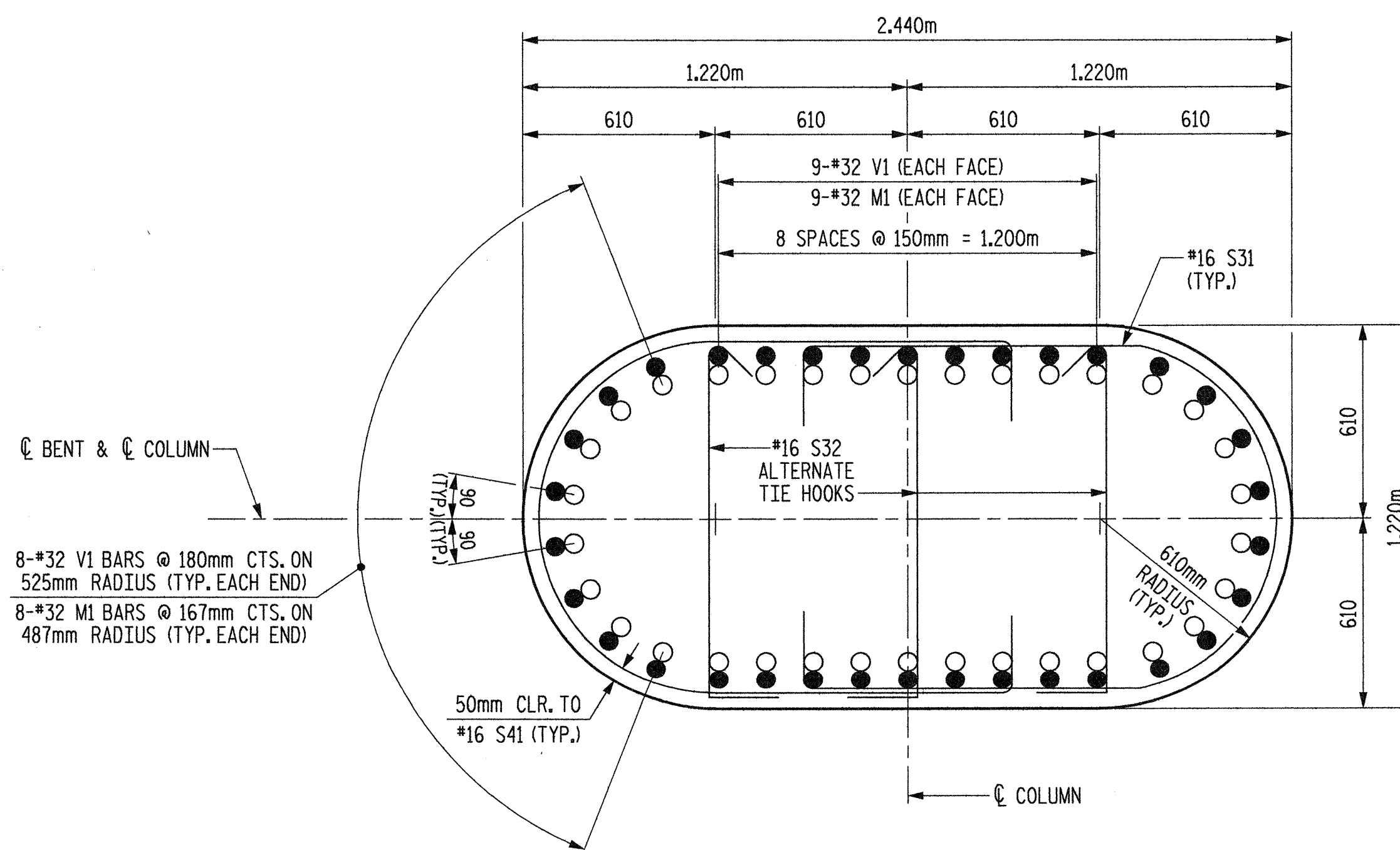
SECTION A-A



VIEW C-C



SECTION B-B



SECTION D-D

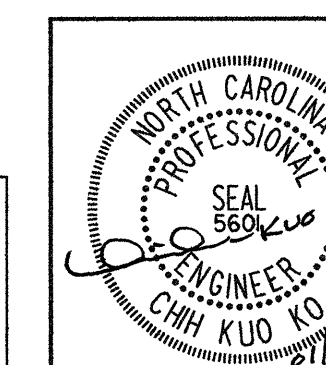
○ #32 M1
● #32 V1

PROJECT NO. R-2552AA
WAKE-JOHNSTON COUNTY
STATION: 27+51.601 -I1Y1-

SHEET 2 OF 3

STATE OF NORTH CAROLINA
DEPARTMENT OF TRANSPORTATION
RALEIGH

SUBSTRUCTURE
BENT #1



Plans prepared by:
KO & ASSOCIATES, P.C.
Consulting Engineers
1011 SCHAUH DR., SUITE #202
RALEIGH, N.C. 27606
For Division of Highways

REVISIONS						SHEET NO.
NO.	BY:	DATE:	NO.	BY:	DATE:	
1			3			TOTAL SHEETS
2			4			429

DWG. NO. 32

PL01: 01/29/2005 07:54:00 AM Ko & Associates, P.C.
FILE NAME: r:\2552aa\sub.bent.dwg

DRAWN BY: B.E. LANNING DATE: JAN. 2005
CHECKED BY: J.C. KO / A.K. ORR DATE: JAN. 2005