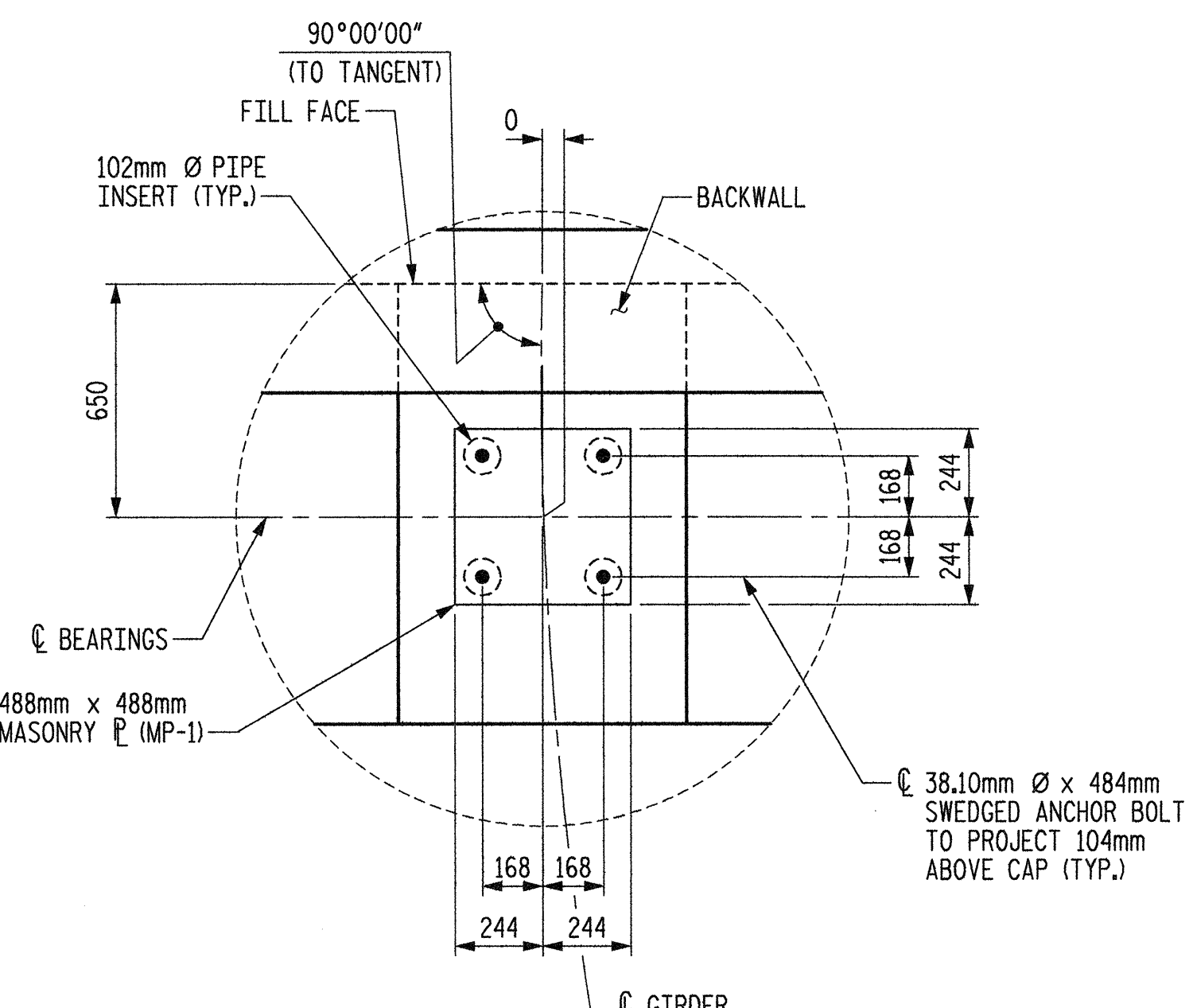
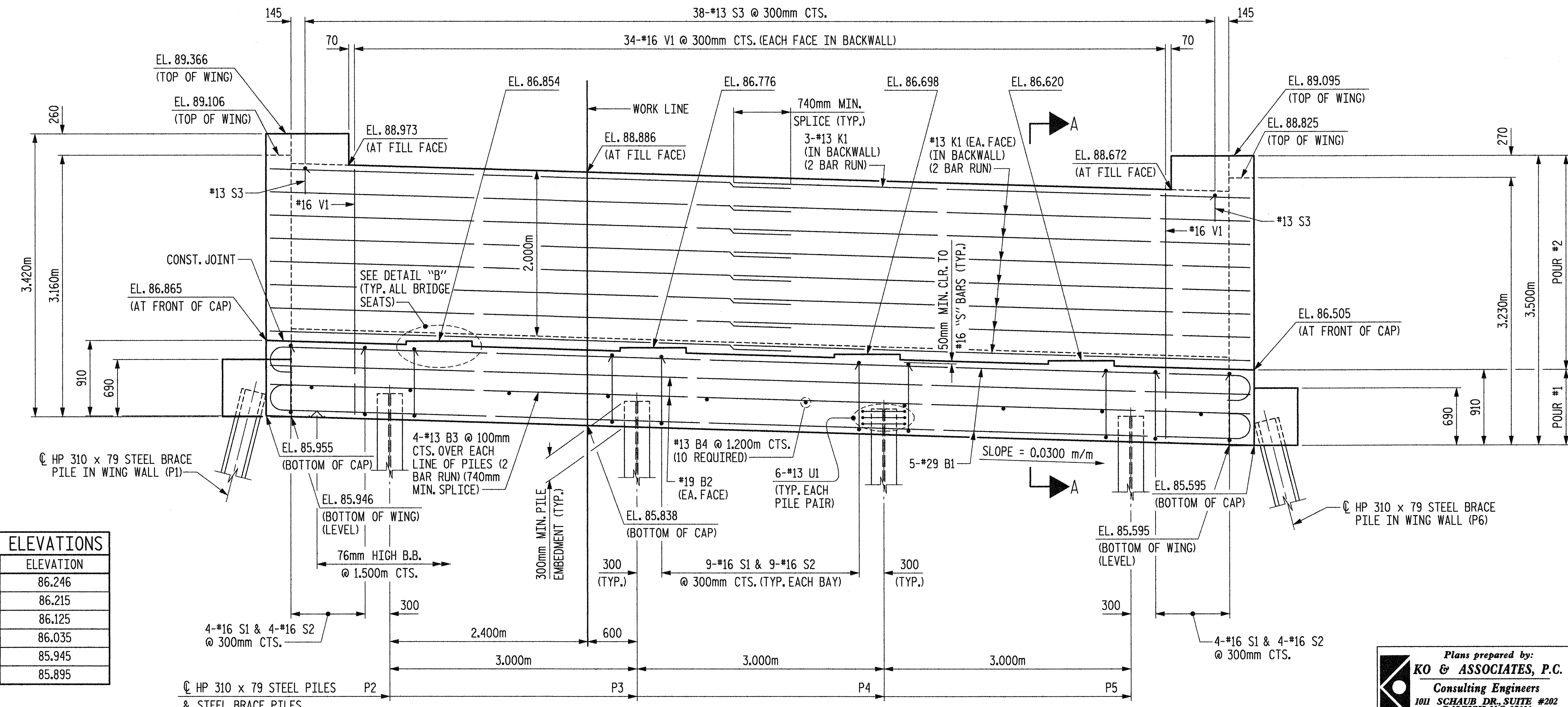


PLAN

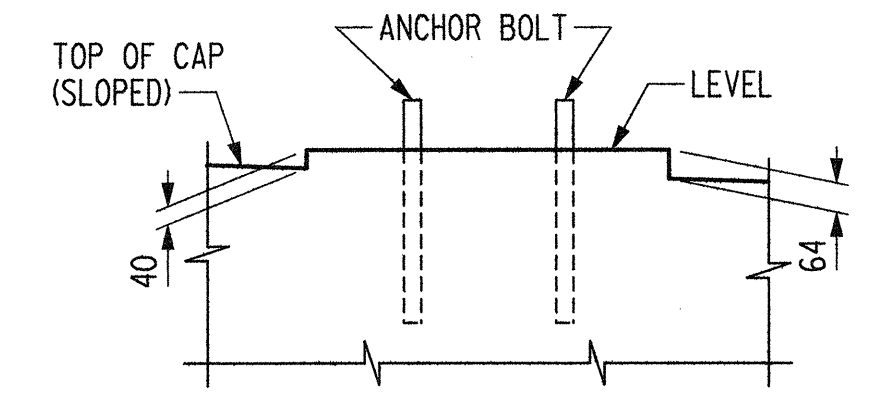
NOTES:
 STIRRUPS IN CAP MAY BE SHIFTED AS NECESSARY TO CLEAR PIPE INSERTS.
 FOR EPOXY PROTECTIVE COATING, SEE SPECIAL PROVISIONS.
 FOR POT BEARING AND PIPE INSERT DETAILS, SEE "SUPERSTRUCTURE EXPANSION POT BEARING DETAILS" SHEET.
 BACKWALL SHALL BE PLACED BEFORE APPLYING THE EPOXY PROTECTIVE COATING.
 THE TOP SURFACE AREAS OF THE END BENT CAP SHALL BE CURED IN ACCORDANCE WITH THE STANDARD SPECIFICATIONS EXCEPT THAT THE MEMBRANE CURING COMPOUND METHOD SHALL NOT BE USED.
 THE TOP SURFACE OF THE CAP EXCEPT THE BRIDGE SEAT BUILDUPS SHALL BE SLOPED TRANSVERSELY FROM THE FILL FACE TO THE BACK FACE AT THE RATE OF 2%.
 FOR SECTION A-A, PILE SPLICE DETAILS AND TEMPORARY DRAINAGE DETAILS, SEE "END BENT #1" SHEET 3 OF 3.
 THE CONTRACTOR SHALL PROVIDE FOR INSTALLATION OF THE 102mm Ø DRAIN PIPE THROUGH THE WING WALL AS REQUIRED FOR REINFORCED BRIDGE APPROACH FILLS, SEE THE ROADWAY PLANS. REINFORCING STEEL IN THE WING WALL MAY BE SHIFTED AS NECESSARY TO CLEAR THE DRAIN PIPE.



DETAIL "A"



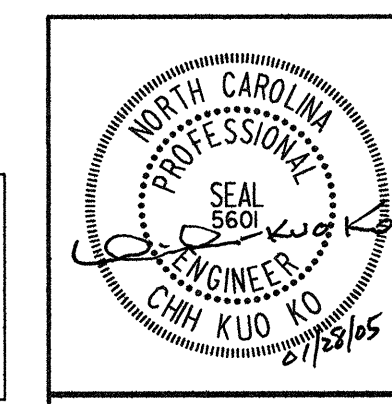
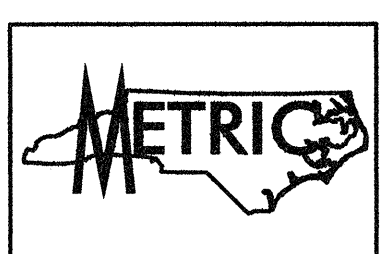
ELEVATION



DETAIL "B"

PROJECT NO. R-252AA
 WAKE-JOHNSTON COUNTY
 STATION: 27+51.601 -I1Y1-

TOP OF PILE ELEVATIONS	
PILE	ELEVATION
P1	86.246
P2	86.215
P3	86.125
P4	86.035
P5	85.945
P6	85.895



Plans prepared by:
KO & ASSOCIATES, P.C.
 Consulting Engineers
 101 SCHUB DR., SUITE #202
 RALEIGH, N.C. 27606
 For Division of Highways

REVISIONS						SHEET NO.
NO.	BY:	DATE:	NO.	BY:	DATE:	
1			3			5-76
2			4			429

PLOT: 01/28/2005 07:56:00 AM Ko & Associates, P.C.
 FILE NAME: r-252aa.dwg, 02.dgn

DRAWN BY: B.E. LANNING DATE: JAN. 2005
 CHECKED BY: J.C. KO / A.K. ORR DATE: JAN. 2005

DWG. NO. 40