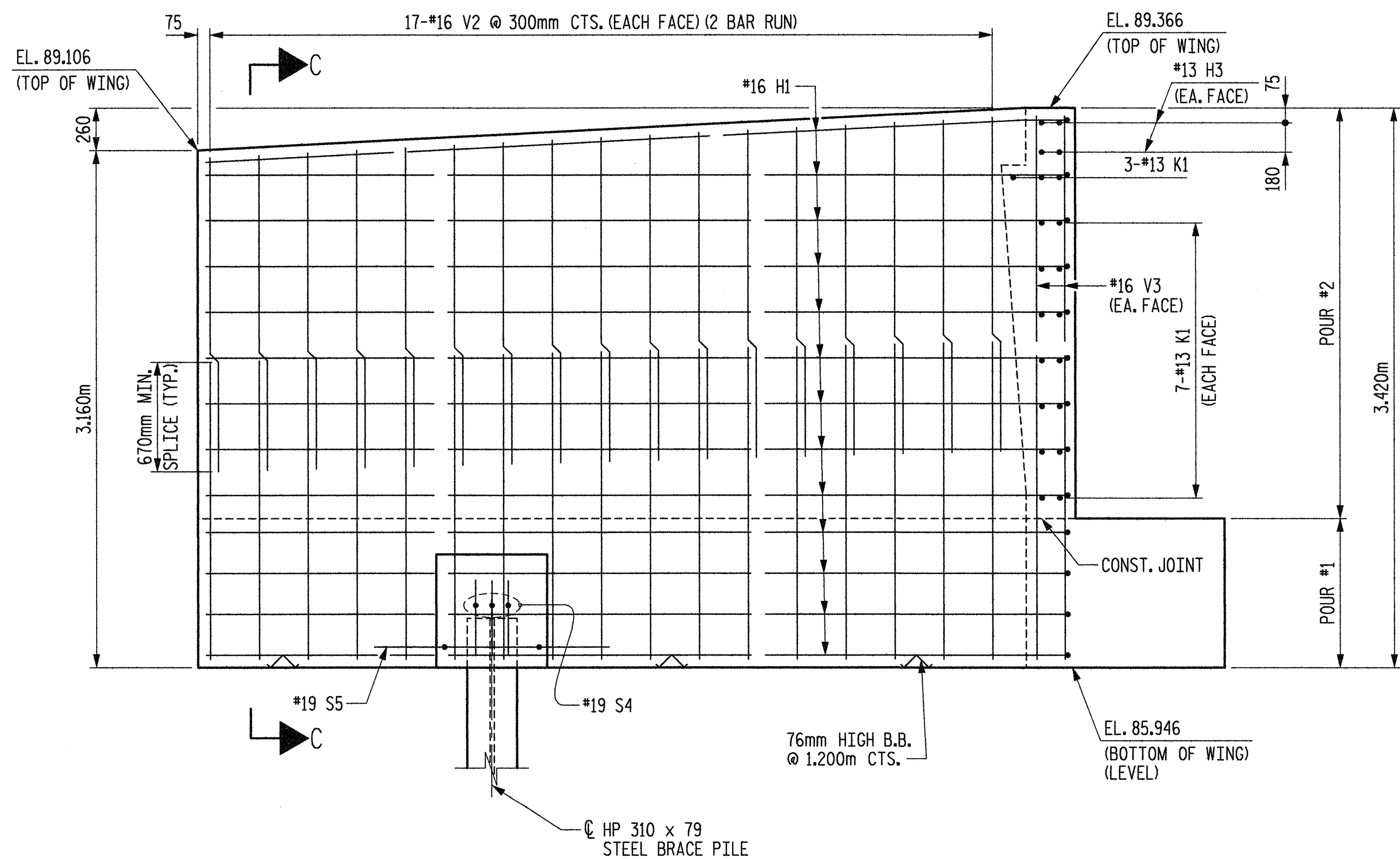
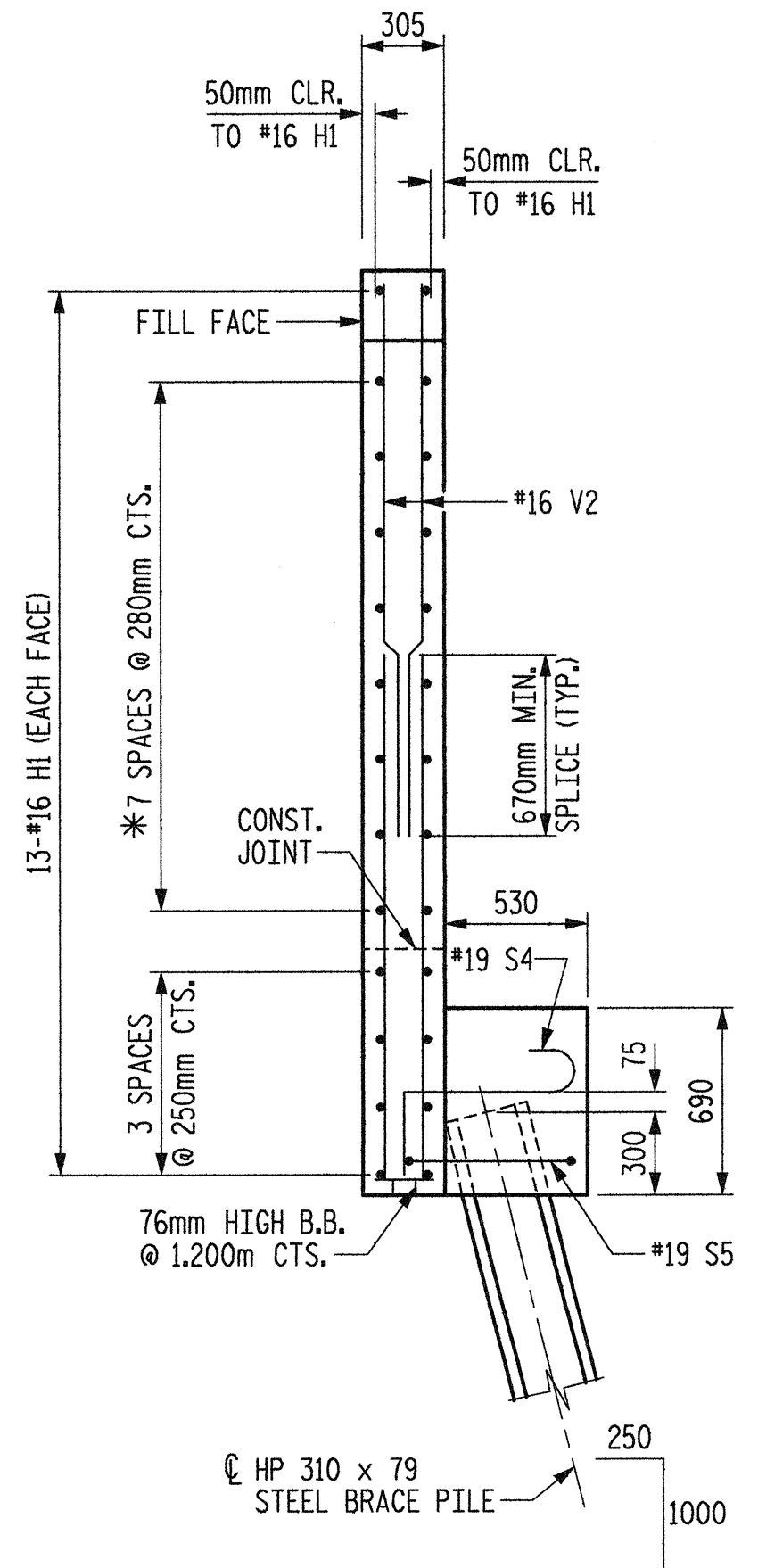


PLAN OF LEFT WING - W1



VIEW A-A

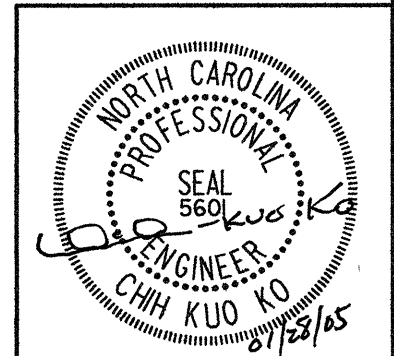


SECTION C-C

\* NOTE: MATCH "H" BARS IN THE WING TO THE #13 K1 BARS IN THE BACKWALL. "K" BARS SHOULD EXTEND FROM WING TO WING.

PROJECT NO. R-2552AA  
 WAKE-JOHNSTON COUNTY  
 STATION: 27+51.601 -I1Y1-

SHEET 2 OF 3  
 STATE OF NORTH CAROLINA  
 DEPARTMENT OF TRANSPORTATION  
 RALEIGH  
 SUBSTRUCTURE  
 END BENT #2



Plans prepared by:  
**KO & ASSOCIATES, P.C.**  
 Consulting Engineers  
 1011 SCHAUB DR., SUITE #202  
 RALEIGH, N.C. 27606  
 For Division of Highways

REVISIONS						SHEET NO.
NO.	BY:	DATE:	NO.	BY:	DATE:	TOTAL SHEETS
1			3			429
2			4			

DWG. NO. 41

PLOT: 01/29/2005 07:56:10 AM Ko & Associates, P.C.  
 FILE NAME: r1-2552aa.dwg, 82.dgn

DRAWN BY: B.E. LANNING DATE: JAN. 2005  
 CHECKED BY: J.C. KO / A.K. ORR DATE: JAN. 2005