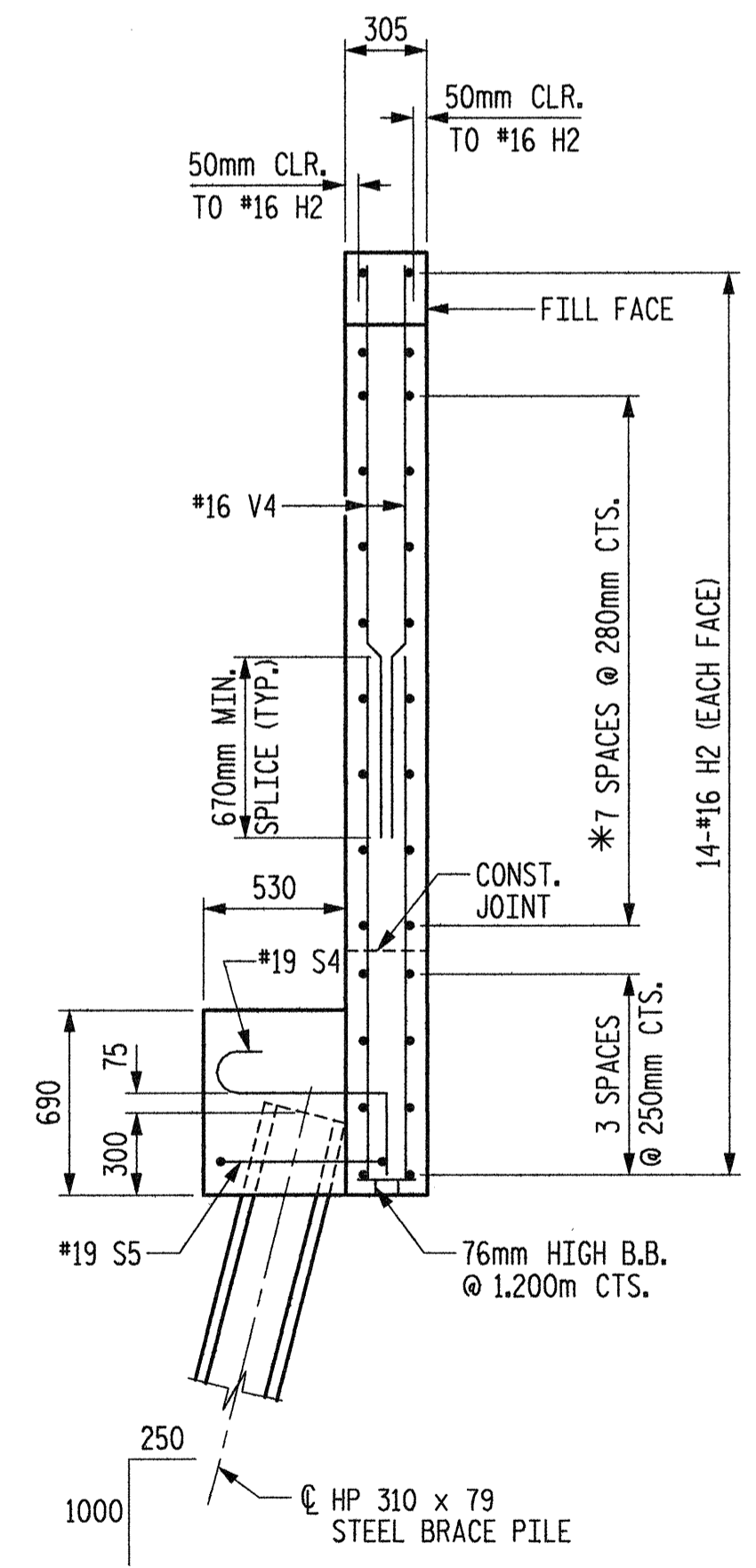
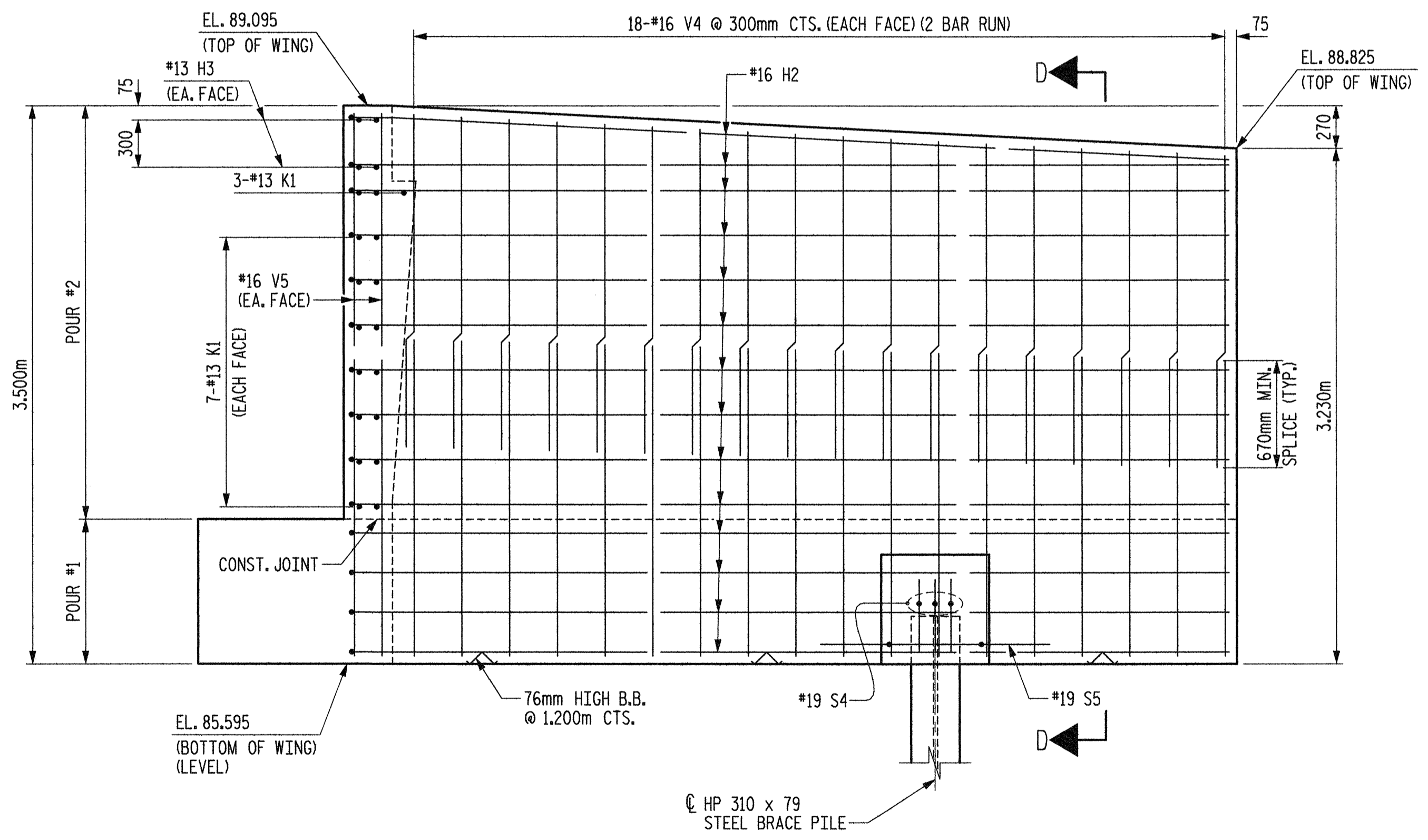


\* NOTE: MATCH "H" BARS IN THE WING TO THE #13 K1 BARS IN THE BACKWALL. "K" BARS SHOULD EXTEND FROM WING TO WING.



SECTION D-D



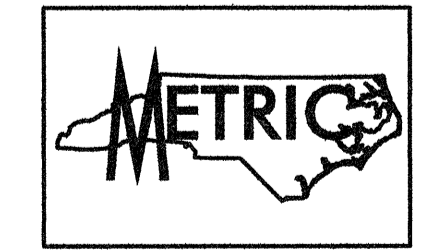
VIEW B-B

BAR TYPES		BILL OF MATERIAL				
		<b>END BENT #2</b>				
BAR	NO.	SIZE	TYPE	LENGTH	WEIGHT	
B1	10	29	1	12640	640	
B2	4	19	STR	11900	106	
B3	16	13	STR	6320	101	
B4	10	13	STR	1120	11	
H1	26	16	5	5500	222	
H2	28	16	5	5700	248	
H3	8	13	STR	880	7	
K1	34	13	STR	6320	214	
S1	35	16	3	3000	163	
S2	35	16	2	1400	76	
S3	38	13	8	760	29	
S4	6	19	7	1120	15	
S5	2	19	6	2700	12	
U1	24	13	4	2040	49	
V1	68	16	STR	2940	310	
V2	68	16	STR	2000	211	
V3	10	16	STR	3320	52	
V4	72	16	STR	2040	228	
V5	10	16	STR	3400	53	
REINFORCING STEEL					2747 kg	
CLASS A CONCRETE BREAKDOWN						
POUR #1 (CAP & WING)					17.1 CU. METERS	
POUR #2 (BACKWALL & WING)					17.4 CU. METERS	
TOTAL CLASS A CONCRETE					34.5 CU. METERS	
HP 310 x 79 STEEL PILES						
NO. 10					155.0 LIN. METERS	

ALL BAR DIMENSIONS ARE OUT TO OUT.

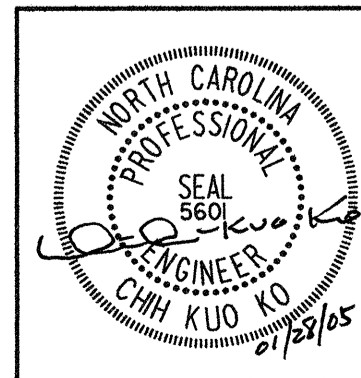
PROJECT NO. R-2552AA  
 WAKE-JOHNSTON COUNTY  
 STATION: 27+51.601 -I1Y1-

SHEET 3 OF 3



STATE OF NORTH CAROLINA  
 DEPARTMENT OF TRANSPORTATION  
 RALEIGH

SUBSTRUCTURE  
 END BENT #2



Plans prepared by:  
**KO & ASSOCIATES, P.C.**  
 Consulting Engineers  
 101 SCHUB DR., SUITE #202  
 RALEIGH, N.C. 27606  
 For Division of Highways

REVISIONS						SHEET NO.
NO.	BY:	DATE:	NO.	BY:	DATE:	5-76
1			3			
2			4			TOTAL SHEETS 429

DWG. NO. 42

PLOT: 01/29/2005 07:56:32 AM KO & ASSOCIATES, P.C.  
 FILE NAME: r12552aa.dwg, 02.dgn

DRAWN BY: B.E. LANNING DATE: JAN. 2005  
 CHECKED BY: J.C. KO / A.K. ORR DATE: JAN. 2005